



Santa Fe Trail Ranch

Climatological Data
for

2008

The climatological data in this document represents a compilation of the Weather Stats pages from the original Santa Fe Trail Ranch web site and continuing data collection since moving to the new SFTR web site.

Until April 2012, longtime resident Walt Wolff collected and posted daily weather data. But the wintery weather and work associated with maintaining the beautiful Loma Lobo property caused Joyce and Walt to switch to part-time status. Walt gave Robert L. Scott the weather equipment and Bob posted the weather updates until his equipment failed in January 2018. Since then, the data has come from the StargateCOlorado weather station (same type of equipment that Walt/Bob used) maintained by Ernie Parker / Sharon Sorenson.

The data is broken into two sections: the charts in the first section are a synopsis of the weather on the Ranch. For more detailed data (and an aid to help you sleep!), see the monthly climatological tables in the second section.

Notes:

- The StargateCOlorado weather station is at the south end of the Ranch and at a higher elevation than the station maintained by Walt Wolff & Bob Scott. As a result, you will find that, on average, the temperature readings will be slightly lower, and the precipitation readings will be slightly higher than those reported by Bob/Walt's stations.
- The data shown on the various pages starts at a high level and gets more detailed the further down you go.
 - The highest-level charts show the precipitation, snow, temperature, and winds for the entire year.
 - The middle-level charts show the temperature and winds for each month of the year.
 - The lowest-level tables provide all the data collected by the weather station.
 - The snow data has only been collected since 2015 by Ernie / Sharon and does not come from the weather station.
 - What's the definition of "Mean Temperature"? Unlike most weather information, where the "Average Temperature" is just the average of the highest and lowest temperatures of the day, the weather station captures the temperature every 15 minutes, collecting 96 readings per day. The "Mean Temperature" is the average of all 96 readings, giving you a more accurate value.
- Prior to 2022, the times shown in the climatological tables are based on a 12-hour (AM/PM) clock. Starting in 2022, the times listed are based on a 24-hour clock. The data collection program suddenly switched modes.

Enjoy!!

--Ernie Parker

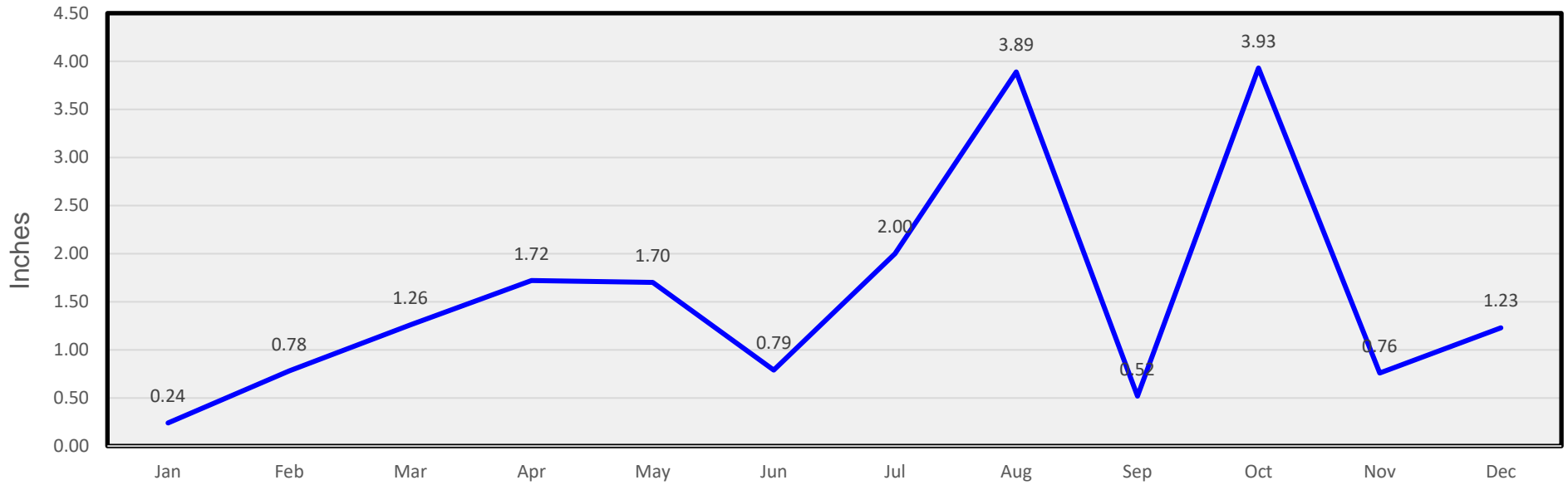
Contents

Charts	5
Monthly Precipitation.....	6
Monthly Snow	6
Monthly Temperatures	7
Monthly Winds	7
January Temperatures.....	8
January Winds	8
February Temperatures	9
February Winds.....	9
March Temperatures.....	10
March Winds	10
April Temperatures	11
April Winds.....	11
May Temperatures.....	12
May Winds	12
June Temperatures.....	13
June Winds	13
July Temperatures	14
July Winds.....	14
August Temperatures	15
August Winds.....	15
September Temperatures.....	16
September Winds	16
October Temperatures.....	17
October Winds	17
November Temperatures.....	18
November Winds	18
December Temperatures.....	19
December Winds	19

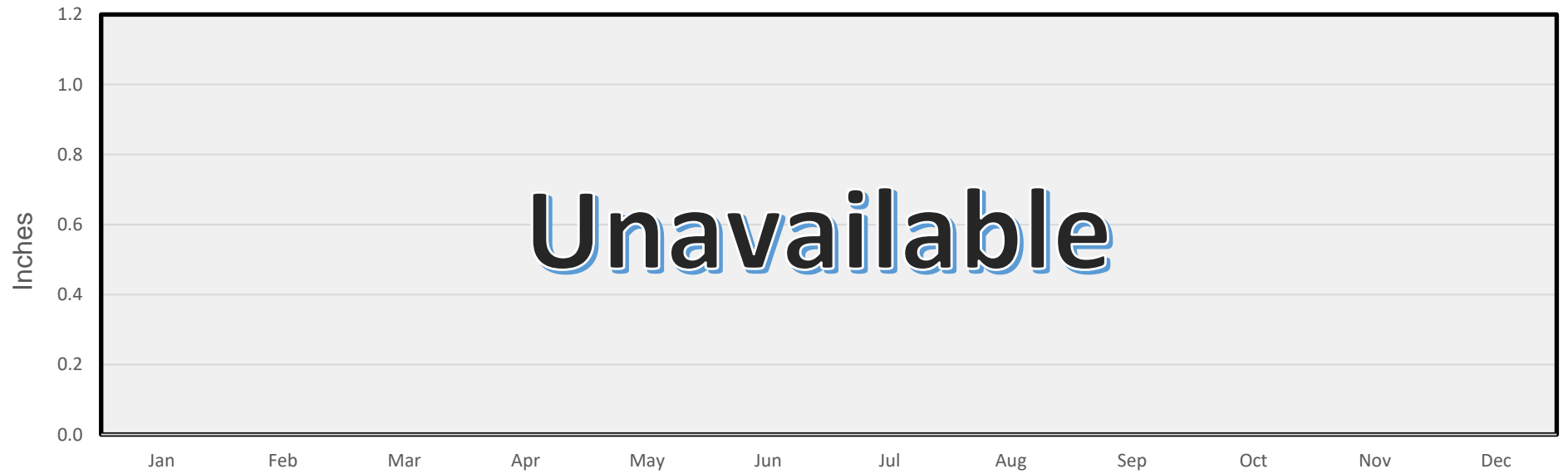
Tables	20
January	21
February	22
March	23
April	24
May	25
June	26
July	27
August	28
September	29
October	30
November	31
December	32

Charts

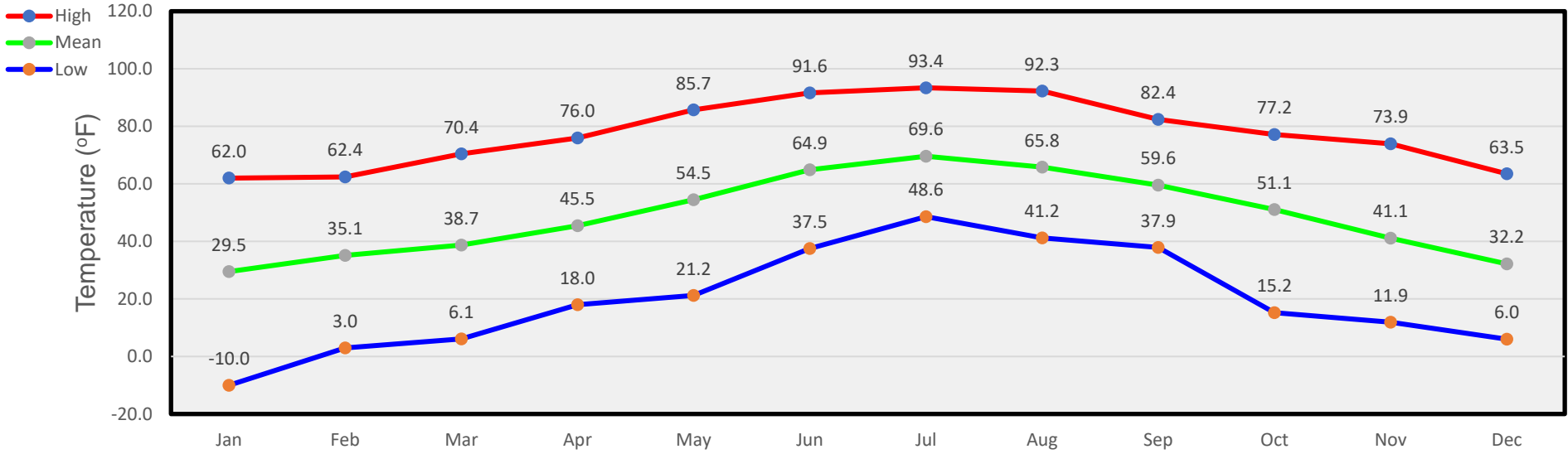
Monthly Precipitation



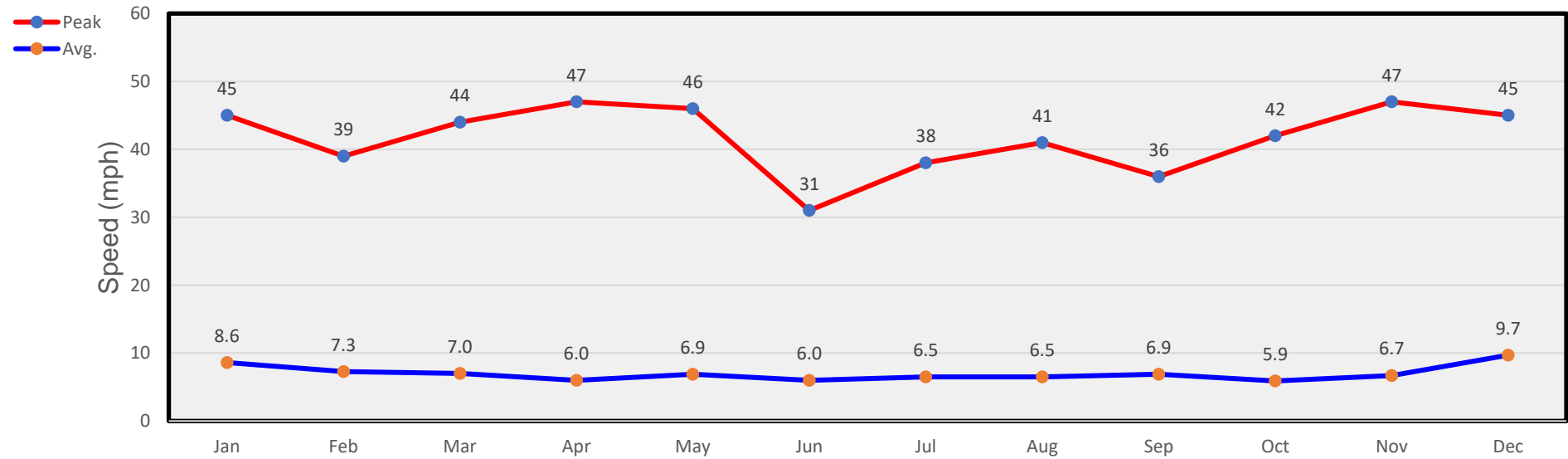
Monthly Snow



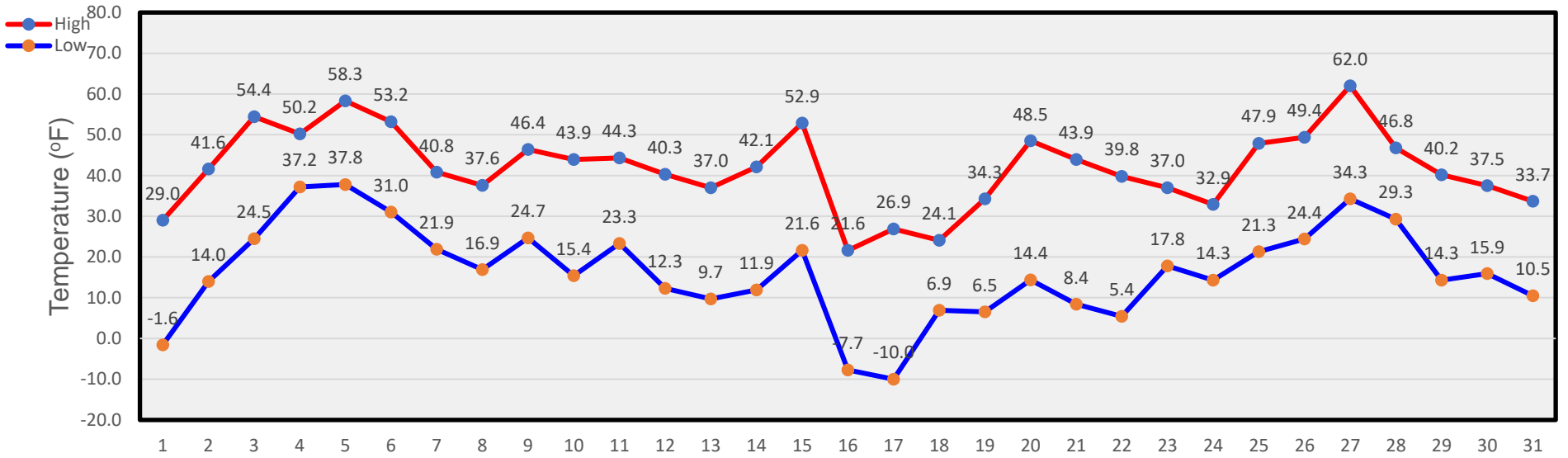
Monthly Temperatures



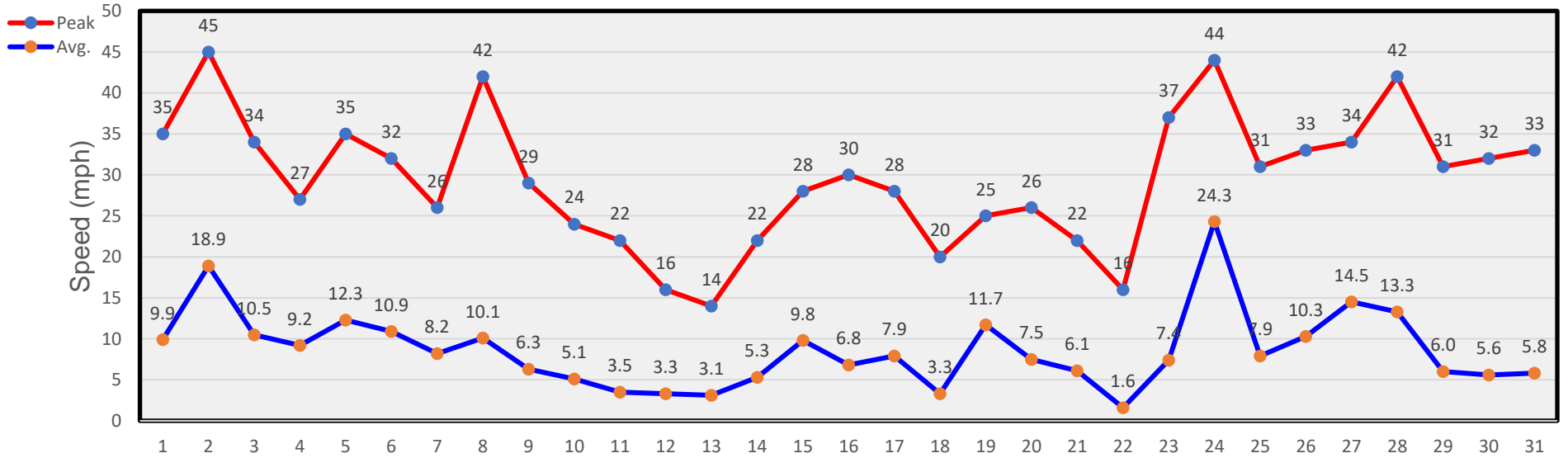
Monthly Winds



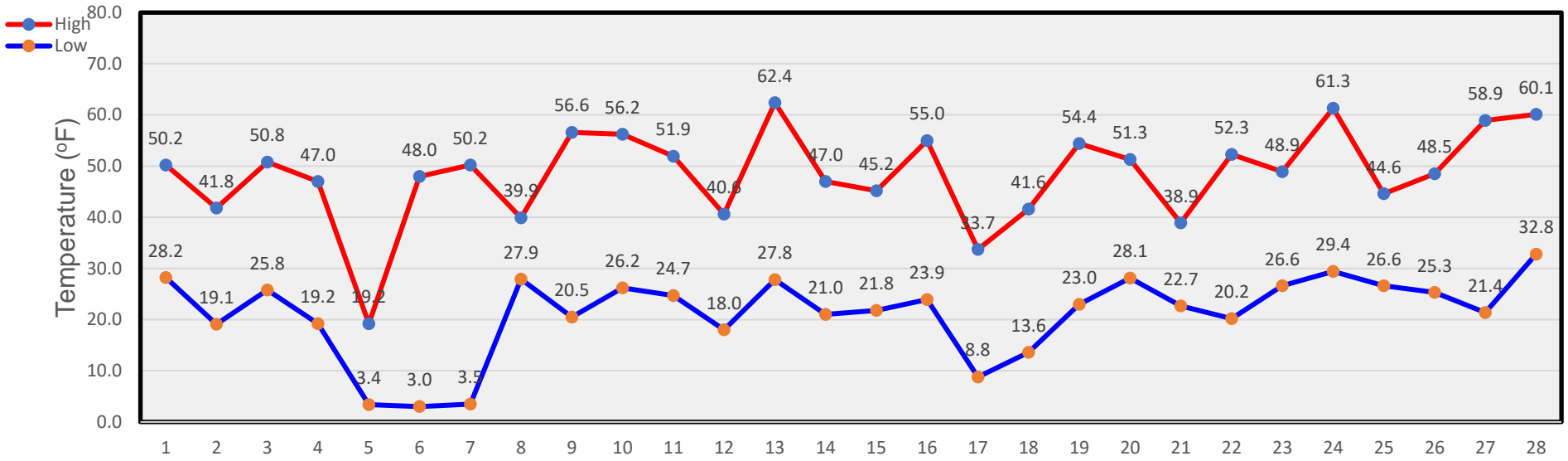
January Temperatures



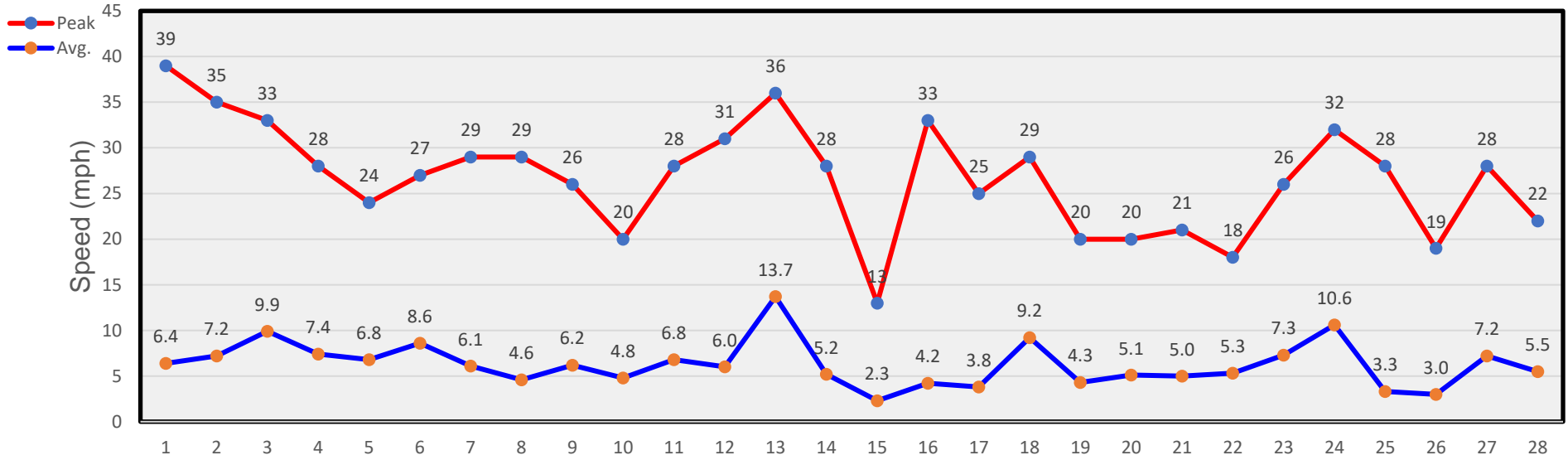
January Winds



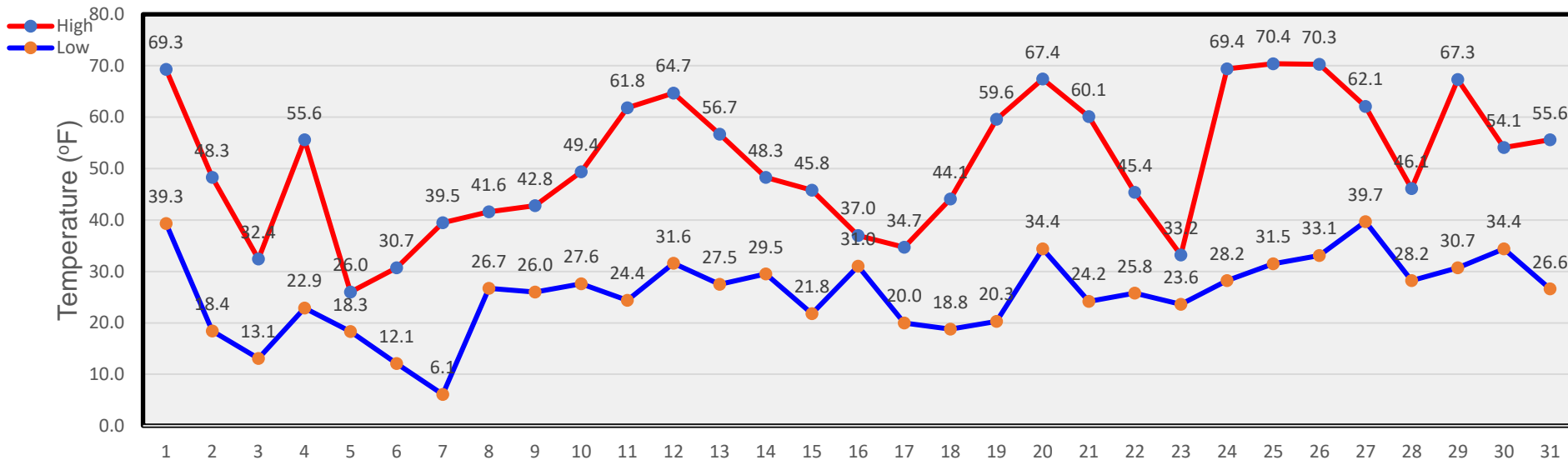
February Temperatures



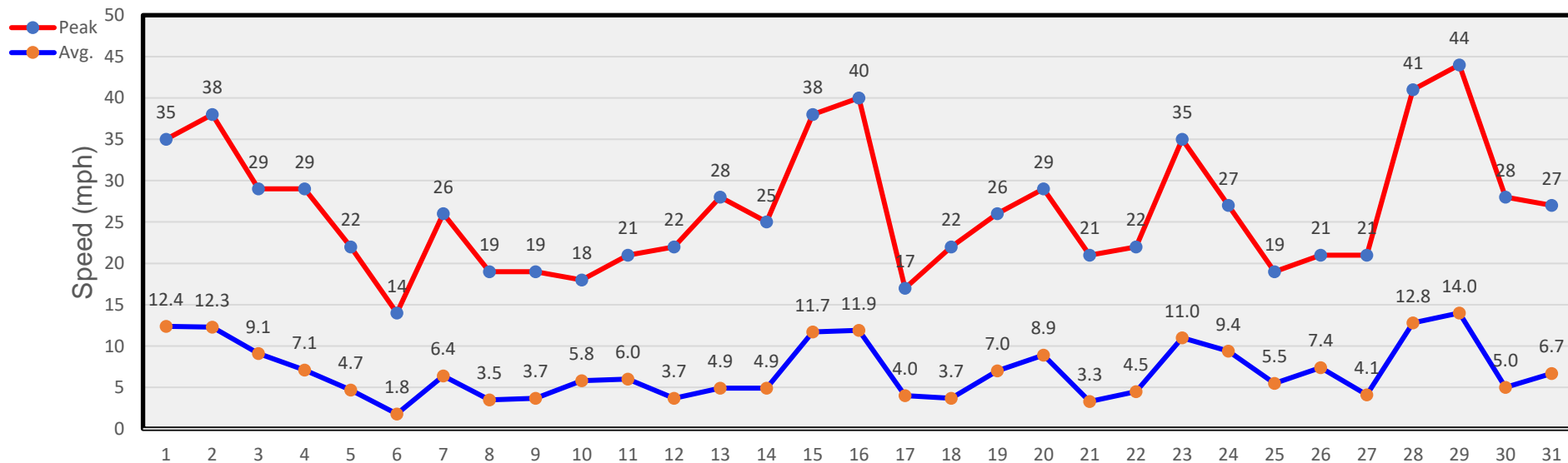
February Winds



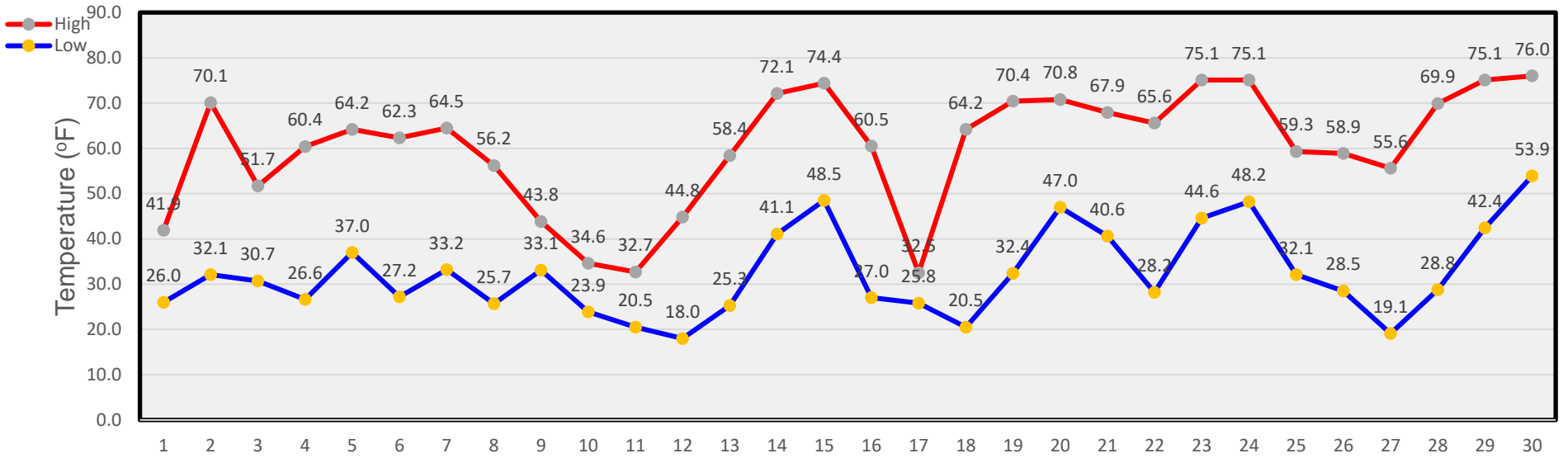
March Temperatures



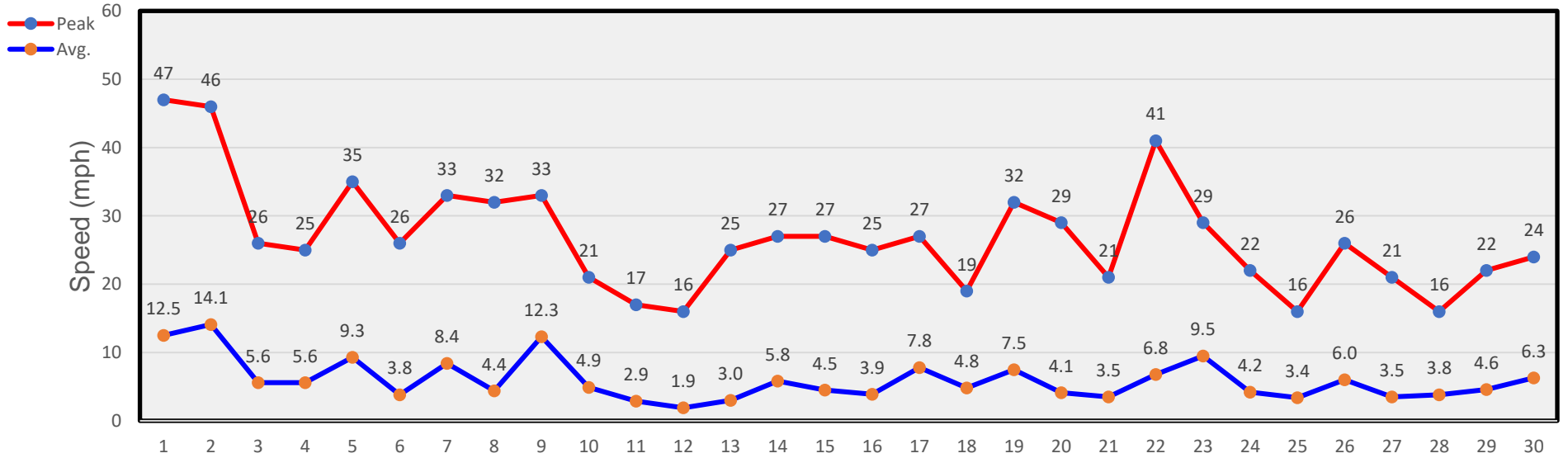
March Winds



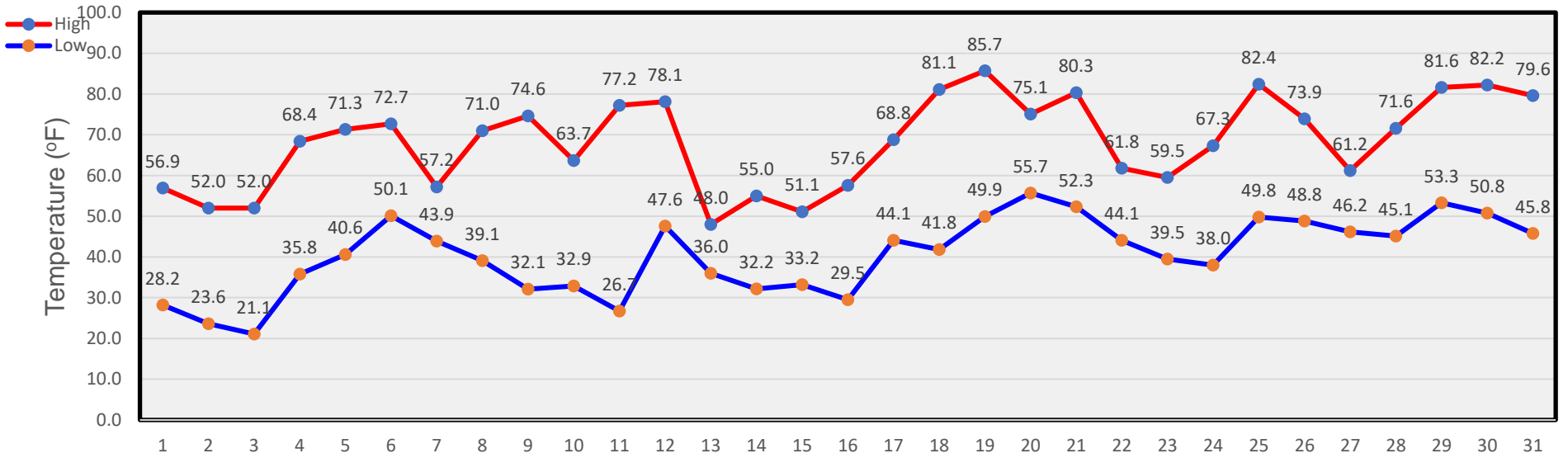
April Temperatures



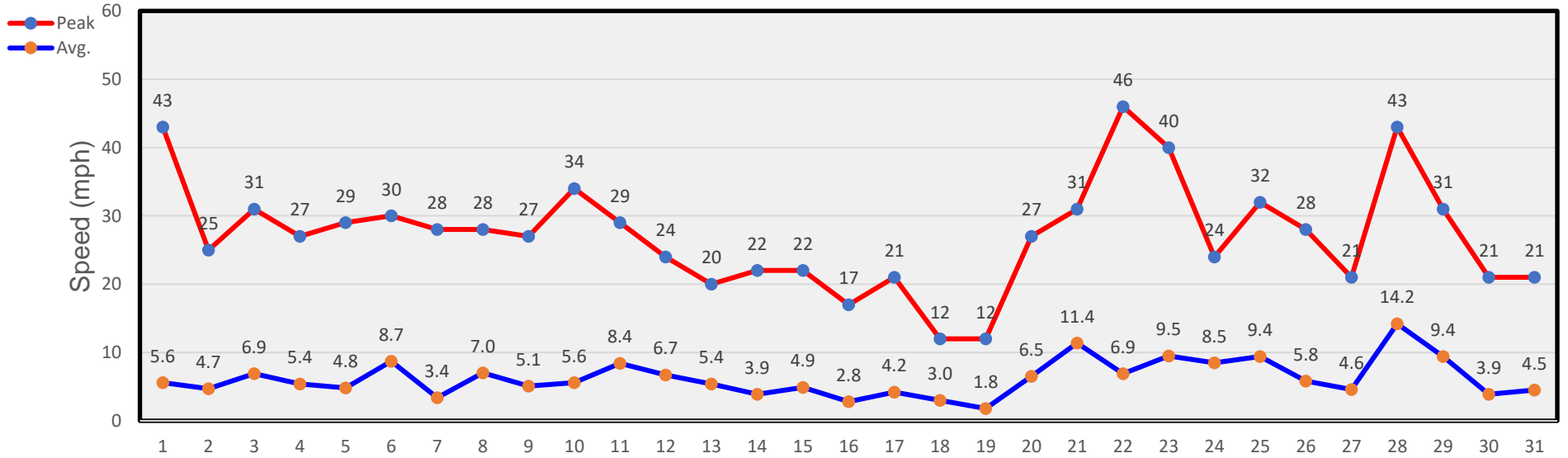
April Winds



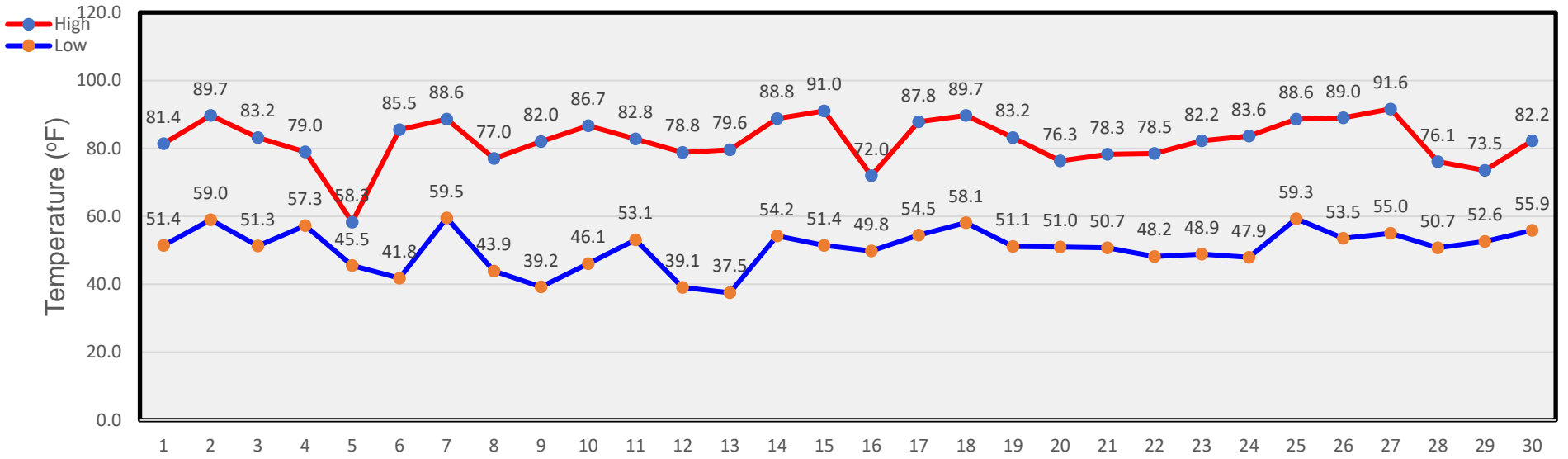
May Temperatures



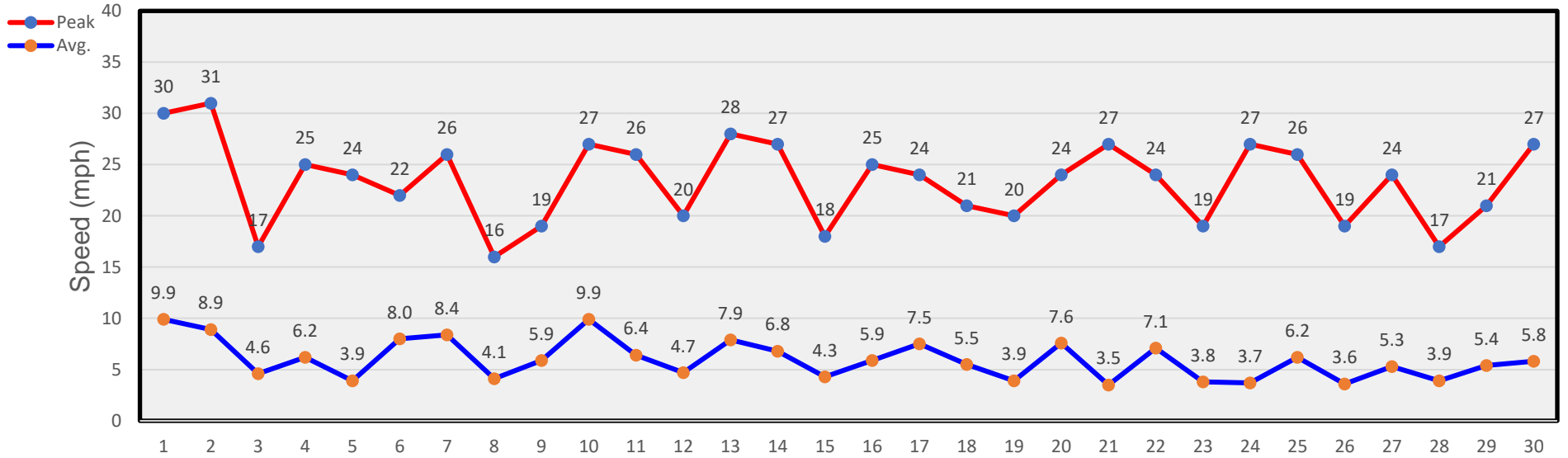
May Winds



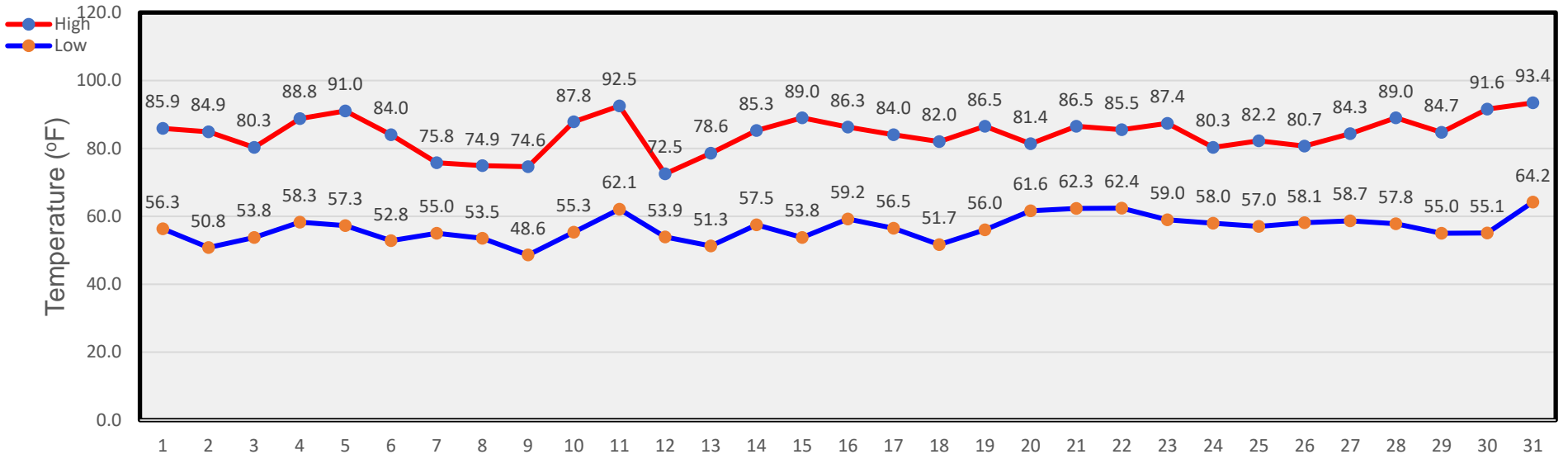
June Temperatures



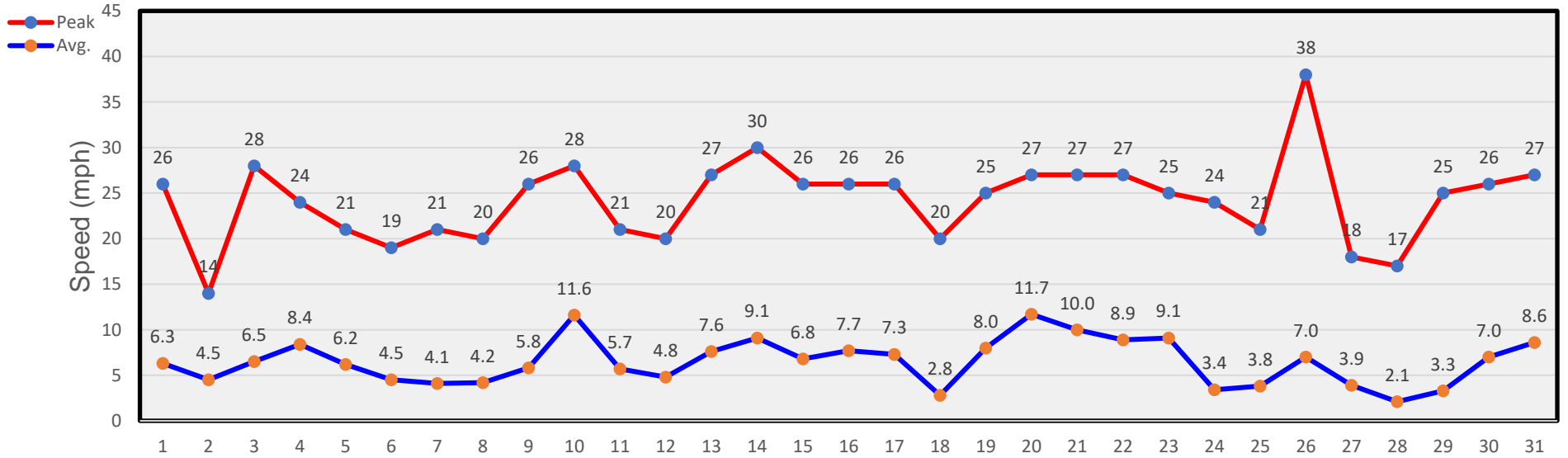
June Winds



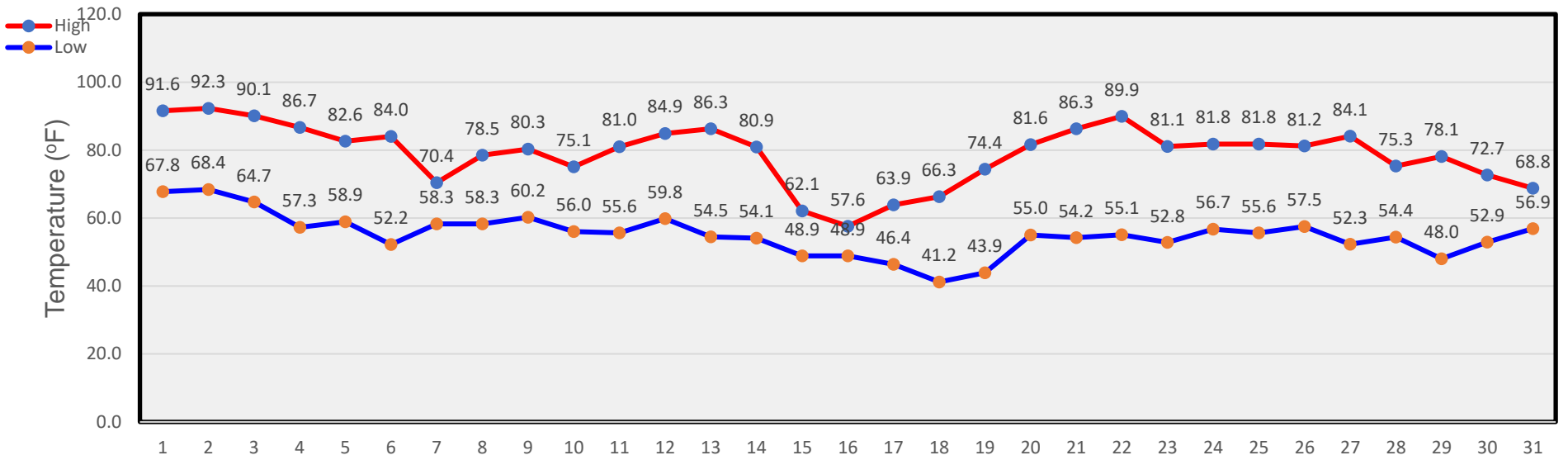
July Temperatures



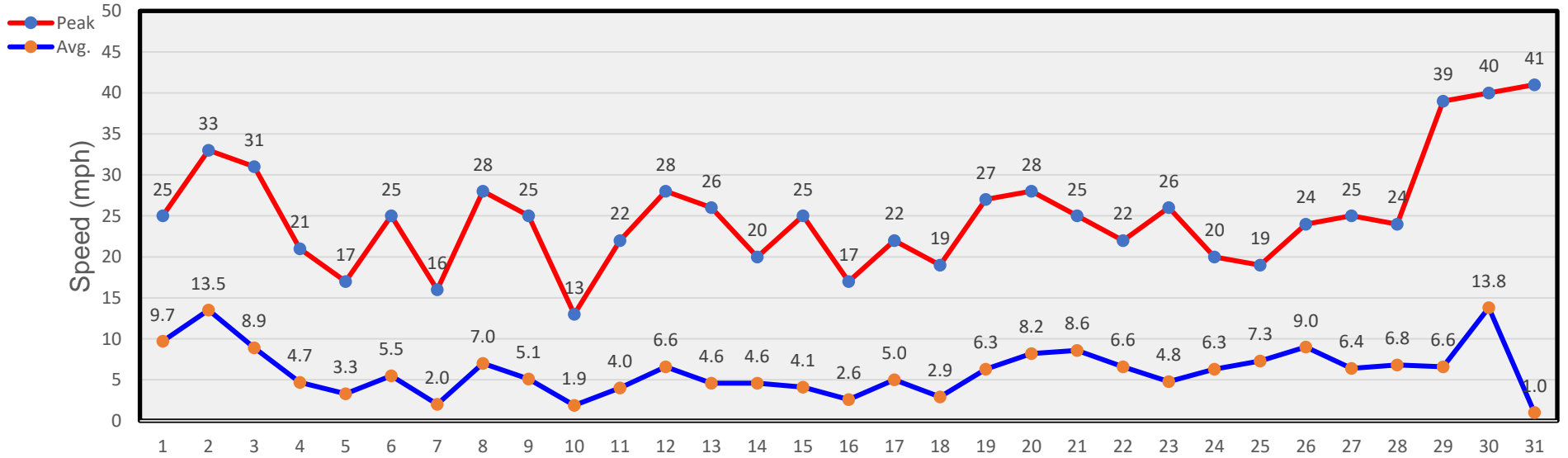
July Winds



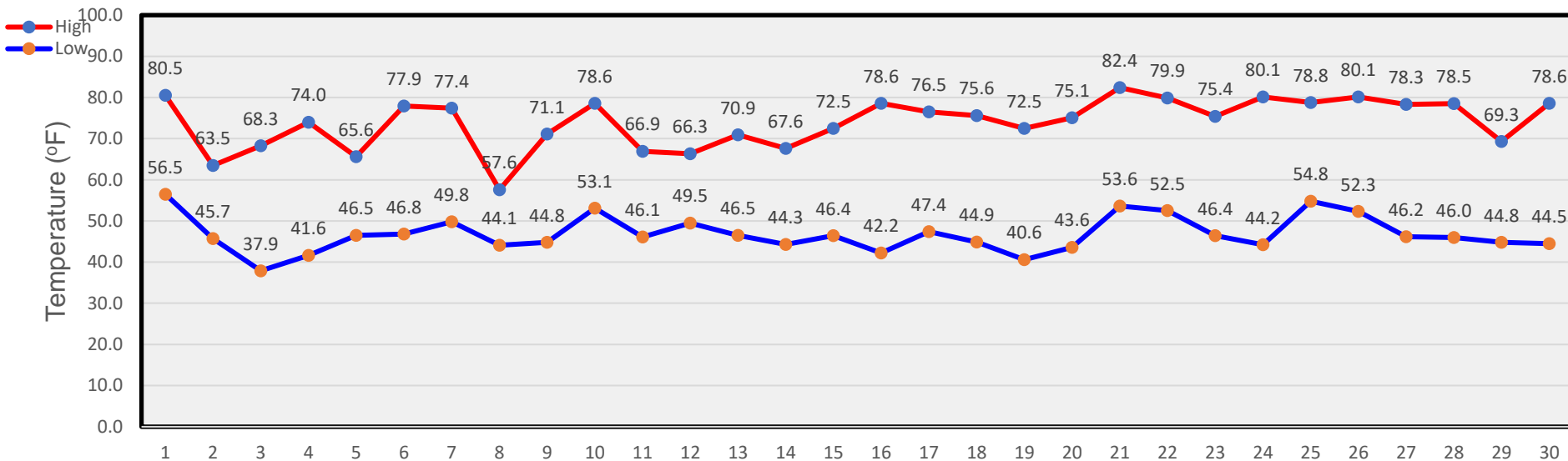
August Temperatures



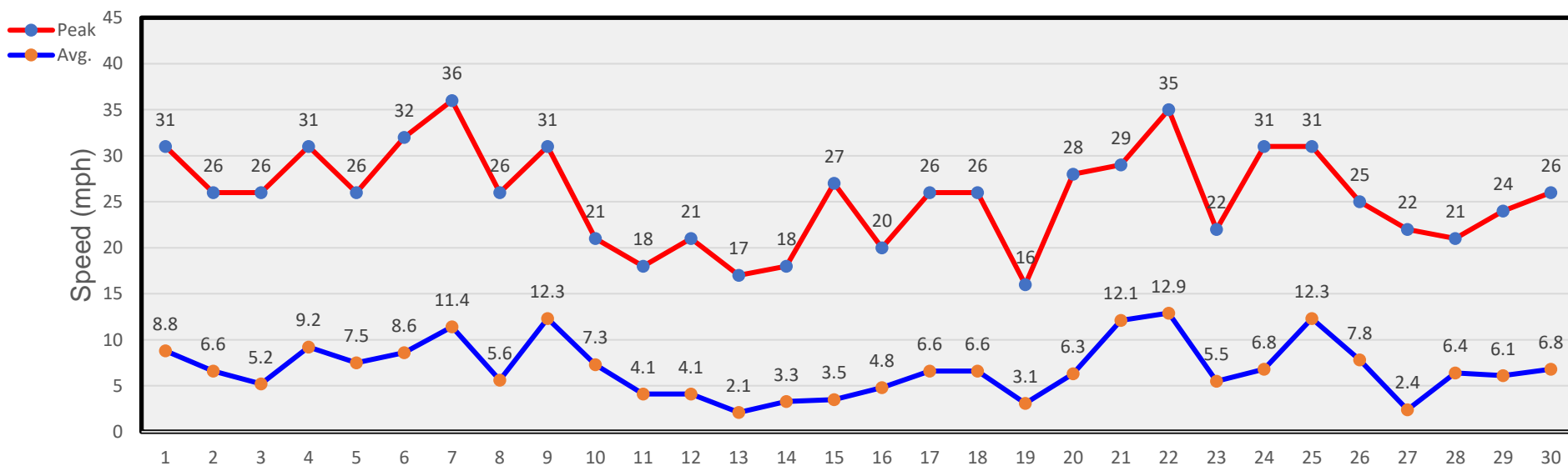
August Winds



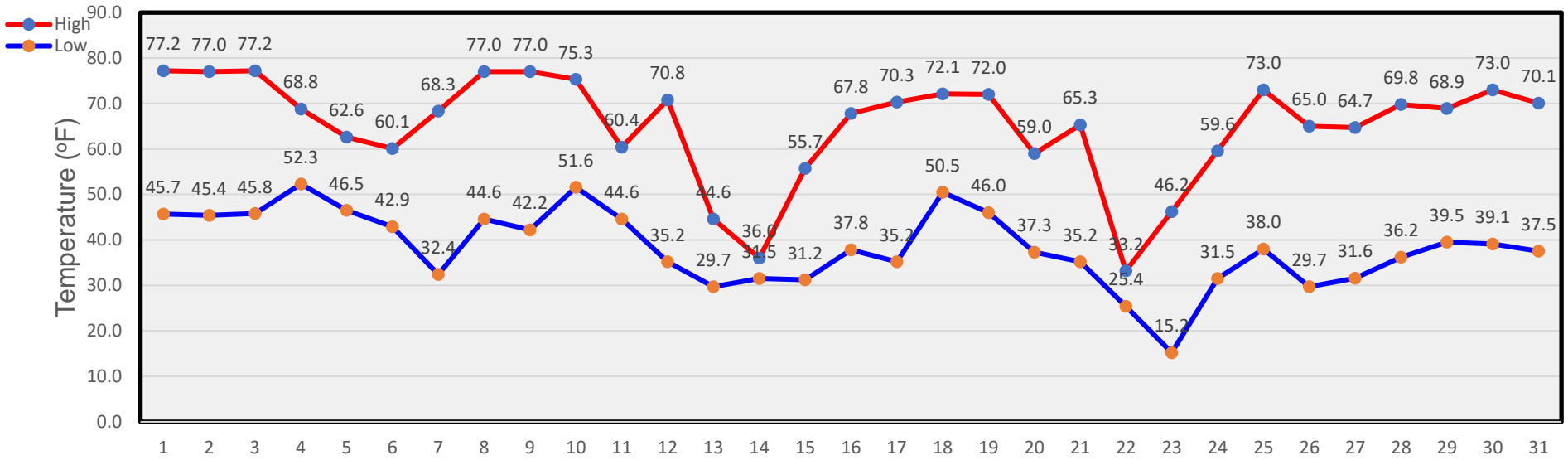
September Temperatures



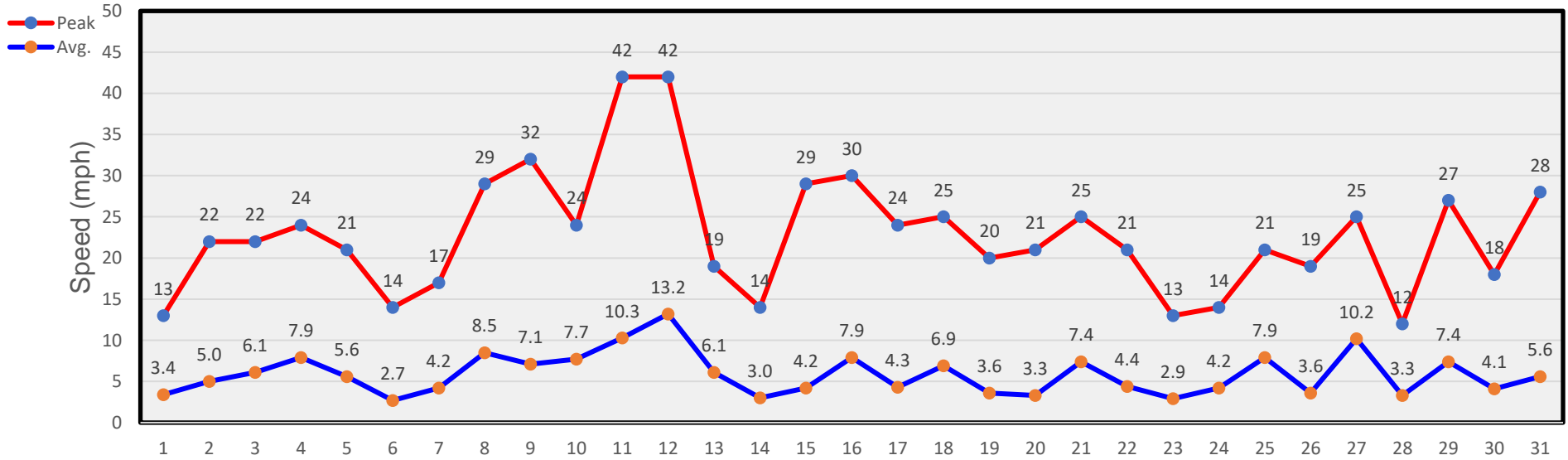
September Winds



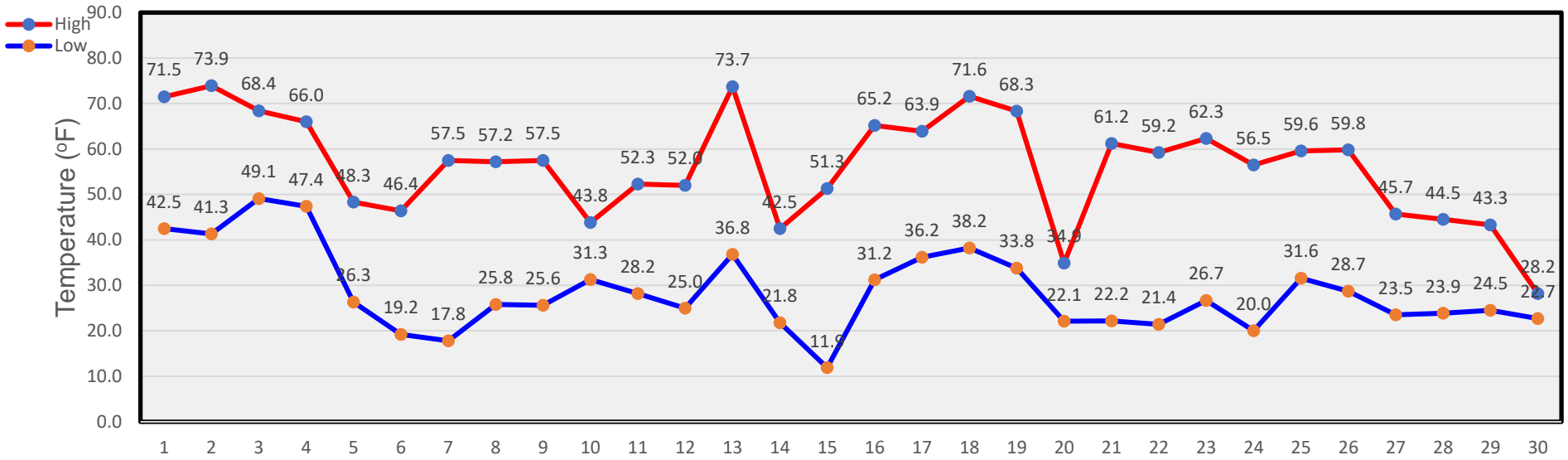
October Temperatures



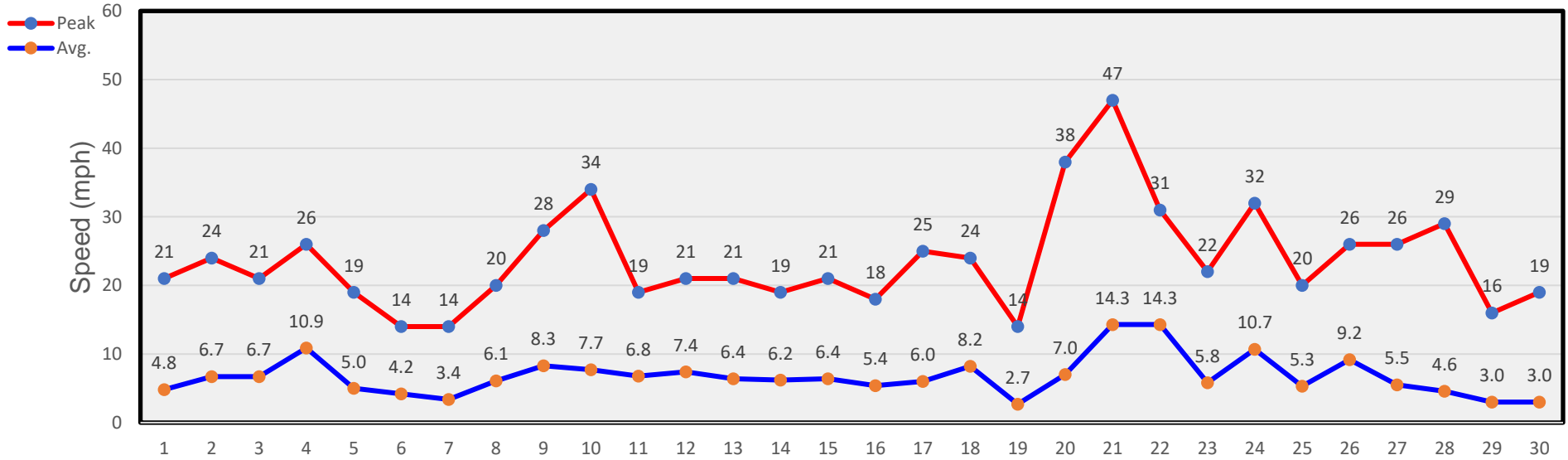
October Winds



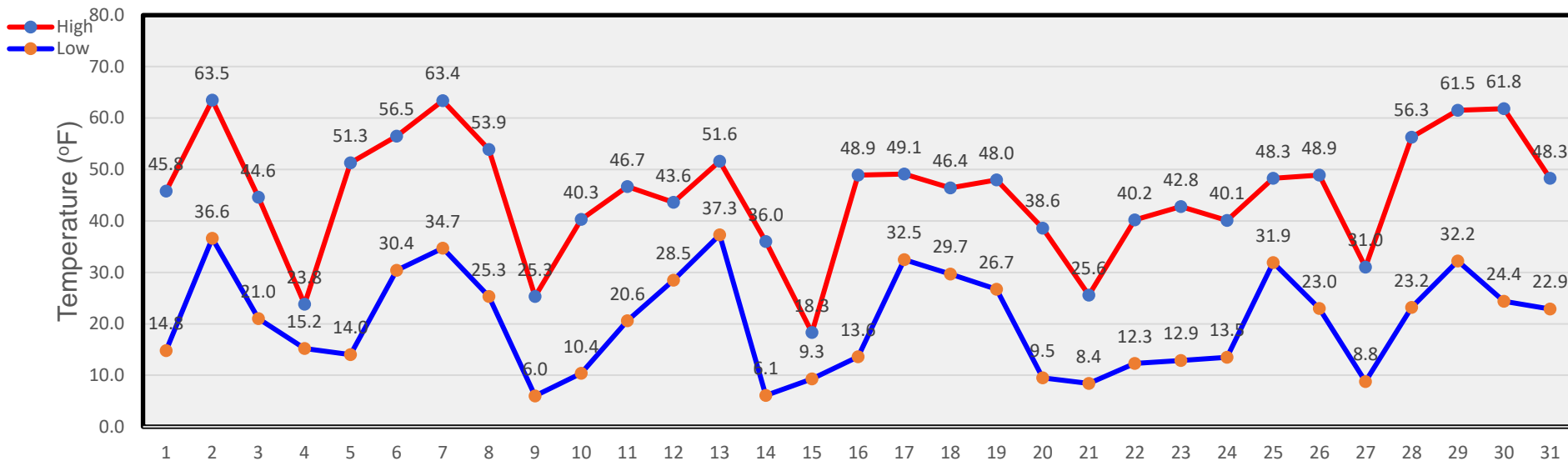
November Temperatures



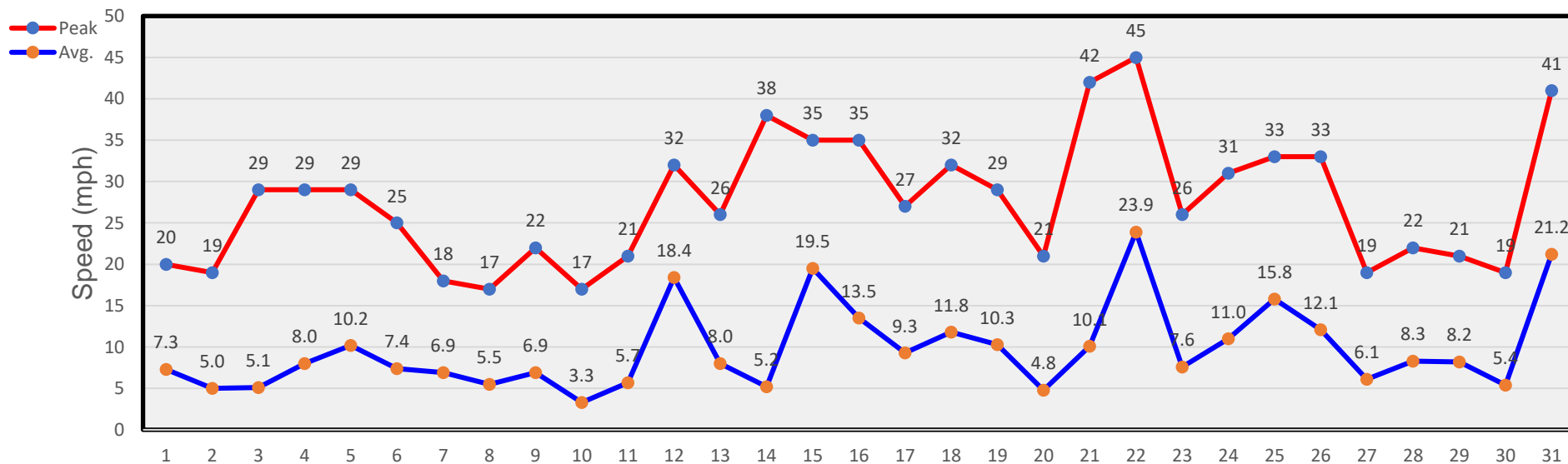
November Winds



December Temperatures



December Winds



Tables

January

Day	Mean Temp.	High Temp.	High Temp. Time	Low Temp.	Low Temp. Time	Heat Degree Days	Cool Degree Days	Precip.	Average Wind Speed	Peak Wind Speed	Peak Wind Time	Wind Dominant Direction
1	16.1	29.0	1:15p	-1.6	4:00a	51.3			9.9	35	11:45p	SE
2	26.4	41.6	12:15p	14.0	5:45a	37.2			18.9	45	9:30p	SSE
3	44.0	54.4	11:15a	24.5	12:15a	25.5			10.5	34	12:15a	SSE
4	41.6	50.2	4:00p	37.2	10:45p	21.3			9.2	27	3:15a	SE
5	47.1	58.3	2:00p	37.8	12:30a	17.0			12.3	35	11:30p	SSE
6	40.9	53.2	12:15p	31.0	12:00m	22.9			10.9	32	1:30a	SE
7	33.3	40.8	1:30p	21.9	8:45p	33.7		0.07	8.2	26	2:15a	SE
8	31.0	37.6	12:00m	16.9	7:45a	37.8			10.1	42	8:30p	SE
9	34.4	46.4	11:00a	24.7	11:00p	29.4			6.3	29	10:30a	NNW
10	29.9	43.9	3:15p	15.4	6:15a	35.3			5.1	24	4:45p	ESE
11	33.0	44.3	1:00p	23.3	10:30p	31.2			3.5	22	2:00p	W
12	25.2	40.3	1:15p	12.3	7:15a	38.7			3.3	16	2:15p	ESE
13	22.9	37.0	12:30p	9.7	7:30a	41.6			3.1	14	2:15a	ESE
14	27.0	42.1	2:45p	11.9	7:45a	38.0			5.3	22	9:15p	SSE
15	36.8	52.9	12:45p	21.6	12:00m	27.8			9.8	28	9:00a	SSE
16	7.5	21.6	12:15a	-7.7	12:00m	58.0		0.10	6.8	30	12:30p	N
17	12.4	26.9	12:45p	-10.0	1:45a	56.6			7.9	28	4:00a	SE
18	15.8	24.1	10:15a	6.9	3:15a	49.5		0.05	3.3	20	12:45p	SSE
19	20.9	34.3	1:45p	6.5	7:15a	44.6			11.7	25	12:00p	SSE
20	33.7	48.5	12:30p	14.4	4:15a	33.5			7.5	26	11:30p	SSE
21	25.3	43.9	1:15p	8.4	7:45a	38.8			6.1	22	12:15a	NW
22	21.1	39.8	2:45p	5.4	6:00a	42.4			1.6	16	12:00m	NW
23	27.1	37.0	12:00p	17.8	12:00m	37.6			7.4	37	11:30p	NW
24	22.0	32.9	2:45p	14.3	5:15a	41.4			24.3	44	7:15a	SSE
25	34.8	47.9	2:00p	21.3	12:30a	30.4			7.9	31	1:00a	SSE
26	37.1	49.4	1:45p	24.4	2:00a	28.1			10.3	33	2:45p	SE
27	48.1	62.0	1:15p	34.3	12:30a	16.8			14.5	34	11:45p	SSE
28	39.3	46.8	9:45a	29.3	12:00m	27.0			13.3	42	3:30a	SSE
29	27.4	40.2	2:45p	14.3	7:00a	37.8			6.0	31	3:30a	WNW
30	28.7	37.5	2:15p	15.9	12:00m	38.3		0.02	5.6	32	11:30p	W
31	23.6	33.7	3:00p	10.5	7:45a	42.9			5.8	33	1:15a	SE
--	29.5 ¹	62.0 ³	27 th	-10.0 ³	17 th	1,112.4 ²	²	0.24 ²	8.6 ¹	45 ³	2 nd	SSE

Footnotes: 1. Average; 2. Sum (total); 3. Max or Min
 Heat Base: 65.0 Cool Base: 65.0
 Method: (High + Low) / 2 (per ¼ hour)

- 7th: First snow of the New Year...about 1 1/2 inches.
- 30th: Only a trace of snow...a really dry month.

February

Day	Mean Temp.	High Temp.	High Temp. Time	Low Temp.	Low Temp. Time	Heat Degree Days	Cool Degree Days	Precip.	Average Wind Speed	Peak Wind Speed	Peak Wind Time	Wind Dominant Direction
1	38.8	50.2	2:45p	28.2	11:45p	25.8			6.4	39	1:15a	SSW
2	31.2	41.8	3:15p	19.1	8:15a	34.5			7.2	35	12:00m	SSE
3	37.1	50.8	1:30p	25.8	3:15a	26.7		0.01	9.9	33	6:45p	SSE
4	33.5	47.0	1:15p	19.2	11:15p	31.9		0.52	7.4	28	12:30p	S
5	13.4	19.2	12:15a	3.4	11:30p	53.7		0.12	6.8	24	1:30a	NNW
6	25.7	48.0	2:00p	3.0	12:15a	39.5			8.6	27	8:00p	SSE
7	30.4	50.2	3:00p	3.5	6:45a	38.1			6.1	29	10:15a	N
8	34.1	39.9	2:00p	27.9	6:15a	31.1			4.6	29	6:00a	WNW
9	37.2	56.6	2:30p	20.5	7:15a	26.5			6.2	26	12:00p	ESE
10	38.2	56.2	12:15p	26.2	7:30a	23.8			4.8	20	9:45p	ESE
11	37.6	51.9	1:00p	24.7	9:30p	26.7			6.8	28	6:30p	N
12	30.3	40.6	1:15p	18.0	5:15a	35.7			6.0	31	12:00m	N
13	43.8	62.4	1:15p	27.8	3:45a	19.9			13.7	36	3:15a	SSE
14	29.1	47.0	1:00a	21.0	8:30p	31.0			5.2	28	3:00a	NNW
15	32.1	45.2	2:15p	21.8	7:30a	31.5			2.3	13	12:30a	NW
16	35.9	55.0	2:30p	23.9	5:45a	25.5			4.2	33	8:15p	ESE
17	20.7	33.7	10:30a	8.8	10:45p	43.8		0.01	3.8	25	12:00m	NNW
18	27.7	41.6	4:15p	13.6	6:45a	37.4		0.07	9.2	29	2:30a	SSE
19	39.0	54.4	1:15p	23.0	7:30a	26.3			4.3	20	4:30a	SSE
20	37.7	51.3	2:30p	28.1	6:45a	25.3			5.1	20	11:30a	SE
21	31.5	38.9	9:45a	22.7	12:00m	34.2		0.02	5.0	21	11:15a	SSE
22	36.6	52.3	2:45p	20.2	6:00a	28.8			5.3	18	12:30a	SSE
23	37.7	48.9	1:00p	26.6	11:30p	27.3			7.3	26	12:15a	N
24	47.4	61.3	11:30a	29.4	12:15a	19.7			10.6	32	6:00a	N
25	35.5	44.6	12:30a	26.6	12:00m	29.4		0.02	3.3	28	12:30a	N
26	33.8	48.5	3:30p	25.3	5:30a	28.1		0.01	3.0	19	7:30p	NNW
27	44.5	58.9	1:15p	21.4	5:30a	24.8			7.2	28	8:15p	SE
28	47.8	60.1	3:00p	32.8	6:45a	18.6			5.5	22	1:00a	N
29	48.9	59.9	1:45p	37.3	8:00a	16.4			8.6	39	11:00p	SE
--	35.1 ¹	62.4 ³	13 th	3.0 ³	6 th	861.9 ²	²	0.78 ²	7.3 ¹	39 ³	1 st	SSE

Footnotes: 1. Average; 2. Sum (total); 3. Max or Min
 Heat Base: 65.0 Cool Base: 65.0
 Method: (High + Low) / 2 (per ¼ hour)

- 5th 7 inches of snow yesterday and last night.
- 6th: Another 2 inches yesterday...and COLD!!!

March

Day	Mean Temp.	High Temp.	High Temp. Time	Low Temp.	Low Temp. Time	Heat Degree Days	Cool Degree Days	Precip.	Average Wind Speed	Peak Wind Speed	Peak Wind Time	Wind Dominant Direction
1	52.9	69.3	1:15p	39.3	3:30a	10.7			12.4	35	12:15a	SSE
2	30.1	48.3	1:30p	18.4	7:30p	31.7		0.45	12.3	38	3:30p	NNW
3	23.1	32.4	4:15p	13.1	6:30p	42.3			9.1	29	12:30a	NNW
4	39.5	55.6	12:30p	22.9	5:00a	25.8			7.1	29	8:30p	SSE
5	21.0	26.0	12:15a	18.3	12:00m	42.9		0.53	4.7	22	2:30a	NNW
6	20.8	30.7	11:00a	12.1	9:45p	43.6			1.8	14	11:45a	NNW
7	29.4	39.5	2:45p	6.1	5:00a	42.2			6.4	26	9:00p	N
8	34.5	41.6	12:00p	26.7	12:30a	30.8			3.5	19	7:45p	NNW
9	32.6	42.8	4:00p	26.0	6:15a	30.6			3.7	19	10:30p	NNW
10	37.2	49.4	11:15a	27.6	11:00p	26.5			5.8	18	8:15a	SSE
11	42.3	61.8	3:45p	24.4	5:45a	21.9			6.0	21	7:15p	SSE
12	47.2	64.7	2:00p	31.6	12:15a	16.9			3.7	22	11:15p	NNW
13	42.5	56.7	3:15p	27.5	7:00a	22.9			4.9	28	12:30a	SE
14	38.9	48.3	11:30a	29.5	12:00m	26.1		0.05	4.9	25	12:15p	NNW
15	36.0	45.8	3:00p	21.8	6:15a	31.2			11.7	38	4:30p	SE
16	34.3	37.0	1:30p	31.0	2:00a	31.0		0.05	11.9	40	2:15p	
17	27.4	34.7	12:15a	20.0	11:30p	37.6		0.10	4.0	17	2:15p	NNW
18	30.9	44.1	3:30p	18.8	3:00a	33.6			3.7	22	10:30a	N
19	41.8	59.6	3:30p	20.3	4:00a	25.1			7.0	26	10:30p	ESE
20	51.6	67.4	1:15p	34.4	12:00m	14.1			8.9	29	5:15a	SSE
21	43.0	60.1	1:30p	24.2	6:15a	22.8			3.3	21	1:45p	ESE
22	33.0	45.4	1:30p	25.8	6:30a	29.4		0.08	4.5	22	11:30a	NNW
23	28.2	33.2	4:15p	23.6	7:30a	36.6			11.0	35	4:30p	SE
24	50.3	69.4	2:00p	28.2	12:15a	16.2			9.4	27	12:15a	SE
25	52.5	70.4	1:45p	31.5	6:30a	14.0			5.5	19	12:00p	SE
26	54.9	70.3	1:15p	33.1	6:00a	13.3			7.4	21	8:30p	SE
27	48.6	62.1	2:45p	39.7	12:00m	14.1			4.1	21	1:45a	NNW
28	37.0	46.1	3:30p	28.2	12:45a	27.8			12.8	41	5:30p	SE
29	48.3	67.3	3:00p	30.7	5:30a	16.0			14.0	44	1:30a	SE
30	44.2	54.1	1:45p	34.4	6:00a	20.8			5.0	28	10:45p	NNW
31	46.2	55.6	12:00m	26.6	11:30p	23.9			6.7	27	12:30p	WSW
--	38.7 ¹	70.4 ³	25 th	6.1 ³	7 th	822.2 ²	²	1.26 ²	7.0 ¹	44 ³	29 th	SE

Footnotes: 1. Average; 2. Sum (total); 3. Max or Min
 Heat Base: 65.0 Cool Base: 65.0
 Method: (High + Low) / 2 (per ¼ hour)

- 2nd: About 5" of WET snow and drifting with 0.45 inches of moisture.
- 6th: Another 6" of snow with 0.53 inches of moisture.

April

Day	Mean Temp.	High Temp.	High Temp. Time	Low Temp.	Low Temp. Time	Heat Degree Days	Cool Degree Days	Precip.	Average Wind Speed	Peak Wind Speed	Peak Wind Time	Wind Dominant Direction
1	32.2	41.9	5:00p	26.0	9:00a	31.0			12.5	47	5:15p	SSE
2	50.0	70.1	2:45p	32.1	6:00a	13.9			14.1	46	1:15a	SE
3	41.5	51.7	12:15a	30.7	12:00m	23.8		0.05	5.6	26	11:15a	NNW
4	42.7	60.4	3:15p	26.6	6:00a	21.5			5.6	25	9:00p	SSE
5	49.5	64.2	12:15p	37.0	11:30p	14.4			9.3	35	2:45p	SSE
6	47.4	62.3	4:45p	27.2	7:00a	20.3			3.8	26	10:45p	NW
7	44.6	64.5	3:45p	33.2	11:45p	16.2			8.4	33	2:30a	SE
8	39.0	56.2	2:00p	25.7	7:15a	24.0			4.4	32	5:00p	N
9	38.2	43.8	3:30p	33.1	6:45a	26.6		0.05	12.3	33	2:15a	SE
10	29.9	34.6	12:15a	23.9	12:00m	35.8		0.15	4.9	21	1:45p	NNW
11	27.2	32.7	11:45a	20.5	5:15a	38.4		0.52	2.9	17	2:30p	SE
12	31.7	44.8	3:45p	18.0	7:15a	33.6			1.9	16	9:45p	NNW
13	40.1	58.4	4:30p	25.3	7:15a	23.2			3.0	25	11:30p	N
14	53.1	72.1	5:00p	41.1	4:45a	8.4			5.8	27	1:00a	SSE
15	60.3	74.4	4:15p	48.5	1:30a	3.5			4.5	27	8:30a	SSE
16	42.9	60.5	2:00p	27.0	12:00m	21.3		0.10	3.9	25	7:45p	N
17	28.2	32.5	6:00p	25.8	12:00m	35.9		0.85	7.8	27	11:45a	NNW
18	38.7	64.2	4:15p	20.5	5:30a	22.7			4.8	19	1:15a	ESE
19	53.7	70.4	2:45p	32.4	7:00a	13.6			7.5	32	10:45p	SE
20	58.5	70.8	2:45p	47.0	7:00a	6.1			4.1	29	1:00a	SSE
21	57.8	67.9	5:30p	40.6	12:00m	10.8			3.5	21	2:30p	N
22	43.6	65.6	4:30p	28.2	7:00a	18.1			6.8	41	6:00p	SSE
23	55.1	75.1	4:45p	44.6	6:45a	5.2			9.5	29	2:00a	SE
24	61.5	75.1	2:30p	48.2	4:15a	3.3			4.2	22	5:00p	WSW
25	44.2	59.3	3:00p	32.1	6:30a	19.3			3.4	16	12:30a	N
26	41.0	58.9	12:00p	28.5	12:00m	21.3			6.0	26	4:00p	N
27	33.9	55.6	5:45p	19.1	4:30a	27.7			3.5	21	10:45p	SE
28	51.0	69.9	3:00p	28.8	3:00a	15.7			3.8	16	12:15a	E
29	62.5	75.1	4:00p	42.4	6:30a	6.3			4.6	22	4:30p	ESE
30	64.6	76.0	2:15p	53.9	6:00a	0.1			6.3	24	3:30a	SSE
--	45.5 ¹	76.0 ³	30 th	18.0 ³	12 th	561.5 ²	²	1.72 ²	6.0 ¹	47 ³	1 st	SE

Footnotes: 1. Average; 2. Sum (total); 3. Max or Min
 Heat Base: 65.0 Cool Base: 65.0
 Method: (High + Low) / 2 (per ¼ hour)

- 12th: About 7" of snow over the past 2 days with 0.7" of much needed precip.
- 17th: Almost 9" of very wet snow last night and today with near 1" of moisture!!! GREAT!!

May

Day	Mean Temp.	High Temp.	High Temp. Time	Low Temp.	Low Temp. Time	Heat Degree Days	Cool Degree Days	Precip.	Average Wind Speed	Peak Wind Speed	Peak Wind Time	Wind Dominant Direction
1	46.9	56.9	12:45a	28.2	11:30p	22.4			5.6	43	1:00p	WSW
2	36.9	52.0	1:30p	23.6	4:45a	27.2		0.02	4.7	25	5:30p	N
3	36.9	52.0	3:00p	21.1	6:30a	28.5			6.9	31	5:15p	N
4	53.5	68.4	1:30p	35.8	7:00a	12.9			5.4	27	12:15a	SE
5	55.7	71.3	2:15p	40.6	5:15a	9.0			4.8	29	6:30p	
6	61.0	72.7	6:00p	50.1	12:15a	3.6			8.7	30	3:00p	SSE
7	50.1	57.2	4:45p	43.9	8:15a	14.4		0.05	3.4	28	11:45a	N
8	55.0	71.0	2:00p	39.1	11:45p	41.9			7.0	28	1:15a	SE
9	50.0	74.6	5:30p	32.1	4:00a	11.7			5.1	27	8:00a	E
10	48.3	63.7	2:00p	32.9	12:00m	16.7			5.6	34	2:15p	N
11	47.5	77.2	4:15p	26.7	4:15a	13.1			8.4	29	7:30a	SE
12	61.7	78.1	3:00p	47.6	3:30a	2.2			6.7	24	6:45a	SSE
13	40.3	48.0	12:45p	36.0	12:00m	23.0		0.23	5.4	20	4:30a	NNW
14	40.5	55.0	12:15p	32.2	6:00a	21.4		0.32	3.9	22	3:00p	SE
15	40.9	51.1	5:15p	33.2	9:15a	22.8		0.52	4.9	22	5:45a	NNW
16	44.1	57.6	12:45p	29.5	6:00a	21.5			2.8	17	1:15p	NNW
17	57.2	68.8	4:45p	44.1	2:00a	8.5			4.2	21	4:15p	N
18	65.4	81.1	2:45p	41.8	2:30a	3.6			3.0	12	4:45a	SE
19	74.1	85.7	5:00p	49.9	2:00a		2.8		1.8	12	12:15p	E
20	66.9	75.1	1:45p	55.7	2:45a		0.4	0.54	6.5	27	6:15p	SE
21	67.2	80.3	2:00p	52.3	5:45a		1.3	0.02	11.4	31	1:45a	SSE
22	53.5	61.8	5:15p	44.1	6:15a	12.1			6.9	46	1:15p	SSE
23	48.0	59.5	12:30p	39.5	11:45p	15.5			9.5	40	7:15p	SSE
24	51.8	67.3	3:30p	38.0	3:15a	12.3			8.5	24	4:00a	SE
25	66.3	82.4	3:30p	49.8	5:30a		1.1		9.4	32	12:00p	SE
26	62.3	73.9	5:15p	48.8	7:15a	3.7			5.8	28	1:00p	NNW
27	52.3	61.2	3:00p	46.2	11:15p	11.3			4.6	21	4:00p	NNW
28	56.6	71.6	2:00p	45.1	4:00a	6.7			14.2	43	3:45p	SE
29	67.8	81.6	4:00p	53.3	12:00m		2.4		9.4	31	2:30p	SSE
30	67.1	82.2	3:45p	50.8	7:00a		1.5		3.9	21	4:45p	S
31	65.2	79.6	3:45p	45.8	5:45a	2.3			4.5	21	11:30p	NNW
--	54.5 ¹	85.7 ³	19 ^h	21.2 ³	3 rd	368.2 ²	9.6 ²	1.70 ²	6.9 ¹	46 ³	22 nd	SE

Footnotes: 1. Average; 2. Sum (total); 3. Max or Min
Heat Base: 65.0 Cool Base: 65.0
Method: (High + Low) / 2 (per ¼ hour)

June

Day	Mean Temp.	High Temp.	High Temp. Time	Low Temp.	Low Temp. Time	Heat Degree Days	Cool Degree Days	Precip.	Average Wind Speed	Peak Wind Speed	Peak Wind Time	Wind Dominant Direction
1	68.0	81.4	4:15p	51.4	6:00a		1.4		9.9	30	6:00p	SE
2	74.6	89.7	1:30p	59.0	4:00a		9.3		8.9	31	2:15p	SSE
3	70.7	83.2	4:00p	51.3	6:30a		2.3		4.6	17	6:00p	N
4	7.1	79.0	5:45p	57.3	11:30p		3.2		6.2	25	7:30a	S
5	52.1	58.3	5:00p	45.5	9:30a	13.1		0.02	3.9	24	10:00a	E
6	63.6	85.5	3:15p	41.8	2:00a	1.3			8.0	22	11:30p	SSE
7	74.9	88.6	3:15p	59.5	5:30a		9.1		8.4	26	1:15a	SSE
8	58.0	77.0	3:15p	43.9	6:00a	4.5			4.1	16	9:30a	NW
9	58.0	82.0	5:15p	39.2	3:00a	4.4			5.9	19	3:45a	SE
10	71.3	86.7	3:30p	46.1	4:30a		1.4		9.9	27	8:30a	SSE
11	71.6	82.8	3:00p	53.1	11:45p		2.9		6.4	26	5:15p	WSW
12	60.8	78.8	4:00p	39.1	4:15a	6.0			4.7	20	5:45a	WNW
13	62.7	79.6	2:45p	37.5	6:30a	6.5			7.9	28	7:15p	SE
14	71.2	88.8	5:30p	54.2	6:15a		6.5		6.8	27	12:45a	SSE
15	79.5	91.0	2:30p	51.4	5:45a		6.2		4.3	18	11:15a	NW
16	62.7	72.0	2:00p	49.8	5:30a	4.1			5.9	25	2:15p	NNW
17	71.0	87.8	1:30p	54.5	12:15a		6.2		7.5	24	10:15p	SE
18	74.8	89.7	3:00p	58.1	4:15a		8.9		5.5	21	8:45a	SE
19	62.0	83.2	1:45p	51.1	5:00a		2.1	0.22	3.9	20	12:00m	ESE
20	62.1	76.3	12:30p	51.0	6:00a	1.3		0.08	7.6	24	6:00p	SSE
21	62.0	78.3	5:30p	50.7	11:45p	0.5		0.27	3.5	27	12:15p	SSE
22	63.8	78.5	12:00p	48.2	1:15a	1.7			7.1	24	1:15p	SSE
23	64.2	82.2	11:15a	48.9	5:15a		0.6		3.8	19	3:15p	SSE
24	67.5	83.6	12:15p	47.9	5:15a		0.8		3.7	27	4:15p	N
25	74.1	88.6	6:00p	59.3	3:45a		8.9		6.2	26	5:15a	SSE
26	71.8	89.0	4:45p	53.5	6:30a		6.3		3.6	19	7:15p	SSE
27	74.2	91.6	2:00p	55.0	6:45a		8.3		5.3	24	6:30p	ESE
28	64.9	76.1	2:15p	50.7	6:30a	1.6		0.20	3.9	17	10:00a	N
29	61.2	73.5	3:00p	52.6	6:00a	2.0			5.4	21	1:30p	SE
30	67.2	82.2	1:45p	55.9	6:30a		4.1		5.8	27	12:30a	SSE
--	64.9 ¹	91.6 ³	27 th	37.5 ³	13 th	47.0 ²	88.3 ²	0.79 ²	6.0 ¹	31 ³	2 nd	SSE

Footnotes: 1. Average; 2. Sum (total); 3. Max or Min
Heat Base: 65.0 Cool Base: 65.0
Method: (High + Low) / 2 (per ¼ hour)

July

Day	Mean Temp.	High Temp.	High Temp. Time	Low Temp.	Low Temp. Time	Heat Degree Days	Cool Degree Days	Precip.	Average Wind Speed	Peak Wind Speed	Peak Wind Time	Wind Dominant Direction
1	70.7	85.9	12:15p	56.3	5:00a		6.1		6.3	26	8:45p	SSE
2	69.0	84.9	1:45p	50.8	5:00a		2.8		4.5	14	12:15p	N
3	65.7	80.3	2:45p	53.8	5:30a		2.1		6.5	28	10:15a	SE
4	71.8	88.8	5:00p	58.3	6:00a		8.6		8.4	24	2:30a	SSE
5	75.2	91.0	12:15p	57.3	11:30p		9.2	0.32	6.2	21	1:45a	SSE
6	65.1	84.0	1:30p	52.8	3:30a		3.4	0.38	4.5	19	9:30p	SE
7	62.5	75.8	4:15p	55.0	2:45a		0.4	0.18	4.1	21	5:15a	N
8	63.9	74.9	2:15p	53.5	5:30a	0.8			4.2	20	6:30p	SSE
9	61.2	74.6	2:00p	48.6	6:00a	3.4			5.8	26	4:45p	E
10	71.7	87.8	1:30p	55.3	3:30a		6.6		11.6	28	5:15a	SE
11	79.8	92.5	2:45p	62.1	7:30a		12.3		5.7	21	2:00a	SSE
12	64.2	72.5	4:00p	53.9	6:45a	1.8			4.8	20	2:45a	N
13	65.4	78.6	2:00p	51.3	2:15a	0.1			7.6	27	11:30p	SSE
14	67.5	85.3	1:00p	57.5	2:30a		6.4	0.05	9.1	30	9:15p	SSE
15	70.2	89.0	3:00p	53.8	6:15a		6.4		6.8	26	5:30p	SSE
16	72.6	86.3	12:00p	59.2	6:15p		7.8	0.02	7.7	26	8:15p	SSE
17	68.9	84.0	1:00p	56.5	12:00m		5.3	0.20	7.3	26	7:00p	
18	62.5	82.0	12:15p	51.7	5:45a		1.8	0.16	2.8	20	2:15p	SSE
19	70.2	86.5	5:15p	56.0	1:30a		6.3		8.0	25	6:45p	SSE
20	70.3	81.4	4:15p	61.6	6:00a		6.5		11.7	27	6:45p	SSE
21	73.8	86.5	3:15p	62.3	5:30a		9.4		10.0	27	1:30a	SSE
22	75.1	85.5	4:15p	62.4	7:30a		8.9		8.9	27	11:45p	SSE
23	70.8	87.4	4:15p	59.0	11:15p		8.2	0.45	9.1	25	4:30p	SSE
24	68.4	80.3	5:00p	58.0	12:45a		4.2		3.4	24	7:00a	SSE
25	64.8	82.2	12:00p	57.0	10:30p		4.6	0.07	3.8	21	6:45p	SSE
26	67.8	80.7	12:45p	58.1	12:00m		4.4		7.0	38	10:00p	SSE
27	71.9	84.3	5:00p	58.7	12:15a		6.5		3.9	18	11:00a	N
28	73.1	89.0	2:15p	57.8	6:30a		8.4		2.1	17	3:15p	N
29	68.5	84.7	4:30p	55.0	3:45a		4.8	0.17	3.3	25	11:00a	N
30	75.8	91.6	3:45p	55.1	1:30a		8.3		7.0	26	10:30p	SSE
31	78.7	93.4	3:15p	64.2	8:00a		13.8		8.6	27	1:30a	N
--	69.6 ¹	93.4 ³	31 st	48.6 ³	9 th	6.1 ²	173.4 ²	2.00 ²	6.5 ¹	38 ³	26 th	SSE

Footnotes: 1. Average; 2. Sum (total); 3. Max or Min
 Heat Base: 65.0 Cool Base: 65.0
 Method: (High + Low) / 2 (per ¼ hour)

- 1st: This past June we had the least precipitation for a June since 1999.

August

Day	Mean Temp.	High Temp.	High Temp. Time	Low Temp.	Low Temp. Time	Heat Degree Days	Cool Degree Days	Precip.	Average Wind Speed	Peak Wind Speed	Peak Wind Time	Wind Dominant Direction
1	80.2	91.6	1:30p	67.8	5:15a		14.7		9.7	25	12:30p	SSE
2	80.1	92.3	3:30p	68.4	3:30a		15.4		13.5	33	6:30p	SE
3	74.3	90.1	1:45p	64.7	6:15a		12.4		8.9	31	1:30a	SE
4	69.7	86.7	11:00a	57.3	4:15a		7.0	0.35	4.7	21	1:30p	SSE
5	68.1	82.6	1:15p	58.9	11:45p		5.8		3.3	17	1:15p	SSE
6	65.0	84.0	2:15p	52.2	2:45a		3.1	0.62	5.5	25	8:45a	ESE
7	62.4	70.4	1:15p	58.3	9:00a	0.7			2.0	16	1:30p	N
8	66.0	78.5	12:45p	58.3	3:30p		3.4	0.26	7.0	28	11:30p	SE
9	67.9	80.3	12:30p	60.2	10:45p		5.3		5.1	25	1:30a	SSE
10	64.0	75.1	12:00p	56.0	7:00a		0.6	0.10	1.9	13	11:30a	NNW
11	69.9	81.0	3:00p	55.6	5:00a		3.3		4.0	22	10:00p	N
12	71.0	84.9	12:30p	59.8	12:00m		7.3		6.6	28	10:15p	SSE
13	69.2	86.3	2:15p	54.5	3:30a		5.4		4.6	26	5:00a	N
14	64.9	80.9	5:15p	54.1	6:15a		2.5	0.10	4.6	20	12:30a	N
15	53.0	62.1	2:30p	48.9	11:15p	9.5		0.82	4.1	25	2:45p	SSE
16	51.6	57.6	4:15p	48.9	3:00a	11.8		1.02	2.6	17	3:00p	ESE
17	52.1	63.9	1:15p	46.4	12:00m	9.8		0.12	5.0	22	8:30a	SSE
18	53.9	66.3	5:45p	41.2	7:00a	11.3			2.9	19	4:45p	N
19	61.1	74.4	2:00p	43.9	5:00a	5.8			6.3	27	11:00p	SE
20	64.0	81.6	1:45p	55.0	6:45a		3.3		8.2	28	2:30a	SSE
21	69.6	86.3	2:00p	54.2	6:00a		5.3		8.6	25	9:30p	SSE
22	75.8	89.9	2:30p	55.1	4:15a		7.5		6.6	22	12:15a	N
23	66.2	81.1	1:45p	52.8	6:45a		1.9		4.8	26	3:45p	N
24	67.5	81.8	2:15p	56.7	12:30a		4.3		6.3	20	10:00a	SSE
25	66.8	81.8	2:45p	55.6	2:00a		3.7		7.3	19	4:00a	SSE
26	68.4	81.2	11:30a	57.5	5:15a		4.3	0.05	9.0	24	4:30p	SSE
27	70.4	84.1	2:00p	52.3	6:30a		3.2		6.4	25	6:15p	N
28	65.8	75.3	4:00p	54.4	11:30p	0.1			6.8	24	11:30a	N
29	59.0	78.1	2:45p	48.0	5:30a	2.0		0.37	6.6	39	8:15p	ESE
30	60.9	72.7	3:15p	52.9	4:15a	2.2			13.8	40	2:45p	SSE
31	60.6	68.8	1:00p	56.9	2:00a	2.1		0.08	16.2	41	12:15p	SE
--	65.8 ¹	92.3 ³	2 nd	41.2 ³	18 th	55.3 ²	119.5 ²	3.89 ²	6.5 ¹	41 ³	31 st	SSE

Footnotes: 1. Average; 2. Sum (total); 3. Max or Min
 Heat Base: 65.0 Cool Base: 65.0
 Method: (High + Low) / 2 (per ¼ hour)

September

Day	Mean Temp.	High Temp.	High Temp. Time	Low Temp.	Low Temp. Time	Heat Degree Days	Cool Degree Days	Precip.	Average Wind Speed	Peak Wind Speed	Peak Wind Time	Wind Dominant Direction
1	65.4	80.5	4:15p	56.5	6:15a		3.5		8.8	31	12:45a	SE
2	54.2	63.5	5:00p	45.7	12:00m	10.4			6.6	26	10:30a	NNW
3	51.8	68.3	4:30p	37.9	7:15a	11.9		0.12	5.2	26	10:45p	ESE
4	58.7	74.0	4:15p	41.6	6:30a	7.2			9.2	31	8:45p	SE
5	54.9	65.6	4:00p	46.5	8:15a	9.0			7.5	26	12:15a	N
6	58.6	77.9	3:30p	46.8	12:30a	2.7			8.6	32	2:45a	NNW
7	62.7	77.4	3:15p	49.8	12:45a	1.4			11.4	36	10:15p	SSE
8	49.6	57.6	4:30p	44.1	10:00a	14.2			5.6	26	1:30a	N
9	56.8	71.1	1:15p	44.8	12:15a	7.1			12.3	31	11:00a	SSE
10	65.9	78.6	2:45p	53.1	3:00a		0.8		7.3	21	6:45a	SW
11	55.8	66.9	3:00p	46.1	7:00a	8.5		0.13	4.1	18	2:45p	N
12	55.3	66.3	1:30p	49.5	7:15a	7.1		0.24	4.1	21	3:45p	SSE
13	60.1	70.9	4:15p	46.5	11:30p	6.3			2.1	17	5:00p	N
14	54.1	67.6	4:15p	44.3	7:15a	9.1			3.3	18	2:30p	N
15	59.4	72.5	4:00p	46.4	12:00m	5.5			3.5	27	1:15a	N
16	62.6	78.6	3:15p	42.2	5:30a	4.6			4.8	20	10:45p	SSE
17	62.8	76.5	1:45p	47.4	7:30a	3.0			6.6	26	11:45p	SSE
18	60.3	75.6	12:30p	44.9	6:45a	4.8			6.6	26	3:00a	SE
19	56.6	72.5	3:00p	40.6	6:30a	8.5			3.1	16	2:00p	N
20	57.4	75.1	3:45p	43.6	7:00a	5.7			6.3	28	10:15p	E
21	62.8	82.4	3:30p	53.6	6:15a		3.0		12.1	29	5:00a	SE
22	66.1	79.9	2:30p	52.5	7:15a		1.2		12.9	35	6:15a	SSE
23	61.7	75.4	4:45p	46.4	7:30a	4.1			5.5	22	1:30a	NNW
24	60.9	80.1	1:45p	44.2	5:45a	2.8			6.8	31	9:15p	E
25	64.7	78.8	3:00p	54.8	7:30a		1.8		12.3	31	11:00p	SE
26	66.0	80.1	1:00p	52.3	7:45a		1.2		7.8	25	3:00a	SSE
27	60.7	78.3	2:30p	46.2	7:15a	2.8		0.03	2.4	22	3:30p	NNW
28	60.8	78.5	3:15p	46.0	3:45a	2.8			6.4	21	10:00a	SSE
29	57.2	69.3	4:30p	44.8	5:00a	7.9			6.1	24	11:00p	NNW
30	64.4	78.6	2:30p	44.5	7:00a	3.5			6.8	26	1:00a	N
--	59.6 ¹	82.4 ³	21 st	37.9 ³	3 rd	150.6 ²	11.5 ²	0.52 ²	6.9 ¹	36 ³	7 th	SSE

Footnotes: 1. Average; 2. Sum (total); 3. Max or Min
 Heat Base: 65.0 Cool Base: 65.0
 Method: (High + Low) / 2 (per ¼ hour)

October

Day	Mean Temp.	High Temp.	High Temp. Time	Low Temp.	Low Temp. Time	Heat Degree Days	Cool Degree Days	Precip.	Average Wind Speed	Peak Wind Speed	Peak Wind Time	Wind Dominant Direction
1	59.8	77.2	1:15p	45.7	6:30a	3.6			3.4	13	10:45p	N
2	61.4	77.0	1:45p	45.4	12:00m	3.8			5.0	22	5:45p	SSE
3	59.2	77.2	12:30p	45.8	12:30a	3.5			6.1	22	6:00p	SSE
4	59.3	68.8	1:00p	52.3	6:30a	4.4			7.9	24	3:30p	SSE
5	53.3	62.6	2:15p	46.5	10:15p	10.5		0.24	5.6	21	5:45a	SSE
6	51.1	60.1	2:45p	42.9	7:15a	13.5			2.7	14	2:15a	N
7	46.8	68.3	4:15p	32.4	6:00a	14.6			4.2	17	10:45a	ESE
8	63.1	77.0	2:45p	44.6	4:30a	4.2			8.5	29	11:00p	N
9	64.0	77.0	4:00p	42.2	7:30a	5.4			7.1	32	2:45p	N
10	62.7	75.3	2:30p	51.6	10:30p	1.5			7.7	24	3:15p	S
11	53.8	60.4	10:45a	44.6	6:00a	12.5		2.75	10.3	42	11:30p	SSE
12	55.4	70.8	4:30p	35.2	12:00m	12.0			13.2	42	10:15a	S
13	36.2	44.6	3:15p	29.7	6:30a	27.8		0.21	6.1	19	2:00a	NNW
14	33.9	36.0	12:15a	31.5	8:00a	31.3		0.36	3.0	14	5:30a	WNW
15	41.4	55.7	4:30p	31.2	1:45a	21.5			4.2	29	11:30p	NNW
16	48.3	67.8	3:00p	37.8	7:15a	12.2			7.9	30	12:45a	SSE
17	50.7	70.3	2:15p	35.2	7:30a	12.3			4.3	24	11:30p	ESE
18	60.3	72.1	12:45p	50.5	2:45a	3.7			6.9	25	4:15p	SSE
19	57.8	72.0	3:00p	46.0	12:00m	6.0			3.6	20	2:30a	N
20	45.1	59.0	3:45p	37.3	8:15a	16.8		0.12	3.3	21	9:45p	NNW
21	51.7	65.3	3:30p	35.2	11:15p	14.8		0.25	7.4	25	2:45a	N
22	28.7	33.2	2:45p	25.4	8:45a	35.7			4.4	21	2:30a	NNW
23	30.9	46.2	3:15p	15.2	6:30a	34.3			2.9	13	11:00p	E
24	43.3	59.6	11:15a	31.5	2:00a	19.5			4.2	14	2:00a	ESE
25	54.2	73.0	2:15p	38.0	5:30a	9.5			7.9	21	3:15a	SSE
26	47.9	65.0	11:30a	29.7	11:15p	17.7			3.6	19	1:15p	NNW
27	46.6	64.7	12:00p	31.6	12:45a	16.9			10.2	25	1:15a	N
28	51.3	69.8	1:45p	36.2	1:30a	12.0			3.3	12	7:45p	E
29	55.0	68.9	1:15p	39.5	12:45a	10.8			7.4	27	7:15p	ESE
30	57.3	73.0	1:00p	39.1	4:30a	9.0			4.1	18	10:00p	N
31	53.5	70.1	11:30a	37.5	5:00a	11.2			5.6	28	9:45p	N
--	51.1 ¹	77.2 ³	1 st	15.2 ³	23 rd	412.3 ²	2	3.93 ²	5.9 ¹	42 ³	11 th	SSE

Footnotes: 1. Average; 2. Sum (total); 3. Max or Min
 Heat Base: 65.0 Cool Base: 65.0
 Method: (High + Low) / 2 (per ¼ hour)

- 12th: A very welcome 2 ¾" of rain yesterday afternoon and last night interspersed with gusts of high wind ... the highest one-day rainfall that I have recorded.
- 15th: About 2 1/2" of very wet snow yesterday ... first of the Season.

November

Day	Mean Temp.	High Temp.	High Temp. Time	Low Temp.	Low Temp. Time	Heat Degree Days	Cool Degree Days	Precip.	Average Wind Speed	Peak Wind Speed	Peak Wind Time	Wind Dominant Direction
1	55.4	71.5	2:00p	42.5	11:15p	8.0			4.8	21	1:00a	ESE
2	57.4	73.9	1:00p	41.3	2:45a	7.4			6.7	24	11:45p	ESE
3	57.0	68.4	2:00p	49.1	8:45p	6.3			6.7	21	12:15a	N
4	54.5	66.0	1:00p	47.4	11:15p	8.3			10.9	26	6:30p	N
5	38.2	48.3	12:30a	26.3	11:45p	27.7			5.0	19	12:30a	W
6	32.0	46.4	1:45p	19.2	4:45a	32.2			4.2	14	2:15p	ESE
7	37.6	57.5	2:15p	17.8	1:30a	27.3			3.4	14	2:00a	ESE
8	41.8	57.2	2:30p	25.8	6:00a	23.5			6.1	20	10:00p	N
9	42.5	57.5	11:45a	25.6	6:00a	23.5			8.3	28	9:30p	SE
10	36.4	43.8	10:00a	31.3	11:45p	27.5		0.10	7.7	34	12:45a	N
11	39.5	52.3	1:30p	28.2	6:00a	24.8			6.8	19	4:30p	ESE
12	40.3	52.0	2:15p	25.0	7:00a	26.5			7.4	21	10:15p	SSE
13	51.3	73.7	2:00p	36.8	7:30a	9.8			6.4	21	12:30a	SSE
14	28.5	42.5	1:30a	21.8	12:00m	32.8		0.06	6.2	19	4:15a	NNW
15	33.7	51.3	1:45p	11.9	4:30a	33.4			6.4	21	8:45p	N
16	45.8	65.2	2:15p	31.2	6:15a	16.8			5.4	18	4:15p	E
17	49.0	63.9	1:45p	36.2	3:00a	14.9			6.0	25	8:00p	N
18	54.3	71.6	12:30p	38.2	5:00a	10.1			8.2	24	3:45p	N
19	49.6	68.3	1:45p	33.8	11:45p	13.9			2.7	14	2:45p	ESE
20	25.2	34.9	12:15a	22.1	9:30a	36.5			7.0	38	11:15p	NNW
21	36.3	61.2	2:30p	22.2	6:00a	23.3			14.3	47	5:15a	SSE
22	40.3	59.2	2:30p	21.4	5:45a	24.7			14.3	31	4:15p	SSE
23	42.3	62.3	11:15a	26.7	12:00m	20.5			5.8	22	12:30a	N
24	38.4	56.5	12:15p	20.0	4:30a	26.8			10.7	32	4:30p	SSE
25	44.0	59.6	12:45p	31.6	10:30p	19.4			5.3	20	3:30a	N
26	44.2	59.8	1:00p	28.7	2:00a	20.8			9.2	26	2:15p	N
27	29.9	45.7	12:45a	23.5	8:30p	30.4		0.05	5.5	26	5:45a	NNW
28	31.7	44.5	1:00p	23.9	6:15a	30.8		0.04	4.6	29	2:45a	N
29	30.8	43.3	12:30p	24.5	7:30a	31.1		0.26	3.0	16	12:15a	NNW
30	24.6	28.2	12:15a	22.7	4:15a	39.5		0.25	3.0	19	1:00p	NNW
--	41.1 ¹	73.9 ³	2 nd	11.9 ³	15 th	678.4 ²	2	0.76 ²	6.7 ¹	47 ³	21 st	N

Footnotes: 1. Average; 2. Sum (total); 3. Max or Min
 Heat Base: 65.0 Cool Base: 65.0
 Method: (High + Low) / 2 (per ¼ hour)

December

Day	Mean Temp.	High Temp.	High Temp. Time	Low Temp.	Low Temp. Time	Heat Degree Days	Cool Degree Days	Precip.	Average Wind Speed	Peak Wind Speed	Peak Wind Time	Wind Dominant Direction
1	32.3	45.8	3:45p	14.8	7:30a	34.7			7.3	20	11:15a	ESE
2	48.8	63.5	11:45a	36.6	12:30a	15.0			5.0	19	12:45p	WSW
3	27.7	44.6	12:30a	21.0	7:15a	32.2		0.07	5.1	29	11:45p	NNW
4	19.4	23.8	12:15a	15.2	8:45p	45.5			8.0	29	12:15a	NNW
5	30.7	51.3	2:45p	14.0	6:30a	32.3			10.2	29	2:30a	SE
6	43.1	56.5	10:45a	30.4	3:15a	21.5			7.4	25	8:45p	SSE
7	49.9	63.4	2:00p	34.7	5:45a	15.9			6.9	18	12:30a	SSE
8	39.4	53.9	10:15a	25.3	12:00m	25.4			5.5	17	10:45p	N
9	15.4	25.3	12:15a	6.0	8:00p	49.4		1.13	6.9	22	10:45p	NNW
10	27.3	40.3	1:30p	10.4	12:15a	39.7			3.3	17	3:00p	NNW
11	32.4	46.7	11:45a	20.6	12:45a	31.3			5.7	21	3:00a	SSE
12	35.7	43.6	9:45p	28.5	12:15a	29.0			18.4	32	6:30a	SSE
13	43.4	51.6	1:45p	37.3	4:30a	20.6			8.0	26	12:30a	S
14	16.8	36.0	5:00a	6.1	5:45p	44.0			5.2	38	12:45p	ESE
15	15.5	18.3	2:15p	9.3	3:30a	51.2			19.5	35	10:00a	SSE
16	27.5	48.9	12:15p	13.6	5:30a	33.8			13.5	35	2:00a	SE
17	38.6	49.1	1:30p	32.5	5:30a	24.2			9.3	27	8:45p	SE
18	35.9	46.4	11:00a	29.7	11:15p	26.9			11.8	32	12:00p	SE
19	35.5	48.0	12:00p	26.7	4:15a	27.7			10.3	29	8:45a	SSE
20	28.5	38.6	1:30p	9.5	11:00p	41.0			4.8	21	11:45a	WSW
21	15.9	25.6	1:45p	8.4	7:30a	48.0			10.1	42	12:00m	SSE
22	23.8	40.2	4:30p	12.3	7:30a	38.8			23.9	45	5:30a	SE
23	29.3	42.8	1:15p	12.9	10:45p	37.2			7.6	26	1:30a	S
24	27.8	40.1	2:15p	13.5	1:30a	38.2			11.0	31	11:30a	SSE
25	37.8	48.3	1:45p	31.9	6:30a	24.9			15.8	33	10:15p	SE
26	33.5	48.9	11:30a	23.0	8:30p	29.0			12.1	33	7:00a	SSE
27	21.6	31.0	2:45p	8.8	7:45a	45.1		0.03	6.1	19	10:45p	SSE
28	39.0	56.3	1:15p	23.2	7:30a	25.3			8.3	22	6:45p	ESE
29	46.6	61.5	1:45p	32.2	4:45a	18.2			8.2	21	4:15p	SSE
30	44.2	61.8	12:15p	24.4	11:30p	21.9			5.4	19	8:00a	N
31	34.7	48.3	2:45p	22.9	7:15a	29.4			21.2	41	4:15a	SE
--	32.2 ¹	63.5 ³	2 nd	6.0 ³	9 th	997.0 ²	2	1.23 ²	9.7 ¹	45 ³	22 nd	SSE

Footnotes: 1. Average; 2. Sum (total); 3. Max or Min
 Heat Base: 65.0 Cool Base: 65.0
 Method: (High + Low) / 2 (per ¼ hour)

- 9th...About one foot of snow last night and this morning...with more coming down. 0.85" of moisture.