



Santa Fe Trail Ranch

Climatological Data
for

2022

The climatological data in this document represents a compilation of the Weather Stats pages from the original Santa Fe Trail Ranch web site and continuing data collection since moving to the new SFTR web site.

Until April 2012, longtime resident Walt Wolff collected and posted daily weather data. But the wintery weather and work associated with maintaining the beautiful Loma Lobo property caused Joyce and Walt to switch to part-time status. Walt gave Robert L. Scott the weather equipment and Bob posted the weather updates until his equipment failed in January 2018. Since then, the data has come from the StargateCOlorado weather station (same type of equipment that Walt/Bob used) maintained by Ernie Parker / Sharon Sorenson.

The data is broken into two sections: the charts in the first section are a synopsis of the weather on the Ranch. For more detailed data (and an aid to help you sleep!), see the monthly climatological tables in the second section.

Notes:

- The StargateCOlorado weather station is at the south end of the Ranch and at a higher elevation than the station maintained by Walt Wolff & Bob Scott. As a result, you will find that, on average, the temperature readings will be slightly lower, and the precipitation readings will be slightly higher than those reported by Bob/Walt's stations.
- The data shown on the various pages starts at a high level and gets more detailed the further down you go.
 - The highest-level charts show the precipitation, snow, temperature, and winds for the entire year.
 - The middle-level charts show the temperature and winds for each month of the year.
 - The lowest-level tables provide all the data collected by the weather station.
 - The snow data has only been collected since 2015 by Ernie / Sharon and does not come from the weather station.
 - What's the definition of "Mean Temperature"? Unlike most weather information, where the "Average Temperature" is just the average of the highest and lowest temperatures of the day, the weather station captures the temperature every 15 minutes, collecting 96 readings per day. The "Mean Temperature" is the average of all 96 readings, giving you a more accurate value.
- Prior to 2022, the times shown in the climatological tables are based on a 12-hour (AM/PM) clock. Starting in 2022, the times listed are based on a 24-hour clock. The data collection program suddenly switched modes.

Enjoy!!

--Ernie Parker

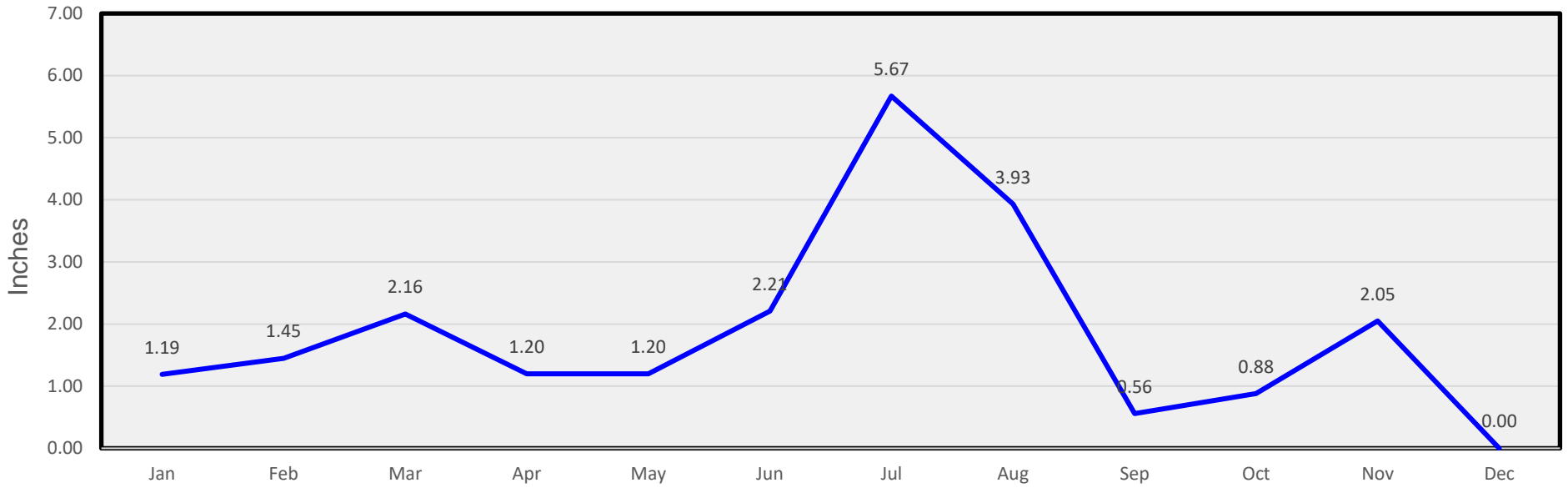
Contents

Charts	5
Monthly Precipitation.....	6
Monthly Snow	6
Monthly Temperatures	7
Monthly Winds	7
January Temperatures.....	8
January Winds	8
February Temperatures	9
February Winds.....	9
March Temperatures.....	10
March Winds	10
April Temperatures	11
April Winds.....	11
May Temperatures.....	12
May Winds	12
June Temperatures.....	13
June Winds	13
July Temperatures	14
July Winds.....	14
August Temperatures	15
August Winds.....	15
September Temperatures.....	16
September Winds	16
October Temperatures.....	17
October Winds	17
November Temperatures.....	18
November Winds	18
December Temperatures.....	19
December Winds	19

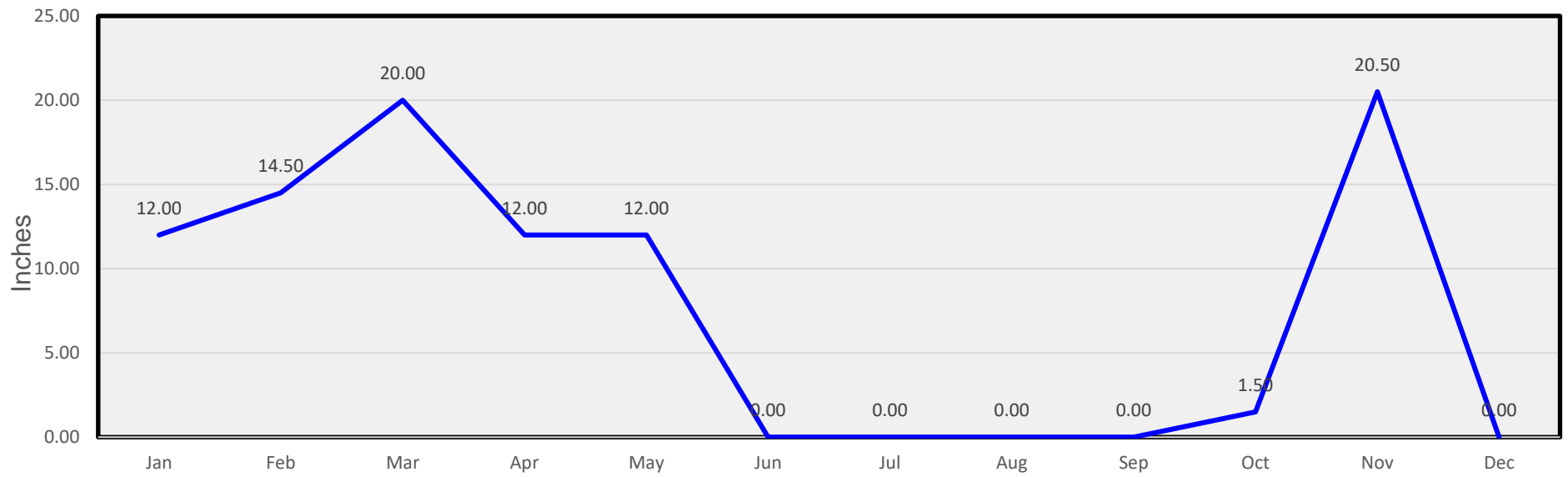
Tables	20
January	21
February	22
March	23
April	24
May	25
June	26
July	27
August	28
September	29
October	30
November	31
December	32

Charts

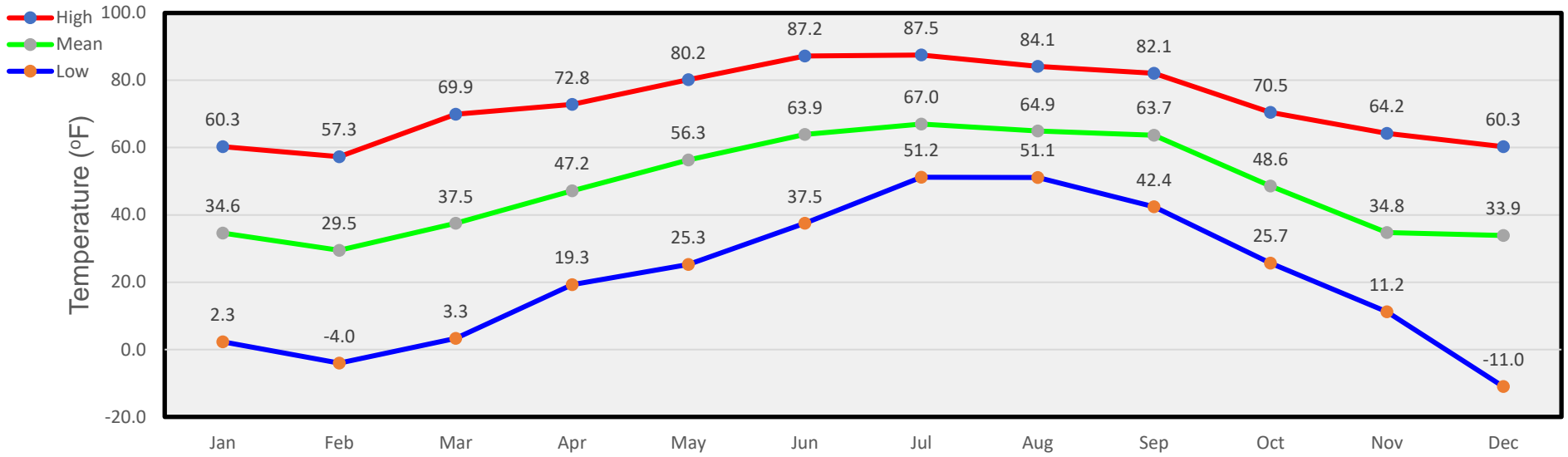
Monthly Precipitation



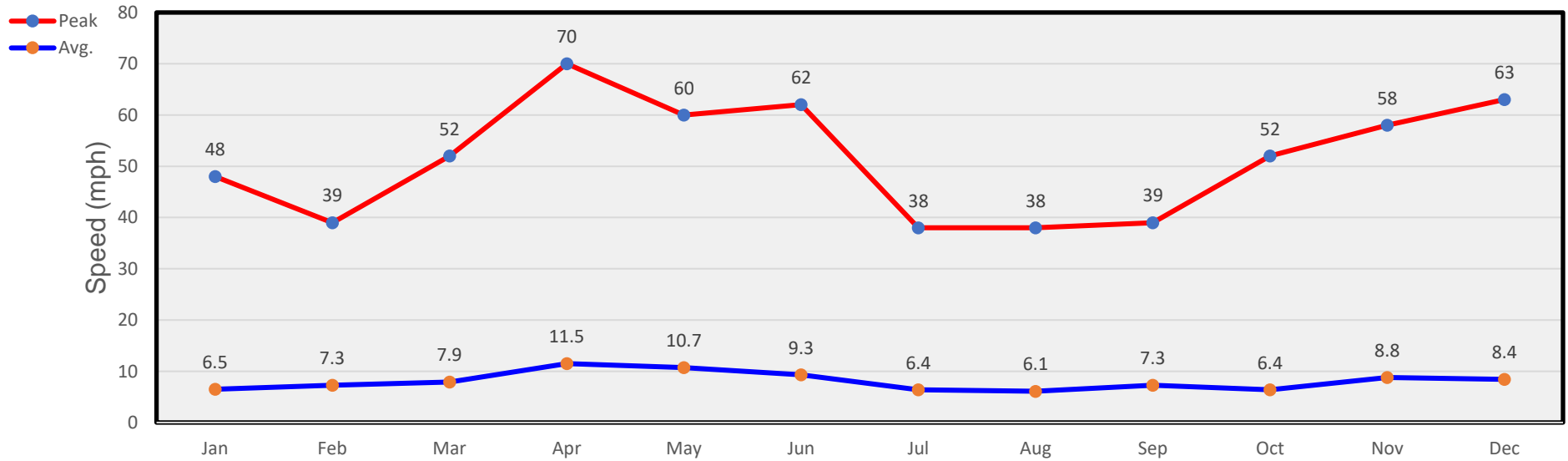
Monthly Snow



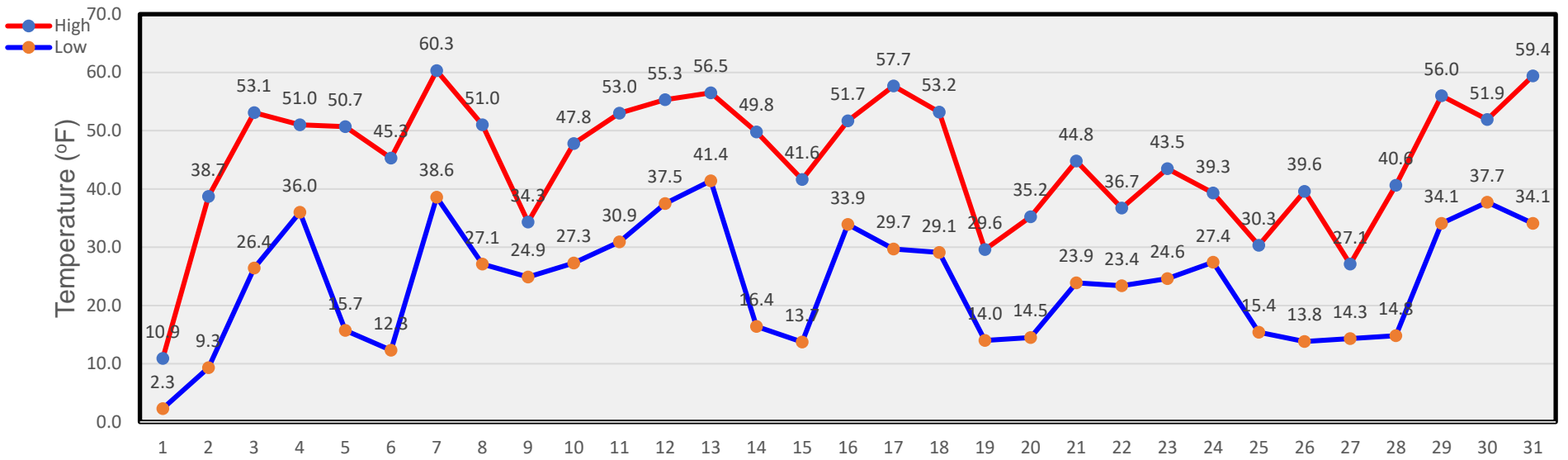
Monthly Temperatures



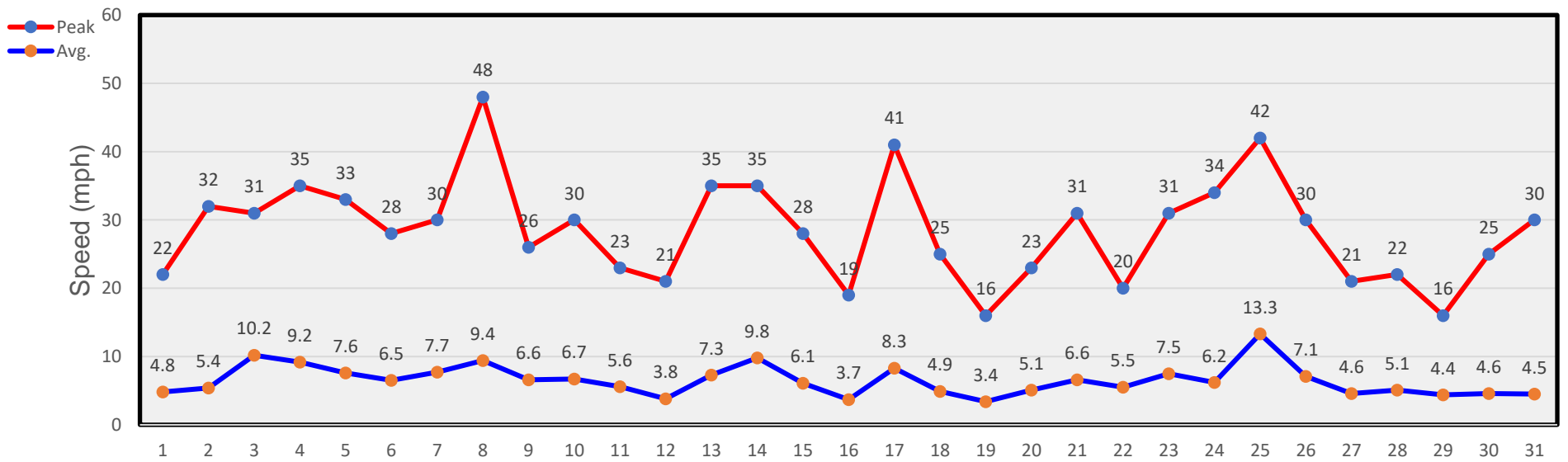
Monthly Winds



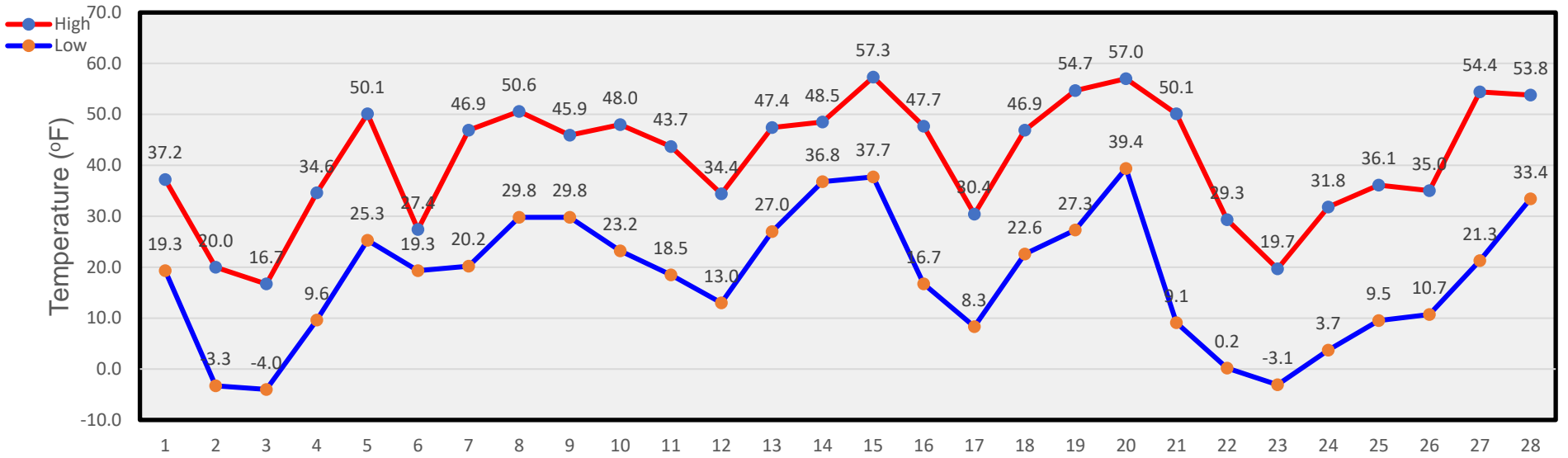
January Temperatures



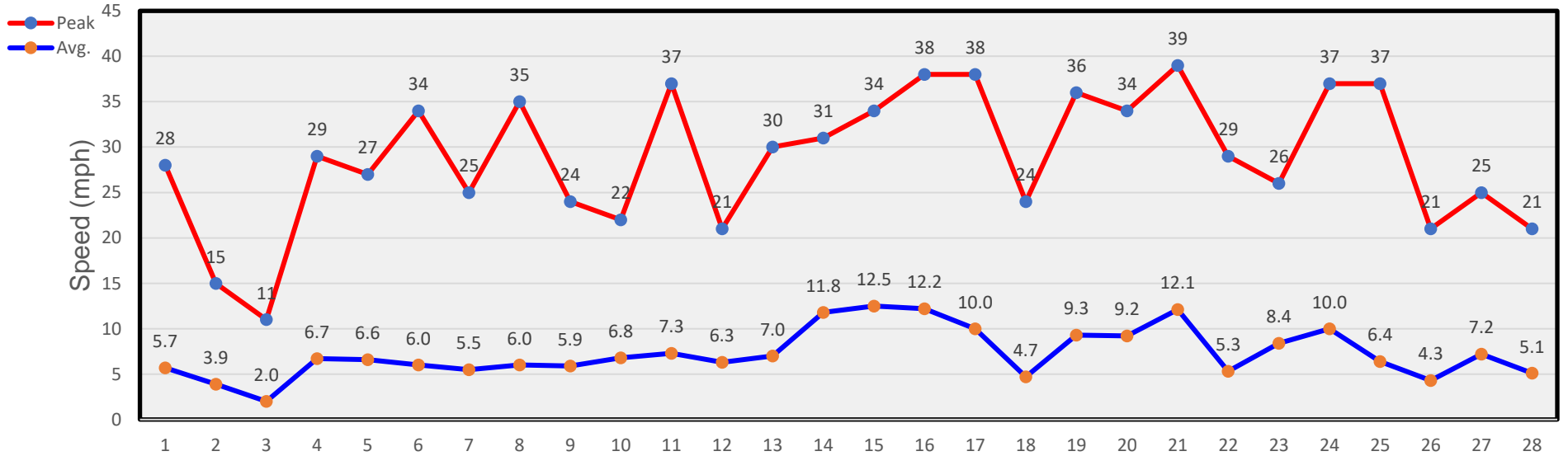
January Winds



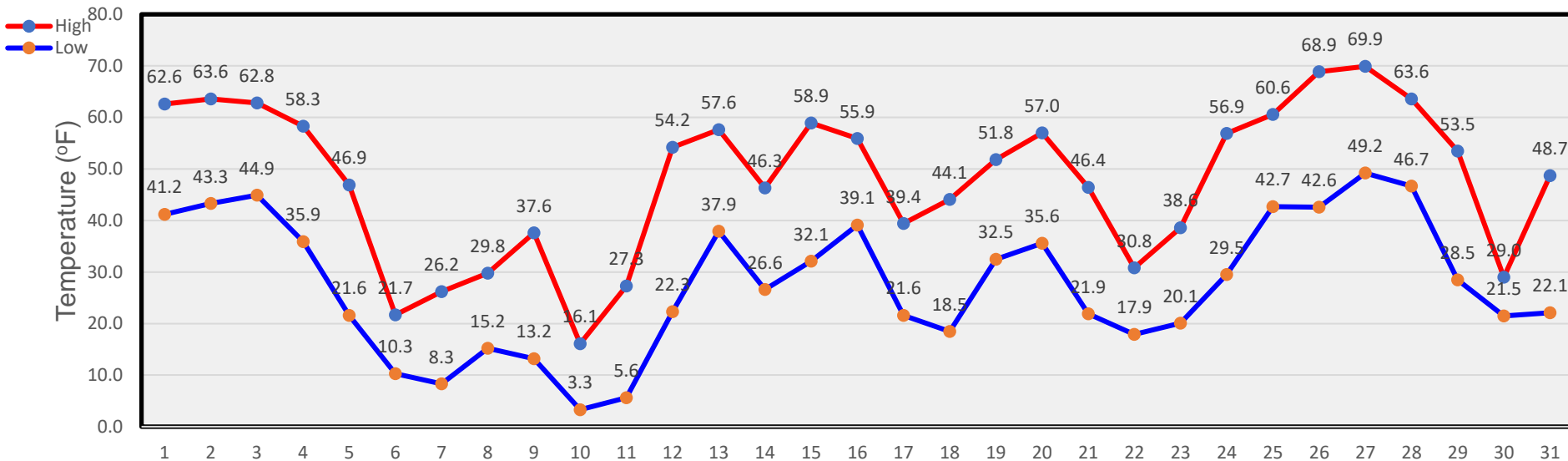
February Temperatures



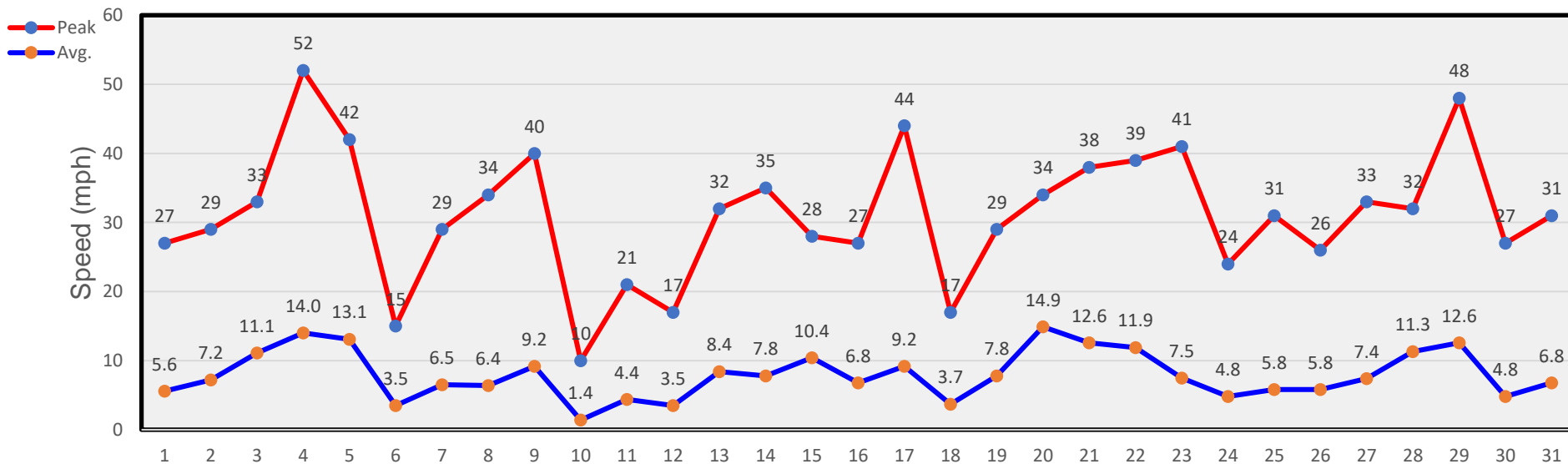
February Winds



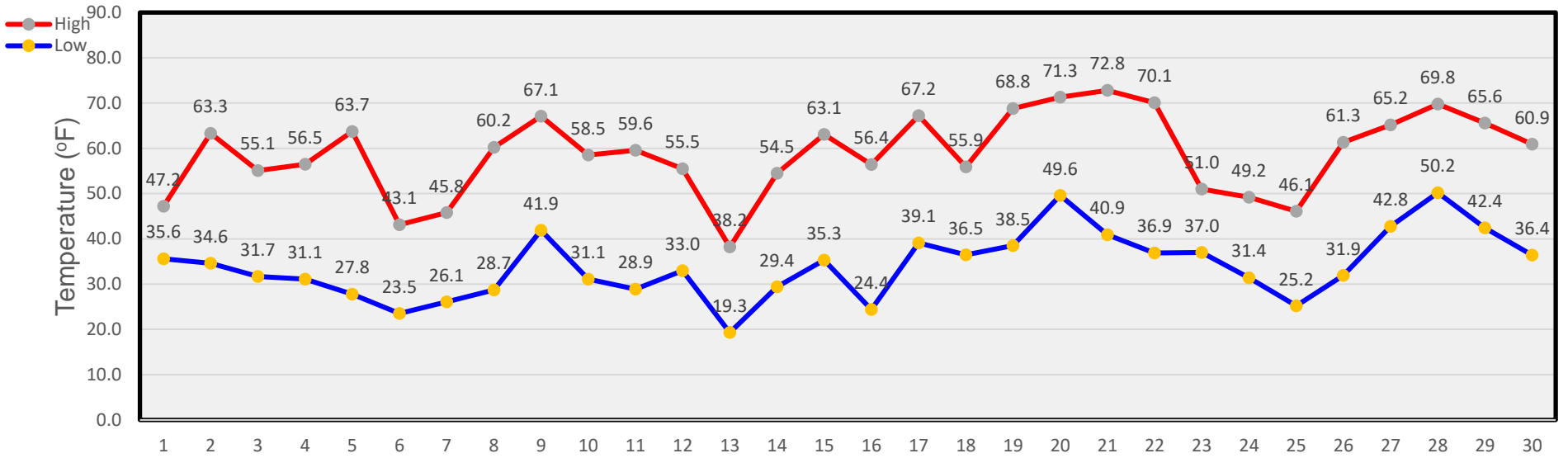
March Temperatures



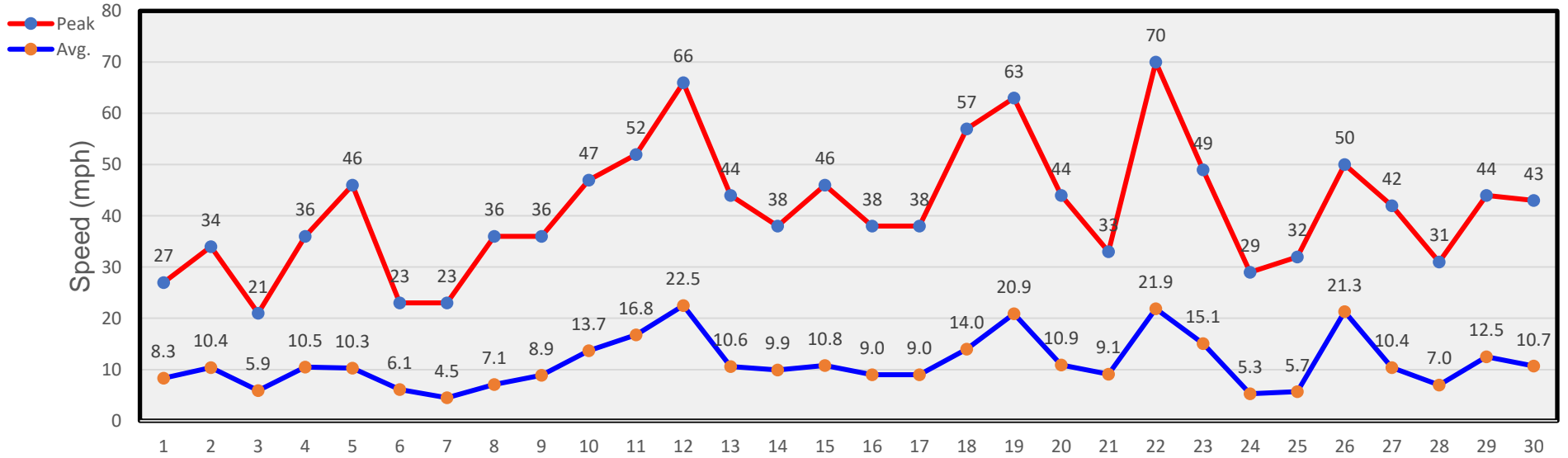
March Winds



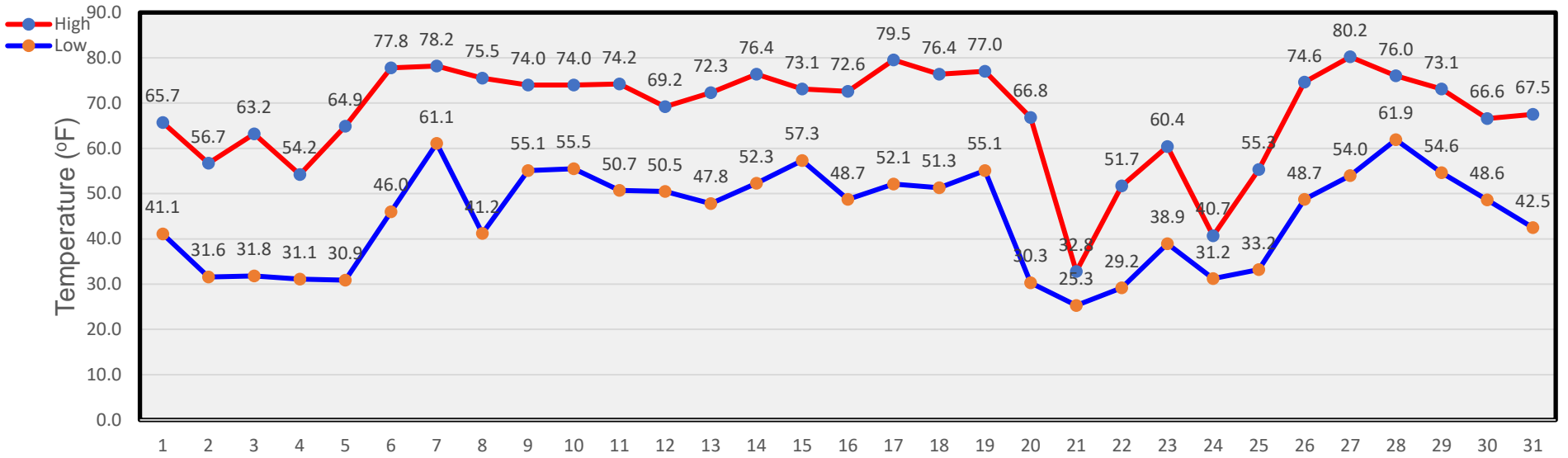
April Temperatures



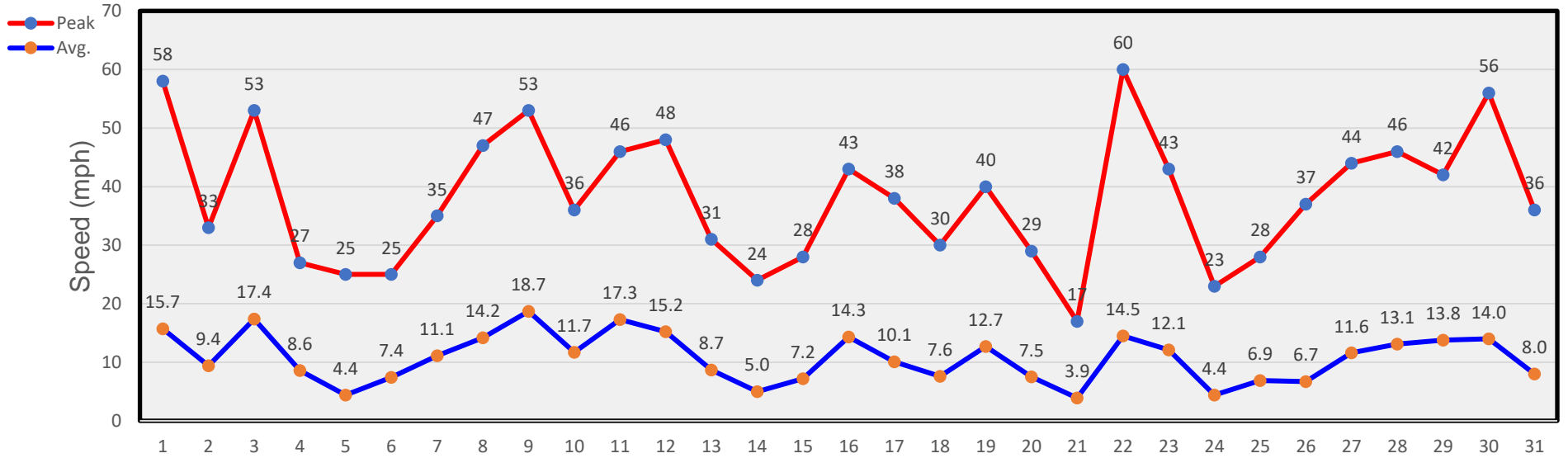
April Winds



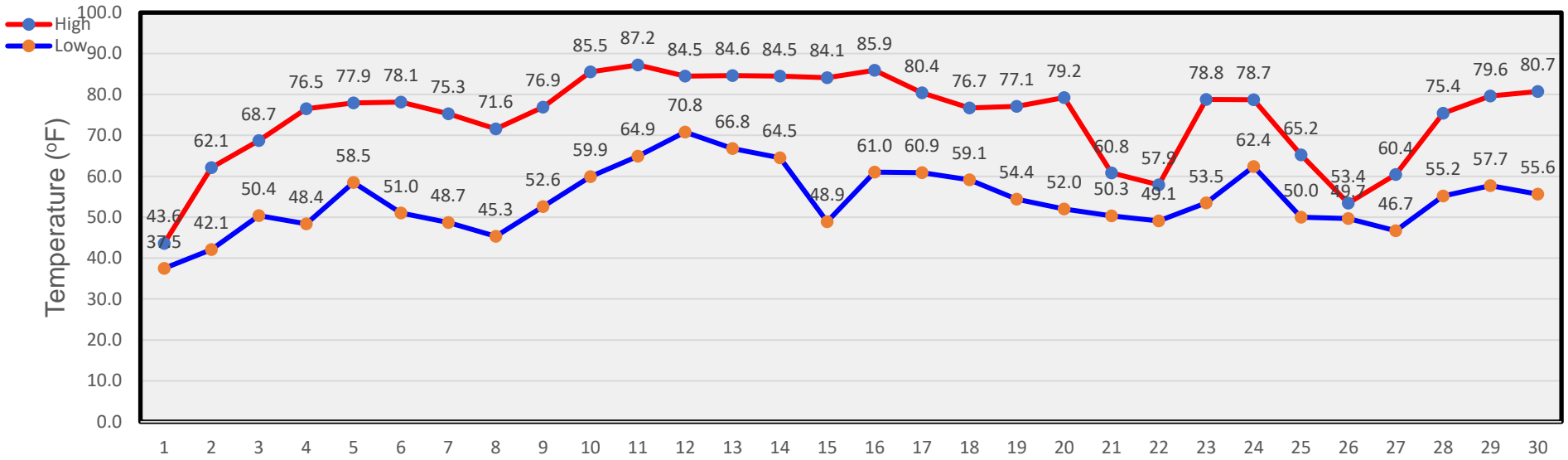
May Temperatures



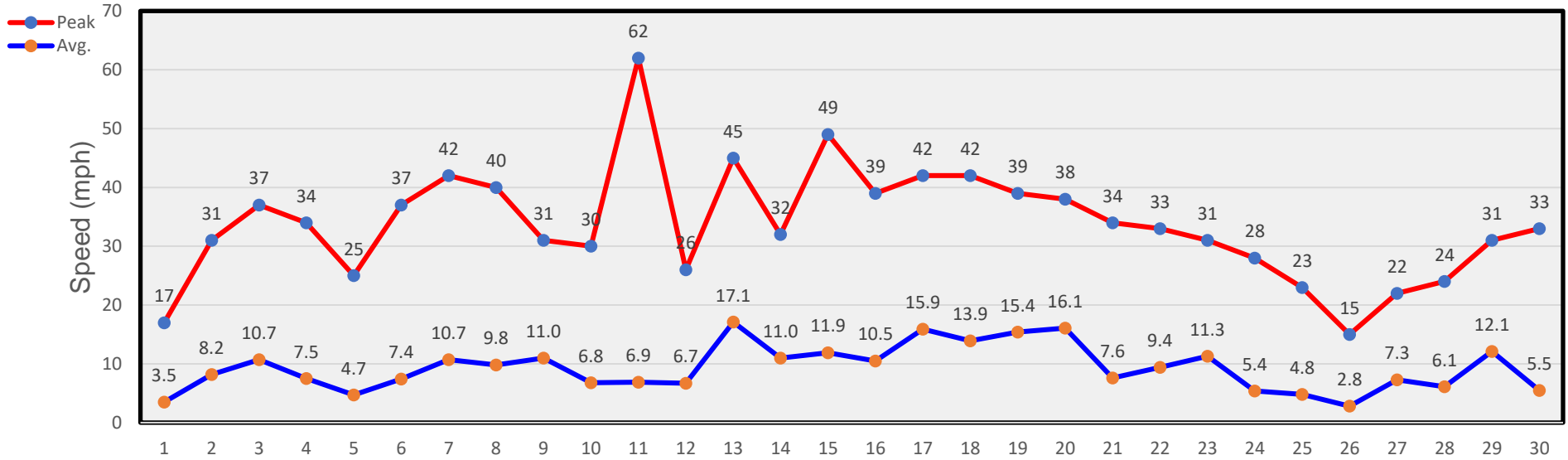
May Winds



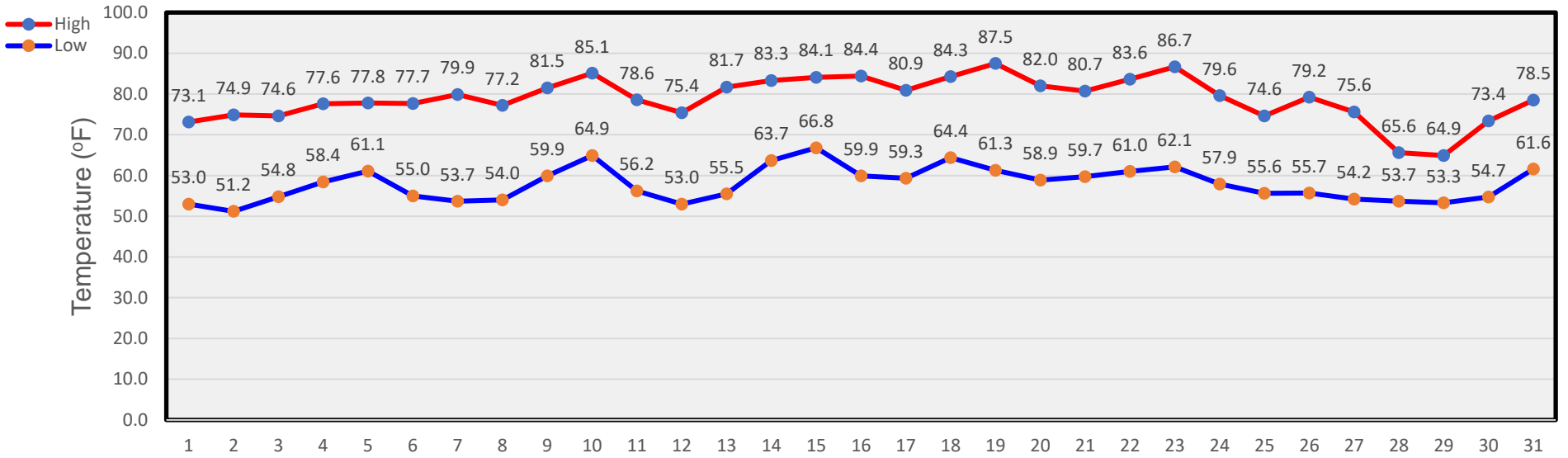
June Temperatures



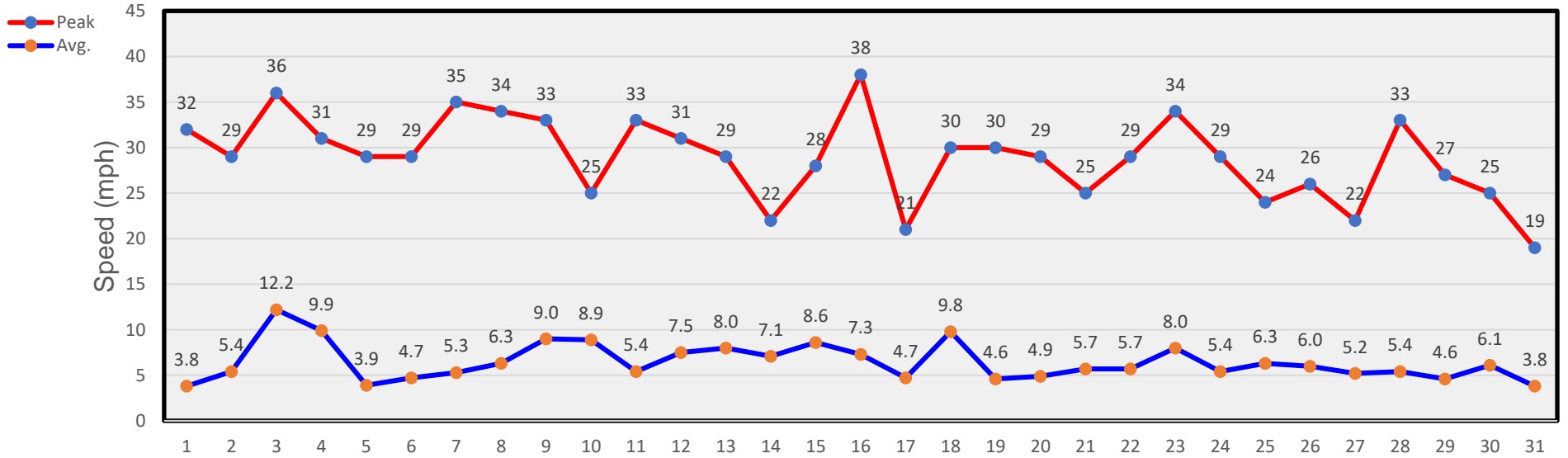
June Winds



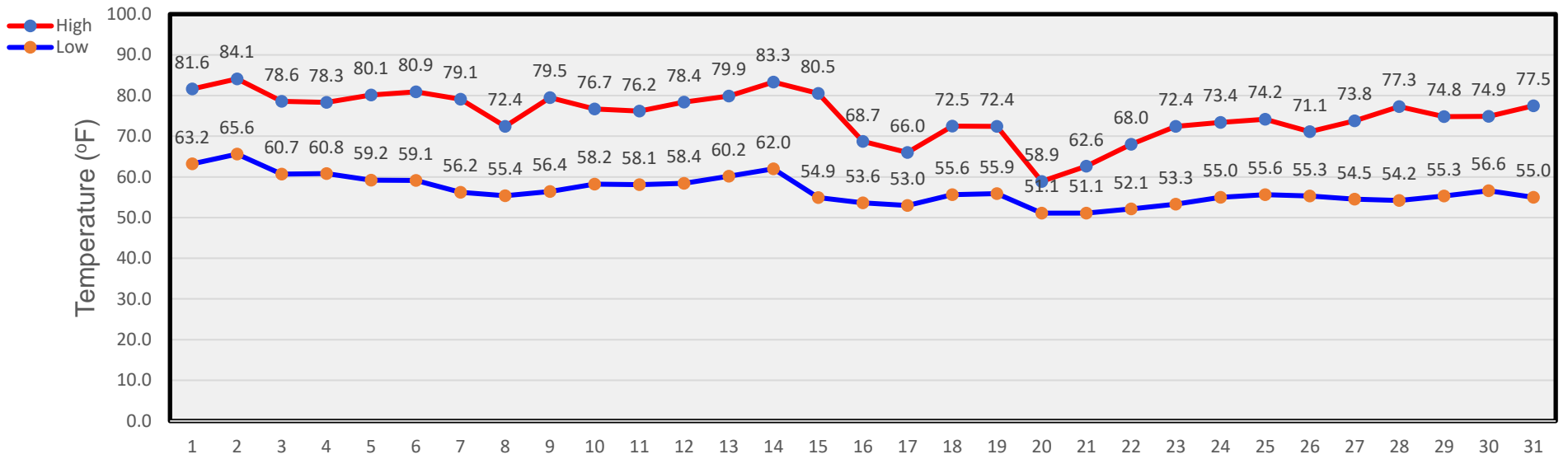
July Temperatures



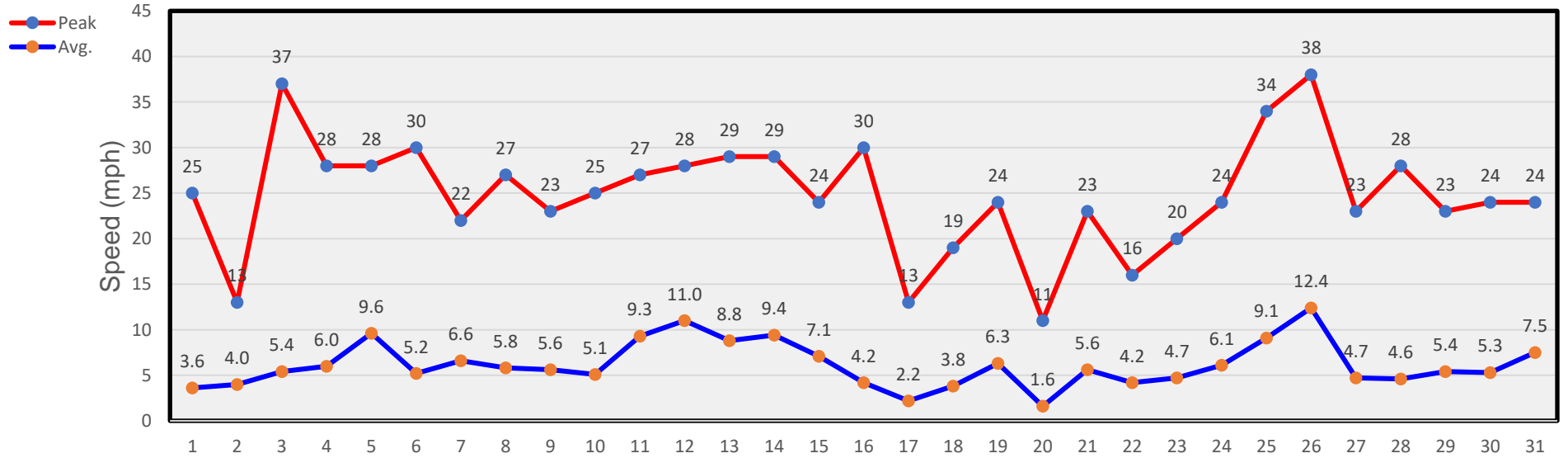
July Winds



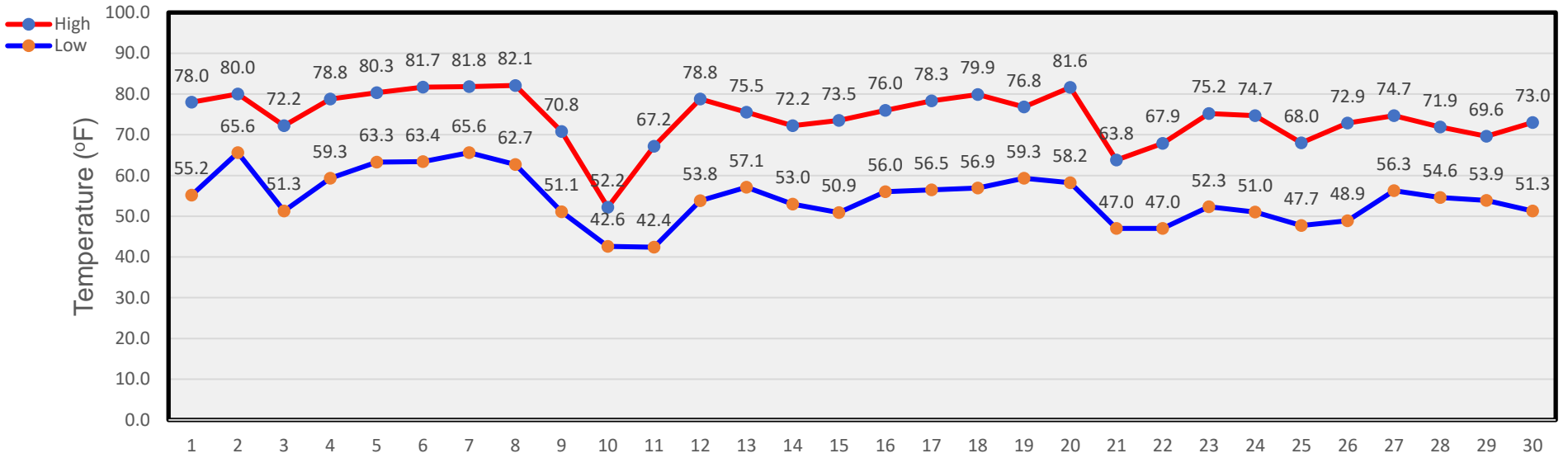
August Temperatures



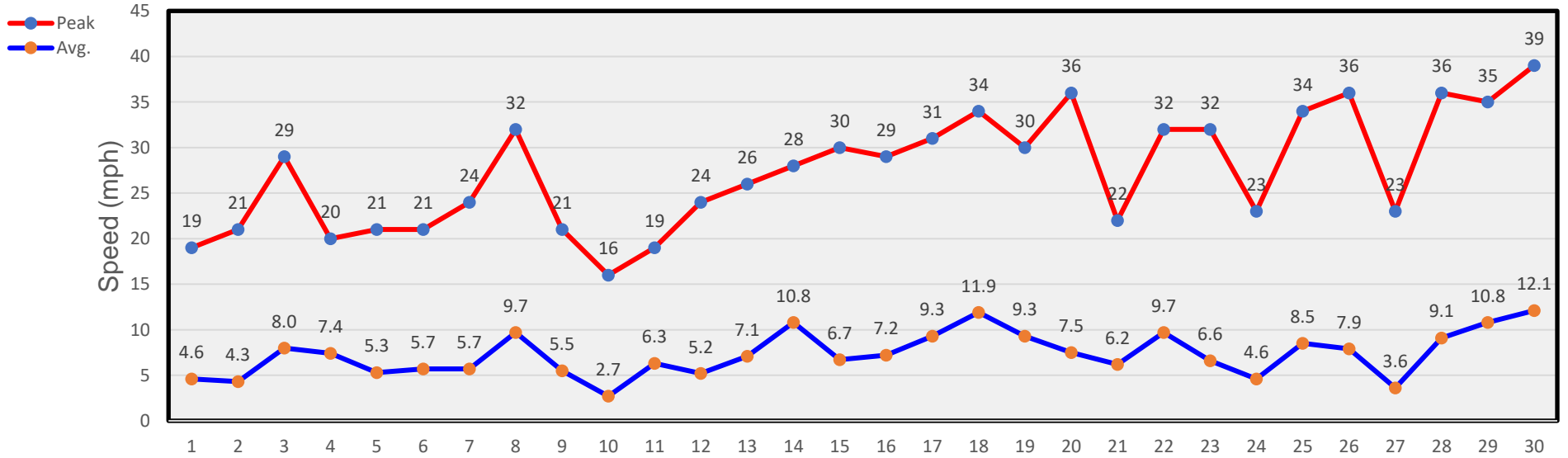
August Winds



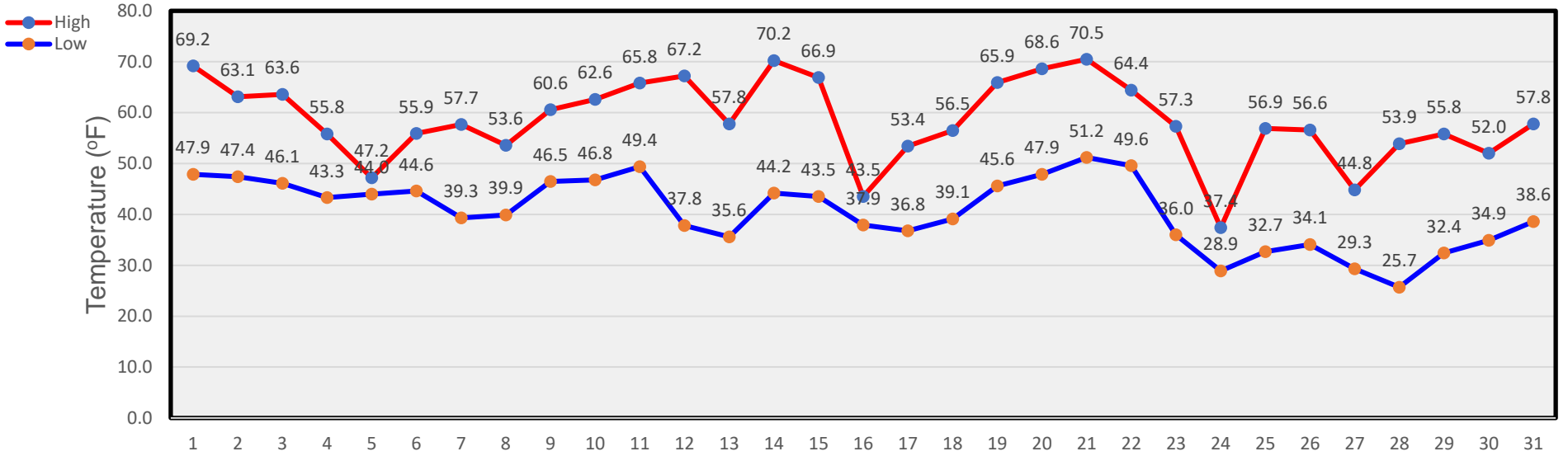
September Temperatures



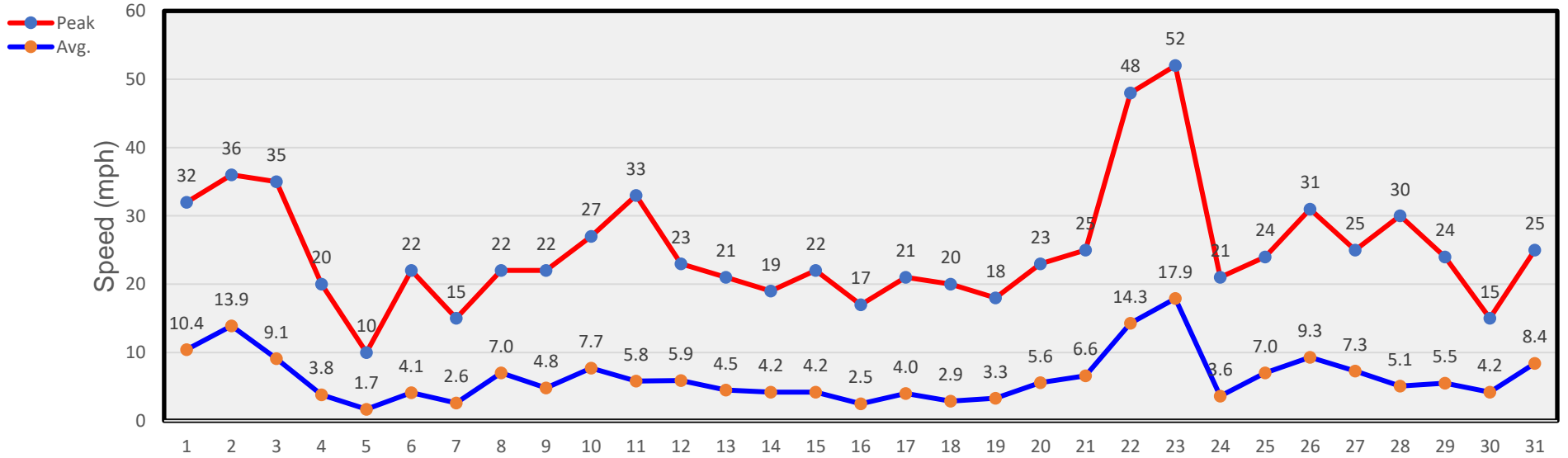
September Winds



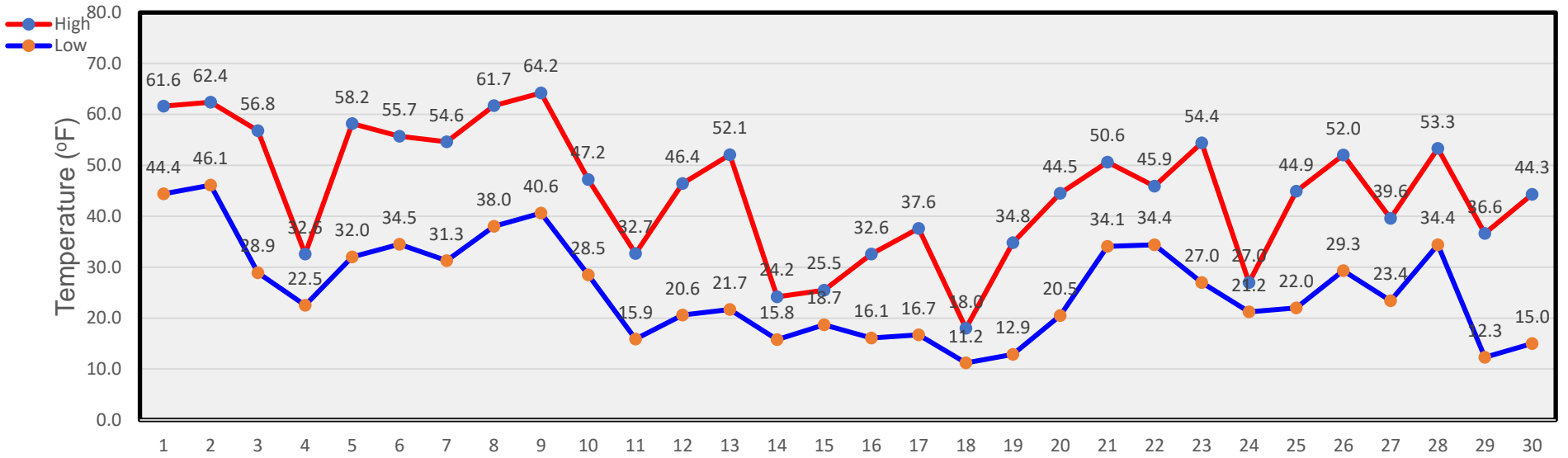
October Temperatures



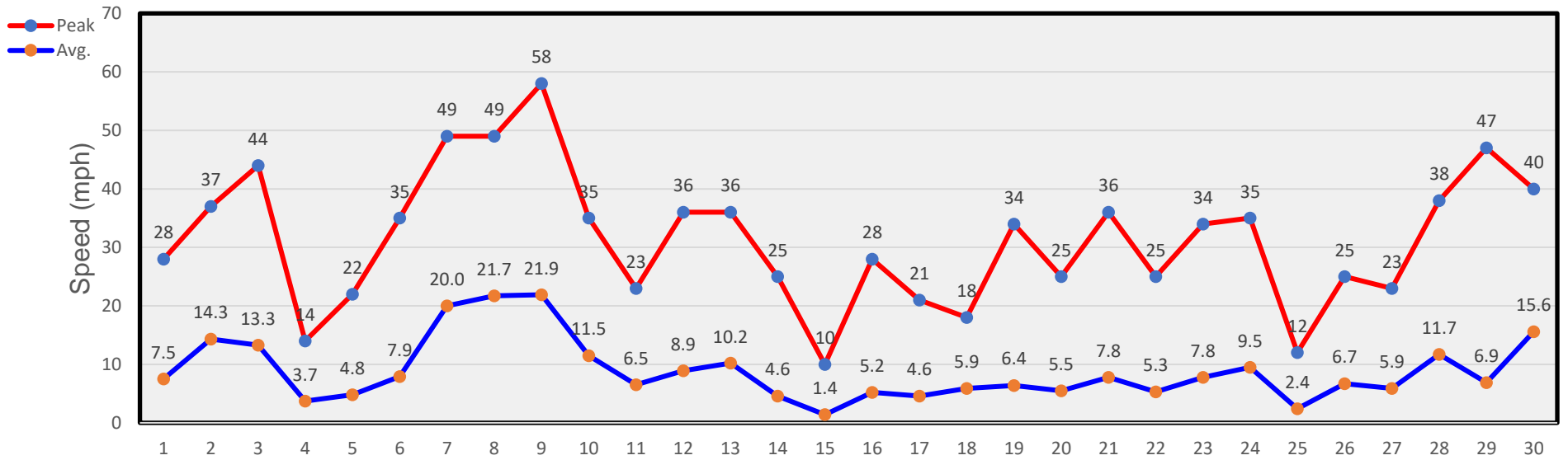
October Winds



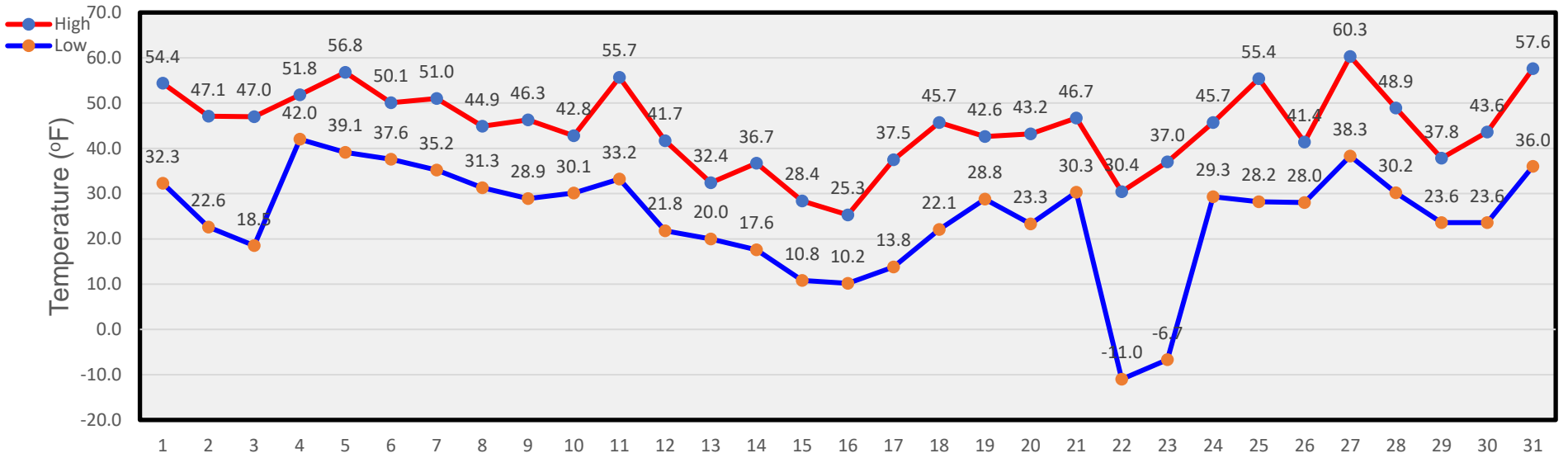
November Temperatures



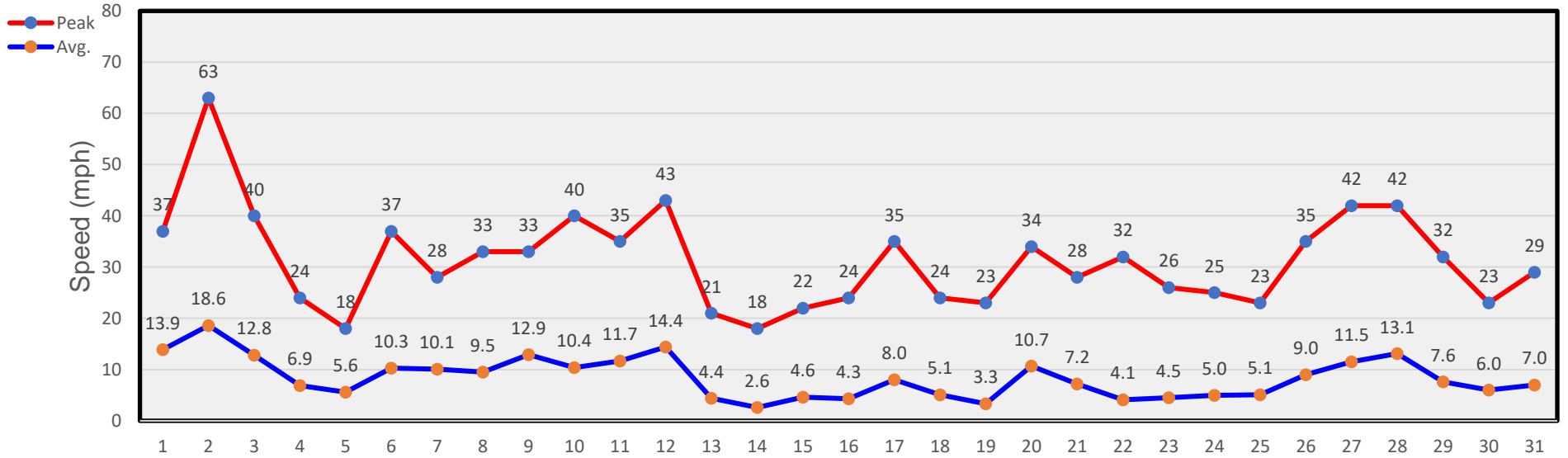
November Winds



December Temperatures



December Winds



Tables

January

Day	Mean Temp.	High Temp.	High Temp. Time	Low Temp.	Low Temp. Time	Heat Degree Days	Cool Degree Days	Precip.	Average Wind Speed	Peak Wind Speed	Peak Wind Time	Wind Dominant Direction
1	6.0	10.9	00:15	2.3	18:45	59.0		.55	4.8	22	15:15	N
2	26.1	38.7	14:45	9.3	00:15	38.9			5.4	32	23:45	S
3	40.1	53.1	13:15	26.4	01:45	24.9			10.2	31	00:15	S
4	42.8	51.0	11:15	36.0	20:45	22.2			9.2	35	13:00	NW
5	36.1	50.7	14:15	15.7	00:00	28.9			7.6	33	15:00	NW
6	32.3	45.3	14:15	12.3	02:00	32.7			6.5	28	16:45	SSW
7	48.4	60.3	14:00	38.6	00:15	16.6			7.7	30	14:15	WSW
8	41.4	51.0	11:30	27.1	23:00	23.6			9.4	48	03:15	WNW
9	28.5	34.3	14:45	24.9	06:15	36.5		.01	6.6	26	14:15	S
10	36.7	47.8	13:15	27.3	00:15	28.3			6.7	30	20:30	S
11	41.9	53.0	12:30	30.9	00:15	23.1			5.6	23	14:15	ENE
12	46.7	55.3	12:00	37.5	00:30	18.3			3.8	21	20:00	SSW
13	47.6	56.5	15:00	41.4	23:45	17.4			7.3	35	20:45	SSW
14	34.2	49.8	04:00	16.4	23:45	30.8			9.8	35	09:30	NE
15	27.4	41.6	16:45	13.7	06:45	37.6		.2	6.1	28	04:45	NE
16	44.0	51.7	15:45	33.9	00:00	21.0			3.7	19	00:00	NW
17	42.6	57.7	14:00	29.7	05:15	22.4			8.3	41	03:15	S
18	44.3	53.2	12:00	29.1	23:45	20.7			4.9	25	21:45	ENE
19	21.0	29.6	00:15	14.0	22:45	44.0			3.4	16	03:00	SSW
20	22.4	35.2	14:00	14.5	00:15	42.6			5.1	23	16:45	SSW
21	32.9	44.8	11:30	23.9	00:15	32.1			6.6	31	10:00	NE
22	28.2	36.7	15:15	23.4	08:30	36.8		.13	5.5	20	13:30	S
23	33.4	43.5	15:00	24.6	00:30	31.6			7.5	31	18:30	S
24	34.9	39.3	16:45	27.4	00:00	30.1			6.2	34	23:15	ENE
25	22.1	30.3	11:00	15.4	23:15	42.9			13.3	42	07:00	S
26	23.5	39.6	14:45	13.8	05:45	41.5		.1	7.1	30	07:30	SSW
27	20.8	27.1	13:00	14.3	22:30	44.2			4.6	21	14:45	NE
28	29.9	40.6	15:45	14.8	00:30	35.1		.2	5.1	22	21:15	S
29	45.5	56.0	14:45	34.1	00:15	19.5			4.4	16	15:00	SW
30	42.9	51.9	12:00	37.7	07:15	22.1			4.6	25	13:30	SSE
31	47.6	59.4	13:45	34.1	00:00	17.4			4.5	30	00:00	WSW
--	34.6 ¹	60.3 ³	7 th	2.3 ³	1 st	942.8 ²	0.0 ²	1.19 ²	6.5 ¹	48 ³	8 th	WSW

Footnotes: 1. Average; 2. Sum (total); 3. Max or Min
 Heat Base: 65.0 Cool Base: 65.0
 Method: (High + Low) / 2 (per ¼ hour)

- 1st: 5 ½" of snow – a great way to start the New Year!
- 9th: A light dusting of snow (~1/4")
- 15th: Another 2" of snow; we really need the moisture.
- 20th: A light dusting of snow; not even enough to measure.
- 22nd: 1 ¼" of snow: we're up to 9" for the month.
- 26th: Another inch of snow
- 28th: An additional 2" of snow
- 31st: 12" of snow – above average; mean temperature 1.2° above normal

February

Day	Mean Temp.	High Temp.	High Temp. Time	Low Temp.	Low Temp. Time	Heat Degree Days	Cool Degree Days	Precip.	Average Wind Speed	Peak Wind Speed	Peak Wind Time	Wind Dominant Direction
1	26.2	37.2	13:45	19.3	08:15	38.8			5.7	28	15:30	SSW
2	5.9	20.0	00:15	-3.3	00:00	59.1		0.5	3.9	15	15:45	N
3	6.7	16.7	13:30	-4.0	03:00	58.3			2.0	11	15:00-	N
4	20.8	34.6	14:15	9.6	03:00	44.2			6.7	29	20:15	S
5	37.1	50.1	12:00	25.3	00:15	27.9			6.6	27	14:00	ENE
6	22.7	27.4	00:15	19.3	09:30	42.3		0.45	6.0	34	09:30	NE
7	33.2	46.9	15:45	20.2	02:00	31.8			5.5	25	19:15	S
8	39.4	50.6	11:00	29.8	00:00	25.6			6.0	35	11:45	N
9	38.2	45.9	13:00	29.8	00:15	26.8			5.9	24	18:15	S
10	36.8	48.0	14:30	23.2	05:15	28.2			6.8	22	11:00	SSW
11	32.8	43.7	08:15	18.5	22:30	32.2			7.3	37	08:30	NE
12	23.7	34.4	22:15	13.0	07:15	41.3		0.3	6.3	21	09:45	S
13	37.2	47.4	15:30	27.0	07:00	27.8			7.0	30	08:45	S
14	42.4	48.5	12:45	36.8	21:30	22.6			11.8	31	09:30	SSW
15	46.3	57.3	14:00	37.7	02:15	18.7			12.5	34	06:00	WSW
16	36.8	47.7	14:15	16.7	00:00	28.2			12.2	38	10:00	W
17	17.6	30.4	15:15	8.3	06:00	47.4		0.2	10.0	38	19:15	NE
18	35.4	46.9	16:15	22.6	00:15	29.6			4.7	24	14:00	SW
19	38.5	54.7	15:45	27.3	02:30	26.5			9.3	36	11:15	SSW
20	46.3	57.0	14:45	39.4	03:15	18.7			9.2	34	17:00	SW
21	38.4	50.1	15:15	9.1	23:15	26.6			12.1	39	13:15	W
22	12.1	29.3	01:30	0.2	23:15	52.9			5.3	29	01:30	NNW
23	7.6	19.7	14:30	-3.1	06:45	57.4			8.4	26	07:45	S
24	18.7	31.8	14:45	3.7	03:45	46.3			10.0	37	03:45	NW
25	21.2	36.1	14:45	9.5	07:00	43.8			6.4	37	00:45	SSW
26	22.9	35.0	13:45	10.7	06:45	42.1			4.3	21	15:45	ENE
27	38.0	54.4	15:30	21.3	03:15	27.0			7.2	25	20:15	S
28	44.3	53.8	16:00	33.4	06:15	20.7			5.1	21	00:15	NE
--	29.5 ¹	57.3 ³	15 th	-4.0 ³	3 rd	992.8 ²	0.0 ²	1.45 ²	7.3 ¹	39 ³	21 st	SSW

Footnotes: 1. Average; 2. Sum (total); 3. Max or Min
 Heat Base: 65.0 Cool Base: 65.0
 Method: (High + Low) / 2 (per ¼ hour)

- 2nd: 5" of very light snow last night; goo for the trees and the water supply.
- 6th: Another 4 ½" of snow; don't think the mountains got any.
- 12th: 3" of snow.
- 17th: About 2" of fairly wet snow.
- 23rd: Snow predicted but got nothing ☹️
- 28th: The average temperature for the month was 4° below normal and the snowfall was above normal – 14-½" total.

March

Day	Mean Temp.	High Temp.	High Temp. Time	Low Temp.	Low Temp. Time	Heat Degree Days	Cool Degree Days	Precip.	Average Wind Speed	Peak Wind Speed	Peak Wind Time	Wind Dominant Direction
1	51.2	62.6	14:00	41.2	00:15	13.8			5.6	27	23:30	SSW
2	52.3	63.6	15:00	43.3	02:15	12.7			7.2	29	21:15	S
3	52.9	62.8	11:15	44.9	23:45	12.1			11.1	33	12:45	SSW
4	48.2	58.3	13:45	35.9	00:00	16.8			14.0	52	18:45	SW
5	36.8	46.9	14:30	21.6	00:00	28.2			13.1	42	6:15	WNW
6	17.1	21.7	00:15	10.3	00:00	47.9			3.5	15	22:45	N
7	16.5	26.2	16:45	8.3	06:15	48.5		0.25	6.5	29	19:15	S
8	22.7	29.8	16:00	15.2	07:00	42.3			6.4	34	23:30	ENE
9	23.1	37.6	11:15	13.2	23:45	41.9			9.2	40	04:30	S
10	8.8	16.1	13:30	3.3	06:30	56.2			1.4	10	00:15	NNW
11	17.5	27.3	14:45	5.6	02:30	47.5		0.40	4.4	21	17:45	S
12	40.6	54.2	16:15	22.3	01:15	24.4			3.5	17	13:00	SW
13	47.2	57.6	14:45	37.9	07:00	17.1			8.4	32	17:30	W
14	36.4	46.3	17:00	26.6	06:30	28.6		0.10	7.8	35	06:00	NE
15	46.5	58.9	17:15	32.1	05:30	21.3			10.4	28	08:00	S
16	47.4	55.9	16:00	39.1	00:00	17.6			6.8	27	16:00	SW
17	27.1	39.4	00:45	21.6	23:45	37.9		0.72	9.2	44	14:45	NE
18	30.9	44.1	17:45	18.5	06:15	34.1			3.7	17	21:00	SSW
19	41.9	51.8	16:00	32.5	05:00	23.1			7.8	29	17:30	SW
20	46.1	57.0	15:00	35.6	07:45	18.9			14.9	34	11:45	SSW
21	30.1	46.4	00:30	21.9	20:15	34.9		.20	12.6	38	13:45	NE
22	23.6	30.8	16:30	17.9	07:15	41.4		.05	11.9	39	10:30	NE
23	30.0	38.6	17:00	20.1	04:00	35.0			7.5	41	12:45	NE
24	44.4	56.9	16:15	29.5	02:15	20.6			4.8	24	15:00	NE
25	48.4	60.6	16:45	42.7	03:45	16.6			5.8	31	19:45	SSW
26	57.0	68.9	16:30	42.6	01:15	8.3	0.3		5.8	26	18:15	WNW
27	58.7	69.9	14:45	49.2	00:00	6.6	0.2		7.4	33	23:15	S
28	55.6	63.6	12:00	46.7	01:30	9.4			11.3	32	00:30	WSW
29	44.6	53.5	15:00	28.5	00:00	20.4			12.6	48	09:30	WNW
30	25.7	29.0	17:15	21.5	07:00	39.3		.44	4.8	27	00:15	N
31	37.1	48.7	15:00	22.1	01:15	27.9			6.8	31	21:15	S
--	37.5 ¹	69.9 ³	27 th	3.3 ³	10 th	851.3 ²	0.5 ²	2.16 ²	7.9 ¹	52 ³	4 th	SSW

Footnotes: 1. Average; 2. Sum (total); 3. Max or Min
 Heat Base: 65.0 Cool Base: 65.0
 Method: (High + Low) / 2 (per ¼ hour)

- 7th: We got 2 ½" of snow last night.
- 11th: Another 4" of snow overnight.
- 14th: A surprise 1" of snow overnight; there was only a 20% chance.
- 21st: A disappointing 2" of snow since the forecast called for 8"-14". Oh, well ...
- 22nd: A surprise ½" of snow last night; I thought it was done.
- 30th: .14" of rain and 3" of snow last night.
- 31st: We ended the month with 20" of snow and 0.16" of rain – well above average for the month.

April

Day	Mean Temp.	High Temp.	High Temp. Time	Low Temp.	Low Temp. Time	Heat Degree Days	Cool Degree Days	Precip.	Average Wind Speed	Peak Wind Speed	Peak Wind Time	Wind Dominant Direction
1	39.5	47.2	17:30	35.6	02:15	25.5			8.3	27	10:15	SSW
2	50.4	63.3	15:45	34.6	03:15	14.6			10.4	34	16:15	WNW
3	47.1	55.1	14:45	31.7	00:00	17.9			5.9	21	18:00	N
4	43.2	56.5	17:15	31.1	01:00	21.8			10.5	36	10:45	SW
5	52.4	63.7	15:30	27.8	00:00	12.6			10.3	46	16:15	NW
6	32.2	43.1	16:30	23.5	05:30	32.8			6.1	23	17:00	ENE
7	34.9	45.8	15:15	26.1	06:45	30.1			4.5	23	12:15	N
8	43.9	60.2	17:15	28.7	06:45	21.1			7.1	36	22:45	NNW
9	56.0	67.1	17:00	41.9	00:30	9.1	0.1		8.9	36	17:00	WSW
10	50.6	58.5	16:00	31.1	00:00	14.4			13.7	47	11:30	WNW
11	44.4	59.6	16:45	28.9	01:00	20.6			16.8	52	14:15	WSW
12	47.9	55.5	13:00	33.0	00:00	17.1			22.5	66	12:125	WSW
13	29.3	38.2	17:00	19.3	04:00	35.7			10.6	44	18:15	WNW
14	42.4	54.5	15:15	29.4	05:30	22.6			9.9	38	15:30	WNW
15	52.0	63.1	15:45	35.3	00:00	13.0			10.8	46	11:15	WNW
16	40.7	56.4	16:15	24.4	05:30	24.3			9.0	38	18:45	S
17	53.4	67.2	16:00	39.1	00:45	11.7	0.1		9.0	38	00:15	NW
18	46.2	55.9	15:45	36.5	05:45	18.8			14.0	57	18:00	SSW
19	52.0	68.8	15:45	38.5	07:00	13.2	0.2		20.9	63	01:15	S
20	60.7	71.3	14:45	49.6	07:00	5.4	1.1		10.9	44	02:45	WNW
21	59.5	72.8	14:45	40.9	06:45	7.3	1.7		9.1	33	13:00	WSW
22	58.5	70.1	13:00	36.9	23:30	7.5	1.0		21.9	70	15:00	SW
23	42.8	51.0	15:30	37.0	06:30	22.2			15.1	49	03:15	WNW
24	38.1	49.2	13:15	31.4	00:00	26.9			5.3	29	10:30	ENE
25	34.5	46.1	17:45	25.2	06:15	30.5		1.20	5.7	32	00:00	SSW
26	45.2	61.3	17:45	31.9	06:00	19.8			21.3	50	07:45	S
27	53.7	65.2	18:30	42.8	05:30	11.3			10.4	42	00:30	S
28	60.1	69.8	16:00	50.2	06:15	5.6	0.7		7.0	31	17:00	SW
29	55.0	65.6	16:45	42.4	00:00	10.0			12.5	44	14:15	WNW
30	48.7	60.9	16:45	36.4	06:00	16.3			10.7	43	1930	S
--	47.2 ¹	72.8 ³	21 st	19.3 ³	13 th	539.7 ²	4.9 ²	1.20 ²	11.5 ¹	70 ³	22 nd	WNW

Footnotes: 1. Average; 2. Sum (total); 3. Max or Min
 Heat Base: 65.0 Cool Base: 65.0
 Method: (High + Low) / 2 (per ¼ hour)

- 22nd: 70mph gust; not good as dry as it is.
- 25th: 12" of unexpected wet snow; 24 hours ago, the Weather Service predicted we'd get 1"
- 30th: We ended the month with above average snowfall, but below average precipitation. That just means we normally receive some rain in April.

May

Day	Mean Temp.	High Temp.	High Temp. Time	Low Temp.	Low Temp. Time	Heat Degree Days	Cool Degree Days	Precip.	Average Wind Speed	Peak Wind Speed	Peak Wind Time	Wind Dominant Direction
1	53.5	65.7	18:45	41.1	06:15	11.5			15.7	58	16:15	SSW
2	48.3	56.7	00:15	31.6	23:30	16.7			9.4	33	11:15	ENE
3	48.9	63.2	16:30	31.8	00:15	16.1			17.4	53	20:30	SSW
4	45.2	54.2	09:45	31.1	23:30	19.8			8.6	27	00:15	NE
5	47.1	64.9	18:00	30.9	03:45	17.9		.04	4.4	25	14:45	NNW
6	62.9	77.8	16:15	46.0	04:00	5.4	3.3		7.4	25	15:30	WNW
7	69.1	78.2	16:00	61.1	04:15	0.8	4.9		11.1	35	15:45	W
8	62.5	75.5	17:00	41.2	06:15	5.2	2.7		14.2	47	17:30	WSW
9	64.3	74.0	15:15	55.1	06:15	3.0	2.3		18.7	53	10:15	W
10	65.3	74.0	14:15	55.5	05:45	2.6	2.8		11.7	36	11:45	SW
11	64.7	74.2	13:30	50.7	06:45	3.5	3.3		17.3	46	11:30	SW
12	61.4	69.2	14:45	50.5	23:30	4.3	0.7		15.2	48	13:00	WSW
13	58.8	72.3	16:30	47.8	06:45	7.3	1.1		8.7	31	10:15	WNW
14	64.2	76.4	17:30	52.3	06:15	3.9	3.1		5.0	24	14:00	NW
15	65.3	73.1	17:30	57.3	00:00	1.9	2.2		7.2	28	10:15	ENE
16	58.7	72.6	17:15	48.7	06:45	7.2	0.9	0.2	14.3	43	19:30	SSW
17	65.5	79.5	16:15	52.1	05:00	4.4	4.9		10.1	38	01:45	S
18	61.6	76.4	17:00	51.3	06:45	5.2	1.7		7.6	30	17:00	NNW
19	66.6	77.0	13:15	55.1	05:00	2.6	4.2		12.7	40	13:30	W
20	45.0	66.8	00:15	30.3	00:00	20.0			7.5	29	16:45	NE
21	29.0	32.8	16:00	25.3	06:00	36.0		0.03	3.9	17	01:00	NW
22	38.9	51.7	18:15	29.2	01:00	26.1		0.01	14.5	60	18:00	SSW
23	45.3	60.4	14:45	38.9	05:30	19.7		0.05	12.1	43	06:15	S
24	35.1	40.7	00:15	31.2	09:15	29.9		0.86	4.4	23	15:30	NE
25	45.2	55.3	16:45	33.2	04:30	19.8		0.01	6.9	28	10:15	ENE
26	61.9	74.6	16:00	48.7	02:30	5.1	2.0		6.7	37	23:00	S
27	67.4	80.2	18:15	54.0	06:30	3.3	5.7		11.6	44	01:15	S
28	69.3	76.0	18:30	61.9	06:30	0.2	4.5		13.1	46	13:15	WSW
29	64.4	73.1	16:00	54.6	00:00	2.4	1.8		13.8	42	12:15	W
30	56.2	66.6	16:45	48.6	05:45	8.8			14.0	56	09:30	WNW
31	54.6	67.5	16:00	42.5	05:30	10.5	0.1		8.0	36	16:30	S
--	56.3 ¹	80.2 ³	27 th	25.3 ³	21 st	321.1 ²	52.2 ²	1.20 ²	10.7 ¹	60 ³	22 nd	W

Footnotes: 1. Average; 2. Sum (total); 3. Max or Min
 Heat Base: 65.0 Cool Base: 65.0
 Method: (High + Low) / 2 (per ¼ hour)

- 11th: Today we had some of the worst smoke I've ever seen; visibility was less than ¼ mile. The winds should take it out overnight.
- 12th: Blue skies today; what a relief!
- 21st: Another 3" of snow
- 24th: 12" of snow! Really late in the year.
- 31st: May finished the month with a mean temperature 0.3° above normal and precipitation 0.58" below normal.

June

Day	Mean Temp.	High Temp.	High Temp. Time	Low Temp.	Low Temp. Time	Heat Degree Days	Cool Degree Days	Precip.	Average Wind Speed	Peak Wind Speed	Peak Wind Time	Wind Dominant Direction
1	40.6	43.6	00:15	37.5	08:45	24.4			3.5	17	00:15	NE
2	49.1	62.1	16:15	42.1	02:45	15.9		0.06	8.2	31	19:15	S
3	56.8	68.7	14:15	50.4	05:45	8.3	0.1	0.01	10.7	37	14:45	SSW
4	64.2	76.5	17:15	48.4	05:30	4.9	4.1		7.5	34	04:00	SSE
5	68.6	77.9	14:30	58.5	04:30	1.0	4.6		4.7	25	13:30	NW
6	65.9	78.1	14:45	51.0	00:00	3.1	4.1		7.4	37	15:45	NE
7	60.8	75.3	15:30	48.7	04:30	5.8	1.6	0.11	10.7	42	17:00	SSW
8	57.4	71.6	16:30	45.3	08:15	8.5	0.9	0.14	9.8	40	22:00	S
9	62.7	76.9	12:00	52.6	06:15	4.4	2.1	0.03	11.0	31	05:15	S
10	73.8	85.5	13:30	59.9	01:15	0.6	9.3		6.8	30	22:00	S
11	76.9	87.2	14:30	64.9	01:15		11.9		6.9	62	20:30	S
12	76.6	84.5	12:15	70.8	04:15		11.6	0.01	6.7	26	19:15	WSW
13	75.5	84.6	16:00	66.8	05:45		10.5		17.1	45	15:00	WSW
14	73.4	84.5	16:00	64.5	06:30		8.4		11.0	32	16:30	SW
15	68.8	84.1	15:30	48.9	07:45	2.5	6.3		11.9	49	17:15	S
16	73.0	85.9	14:45	61.0	06:30	0.7	8.7		10.5	39	20:15	SSW
17	69.9	80.4	14:30	60.9	06:15	0.7	5.6		15.9	42	18:45	SSW
18	67.7	76.7	13:30	59.1	05:45	1.3	4.0		13.9	42	13:30	SSW
19	63.4	77.1	17:45	54.4	23:45	3.9	2.4	0.03	15.4	39	13:30	SSW
20	64.4	79.2	15:15	52.0	06:00	4.1	3.5		16.1	38	01:30	SSW
21	55.1	60.8	00:15	50.3	21:45	9.9			7.6	34	02:00	NE
22	54.6	57.9	23:30	49.1	05:45	10.4		0.18	9.4	33	10:15	SW
23	65.9	78.8	16:00	53.5	02:45	3.2	4.1		11.3	31	09:30	SSW
24	70.1	78.7	14:45	62.4	05:30	0.3	5.4		5.4	28	15:00	SW
25	59.2	65.2	00:15	50.0	22:00	5.8		0.30	4.8	23	06:30	NNW
26	50.9	53.4	16:30	49.7	23:30	14.1		0.76	2.8	15	21:15	SSW
27	52.8	60.4	18:30	46.7	05:00	12.2		0.19	7.3	22	03:15	SSW
28	65.3	75.4	17:00	55.2	06:30	2.9	3.2		6.1	24	00:00	SSW
29	68.5	79.6	16:00	57.7	06:00	1.8	5.3		12.1	31	19:15	S
30	66.5	80.7	14:45	55.6	00:00	2.5	4.0	0.39	5.5	33	16:30	NNE
--	63.9 ¹	87.2 ³	11 th	37.5 ³	1 st	153.2 ²	121.7 ²	2.21 ²	9.3 ¹	62 ³	11 th	SSW

Footnotes: 1. Average; 2. Sum (total); 3. Max or Min
 Heat Base: 65.0 Cool Base: 65.0
 Method: (High + Low) / 2 (per ¼ hour)

- 1st: 43.6 degrees for the high – and this is June!
- 2nd: 1st rain of the month – much needed!
- 8th: ¼" of rain over the last two days.
- 22nd: Another .18" of rain
- 26th: Just over 1" of rain over the last two days. Made for some really slippery roads.
- 30th: Another .39" of rain.
- 30th: June finished the month with a temperature 2.5° **below** normal and precipitation .7" **above** normal.
- 30th: Our 2022 precipitation so far is 1.68" **above** normal. That's a good problem to have!

July

Day	Mean Temp.	High Temp.	High Temp. Time	Low Temp.	Low Temp. Time	Heat Degree Days	Cool Degree Days	Precip.	Average Wind Speed	Peak Wind Speed	Peak Wind Time	Wind Dominant Direction
1	59.6	73.1	12:30	53.0	06:15	6.4	1.0	0.27	3.8	32	15:00	NNW
2	60.2	74.9	13:00	51.2	15:45	2.4	0.8	1.36	5.4	29	14:30	SSW
3	64.4	74.6	12:15	54.8	04:15	2.5	1.9	0.05	12.2	36	15:15	SW
4	66.8	77.6	12:30	58.4	05:15	1.3	3.1		9.9	31	15:30	SSW
5	67.7	77.8	13:30	61.1	22:45	0.6	3.3	0.02	3.9	29	13:45	NW
6	65.0	77.7	12:45	55.0	00:00	2.9	2.9	0.40	4.7	29	18:15	NNW
7	66.3	79.9	18:00	53.7	03:30	3.5	4.8	0.75	5.3	35	20:45	S
8	64.4	77.2	12:45	54.0	06:15	3.7	3.1	0.68	6.3	34	00:00	S
9	69.9	81.5	12:45	59.9	06:15	1.3	6.2		9.0	33	07:00	S
10	74.7	85.1	16:45	64.9	05:45		9.7		8.9	25	00:15	S
11	67.2	78.6	11:15	56.2	00:00	1.7	3.9		5.4	33	13:00	ENE
12	62.7	75.4	13:30	53.0	06:15	4.3	2.0		7.5	31	15:15	SSW
13	70.5	81.7	14:15	55.5	05:15	1.8	7.3		8.0	29	04:15	SSW
14	72.7	83.3	13:30	63.7	05:45	0.1	7.8		7.1	22	13:45	S
15	75.8	84.1	14:30	66.8	04:30		10.8		8.6	28	18:15	SSW
16	71.0	84.4	12:00	59.9	00:00	0.5	6.5	0.14	7.3	38	12:45	S
17	68.5	80.9	13:30	59.3	00:30	0.9	4.4		4.7	21	13:45	SW
18	73.6	84.3	15:00	64.4	05:30		8.6		9.8	30	16:15	S
19	76.8	87.5	13:45	61.3	00:00	0.1	11.9		4.6	30	21:30	ENE
20	67.4	82.0	12:45	58.9	00:00	1.6	4.0	0.21	4.9	29	14:30	ENE
21	69.5	80.7	14:30	59.7	00:15	0.7	5.2		5.7	25	16:15	SW
22	71.5	83.6	17:00	61.0	20:30	0.1	6.7	0.05	5.7	29	18:30	S
23	71.3	86.7	13:30	62.1	00:00	0.2	6.5		8.0	34	01:45	SSW
24	67.3	79.6	14:15	57.9	23:45	1.7	4.0	0.01	5.4	29	15:45	SW
25	62.4	74.6	12:15	55.6	22:45	3.8	1.2	0.67	6.3	24	22:30	SW
26	64.9	79.2	13:00	55.7	01:00	2.5	2.4		6.0	26	05:00	SSW
27	61.6	75.6	13:30	54.2	04:30	4.6	1.2	0.25	5.2	22	14:15	SW
28	57.5	65.6	14:45	53.7	21:15	7.5		0.23	5.4	33	02:30	S
29	57.6	64.9	11:30	53.3	03:15	7.4		0.50	4.6	27	05:00	SSW
30	61.1	73.4	13:15	54.7	01:15	5.0	1.2	0.05	6.1	25	02:45	SSW
31	68.6	78.5	15:45	61.6	06:30	0.5	4.1		3.8	19	16:30	SW
--	67.0 ¹	87.5 ³	19 th	51.2 ³	2 nd	73.3 ²	137.0 ²	5.67 ²	6.4 ¹	38 ³	16 th	SSW

Footnotes: 1. Average; 2. Sum (total); 3. Max or Min
 Heat Base: 65.0 Cool Base: 65.0
 Method: (High + Low) / 2 (per ¼ hour)

- 31st: The mean temperature for the month was 67°, 2.7° below normal.
- 31st: The precipitation for the month was 5.67", 2.58" above normal; it was the wettest July since we've been keeping Ranch records (2000)!

August

Day	Mean Temp.	High Temp.	High Temp. Time	Low Temp.	Low Temp. Time	Heat Degree Days	Cool Degree Days	Precip.	Average Wind Speed	Peak Wind Speed	Peak Wind Time	Wind Dominant Direction
1	71.8	81.6	15:15	63.2	06:00	0.1	6.9		3.6	25	18:15	SW
2	74.9	84.1	17:00	65.6	04:00		9.9		4.0	13	18:30	NW
3	67.5	78.6	14:15	60.7	15:45	0.8	3.3	0.01	5.4	37	15:30	N
4	67.2	78.3	12:45	60.8	23:30	0.9	3.1		6.0	28	22:15	SSW
5	67.6	80.1	12:00	59.2	01:30	1.4	4.0		9.6	28	12:15	S
6	69.0	80.9	14:00	59.1	16:30	0.3	4.3	0.39	5.2	30	16:00	SW
7	64.7	79.1	12:45	56.2	20:30	2.6	2.3	0.18	6.6	22	14:00	SSW
8	60.6	72.4	16:45	55.4	05:15	5.1	0.7	0.04	5.8	27	23:15	S
9	67.3	79.5	15:30	56.4	01:45	2.0	4.3		5.6	23	19:15	S
10	66.1	76.7	13:45	58.2	05:45	1.6	2.8		5.1	25	16:45	S
11	66.4	76.2	16:00	58.1	06:00	2.0	3.4		9.3	27	00:00	S
12	67.8	78.4	16:30	58.4	05:15	1.5	4.3		11.0	28	01:15	SSW
13	69.4	79.9	16:30	60.2	06:00	1.0	5.4		8.8	29	22:45	S
14	72.1	83.3	15:45	62.0	06:30	0.5	7.6		9.4	29	23:15	S
15	69.5	80.5	16:30	54.9	00:00	1.4	5.9	0.40	7.1	24	00:30	S
16	57.9	68.7	14:00	53.6	02:15	7.4	0.2	1.72	4.2	30	14:45	NE
17	56.9	66.0	14:45	53.0	06:15	8.2		0.38	2.2	13	16:00	N
18	63.8	72.5	15:00	55.6	01:45	3.3	2.1		3.8	19	17:00	ENE
19	63.8	72.4	15:00	55.9	23:45	3.1	1.9		6.3	24	15:15	SSW
20	54.9	58.9	11:15	51.1	20:45	10.1		0.31	1.6	11	11:45	SW
21	56.5	62.6	10:30	51.1	06:30	8.5			5.6	23	14:45	S
22	59.5	68.0	13:45	52.1	02:30	5.7	0.2		4.2	16	14:15	SW
23	61.7	72.4	14:45	53.3	05:45	4.5	1.1		4.7	20	22:30	S
24	63.9	73.4	14:15	55.0	06:00	3.2	2.1		6.1	24	23:15	S
25	64.2	74.2	14:15	55.6	06:30	3.4	2.6		9.1	34	23:30	SSE
26	59.8	71.1	13:30	55.3	06:30	5.8	0.6	0.24	12.4	38	00:30	S
27	64.4	73.8	14:00	54.5	06:15	3.2	2.6		4.7	23	16:15	SSW
28	66.9	77.3	11:45	54.2	20:00	1.8	3.7	0.18	4.6	28	19:00	SW
29	66.9	74.8	15:30	55.3	01:30	1.5	3.4		5.4	23	17:30	ENE
30	64.8	74.9	14:30	56.6	05:00	3.0	2.9		5.3	24	22:30	ENE
31	64.8	77.5	15:15	55.0	23:15	3.3	3.1	0.08	7.5	24	18:15	SSW
--	64.9 ¹	84.1 ³	2 nd	51.1 ³	20 th	97.2 ²	94.7 ²	3.93 ²	6.1 ¹	38 ³	26 th	S

Footnotes: 1. Average; 2. Sum (total); 3. Max or Min
 Heat Base: 65.0 Cool Base: 65.0
 Method: (High + Low) / 2 (per ¼ hour)

- 31st: Mean temp for the month was 64.9°, 2.8° below normal.
- 31st: Precipitation for the month was 3.93", 1.27" above normal!

September

Day	Mean Temp.	High Temp.	High Temp. Time	Low Temp.	Low Temp. Time	Heat Degree Days	Cool Degree Days	Precip.	Average Wind Speed	Peak Wind Speed	Peak Wind Time	Wind Dominant Direction
1	66.7	78.0	14:30-	55.2	01:15	2.9	4.6		4.6	19	16:00	SSW
2	72.2	80.0	13:45	65.6	22:00		7.2	0.02	4.3	21	21:15	E
3	62.8	72.2	16:00	51.3	6:45	4.1	1.9	0.02	8.0	29	00:45	S
4	68.1	78.8	15:45	59.3	06:45	1.5	4.7		7.4	20	15:45	SSW
5	72.3	80.3	14:45	63.3	02:45	0.1	7.4		5.3	21	14:30	ENE
6	72.8	81.7	15:30	63.4	04:00	0.1	7.9		5.7	21	14:15	S
7	73.6	81.8	14:45	65.6	00:00		8.6		5.7	24	22:45	S
8	71.0	82.1	14:30	62.7	06:30	0.3	6.3		9.7	32	21:45	SSE
9	60.9	70.8	14:30	51.1	00:00	4.6	0.5		5.5	21	02:45	NE
10	46.5	52.2	10:15	42.6	22:15	18.5		0.02	2.7	16	20:45	N
11	53.5	67.2	16:45	42.4	01:30	11.6	0.1	0.01	6.3	19	08:45	SSE
12	64.4	78.8	15:15	53.8	02:00	3.9	3.3		5.2	24	23:00	SSW
13	65.3	75.5	14:00	57.1	02:45	2.2	2.4		7.1	26	16:00	SSE
14	60.8	72.2	16:30	53.0	06:15	5.2	1.0	0.02	10.8	28	17:15	SW
15	62.0	73.5	15:00	50.9	06:45	4.6	1.6		6.7	30	17:30	SSW
16	65.5	76.0	15:30	56.0	01:15	2.2	2.8		7.2	29	17:30	WSW
17	67.7	78.3	15:30	56.5	07:15	1.3	4.0		9.3	31	15:00	WSW
18	68.6	79.9	16:00	56.9	03:45	1.3	4.9		11.9	34	22:45	SSW
19	66.1	76.8	13:00	59.3	06:30	1.6	2.7	0.07	9.3	30	02:15	SSE
20	69.0	81.6	13:45	58.2	00:00	1.4	5.5		7.5	36	21:45	SSW
21	58.2	63.8	04:30	47.0	23:30	6.8			6.2	22	14:15	NE
22	55.4	67.9	13:45	47.0	00:30	9.7	0.2	0.31	9.7	32	07:45	SSW
23	63.0	75.2	16:45	52.3	03:30	4.3	2.3		6.6	32	01:00	SSW
24	62.8	74.7	15:00	51.0	05:45	4.2	1.9		4.6	23	22:45	ENE
25	58.0	68.0	15:00	47.7	07:30	7.3	0.3		8.5	34	00:00	SSW
26	60.7	72.9	14:45	48.9	06:30	6.2	1.8		7.9	36	02:15	S
27	63.4	74.7	14:30	56.3	23:00	3.4	1.7		3.6	23	12:15	SW
28	59.2	71.9	12:30	54.6	06:45	6.3	0.5	0.09	9.1	36	15:15	S
29	60.2	69.6	13:15	53.9	02:15	5.3	0.5		10.8	35	16:45	S
30	60.2	73.0	15:00	51.3	04:30	6.0	1.1		12.1	39	20:45	S
--	63.7 ¹	82.1 ³	8 th	42.4 ³	11 th	126.8 ²	87.7 ²	0.56 ²	7.3 ¹	39 ³	30 th	SSW

Footnotes: 1. Average; 2. Sum (total); 3. Max or Min
 Heat Base: 65.0 Cool Base: 65.0
 Method: (High + Low) / 2 (per ¼ hour)

- 30th: Not much rain for the month (.56"), ~40% of the average amount and the lowest month for the year, by far.
- 30th: The month was warmer than usual, averaging almost 2 degrees above normal.

October

Day	Mean Temp.	High Temp.	High Temp. Time	Low Temp.	Low Temp. Time	Heat Degree Days	Cool Degree Days	Precip.	Average Wind Speed	Peak Wind Speed	Peak Wind Time	Wind Dominant Direction
1	56.5	69.2	15:00	47.9	06:30	8.7	0.2		10.4	32	19:00	S
2	52.6	63.1	12:45	47.4	07:15	12.4		0.03	13.9	36	11:00	SW
3	50.8	63.6	12:30	46.1	07:15	14.2		0.10	9.1	35	01:15	SSW
4	47.6	55.8	13:00	43.3	06:45	17.4		0.06	3.8	20	20:15	N
5	45.1	47.2	00:15	44.0	20:15	19.9		0.46	1.7	10	00:45	NW
6	49.1	55.9	16:30	44.6	06:30	15.9		0.01	4.1	22	20:00	S
7	46.7	57.7	12:45	39.3	20:15	18.3			2.6	15	08:15	MW
8	45.0	53.6	15:45	39.9	08:30	20.0		0.03	7.0	22	12:30	SSW
9	52.7	60.6	15:15	46.5	01:45	12.3			4.8	22	12:45	SE
10	53.0	62.6	16:00	46.8	02:00	12.0			7.7	27	21:00	S
11	56.6	65.8	16:00	49.4	02:00	8.4			5.8	33	14:30	NW
12	54.6	67.2	16:45	37.8	00:00	10.6	0.2		5.9	23	21:30	S
13	46.8	57.8	15:00	35.6	02:30	18.2			4.5	21	07:00	NE
14	56.8	70.2	15:00	44.2	01:45	9.0	0.8		4.2	19	17:30	SSW
15	55.5	66.9	12:45	43.5	00:00	9.6			4.2	22	14:45	W
16	40.0	43.5	00:15	37.9	08:15	25.0		0.01	2.5	17	00:45	NNE
17	42.8	53.4	15:30	36.8	05:45	22.2		0.01	4.0	21	11:15	N
18	47.2	56.5	15:45	39.1	07:15	17.8			2.9	20	15:45	N
19	55.2	65.9	16:15	45.6	02:45	9.8			3.3	18	14:00	NNE
20	57.9	68.6	15:15	47.9	02:30	8.1	0.4		5.6	23	19:30	S
21	58.6	70.5	15:45	51.2	23:00	6.9	0.6		6.6	25	16:15	WNW
22	56.5	64.4	15:00	49.6	06:45	8.5			14.3	48	14:45	W
23	49.5	57.3	13:45	36.0	23:30	15.5			17.9	52	17:30	WSW
24	32.8	37.4	00:15	28.9	14:45	32.2		0.02	3.6	21	00:30	NE
25	44.7	56.9	15:30	32.7	01:00	20.3			7.0	24	14:45	S
26	44.5	56.6	15:30	34.1	05:45	20.5			9.3	31	13:15	SW
27	35.7	44.8	00:15	29.3	18:15	29.3			7.3	25	21:45	NNE
28	38.2	53.9	15:45	25.7	07:15	26.8		0.15	5.1	30	22:45	NNW
29	43.6	55.8	13:45	32.4	04:00	21.4			5.5	24	02:00	SSW
30	43.0	52.0	14:15	34.9	05:15	22.0			4.2	15	15:15	N
31	47.0	57.8	13:30	38.6	03:00	18.0			8.4	25	18:30	S
--	48.6 ¹	70.5 ³	21 st	25.7 ³	28 th	511.2 ²	2.2 ²	0.88 ²	6.4 ¹	52 ³	23 rd	SSW

Footnotes: 1. Average; 2. Sum (total); 3. Max or Min
 Heat Base: 65.0 Cool Base: 65.0
 Method: (High + Low) / 2 (per ¼ hour)

- 24th: First snow of the season; nothing will stick, the ground is too warm.
- 28th: 1-1/2" of wet snow; less than forecast. ☹️
- 31st: The month ended a little over 2° below normal. Unfortunately, we're more than 4" below normal for the Fall snowfall.

November

Day	Mean Temp.	High Temp.	High Temp. Time	Low Temp.	Low Temp. Time	Heat Degree Days	Cool Degree Days	Precip.	Average Wind Speed	Peak Wind Speed	Peak Wind Time	Wind Dominant Direction
1	51.7	61.6	14:30	44.4	07:00	13.3			7.5	28	17:30	SSW
2	51.8	62.4	15:15	46.1	05:00	13.2			14.3	37	03:30	WSW
3	45.0	56.8	14:45	28.9	00:00	20.0			13.3	44	15:15	SSW
4	27.6	32.6	17:30	22.5	09:00	37.4		0.10	3.7	14	03:00	NE
5	44.8	58.2	17:15	32.0	00:15	20.2			4.8	22	17:45	SW
6	44.6	55.7	14:45	34.5	23:45	20.4			7.9	35	00:00	S
7	39.7	54.6	14:30	31.3	08:15	25.3			20.0	49	06:15	S
8	49.1	61.7	13:45	38.0	01:15	15.9			21.7	49	20:15	SSW
9	50.8	64.2	13:00	40.6	06:45	14.2			21.9	58	14:30	SW
10	38.3	47.2	13:30	28.5	00:00	26.7			11.5	35	00:15	SSW
11	23.6	32.7	15:30	15.9	06:15	41.4		0.10	6.5	23	11:45	SSW
12	33.6	46.4	13:00	20.6	01:15	31.4			8.9	36	20:45	S
13	38.6	52.1	12:30	21.7	00:00	26.4			10.2	36	22:30	SSW
14	19.4	24.2	14:15	15.8	06:15	45.6		0.10	4.6	25	01:00	N
15	21.4	25.5	12:30	18.7	22:00	43.6		0.45	1.4	10	13:15	NNW
16	23.5	32.6	16:00	16.1	05:15	41.5			5.2	28	20:30	SSW
17	25.1	37.6	13:45	16.7	21:15	39.9			4.6	21	00:30	ENE
18	14.6	18.0	02:00	11.2	22:45	50.4		0.025	5.9	18	13:45	SSW
19	23.0	34.8	14:00	12.9	00:30	42.0			6.4	34	22:15	SSW
20	34.8	44.5	12:45	20.5	01:45	30.2			5.5	25	00:15	S
21	41.5	50.6	12:45	34.1	23:45	23.5			7.8	36	19:45	SW
22	40.1	45.9	14:00	34.4	00:45	24.9			5.3	25	22:00	SSW
23	39.2	54.4	12:15	27.0	00:00	25.8			7.8	34	21:45	ENE
24	23.6	27.0	00:15	21.2	23:30	41.4		1.0	9.5	35	05:45	NE
25	33.8	44.9	15:15	22.0	00:15	31.2			2.4	12	06:15	NNW
26	40.1	52.0	12:45	29.3	04:45	24.9		0.125	6.7	25	13:15	NE
27	31.3	39.6	14:30	23.4	06:00	33.7			5.9	23	15:30	SSW
28	42.5	53.3	13:15	34.4	01:30	22.5			11.7	38	17:15	W
29	22.5	36.6	00:15	12.3	18:00	42.5		0.15	6.9	47	01:00	W
30	28.5	44.3	11:30	15.0	01:30	36.5			15.6	40	01:30	SSW
--	34.8 ¹	64.2 ³	9 th	11.2 ³	18 th	905.9 ²	0.0 ²	2.05 ²	8.8 ¹	58 ³	9 th	SSW

Footnotes: 1. Average; 2. Sum (total); 3. Max or Min
 Heat Base: 65.0 Cool Base: 65.0
 Method: (High + Low) / 2 (per ¼ hour)

- 4th: An inch of snow; well below what was predicted
- 11th: Another inch of snow .. when NO precipitation was forecast!
- 14th: Another 1" of snow, less that predicted.
- 15th: We got 4.5" of snow when there was only a 20% chance in the forecast!
- 18th: It snowed off and on all day, but the total snow was just ¼".
- 24th: !0" of snow – what a surprise!
- 26th: Another 1-1/2" of snow.
- 30th: 20.5" of snow for the month and the coldest November on record – wow!

December

Day	Mean Temp.	High Temp.	High Temp. Time	Low Temp.	Low Temp. Time	Heat Degree Days	Cool Degree Days	Precip.	Average Wind Speed	Peak Wind Speed	Peak Wind Time	Wind Dominant Direction
1	44.8	54.4	13:00	32.3	00:15	20.2			13.9	37	12:15	WSW
2	41.3	47.1	12:30	22.6	23:45	23.7			18.6	63	9:15	WNW
3	31.9	47.0	21:45	18.5	07:15	33.1			12.8	40	05:45	SSW
4	46.1	51.8	15:00	42.0	06:00	18.9			6.9	24	12:15	SSW
5	47.1	56.8	12:30	39.1	23:30	17.9			5.6	18	14:00	SW
6	42.1	50.1	12:15	37.6	06:00	22.9			10.3	37	13:15	SW
7	42.0	51.0	14:15	35.2	00:00	23.0			10.1	28	15:30	SW
8	36.5	44.9	14:30	31.3	07:30	28.5			9.5	33	06:30	W
9	35.8	46.3	15:45	28.9	07:30	29.2			12.9	33	04:15	S
10	35.6	42.8	15:00	30.1	22:45	29.4			10.4	40	19:30	SSW
11	43.9	55.7	13:30	33.2	00:15	21.1			11.7	35	14:30	WSW
12	33.1	41.7	13:15	21.8	00:00	31.9			14.4	43	22:45	S
13	24.6	32.4	14:00	20.0	00:00	40.4			4.4	21	11:30	NW
14	25.7	36.7	14:45	17.6	20:15	39.3			2.6	18	16:15	NW
15	20.1	28.4	13:30	10.8	23:30	44.9			4.6	22	01:30	SSE
16	17.5	25.3	13:15	10.2	07:30	47.5			4.3	24	21:45	ENE
17	26.2	37.5	13:15	13.8	00:45	38.8			8.0	35	20:30	SSE
18	34.4	45.7	13:30	22.1	00:30	30.6			5.1	24	00:15	SSW
19	35.6	42.6	14:00	28.8	00:00	29.4			3.3	23	23:45	ENE
20	31.6	43.2	14:15	23.3	07:00	33.4			10.7	34	01:30	S
21	37.3	46.7	14:00	30.3	00:00	27.7			7.2	28	12:45	NW
22	-5.8	30.4	00:15	-11.0	04:30	70.8			4.1	32	22:30	NNW
23	7.8	37.0	23:15	-6.7	02:15	56.6			4.5	26	00:30	S
24	37.4	45.7	14:15	29.3	00:00	27.6			5.0	25	22:30	ENE
25	40.2	55.4	12:45	28.2	22:30	24.8			5.1	23	01:00	NW
26	34.7	41.4	12:45	28.0	05:45	30.3			9.0	35	18:45	S
27	50.4	60.3	12:30	38.3	00:15	14.6			11.5	42	23:30	WSW
28	41.4	48.9	01:30	30.2	23:45	23.7			13.1	42	00:45	W
29	29.6	37.8	14:30	23.6	00:00	35.4			7.6	32	00:30	WNW
30	33.8	43.6	14:30	23.6	00:15	31.2			6.0	23	01:00	SW
31	46.7	57.6	14:30	36.0	00:15	18.3			7.0	29	17:30	NW
--	33.9 ¹	60.3 ³	27 th	-11.0 ³	22 nd	965.1 ²	0.0 ²	0.00 ²	8.4 ¹	63 ³	2 nd	S

Footnotes: 1. Average; 2. Sum (total); 3. Max or Min
 Heat Base: 65.0 Cool Base: 65.0
 Method: (High + Low) / 2 (per ¼ hour)

- 14th: A light dusting of snow, but not enough to measure
- 16th: Another light dusting of snow
- 31st: NO recorded snow for the month; the mean temperature was about ½ degree above normal.
- 2022: The year's mean temperature came within a tenth of a degree of being the coldest year for the past 20 years!