



# Santa Fe Trail Ranch

Climatological Data  
for

2006

The climatological data in this document represents a compilation of the Weather Stats pages from the original Santa Fe Trail Ranch web site and continuing data collection since moving to the new SFTR web site.

Until April 2012, longtime resident Walt Wolff collected and posted daily weather data. But the wintery weather and work associated with maintaining the beautiful Loma Lobo property caused Joyce and Walt to switch to part-time status. Walt gave Robert L. Scott the weather equipment and Bob posted the weather updates until his equipment failed in January 2018. Since then, the data has come from the StargateCOlorado weather station (same type of equipment that Walt/Bob used) maintained by Ernie Parker / Sharon Sorenson.

The data is broken into two sections: the charts in the first section are a synopsis of the weather on the Ranch. For more detailed data (and an aid to help you sleep!), see the monthly climatological tables in the second section.

#### Notes:

- The StargateCOlorado weather station is at the south end of the Ranch and at a higher elevation than the station maintained by Walt Wolff & Bob Scott. As a result, you will find that, on average, the temperature readings will be slightly lower, and the precipitation readings will be slightly higher than those reported by Bob/Walt's stations.
- The data shown on the various pages starts at a high level and gets more detailed the further down you go.
  - The highest-level charts show the precipitation, snow, temperature, and winds for the entire year.
  - The middle-level charts show the temperature and winds for each month of the year.
  - The lowest-level tables provide all the data collected by the weather station.
  - The snow data has only been collected since 2015 by Ernie / Sharon and does not come from the weather station.
  - What's the definition of "Mean Temperature"? Unlike most weather information, where the "Average Temperature" is just the average of the highest and lowest temperatures of the day, the weather station captures the temperature every 15 minutes, collecting 96 readings per day. The "Mean Temperature" is the average of all 96 readings, giving you a more accurate value.
- Prior to 2022, the times shown in the climatological tables are based on a 12-hour (AM/PM) clock. Starting in 2022, the times listed are based on a 24-hour clock. The data collection program suddenly switched modes.

Enjoy!!

--Ernie Parker

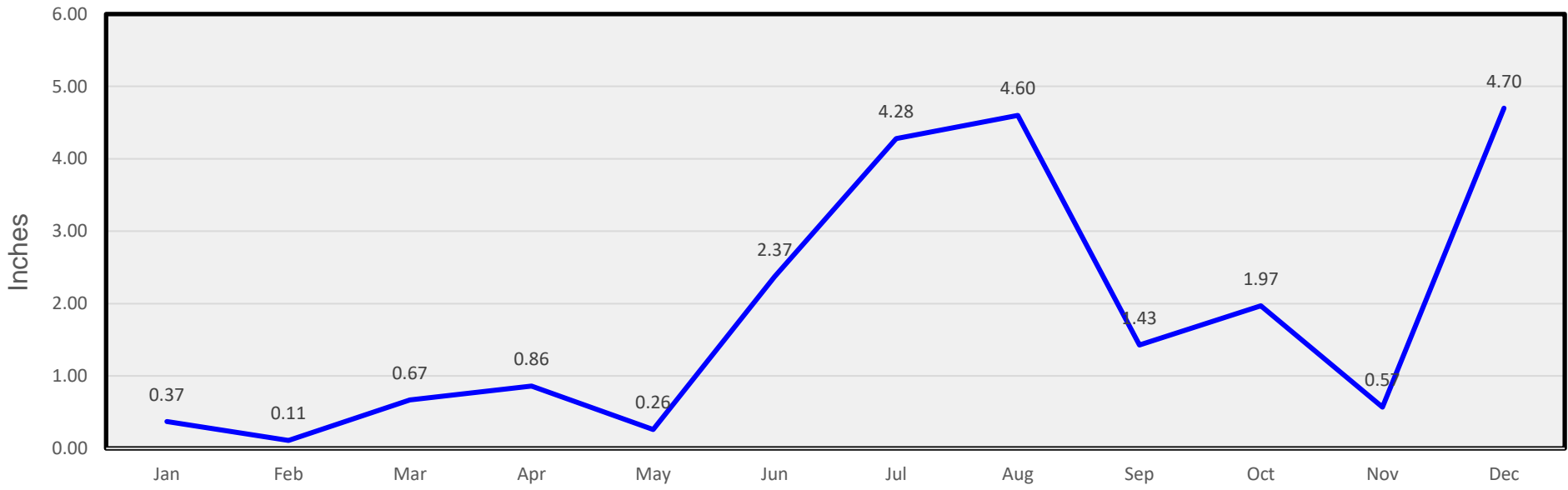
# Contents

Charts .....	5
Monthly Precipitation.....	6
Monthly Snow .....	6
Monthly Temperatures .....	7
Monthly Winds .....	7
January Temperatures.....	8
January Winds .....	8
February Temperatures .....	9
February Winds.....	9
March Temperatures.....	10
March Winds .....	10
April Temperatures .....	11
April Winds.....	11
May Temperatures.....	12
May Winds .....	12
June Temperatures.....	13
June Winds .....	13
July Temperatures .....	14
July Winds.....	14
August Temperatures .....	15
August Winds.....	15
September Temperatures.....	16
September Winds .....	16
October Temperatures.....	17
October Winds .....	17
November Temperatures.....	18
November Winds .....	18
December Temperatures.....	19
December Winds .....	19

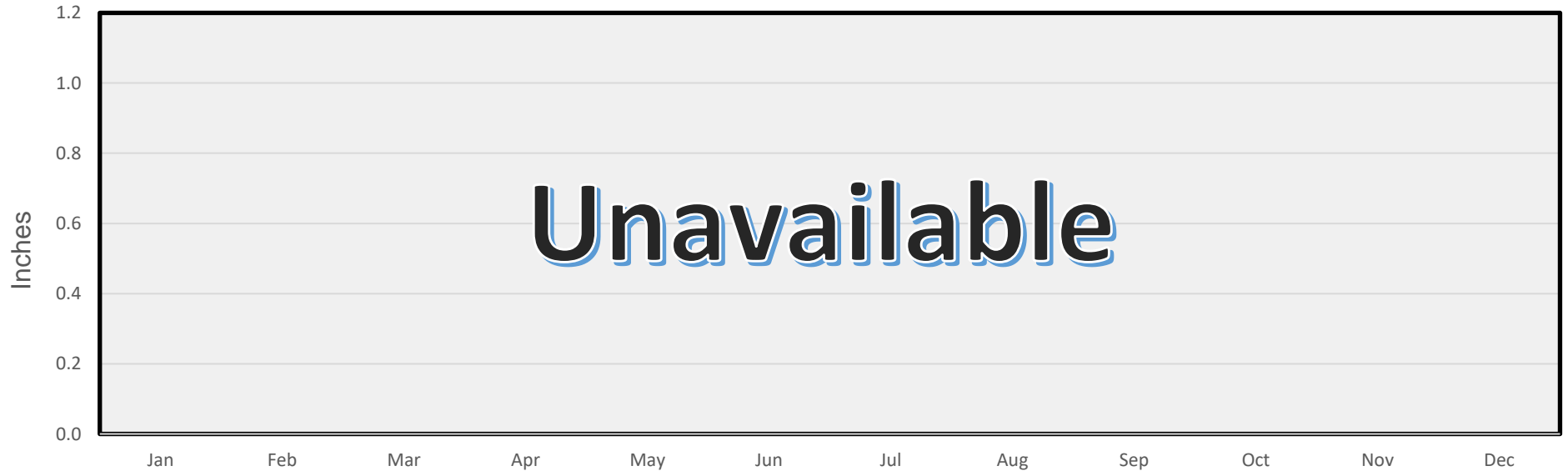
Tables .....	20
January .....	21
February .....	22
March .....	23
April .....	24
May .....	25
June .....	26
July .....	27
August .....	28
September .....	29
October .....	30
November .....	31
December .....	32

# Charts

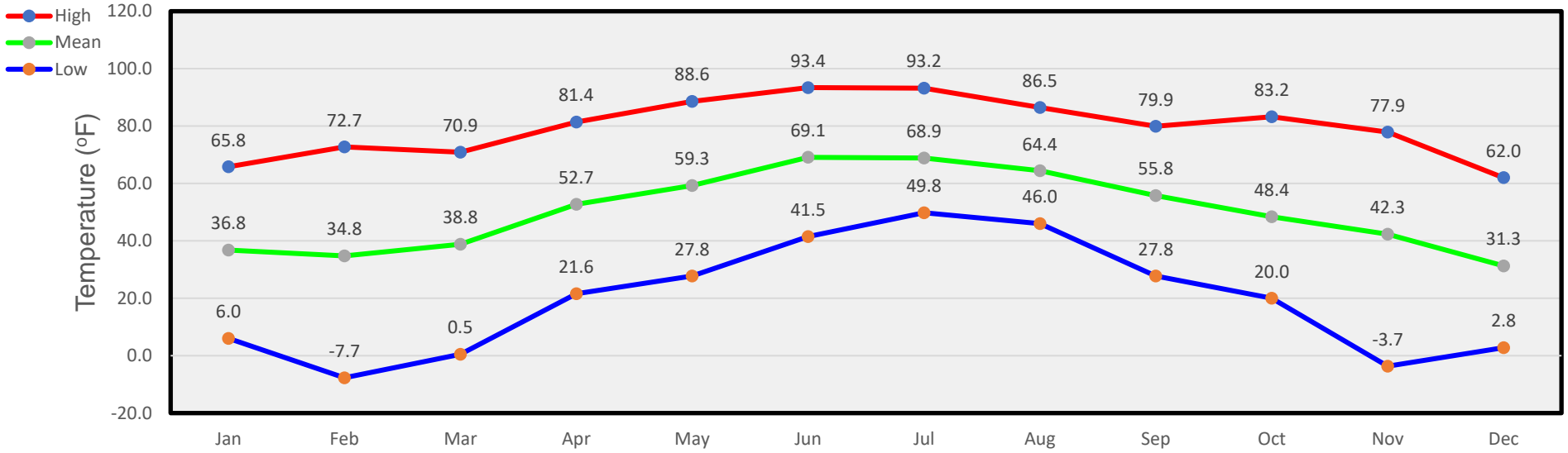
**Monthly Precipitation**



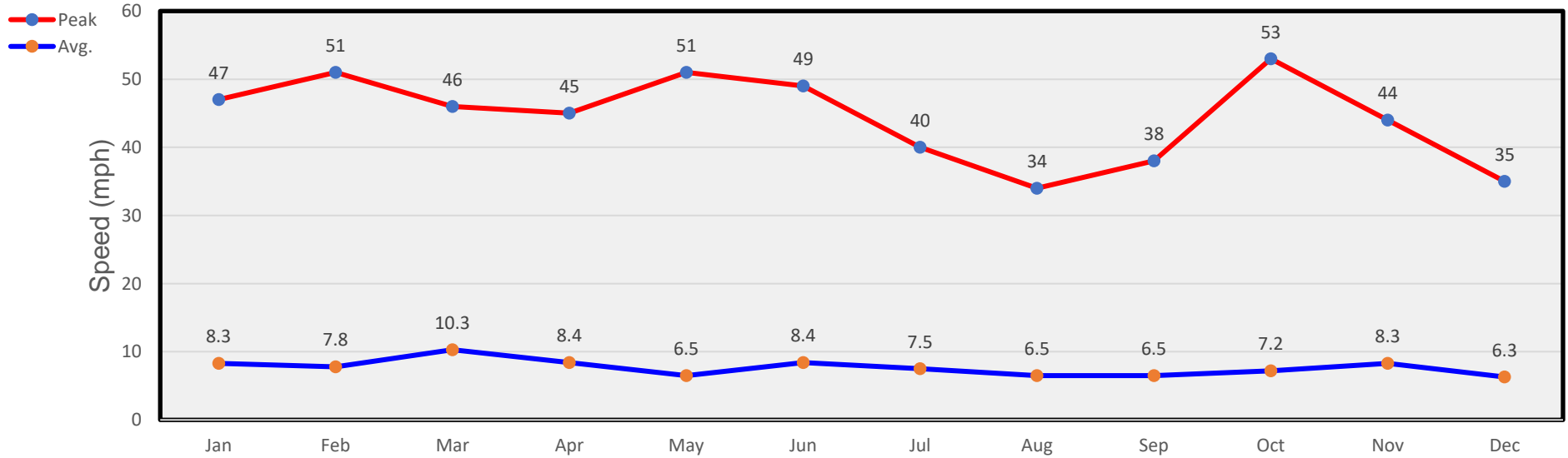
**Monthly Snow**



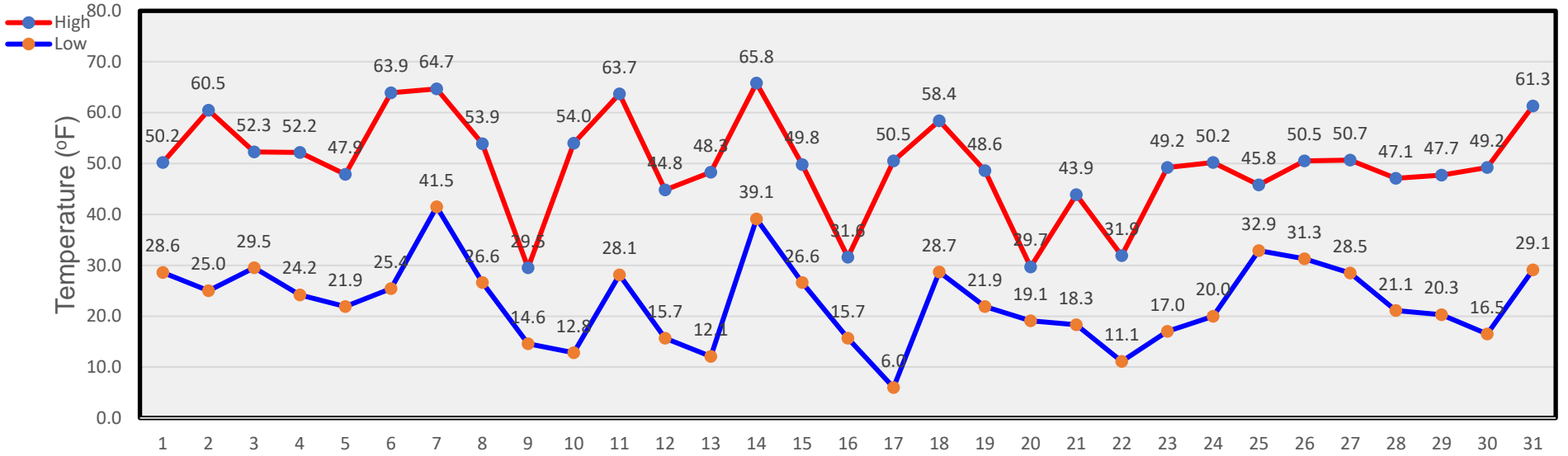
## Monthly Temperatures



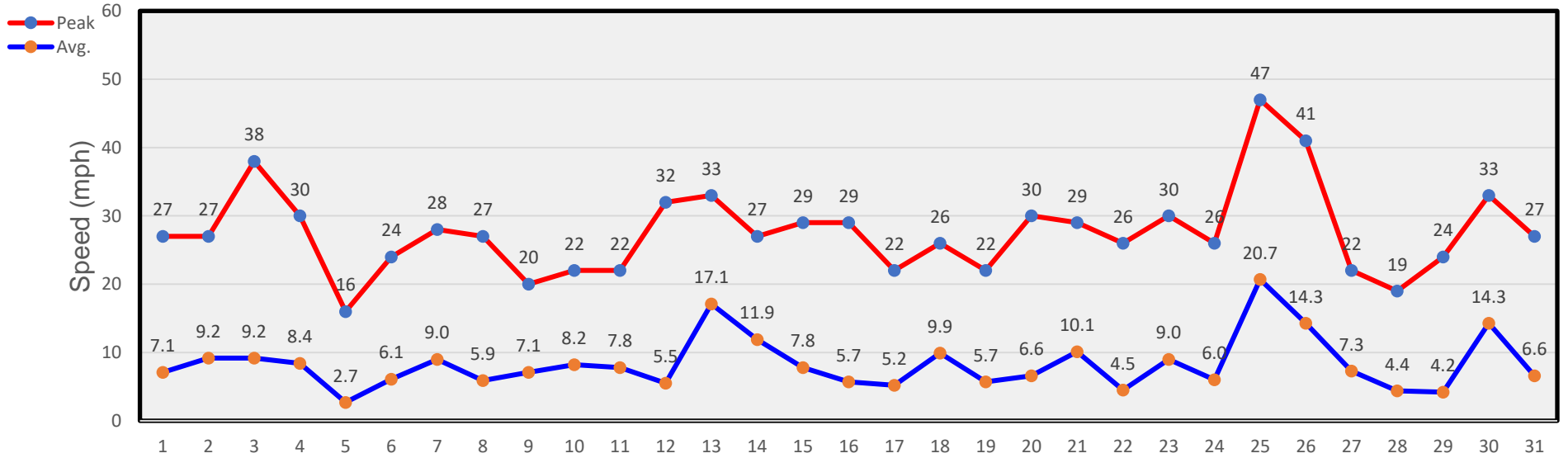
## Monthly Winds



### January Temperatures

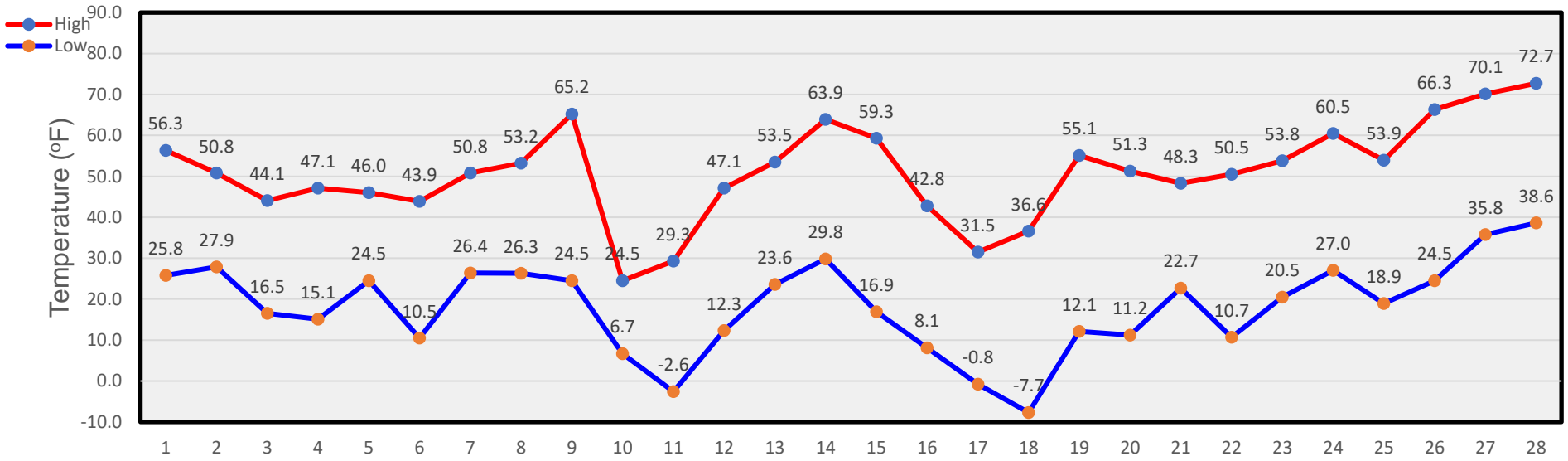


### January Winds

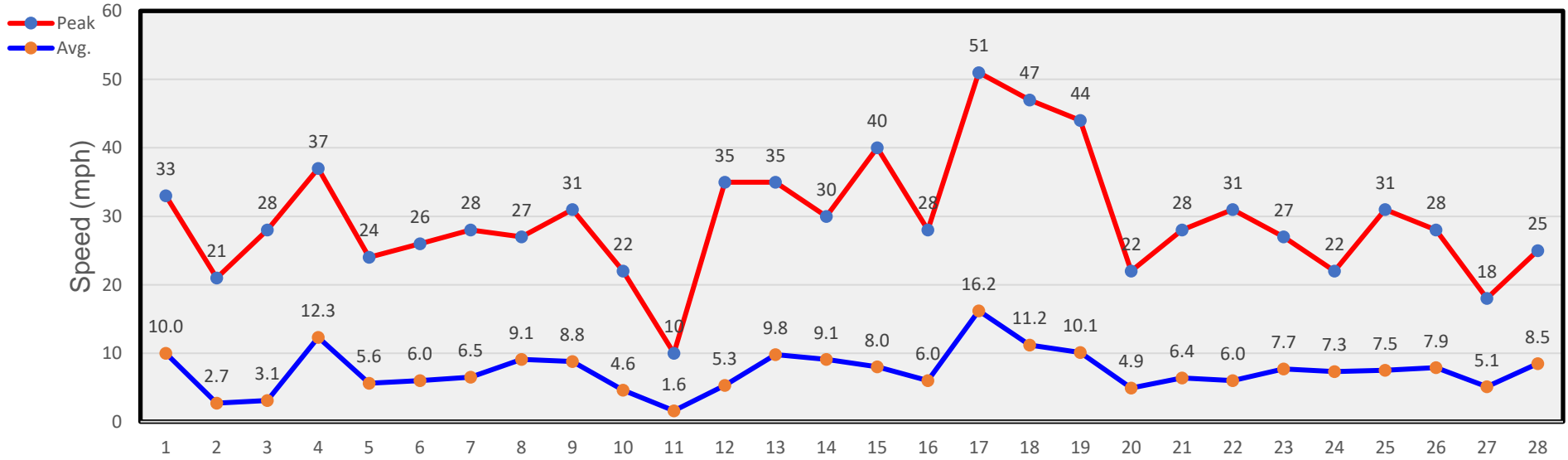




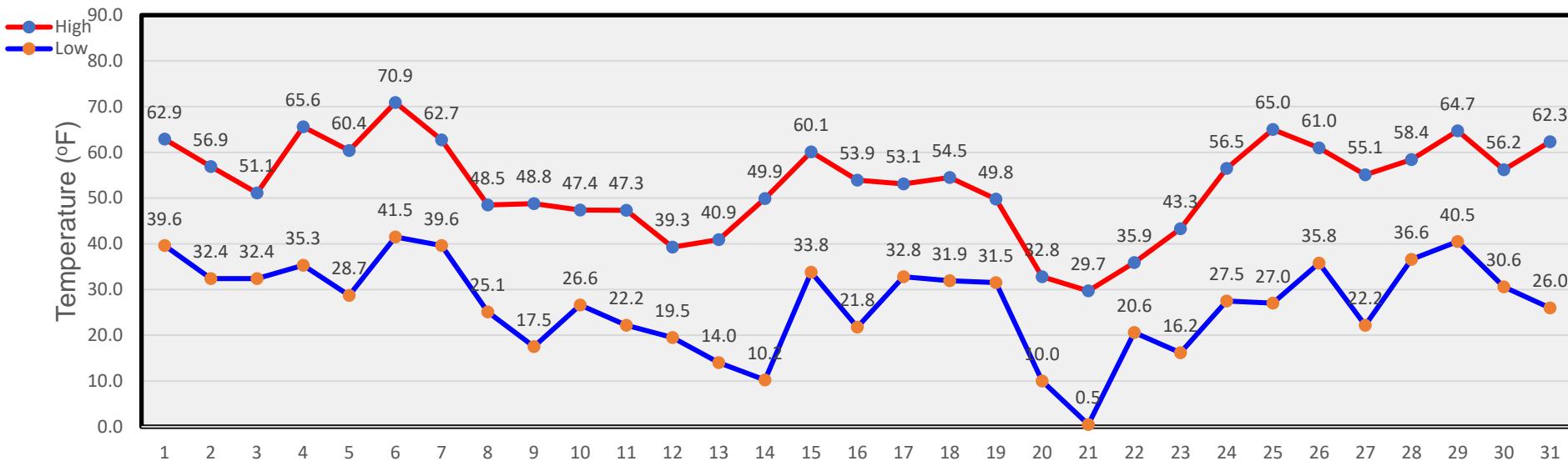
### February Temperatures



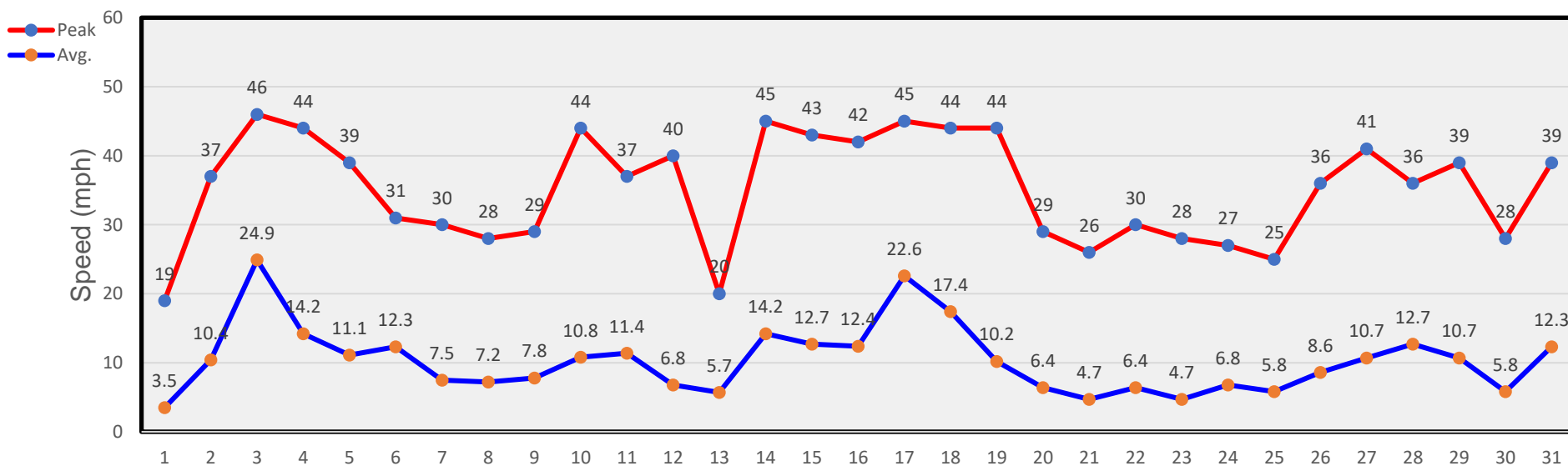
### February Winds



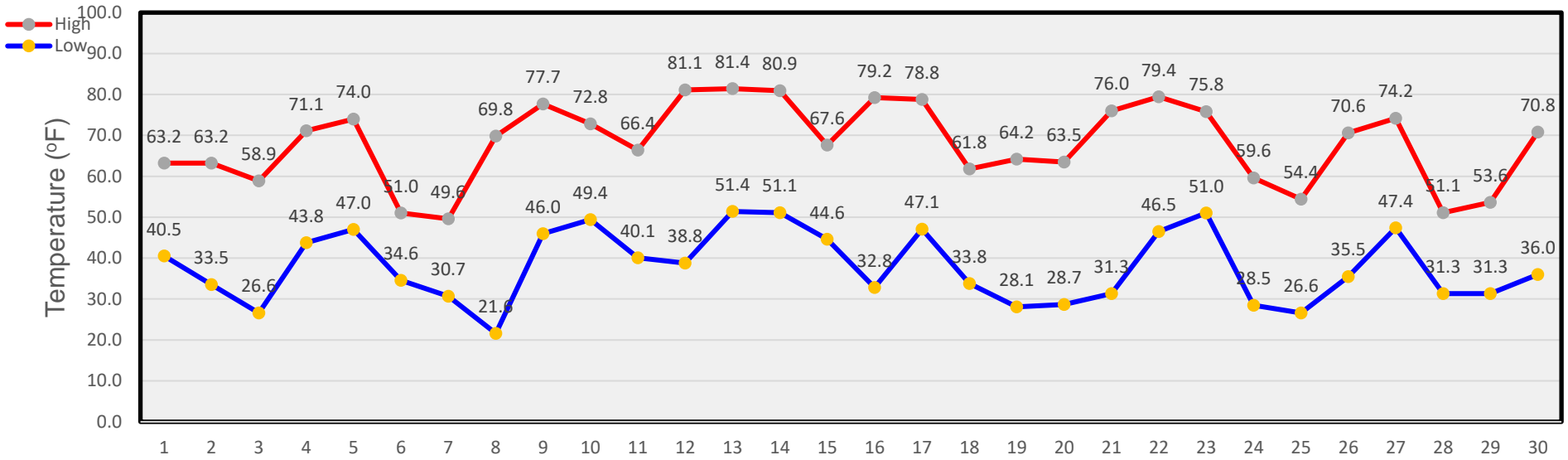
### March Temperatures



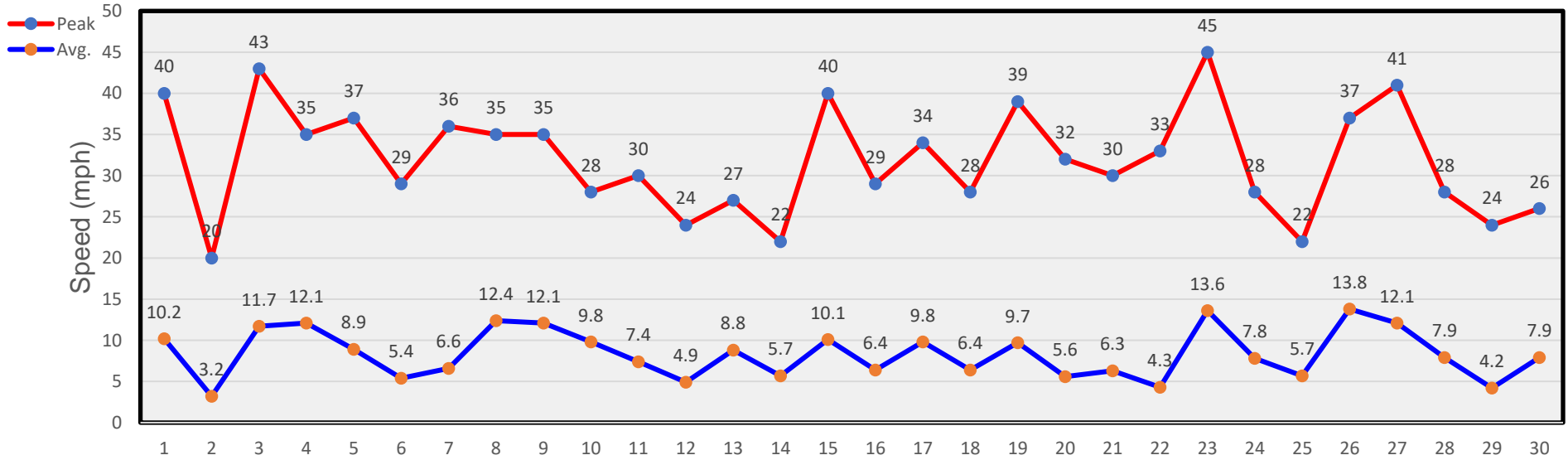
### March Winds



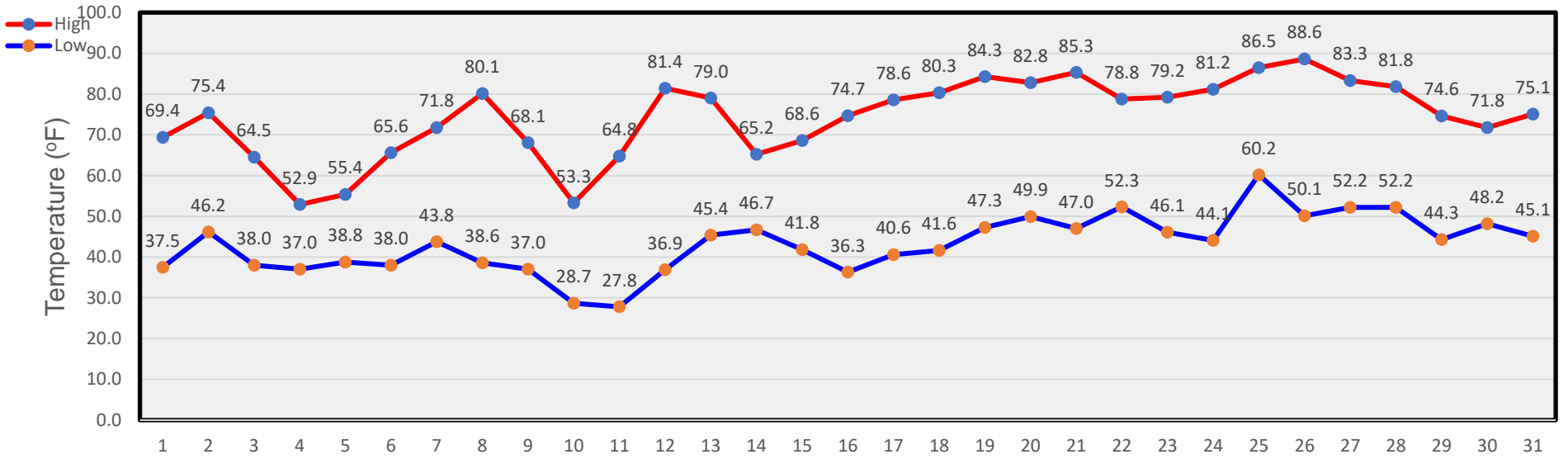
### April Temperatures



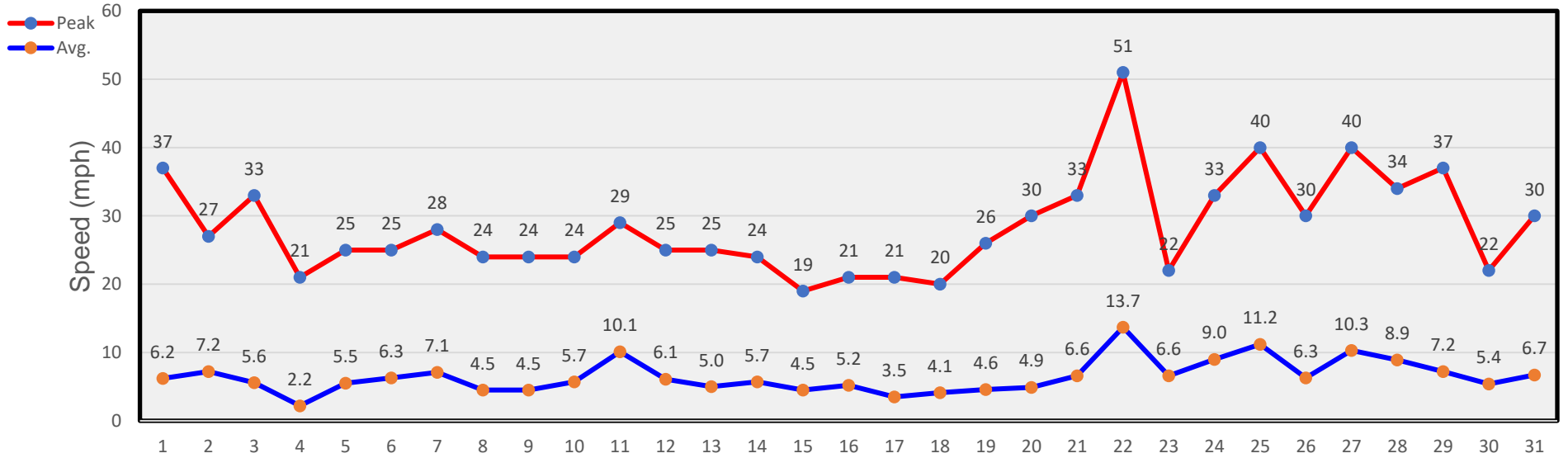
### April Winds



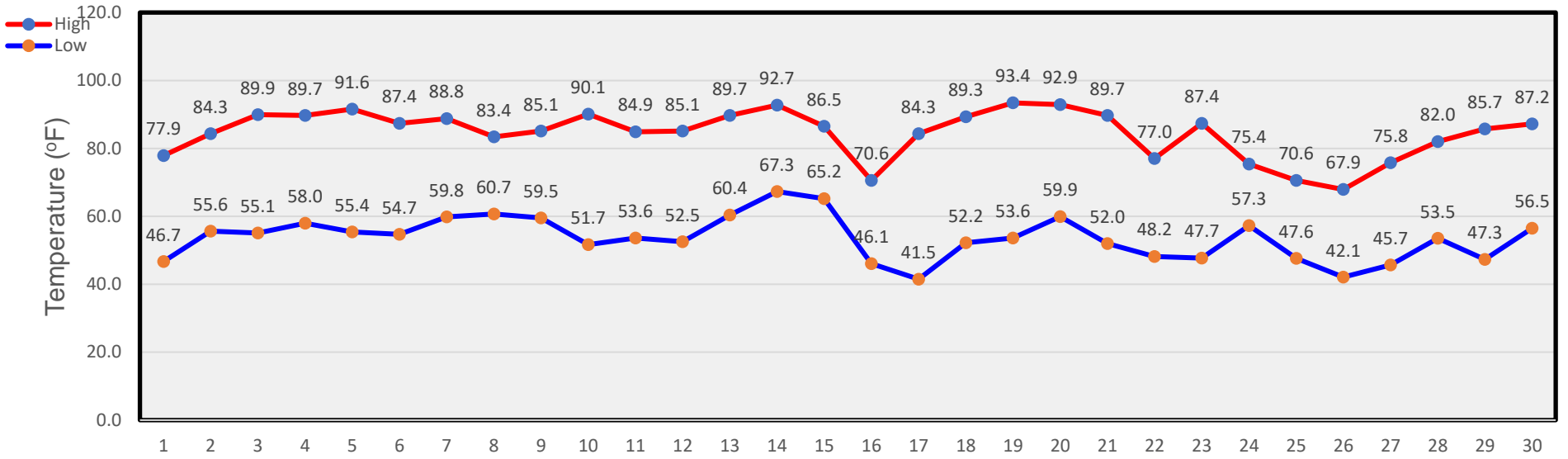
### May Temperatures



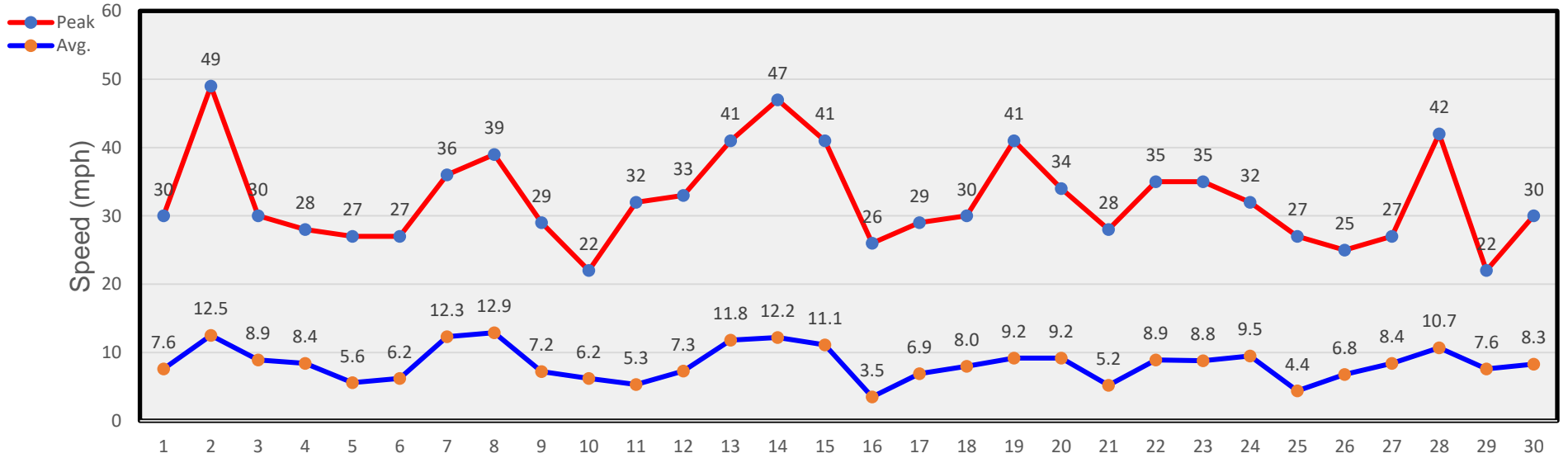
### May Winds



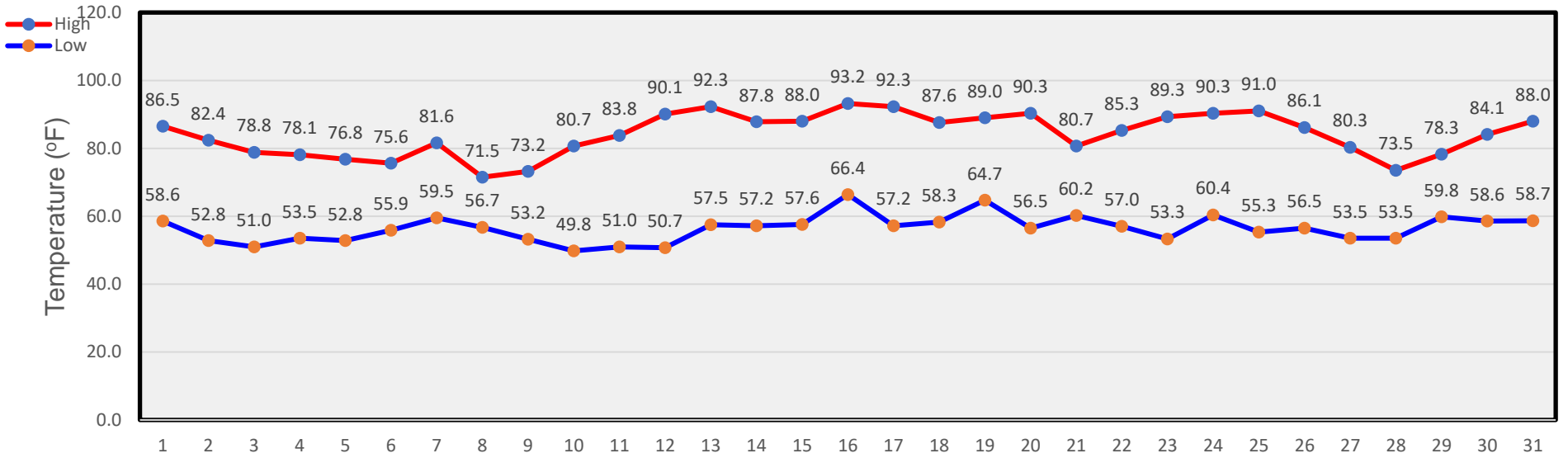
### June Temperatures



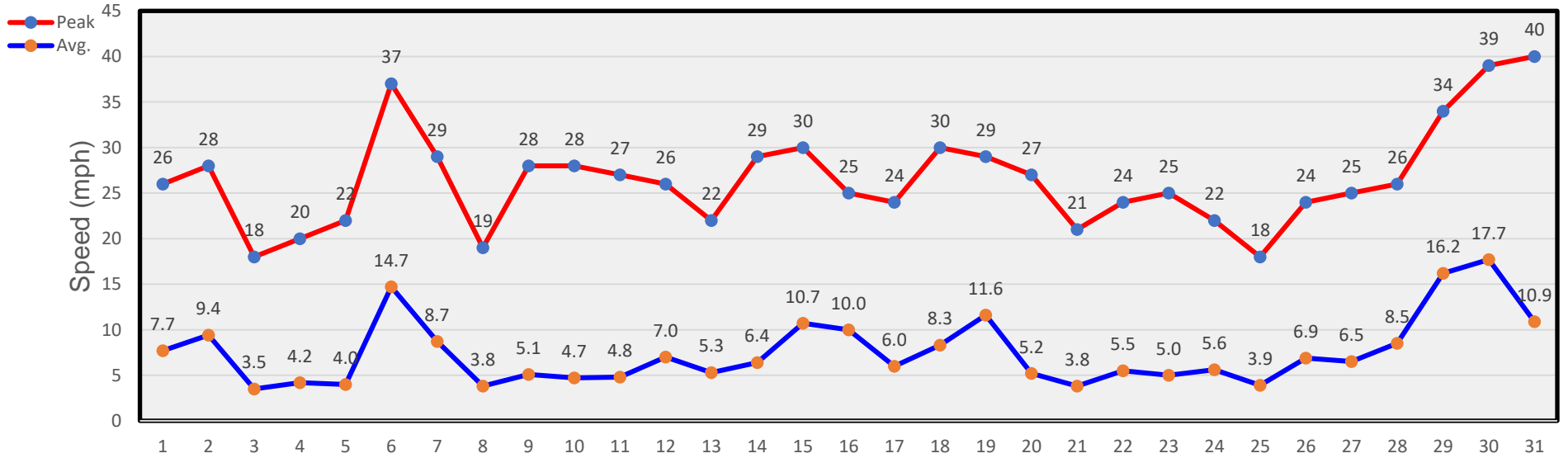
### June Winds



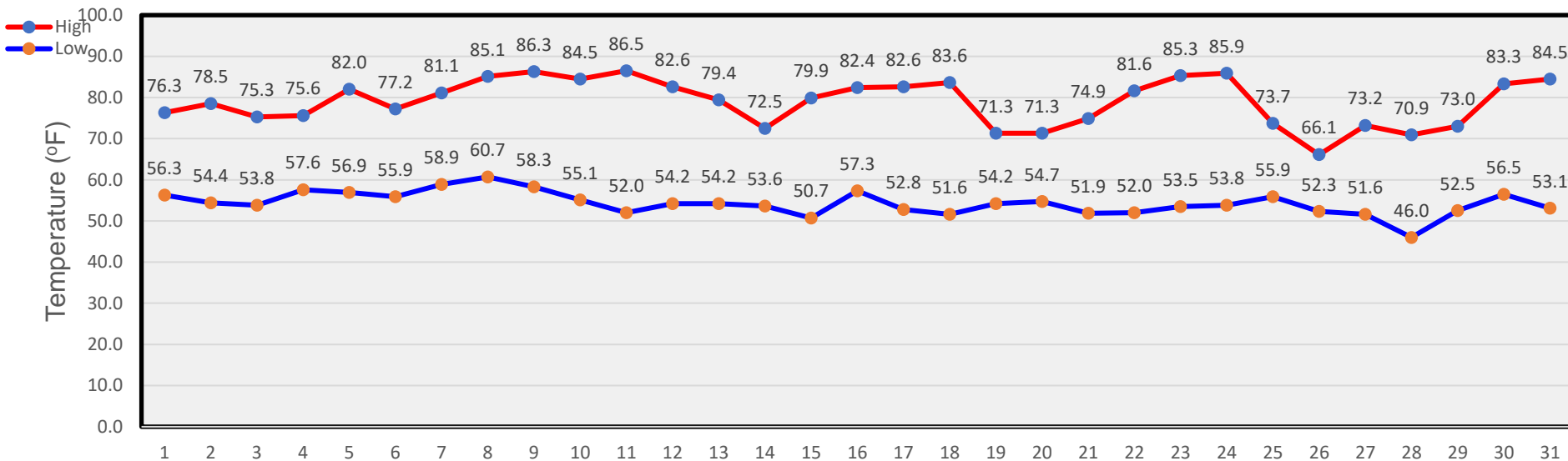
### July Temperatures



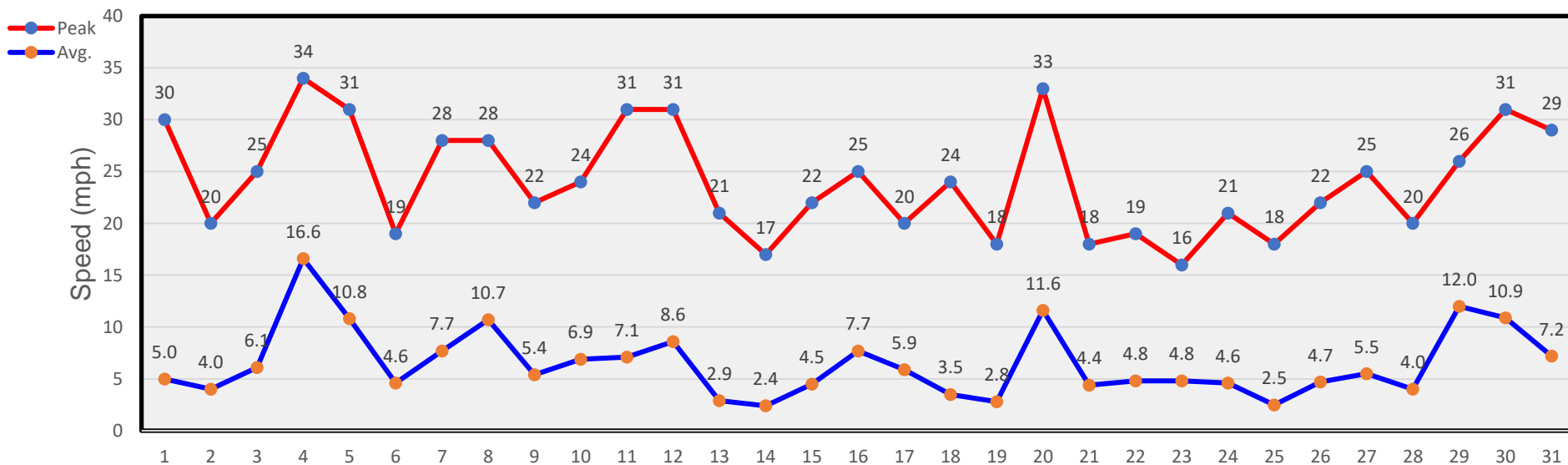
### July Winds



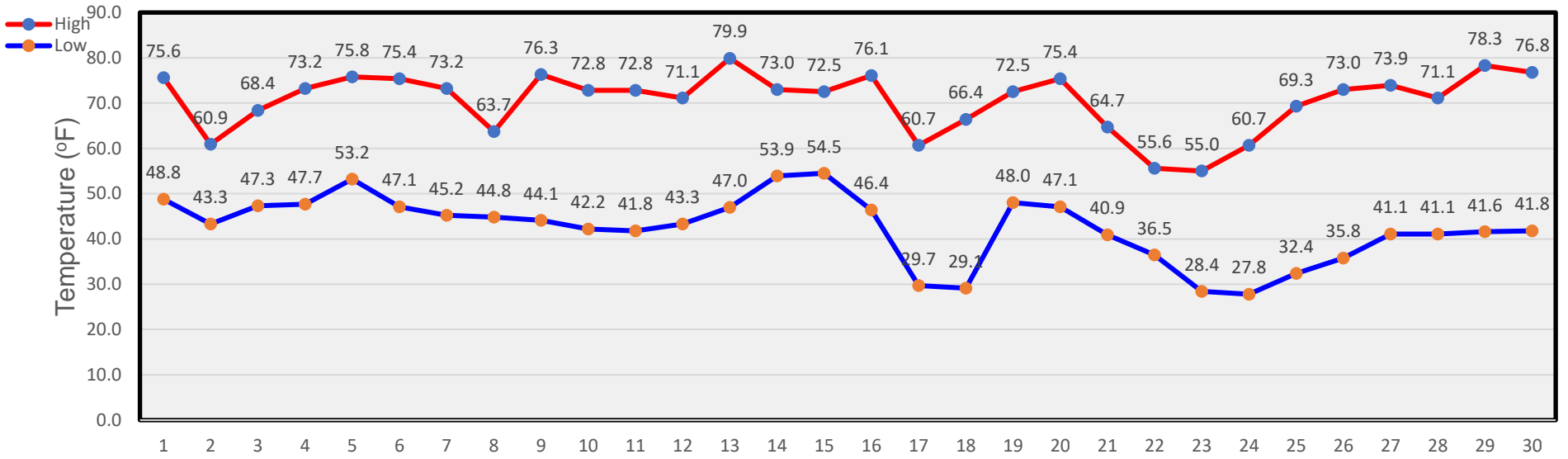
### August Temperatures



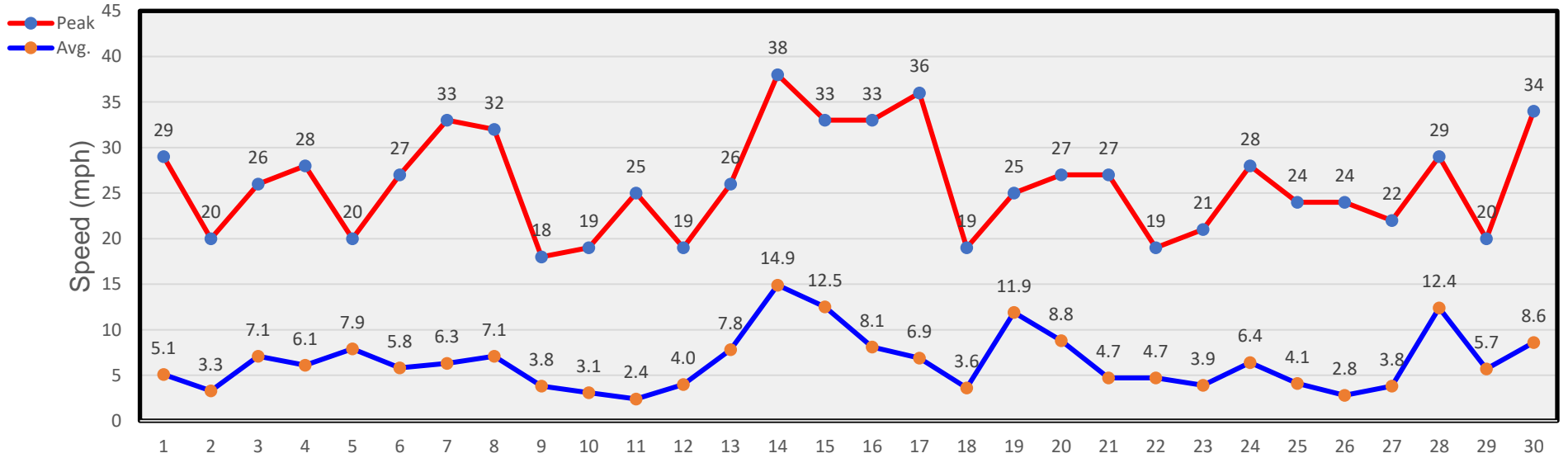
### August Winds



### September Temperatures

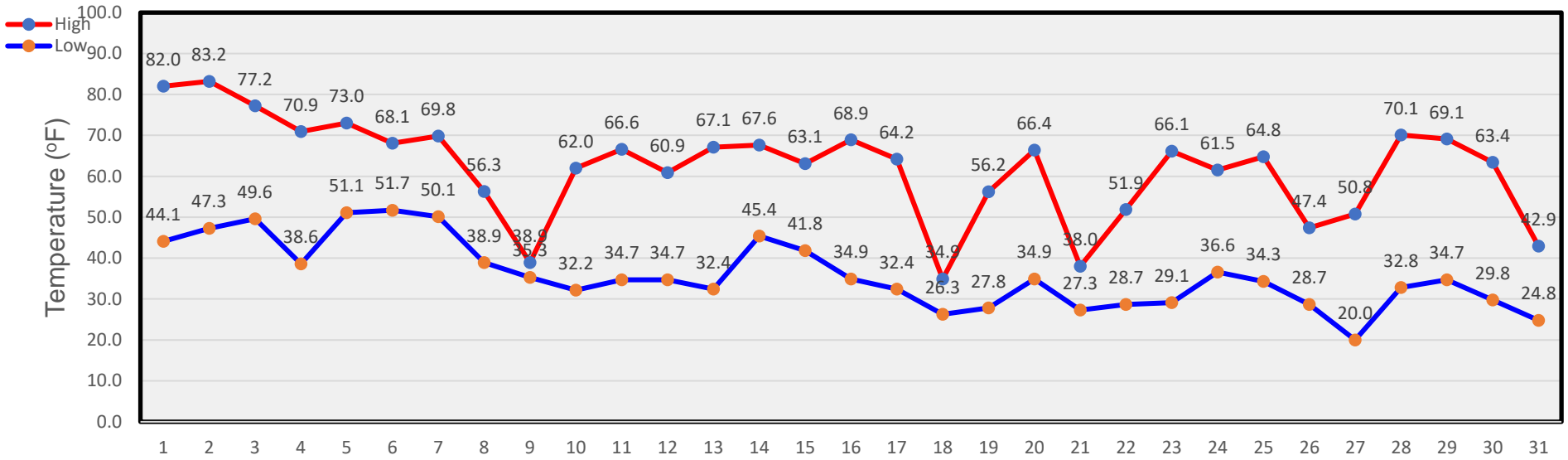


### September Winds

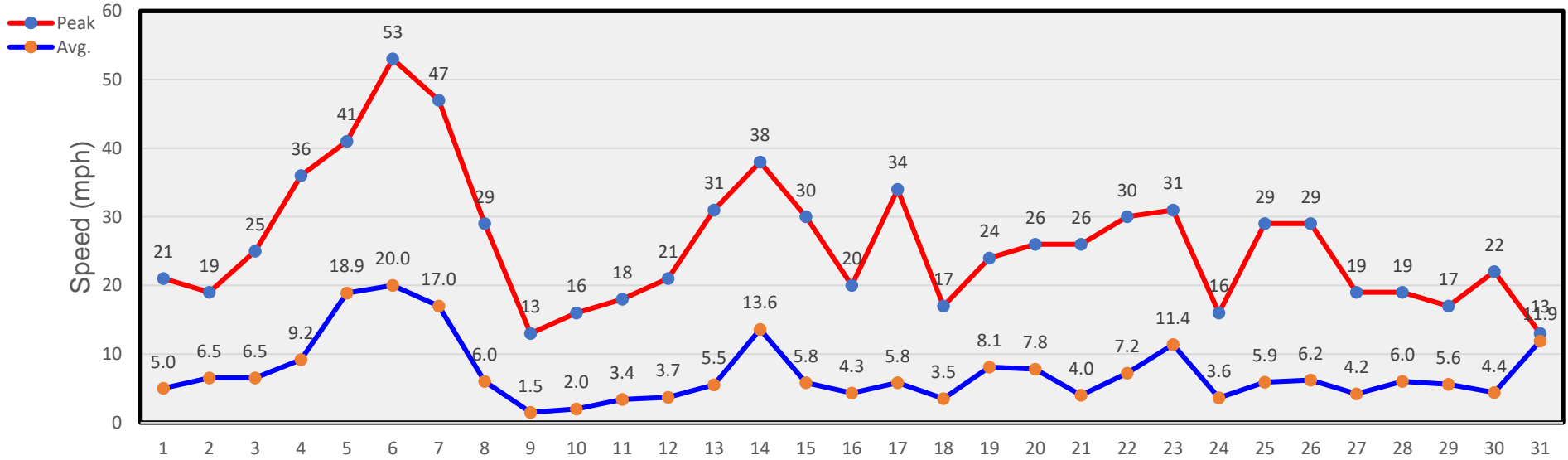




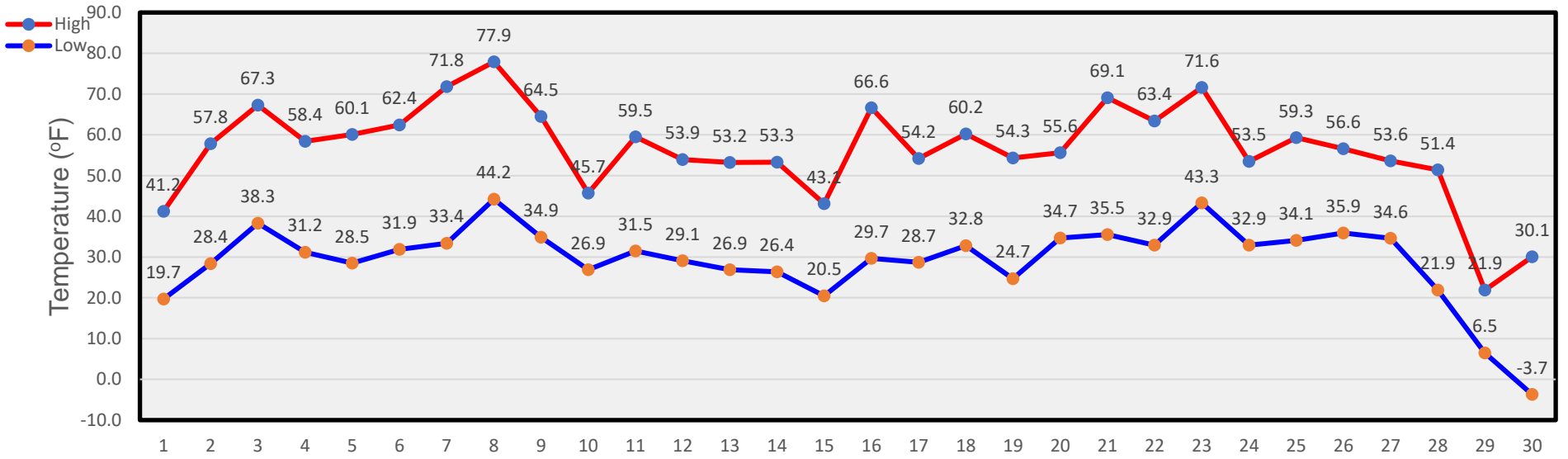
### October Temperatures



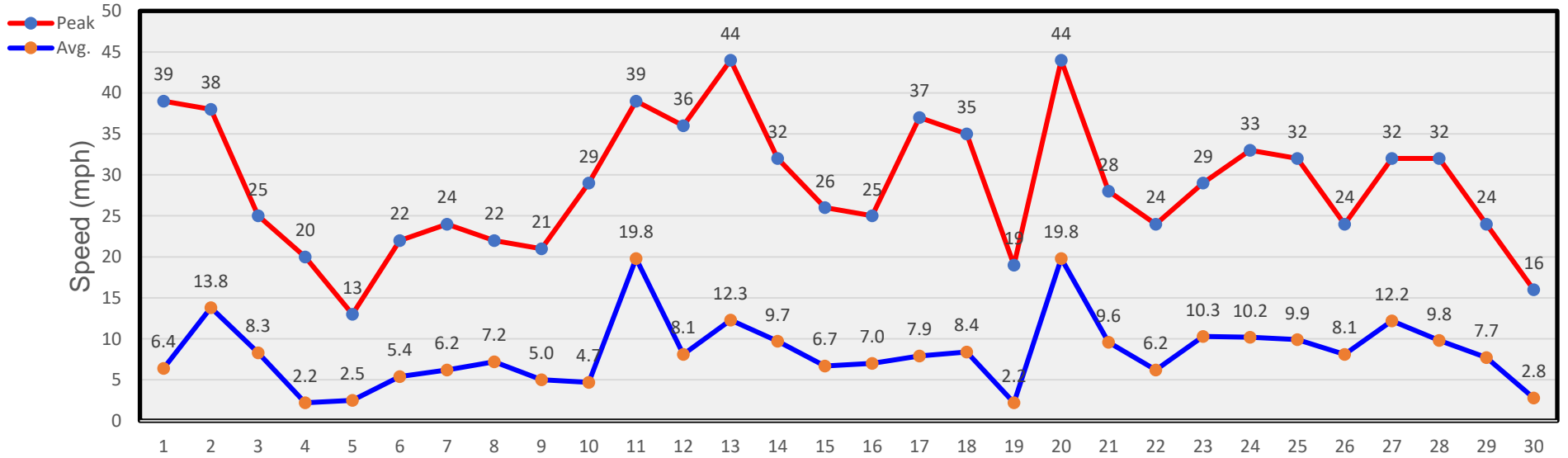
### October Winds



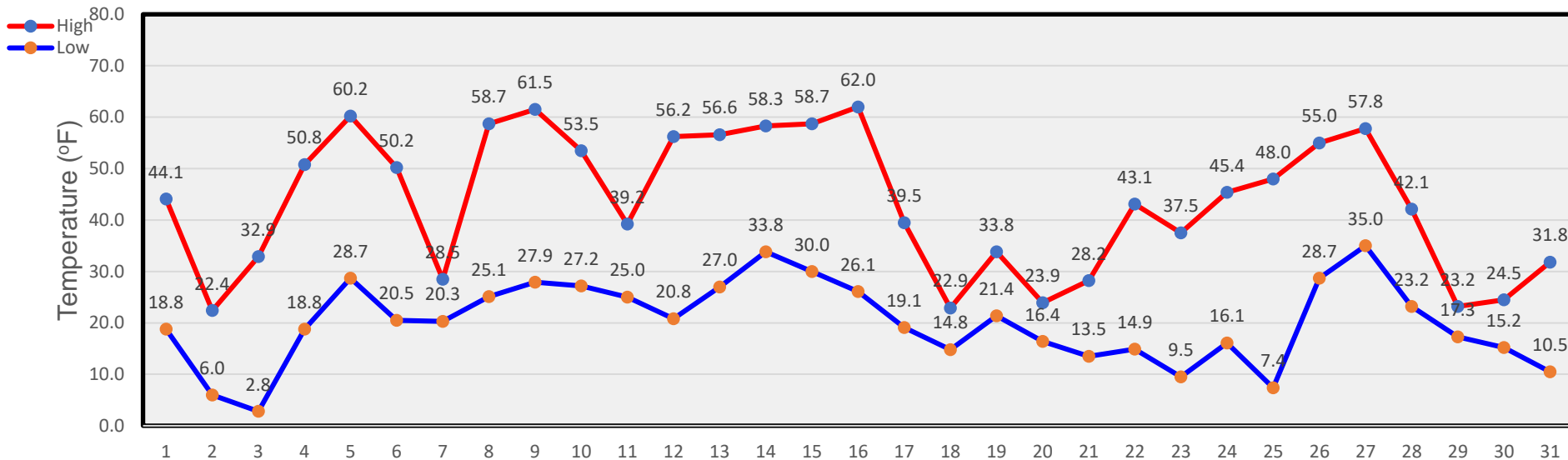
### November Temperatures



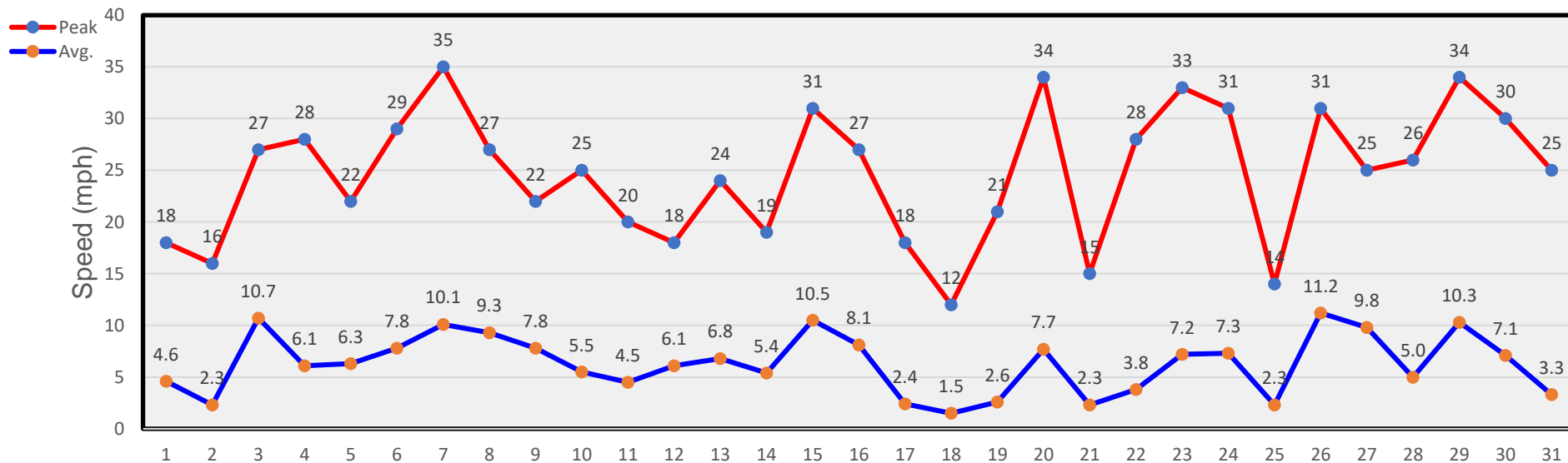
### November Winds



### December Temperatures



### December Winds



# Tables

## January

Day	Mean Temp.	High Temp.	High Temp. Time	Low Temp.	Low Temp. Time	Heat Degree Days	Cool Degree Days	Precip.	Average Wind Speed	Peak Wind Speed	Peak Wind Time	Wind Dominant Direction
1	41.7	50.2	1:15p	28.6	11:45p	25.6			7.1	27	12:00p	WNW
2	45.8	60.5	11:15a	25.0	4:00a	22.3			9.2	27	8:45p	SSE
3	44.5	52.3	1:15p	29.5	12:00m	24.1			9.2	38	12:00p	SE
4	37.2	52.2	12:00p	24.2	3:00a	26.8			8.4	30	10:30a	SSE
5	31.4	47.9	2:15p	21.9	7:30a	30.1			2.7	16	7:30p	NW
6	45.1	63.9	1:45p	25.4	12:15a	20.3			6.1	24	12:00m	ESE
7	53.7	64.7	11:00a	41.5	5:00a	11.9			9.0	28	11:15p	SSE
8	42.6	53.9	2:30p	26.6	12:00m	24.8			5.9	27	12:15a	WNW
9	23.9	29.5	2:15p	14.6	11:15p	43.0		0.07	7.1	20	12:15a	NNW
10	37.7	54.0	3:00p	12.8	2:00a	31.6			8.2	22	4:15a	SSE
11	44.4	63.7	12:15p	28.1	2:30a	19.1			7.8	22	4:00a	SE
12	33.9	44.8	10:30a	15.7	11:45p	34.8			5.5	32	10:45a	N
13	32.1	48.3	2:30p	12.1	1:15a	34.8			17.1	33	12:15p	SSE
14	51.0	<b>65.8</b>	1:45p	39.1	12:15a	12.5			11.9	27	1:45a	SSE
15	42.1	49.8	12:30p	26.6	9:00p	26.8			7.8	29	1:00p	S
16	22.8	31.6	12:15a	15.7	12:00m	41.4		0.13	5.7	29	7:30a	NNW
17	29.5	50.5	3:00p	<b>6.0</b>	5:15a	36.8		0.05	5.2	22	11:45p	SE
18	43.5	58.4	12:15p	28.7	8:00a	21.4			9.9	26	5:00p	SSE
19	36.0	48.6	11:00a	21.9	12:00m	29.8		0.12	5.7	22	1:15a	NNW
20	22.8	29.7	1:45p	19.1	6:45a	40.6			6.6	30	10:45p	NNW
21	27.9	43.9	1:00p	18.3	6:30a	33.9			10.1	29	12:30a	SSE
22	21.8	31.9	1:45p	11.1	4:15a	43.5			4.5	26	12:00m	NNW
23	31.1	49.2	1:15p	17.0	7:45a	31.9			9.0	30	1:00a	SSE
24	35.6	50.2	2:45p	20.0	3:45a	29.9			6.0	26	11:15p	ESE
25	37.8	45.8	1:15p	32.9	9:30p	25.7			20.7	<b>47</b>	3:00p	SSE
26	38.1	50.5	2:15p	31.3	7:45a	24.1			14.3	41	4:00a	SSE
27	38.7	50.7	3:30p	28.5	2:15a	25.4			7.3	22	4:30a	SE
28	33.6	47.1	2:45p	21.1	5:15a	30.9			4.4	19	11:15p	SSE
29	33.8	47.7	11:45a	20.3	12:00m	31.0			4.2	24	12:15p	NW
30	35.4	49.2	2:00p	16.5	2:15a	32.2			14.3	33	9:00a	SSE
31	45.9	61.3	1:15p	29.1	12:00m	19.8			6.6	27	2:30a	WNW
--	36.8 <sup>1</sup>	65.8 <sup>3</sup>	14 <sup>th</sup>	6.0 <sup>3</sup>	17 <sup>th</sup>	886.5 <sup>2</sup>	<sup>2</sup>	0.37 <sup>2</sup>	8.3 <sup>1</sup>	47 <sup>3</sup>	25 <sup>th</sup>	SSE

Footnotes: 1. Average; 2. Sum (total); 3. Max or Min  
 Heat Base: 65.0 Cool Base: 65.0  
 Method: (High + Low) / 2 (per ¼ hour)

- 9<sup>th</sup>: About 1.5 inches of light snow this morning, a welcome sight!
- 16<sup>th</sup>: Another 2 inches and still snowing this morning.

## February

Day	Mean Temp.	High Temp.	High Temp. Time	Low Temp.	Low Temp. Time	Heat Degree Days	Cool Degree Days	Precip.	Average Wind Speed	Peak Wind Speed	Peak Wind Time	Wind Dominant Direction
1	40.8	56.3	1:45p	25.8	1:30a	24.0			10.0	33	7:00a	SSE
2	37.5	50.8	11:00a	27.9	10:15p	25.7		0.01	2.7	21	3:45p	NW
3	31.2	44.1	2:00p	16.5	7:45a	34.7			3.1	28	2:45p	N
4	33.3	47.1	3:45p	15.1	7:15a	33.9			12.3	37	12:30p	SSE
5	38.0	46.0	12:45p	24.5	12:00m	29.8			5.6	24	9:45a	N
6	29.2	43.9	3:15p	10.5	6:30a	37.8			6.0	26	7:15p	N
7	38.1	50.8	2:00p	26.4	4:00a	26.4			6.5	28	10:00p	ESE
8	40.9	53.2	4:30p	26.3	7:30a	25.3			9.1	27	9:00p	SSE
9	42.9	65.2	2:00p	24.5	12:00m	20.2			8.8	31	5:15p	SSE
10	14.3	24.5	12:15a	6.7	12:00m	49.4		0.10	4.6	22	4:45a	NNW
11	14.8	29.3	4:45p	-2.6	4:00a	51.7			1.6	10	10:30a	E
12	31.3	47.1	2:15p	12.3	3:00a	35.3			5.3	35	12:00m	NNW
13	38.0	53.5	11:15a	23.6	11:00p	26.5			9.8	35	1:45a	SSE
14	46.4	63.9	12:15p	29.8	12:15a	18.2			9.1	30	4:00a	SSE
15	42.4	59.3	1:30p	16.9	7:00a	26.9			8.0	40	10:30p	SSE
16	25.1	42.8	12:15a	8.1	12:00m	39.5			6.0	28	8:30a	NNW
17	15.3	31.5	3:00p	-0.8	11:45p	49.6			16.2	<b>51</b>	7:00a	SSE
18	12.3	36.6	3:00p	<b>-7.7</b>	6:45a	50.6			11.2	47	11:15p	NNW
19	33.0	55.1	3:00p	12.1	11:45p	31.4			10.1	44	12:15a	SE
20	32.2	51.3	2:30p	11.2	1:30a	33.8			4.9	22	11:15p	SSE
21	36.8	48.3	2:15p	22.7	12:00m	29.5			6.4	28	1:30p	SSE
22	31.1	50.5	2:45p	10.7	6:45a	34.4			6.0	31	8:45p	NNW
23	38.0	53.8	2:15p	20.5	6:45a	27.8			7.7	27	8:15p	SSE
24	43.3	60.5	1:30p	27.0	11:30p	21.3			7.3	22	3:45a	SSE
25	35.0	53.9	2:45p	18.9	6:45a	28.6			7.5	31	11:00p	NNW
26	45.0	66.3	2:45p	24.5	4:00a	19.6			7.9	28	12:45p	SSE
27	52.6	70.1	2:00p	35.8	11:45p	12.1			5.1	18	12:15a	N
28	56.5	<b>72.7</b>	12:30p	38.6	12:45a	9.4			8.5	25	9:45p	SSE
--	34.8 <sup>1</sup>	72.7 <sup>3</sup>	28 <sup>th</sup>	-7.7 <sup>3</sup>	18 <sup>th</sup>	852.9 <sup>2</sup>	<sup>2</sup>	0.11 <sup>2</sup>	7.8 <sup>1</sup>	51 <sup>3</sup>	17 <sup>th</sup>	SSE

Footnotes: 1. Average; 2. Sum (total); 3. Max or Min  
 Heat Base: 65.0 Cool Base: 65.0  
 Method: (High + Low) / 2 (per ¼ hour)

- 10<sup>th</sup>: About two inches of snow last night and still falling. We sure need precip.

## March

Day	Mean Temp.	High Temp.	High Temp. Time	Low Temp.	Low Temp. Time	Heat Degree Days	Cool Degree Days	Precip.	Average Wind Speed	Peak Wind Speed	Peak Wind Time	Wind Dominant Direction
1	52.5	62.9	11:30a	39.6	7:30a	13.8			3.5	19	11:45a	SE
2	42.9	56.9	3:30p	32.4	6:00a	20.3			10.4	37	11:00p	SSE
3	39.7	51.1	2:00p	32.4	6:30a	23.3			24.9	46	10:45p	SE
4	48.1	65.6	12:30p	35.3	12:15a	14.6			14.2	44	12:45a	SSE
5	46.3	60.4	2:30p	28.7	5:30a	20.4			11.1	39	5:30p	SE
6	54.0	70.9	4:15p	41.5	3:00a	8.8			12.3	31	1:15a	SSE
7	52.3	62.7	11:15a	39.6	11:00p	13.8			7.5	30	5:45a	S
8	39.6	48.5	1:15p	25.1	11:30p	28.2		0.16	7.2	28	2:15p	S
9	32.3	48.8	1:15p	17.5	6:45a	31.8			7.8	29	11:45a	WSW
10	35.9	47.4	12:30p	26.6	7:00a	28.0			10.8	44	3:15p	SSW
11	35.0	47.3	2:30p	22.2	6:00a	30.3			11.4	37	8:30p	SSE
12	29.9	39.3	10:30a	19.5	11:45p	35.6			6.8	40	1:00p	SW
13	26.8	40.9	1:45p	14.0	4:30a	37.5			5.7	20	11:45a	SE
14	33.0	49.9	3:15p	10.2	5:45a	34.9			14.2	45	3:30p	SSE
15	45.1	60.1	2:15p	33.8	11:15p	18.1			12.7	43	12:45a	SSE
16	39.5	53.9	1:15p	21.8	6:30a	27.2			12.4	42	11:15p	SSE
17	41.6	53.1	3:15p	32.8	4:00a	22.1			22.6	45	1:00a	SSE
18	40.7	54.5	2:15p	31.9	5:45a	21.8			17.4	44	2:15p	SSE
19	39.4	49.8	1:00p	31.5	9:45p	24.3			10.2	44	1:00p	SSE
20	19.9	32.8	12:15a	10.0	10:45p	43.6		0.49	6.4	29	8:45a	NNW
21	17.8	29.7	3:00p	0.5	6:45a	49.9			4.7	26	9:30p	NNW
22	24.9	35.9	11:30a	20.6	12:00m	36.8		0.02	6.4	30	12:15a	NNW
23	31.0	43.3	3:15p	16.2	6:15a	35.3			4.7	28	11:45p	N
24	40.3	56.5	4:00p	27.5	4:15a	23.0			6.8	27	12:45a	SSE
25	47.2	65.0	2:15p	27.0	5:45a	19.0			5.8	25	1:00p	SE
26	51.2	61.0	1:15p	35.8	12:00m	16.6			8.6	36	2:30a	W
27	39.8	55.1	1:45p	22.2	6:30a	26.3			10.7	41	9:45p	SE
28	47.1	58.4	12:00p	36.6	5:45a	17.5			12.7	36	12:30a	SSE
29	51.6	64.7	1:15p	40.5	12:00m	12.4			10.7	39	6:00p	S
30	43.8	56.2	12:45p	30.6	12:00m	21.6			5.8	28	6:00a	WNW
31	45.9	62.3	2:30p	26.0	5:45a	20.8			12.3	39	4:00p	SSE
--	39.8 <sup>1</sup>	70.9 <sup>3</sup>	6 <sup>th</sup>	0.5 <sup>3</sup>	21 <sup>st</sup>	777.6 <sup>2</sup>	2	0.67 <sup>2</sup>	10.3 <sup>1</sup>	46 <sup>3</sup>	3 <sup>rd</sup>	SSE

Footnotes: 1. Average; 2. Sum (total); 3. Max or Min  
 Heat Base: 65.0 Cool Base: 65.0  
 Method: (High + Low) / 2 (per ¼ hour)

- 9th: ~3 inches of welcome snow last night which provided 0.16 inches of precipitation.
- 20<sup>th</sup>: Another 4 inches of the white stuff and still coming down...neat!
- 21<sup>st</sup>: 2 more inches yesterday giving almost 1/2 inches of moisture total.

## April

Day	Mean Temp.	High Temp.	High Temp. Time	Low Temp.	Low Temp. Time	Heat Degree Days	Cool Degree Days	Precip.	Average Wind Speed	Peak Wind Speed	Peak Wind Time	Wind Dominant Direction
1	50.2	63.2	11:45a	40.5	11:00p	13.2			10.2	40	12:45a	S
2	50.9	63.2	3:30p	33.5	6:45a	16.7			3.2	20	9:45p	WNW
3	43.3	58.9	5:00p	26.6	5:15a	22.3			11.7	43	5:15p	SE
4	57.1	71.1	1:00p	43.8	6:45a	7.6			12.1	35	12:30a	SE
5	58.5	74.0	2:30p	47.0	11:45p	4.5			8.9	37	8:15p	S
6	42.0	51.0	1:45p	34.6	6:30a	22.2			5.4	29	2:00p	S
7	38.8	49.6	12:30p	30.7	12:00m	24.8			6.6	36	12:00p	N
8	46.8	69.8	4:30p	<b>21.6</b>	5:45a	19.3			12.4	35	2:00p	SE
9	60.5	77.7	3:15p	46.0	1:30a	3.2			12.1	35	4:00p	SSE
10	59.6	72.8	1:45p	49.4	4:30a	3.9			9.8	28	5:00p	SSE
11	53.7	66.4	5:30p	40.1	7:45a	11.8		0.01	7.4	30	12:15p	SSE
12	59.3	81.1	4:30p	38.8	5:15a	5.1			4.9	24	3:15p	SSE
13	66.6	<b>81.4</b>	3:45p	51.4	11:15p		1.4		8.8	27	7:45a	SSE
14	64.8	80.9	3:15p	51.1	5:15a		1.0		5.7	22	11:30p	SE
15	55.4	67.6	5:16p	44.6	11:30p	8.9			10.1	40	10:00a	WNW
16	58.8	79.2	5:00p	32.8	7:00a	9.0			6.4	29	3:00p	SSE
17	63.0	78.8	3:00p	47.1	2:15a	2.0			9.8	34	7:00p	SSE
18	51.1	61.8	3:45p	33.8	12:00m	17.2			6.4	28	6:30a	S
19	44.8	64.2	3:30p	28.1	2:15a	18.9			9.7	39	5:30a	SE
20	46.1	63.5	4:00p	28.7	3:45a	18.9			5.6	32	11:30p	NNW
21	56.4	76.0	3:00p	31.3	7:00a	11.3			6.3	30	12:12a	SSE
22	65.4	79.4	1:15p	46.5	2:30a	2.0			4.3	33	12:45p	SSE
23	63.5	75.8	4:30a	51.0	12:00m	1.6			13.6	<b>45</b>	1:00p	SSE
24	44.7	59.6	4:12p	28.5	11:45p	21.0			7.8	28	1:45p	NNW
25	37.9	54.4	4:30p	26.6	7:00a	24.5			5.7	22	4:30p	NNW
26	51.8	70.6	2:45p	35.5	4:45a	12.0			13.8	37	3:00a	SSE
27	56.6	74.2	1:30p	47.4	6:30a	4.2			12.1	41	2:00p	SSE
28	37.4	51.1	12:15a	31.3	8:45p	23.8		0.60	7.9	28	4:15a	NNW
29	39.8	53.6	4:00p	31.3	5:15a	22.6		0.25	4.2	24	4:30p	NNW
30	54.7	70.8	2:15p	36.0	6:30a	11.6			7.9	26	12:15a	SSE
--	52.7 <sup>1</sup>	81.4 <sup>3</sup>	13 <sup>th</sup>	21.6 <sup>3</sup>	8 <sup>th</sup>	363.8 <sup>2</sup>	2.4 <sup>2</sup>	0.86 <sup>2</sup>	8.4 <sup>1</sup>	45 <sup>3</sup>	23 <sup>rd</sup>	SSE

Footnotes: 1. Average; 2. Sum (total); 3. Max or Min  
 Heat Base: 65.0 Cool Base: 65.0  
 Method: (High + Low) / 2 (per ¼ hour)

- 29<sup>th</sup>: WELCOME PRECIPITATION....after a really dry April we received about 0.85 inches of precip yesterday and last night with 3 inches of snow still on the ground this morning!!!



## May

Day	Mean Temp.	High Temp.	High Temp. Time	Low Temp.	Low Temp. Time	Heat Degree Days	Cool Degree Days	Precip.	Average Wind Speed	Peak Wind Speed	Peak Wind Time	Wind Dominant Direction
1	55.3	69.4	4:15p	37.5	6:45a	11.5			6.2	37	5:15p	NNW
2	60.8	75.4	12:30p	46.2	6:45a	4.2			7.2	27	12:15a	SSE
3	50.2	64.5	4:05a	38.0	12:00m	13.8			5.6	33	4:30p	NNW
4	43.6	52.9	1:45p	37.0	1:00a	20.0			2.2	21	1:45p	NNW
5	45.7	55.4	11:15a	38.8	12:00m	17.9			5.5	25	1:00p	SE
6	49.6	65.6	5:15p	38.0	4:30a	13.2		0.02	6.3	25	7:00a	SSE
7	55.8	71.8	2:45p	43.8	12:00m	7.2			7.1	28	5:00a	SSE
8	60.3	80.1	2:00p	38.6	3:45a	5.7			4.5	24	6:45p	WNW
9	50.2	68.1	11:00a	37.0	6:00a	12.5		0.02	4.5	24	12:15a	ESE
10	41.2	53.3	5:30p	28.7	8:00a	24.0		0.06	5.7	24	3:45a	NNW
11	48.8	64.8	3:30p	<b>27.8</b>	5:00a	18.7			10.1	29	6:00p	SE
12	62.3	81.4	4:30p	36.9	5:45a	5.8			6.1	25	12:15a	SSE
13	64.7	79.0	2:30p	45.4	5:15a	2.8			5.0	25	4:15p	N
14	53.7	65.2	3:30p	46.7	12:00m	9.1		0.03	5.7	24	3:30a	NNW
15	54.7	68.6	3:00p	41.8	5:45a	9.8			4.5	19	12:45p	N
16	57.1	74.7	3:45p	36.3	5:00a	9.5			5.2	21	1:15p	N
17	61.9	78.6	4:45p	40.6	6:00a	5.4			3.5	21	12:15p	N
18	63.1	80.3	1:15p	41.6	4:15a	4.0			4.1	20	1:30p	ESE
19	67.8	84.3	12:45p	47.3	2:30a		0.8		4.6	26	3:15p	ESE
20	65.7	82.8	12:30p	49.9	5:30a		1.4		4.9	30	4:15p	ESE
21	69.1	85.3	12:45p	47.0	2:30a		1.2		6.6	33	12:00m	SSE
22	65.0	78.8	1:00p	52.3	10:15a		0.6	0.12	13.7	<b>51</b>	8:15p	SSE
23	64.3	79.2	4:15p	46.1	4:15a	2.4			6.6	22	6:45a	N
24	65.3	81.2	3:45p	44.1	5:45a	2.4			9.0	33	3:30p	SSE
25	72.6	86.5	3:15p	60.2	6:00a		8.3		11.2	40	1:45p	SSE
26	72.0	<b>88.6</b>	2:30p	50.1	6:15a		4.3		6.3	30	11:15a	SSE
27	71.2	83.3	3:00p	52.2	6:15a		2.8		10.3	40	12:45p	S
28	68.8	81.8	3:00p	52.2	6:15a		2.0		8.9	34	5:00p	S
29	62.0	74.6	3:30p	44.3	6:00a	5.6			7.2	37	1:45p	SE
30	58.4	71.8	5:00p	48.2	5:05a	5.0			5.4	22	6:45a	NNW
31	58.3	75.1	2:15p	45.1	5:15a	4.9		0.01	6.7	30	2:45p	SSE
--	59.3 <sup>1</sup>	88.6 <sup>3</sup>	26 <sup>h</sup>	27.8 <sup>3</sup>	11 <sup>h</sup>	215.3 <sup>2</sup>	21.3 <sup>2</sup>	0.26 <sup>2</sup>	6.5 <sup>1</sup>	51 <sup>3</sup>	22 <sup>nd</sup>	SSE

Footnotes: 1. Average; 2. Sum (total); 3. Max or Min  
Heat Base: 65.0 Cool Base: 65.0  
Method: (High + Low) / 2 (per ¼ hour)

## June

Day	Mean Temp.	High Temp.	High Temp. Time	Low Temp.	Low Temp. Time	Heat Degree Days	Cool Degree Days	Precip.	Average Wind Speed	Peak Wind Speed	Peak Wind Time	Wind Dominant Direction
1	61.3	77.9	2:15p	46.7	6:45a	2.7			7.6	30	11:30p	SSE
2	69.3	84.3	12:30p	55.6	6:15a		4.9		12.5	49	10:00p	SE
3	74.7	89.9	4:45p	55.1	6:45a		7.5		8.9	30	12:15a	SSE
4	75.0	89.7	2:00p	58.0	6:45a		8.8		8.4	28	7:30p	SSE
5	76.0	91.6	2:15p	55.4	6:15a		8.5		5.6	27	9:30p	ESE
6	70.7	87.4	1:00p	54.7	6:15a		6.1	0.02	6.2	27	3:45p	SE
7	72.3	88.8	4:30p	59.8	3:30a		9.3		12.3	36	1:45p	SSE
8	70.6	83.4	2:30p	60.7	5:45a		7.1	0.01	12.9	39	2:45p	SSE
9	71.1	85.1	5:30p	59.5	5:00a		7.3		7.2	29	10:45p	SSE
10	72.9	90.1	3:30p	51.7	5:45a		5.9		6.2	22	2:45p	SSE
11	67.1	84.9	1:15p	53.6	4:00a		4.3	0.01	5.3	32	6:15p	NNW
12	68.0	85.1	3:15p	52.5	6:00a		3.8	0.05	7.3	33	5:15p	NNW
13	74.6	89.7	12:15p	60.4	3:30a		10.1	0.01	11.8	41	3:15p	SSE
14	78.3	92.7	3:30p	67.3	4:45a		15.0		12.2	47	2:30p	SSE
15	74.9	86.5	2:45p	65.2	6:00a		10.8		11.1	41	4:15p	SSE
16	60.2	70.6	3:00p	46.1	12:00m	6.7		0.02	3.5	26	5:00p	NNW
17	64.8	84.3	5:15p	41.5	4:30a	2.1			6.9	29	11:45p	ESE
18	74.0	89.3	1:45p	52.2	6:15a		5.8		8.0	30	1:15a	SSE
19	75.2	93.4	12:15p	53.6	3:45a		8.5		9.2	41	7:00p	SSE
20	79.0	92.9	2:00p	59.9	12:00m		11.4		9.2	34	1:15a	SE
21	69.0	89.7	4:00p	52.0	6:00a		5.8	0.02	5.2	28	4:15p	E
22	62.1	77.0	12:30p	48.2	12:00m	2.4		0.01	8.9	35	4:00p	SSE
23	68.0	87.4	1:45p	47.7	12:15a		2.6		8.8	35	7:30p	SSE
24	65.4	75.4	9:00a	57.3	4:15a		1.3		9.5	32	2:00a	N
25	55.7	70.6	12:45p	47.6	12:00m	5.9		1.95	4.4	27	7:45p	SE
26	54.0	67.9	1:15p	42.1	5:30a	10.0		0.03	6.8	25	8:30p	SSE
27	62.4	75.8	2:15p	45.7	6:00a	4.3			8.4	27	11:45p	SSE
28	63.7	82.0	1:00p	53.5	2:45p		2.8	0.24	10.7	42	3:45p	SSE
29	68.9	85.7	3:45p	47.3	5:00a		1.5		7.6	22	12:15a	SSE
30	73.5	87.2	3:45p	56.5	6:45a		6.8		8.3	30	2:30a	SSE
--	69.1 <sup>1</sup>	93.4 <sup>3</sup>	19 <sup>th</sup>	41.5 <sup>3</sup>	17 <sup>th</sup>	34.0 <sup>2</sup>	155.9 <sup>2</sup>	2.37 <sup>2</sup>	8.4 <sup>1</sup>	49 <sup>3</sup>	2 <sup>nd</sup>	SSE

Footnotes: 1. Average; 2. Sum (total); 3. Max or Min  
Heat Base: 65.0 Cool Base: 65.0  
Method: (High + Low) / 2 (per ¼ hour)

## July

Day	Mean Temp.	High Temp.	High Temp. Time	Low Temp.	Low Temp. Time	Heat Degree Days	Cool Degree Days	Precip.	Average Wind Speed	Peak Wind Speed	Peak Wind Time	Wind Dominant Direction
1	69.4	86.5	2:30p	58.6	8:30p		7.6	0.07	7.7	26	1:30a	SSE
2	63.2	82.4	11:15a	52.8	4:00a		2.6	0.40	9.4	28	3:45p	SE
3	61.5	78.8	1:45p	51.0	6:00a	0.1		0.08	3.5	18	3:15p	N
4	64.6	78.1	4:15p	53.5	6:30a		0.8		4.2	20	12:00p	N
5	61.5	76.8	1:45p	52.8	7:00a	0.2		0.30	4.0	22	7:30p	NNW
6	63.9	75.6	2:45p	55.9	12:15a		0.8	0.12	14.7	37	9:45p	SE
7	64.7	81.6	12:00p	59.5	6:15a		5.6	0.27	8.7	29	12:15a	SSE
8	62.3	71.5	12:30p	56.7	3:45a	0.9		0.26	3.8	19	1:00p	SSE
9	59.6	73.2	12:30p	53.2	3:45p	1.8		1.12	5.1	28	3:15p	SSE
10	63.0	80.7	2:00p	<b>49.8</b>	5:15a		0.3	0.03	4.7	28	4:30p	SE
11	67.5	83.8	1:15p	51.0	1:30a		2.4	0.10	4.8	27	7:45p	N
12	72.2	90.1	3:30p	50.7	2:45a		5.4	0.02	7.0	26	9:30p	SSE
13	76.5	92.3	3:30p	57.5	6:45a		9.9		5.3	22	1:00a	SSE
14	72.5	87.8	1:45p	57.2	5:15a		7.5		6.4	29	6:00p	SSE
15	75.7	88.0	3:00p	57.6	7:00p		7.8		10.7	30	8:00p	SSE
16	78.4	<b>93.2</b>	2:45p	66.4	6:15a		14.8		10.0	25	1:15a	SSE
17	77.0	92.3	3:15p	57.2	6:30a		9.8		6.0	24	1:00p	N
18	72.8	87.6	2:45p	58.3	6:00a		7.9	0.01	8.3	30	1:15p	SSE
19	75.8	59.0	4:45p	64.7	6:15a	3.2			11.6	29	12:45p	SSE
20	75.7	90.3	4:15p	56.5	6:45a		8.4		5.2	27	2:45p	SE
21	69.7	80.7	3:45p	60.2	11:45p		5.4		3.8	21	3:15p	N
22	69.8	85.3	4:00p	57.0	1:15a		6.2		5.5	24	7:00a	SSE
23	73.3	89.3	3:30p	53.3	6:15a		6.3		5.0	25	11:15p	ESE
24	71.6	90.3	1:45p	60.4	6:00a		10.4	0.05	5.6	22	2:15a	SSE
25	71.5	91.0	2:30p	55.3	5:45a		8.2	0.19	3.9	18	1:30a	NNW
26	68.6	86.1	3:15p	56.5	4:15a		6.3	0.06	6.9	24	6:15a	SSE
27	63.4	80.3	3:45p	53.5	4:30a		1.9	0.58	6.5	25	5:30p	NNW
28	63.3	73.5	4:30p	53.5	3:15a	1.5			8.5	26	10:15p	SSE
29	68.1	78.3	4:15p	59.8	5:45a		4.1		16.2	34	2:00p	SSE
30	70.1	84.1	3:45p	58.6	6:30a		6.3		17.7	39	12:15a	SE
31	68.6	88.0	2:30p	58.7	12:00m		8.3	0.62	10.9	<b>40</b>	6:45p	SSE
--	68.9 <sup>1</sup>	93.2 <sup>3</sup>	16 <sup>th</sup>	49.8 <sup>3</sup>	10 <sup>th</sup>	7.7 <sup>2</sup>	154.8 <sup>2</sup>	4.28 <sup>2</sup>	7.5 <sup>1</sup>	40 <sup>3</sup>	31 <sup>st</sup>	SSE

Footnotes: 1. Average; 2. Sum (total); 3. Max or Min  
Heat Base: 65.0 Cool Base: 65.0  
Method: (High + Low) / 2 (per ¼ hour)

## August

Day	Mean Temp.	High Temp.	High Temp. Time	Low Temp.	Low Temp. Time	Heat Degree Days	Cool Degree Days	Precip.	Average Wind Speed	Peak Wind Speed	Peak Wind Time	Wind Dominant Direction
1	62.7	76.3	12:00p	56.3	6:45a		1.3	0.26	5.0	30	1:15p	SSE
2	63.3	78.5	4:00p	54.4	3:30a		1.4	0.04	4.0	20	10:30a	N
3	60.9	75.3	2:45p	53.8	4:30a	0.4		0.44	6.1	25	10:45p	SSE
4	65.3	75.6	3:30p	57.6	4:00a		1.6		16.6	<b>34</b>	10:30a	SE
5	63.1	82.0	1:15p	56.9	2:45p		4.4	0.60	10.8	31	12:45a	SE
6	61.6	77.2	1:45p	55.9	2:00a		1.6	0.45	4.6	19	9:30p	SSE
7	67.5	81.1	2:00p	58.9	4:30a		5.0	0.04	7.7	28	3:15p	SSE
8	68.7	85.1	12:45p	60.7	5:15a		7.9		10.7	28	4:15a	SSE
9	69.5	86.3	12:30p	58.3	12:00m		7.3	0.03	5.4	22	1:30a	SSE
10	71.3	84.5	4:45p	55.1	2:45a		4.8		6.9	24	8:30p	SSE
11	68.5	<b>86.5</b>	2:15p	52.0	6:30a		4.3		7.1	31	7:45p	SSE
12	69.3	82.6	3:15p	54.2	6:45a		3.4		8.6	31	12:00p	SSE
13	62.5	79.4	12:30p	54.2	5:30a		1.8	0.25	2.9	21	1:00p	NNW
14	60.4	72.5	3:15p	53.6	4:30a	2.0			2.4	17	4:30p	NNW
15	62.8	79.9	3:00p	50.7	5:15a		0.3	0.06	4.5	22	10:00p	ESE
16	67.5	82.4	2:45p	57.3	12:15a		4.8		7.7	25	8:45p	SSE
17	66.1	82.6	1:30p	52.8	6:15a		2.7	0.02	5.9	20	2:30p	SSE
18	63.2	83.6	2:00p	51.6	6:45a		2.6	1.32	3.5	24	4:30p	NNW
19	59.3	71.3	1:00p	54.2	6:15a	2.3		0.15	2.8	18	5:30p	NNW
20	61.7	71.3	5:15p	54.7	12:30a	2.0			11.6	33	12:45p	SSE
21	63.0	74.9	1:45p	51.9	7:00a	1.6			4.4	18	12:30p	N
22	65.3	81.6	3:00p	52.0	7:00a		1.8		4.8	19	5:15p	SE
23	70.2	85.3	2:45p	53.5	6:00a		4.4		4.8	16	3:30a	SSE
24	68.0	85.9	1:30p	53.8	4:15a		4.8	0.03	4.6	21	4:45p	N
25	60.9	73.7	2:15p	55.9	7:15a	0.2		0.24	2.5	18	5:15p	NNW
26	56.5	66.1	4:15p	52.3	11:30a	5.8		0.63	4.7	22	7:00p	NNW
27	60.1	73.2	3:00p	51.6	6:00a	2.6		0.02	5.5	25	8:45a	N
28	59.4	70.9	4:15p	<b>46.0</b>	7:00a	6.5			4.0	20	3:15p	N
29	61.4	73.0	2:45p	52.5	4:45a	2.3		0.02	12.0	26	9:00a	SE
30	68.7	83.3	2:15p	56.5	5:45a		4.9		10.9	31	1:30a	SSE
31	69.0	84.5	1:00p	53.1	6:30a		3.8		7.2	29	12:45a	SSE
--	64.4 <sup>1</sup>	86.5 <sup>3</sup>	11 <sup>th</sup>	46.0 <sup>3</sup>	28 <sup>th</sup>	25.6 <sup>2</sup>	75.0 <sup>2</sup>	4.60 <sup>2</sup>	6.5 <sup>1</sup>	34 <sup>3</sup>	4 <sup>th</sup>	SSE

Footnotes: 1. Average; 2. Sum (total); 3. Max or Min  
 Heat Base: 65.0 Cool Base: 65.0  
 Method: (High + Low) / 2 (per ¼ hour)

## September

Day	Mean Temp.	High Temp.	High Temp. Time	Low Temp.	Low Temp. Time	Heat Degree Days	Cool Degree Days	Precip.	Average Wind Speed	Peak Wind Speed	Peak Wind Time	Wind Dominant Direction
1	57.8	75.6	12:45p	48.8	12:00m	2.8		0.03	5.1	29	3:45p	NNW
2	50.4	60.9	3:30p	43.3	5:45a	12.9		0.12	3.3	20	12:15a	NNW
3	56.4	68.4	2:15p	47.3	1:30a	7.2		0.03	7.1	26	6:45a	SSE
4	59.0	73.2	4:15p	47.7	1:45a	4.6			6.1	28	11:00p	SSE
5	61.6	75.8	4:15p	53.2	3:30a	0.5			7.9	20	5:45a	SSE
6	57.2	75.4	1:00p	47.1	7:00a	3.8		0.14	5.8	27	2:30a	SSE
7	56.0	73.2	12:15p	45.2	7:30a	5.8		0.02	6.3	33	3:45p	SSE
8	54.4	63.7	11:15a	44.8	6:15a	10.8		0.19	7.1	32	5:45p	SE
9	59.7	76.3	3:15p	44.1	7:15a	4.8			3.8	18	12:45a	SSE
10	55.9	72.8	1:15p	42.2	6:45a	7.5		0.52	3.1	19	7:30p	NNW
11	55.9	72.8	1:15p	41.8	6:15a	7.7		0.10	2.4	25	11:30p	ESE
12	56.4	71.1	2:30p	43.3	7:15a	7.8		0.05	4.0	19	3:45p	NNW
13	63.3	<b>79.9</b>	1:45p	47.0	3:30a	1.5			7.8	26	9:15p	SSE
14	61.6	73.0	2:30p	53.9	6:30a	1.5			14.9	<b>38</b>	3:00p	SSE
15	62.9	72.5	3:15p	54.5	7:00a	1.5			12.5	33	4:00p	S
16	63.3	76.1	3:00p	46.4	12:00m	3.8			8.1	33	9:45a	SE
17	46.5	60.7	2:30p	29.7	7:00a	19.8			6.9	36	6:00p	SE
18	49.0	66.4	4:00p	29.1	6:45a	17.3			3.6	19	11:15p	SSE
19	59.7	72.5	4:45p	48.0	5:15a	4.8			11.9	25	1:30a	SSE
20	61.1	75.4	2:45p	47.1	10:45p	3.8		0.12	8.8	27	4:15p	SSE
21	50.9	64.7	4:45p	40.9	6:30a	12.2		0.11	4.7	27	6:15a	WNW
22	45.5	55.6	9:45a	36.5	12:00m	19.0			4.7	19	6:15a	NNW
23	41.9	55.0	1:30p	28.4	5:45a	23.3			3.9	21	11:00a	N
24	45.0	60.7	3:30p	<b>27.8</b>	5:15a	20.8			6.4	28	11:15p	SE
25	52.0	69.3	3:45p	32.4	7:00a	14.1			4.1	24	12:15a	NNW
26	54.9	73.0	4:45p	35.8	6:30a	10.6			2.8	24	3:00p	ESE
27	56.9	73.9	3:00p	41.1	6:00a	7.5			3.8	22	8:30p	ESE
28	55.5	71.1	2:30p	41.1	3:15a	8.9			12.4	29	7:45p	SSE
29	61.8	78.3	4:15p	41.6	6:30a	5.0			5.7	20	12:45a	NNW
30	61.3	76.8	1:45p	41.8	7:00a	5.7			8.6	34	3:45p	SE
--	55.8 <sup>1</sup>	79.9 <sup>3</sup>	13 <sup>th</sup>	27.8 <sup>3</sup>	24 <sup>th</sup>	257.0 <sup>2</sup>	<sup>2</sup>	1.43 <sup>2</sup>	6.5 <sup>1</sup>	38 <sup>3</sup>	14 <sup>th</sup>	SSE

Footnotes: 1. Average; 2. Sum (total); 3. Max or Min  
 Heat Base: 65.0 Cool Base: 65.0  
 Method: (High + Low) / 2 (per ¼ hour)

## October

Day	Mean Temp.	High Temp.	High Temp. Time	Low Temp.	Low Temp. Time	Heat Degree Days	Cool Degree Days	Precip.	Average Wind Speed	Peak Wind Speed	Peak Wind Time	Wind Dominant Direction
1	63.1	82.0	2:30p	44.1	4:45a	2.0			5.0	21	3:30p	ESE
2	65.3	<b>83.2</b>	3:15p	47.3	7:00a		0.3		6.5	19	4:45p	SE
3	64.0	77.2	2:45p	49.6	12:00m	1.6			6.5	25	5:15a	SSE
4	55.2	70.9	3:15p	38.6	7:15a	10.3			9.2	36	8:30p	SE
5	60.2	73.0	3:00p	51.1	6:45a	3.0			18.9	41	12:15p	SE
6	59.9	68.1	3:00p	51.7	7:15a	5.1			20.0	<b>53</b>	2:00p	SSE
7	58.4	69.8	12:45p	50.1	6:15a	5.0			17.0	47	2:15p	SE
8	45.5	56.3	4:45a	38.9	7:30p	17.4		0.55	6.0	29	12:15a	NNW
9	37.4	38.9	12:15a	35.3	12:00m	27.9		0.27	1.5	13	8:30a	NNW
10	43.0	62.0	3:45p	32.2	3:15a	17.9		0.05	2.0	16	10:30p	NNW
11	49.8	66.6	3:15p	34.7	3:15a	14.3			3.4	18	1:15a	ESE
12	44.3	60.9	3:00p	34.7	4:30a	17.2			3.7	21	12:30p	SE
13	50.3	67.1	3:00p	32.4	7:45a	15.3			5.5	31	11:00p	SSE
14	54.8	67.6	11:00a	45.4	8:30a	8.5			13.6	38	2:30p	SSE
15	51.7	63.1	4:00p	41.8	11:15p	12.6			5.8	30	12:45a	SSE
16	51.4	68.9	3:45p	34.9	5:15a	13.1			4.3	20	11:15p	SSE
17	48.2	64.2	3:15p	32.4	7:00a	16.7			5.8	34	3:45p	SE
18	30.6	34.9	11:15p	26.3	7:45a	34.4			3.5	17	2:30p	NNW
19	42.1	56.2	2:00p	27.8	7:00a	23.0			8.1	24	11:30p	SE
20	49.8	66.4	12:45p	34.9	7:45a	14.3			7.8	26	12:15a	SSE
21	31.2	38.0	12:15a	27.3	8:00a	32.3		0.20	4.0	26	6:15a	NNW
22	37.0	51.9	2:30p	28.7	3:30a	24.7			7.2	30	9:15a	SSE
23	49.3	66.1	2:00p	29.1	6:15a	17.4			11.4	31	11:30a	SSE
24	48.2	61.5	3:15p	36.6	11:45p	16.0			3.6	16	12:30a	NNW
25	50.4	64.8	12:15p	34.3	6:15a	15.4			5.9	29	8:15p	ESE
26	34.7	47.4	12:30a	28.7	11:00p	26.9		0.70	6.2	29	4:30p	NNW
27	36.8	50.8	5:00p	<b>20.0</b>	7:15a	29.6		0.20	4.2	19	9:00p	NNW
28	51.0	70.1	2:15p	32.8	2:15a	13.6			6.0	19	2:30a	SE
29	53.9	69.1	10:45a	34.7	5:45a	13.1			5.6	17	1:00a	SSE
30	49.2	63.4	12:00p	29.8	12:00m	18.4			4.4	22	9:30p	WNW
31	33.4	42.9	3:00p	24.8	5:45a	31.2			11.9	13	9:00a	SE
--	48.4 <sup>1</sup>	83.2 <sup>3</sup>	2 <sup>nd</sup>	20.0 <sup>3</sup>	27 <sup>th</sup>	498.1 <sup>2</sup>	0.3 <sup>2</sup>	1.97 <sup>2</sup>	7.2 <sup>1</sup>	53 <sup>3</sup>	6 <sup>th</sup>	SSE

Footnotes: 1. Average; 2. Sum (total); 3. Max or Min • 27<sup>th</sup>: 8:00am: About 10" of snow since yesterday pm.  
 Heat Base: 65.0 Cool Base: 65.0  
 Method: (High + Low) / 2 (per ¼ hour)

## November

Day	Mean Temp.	High Temp.	High Temp. Time	Low Temp.	Low Temp. Time	Heat Degree Days	Cool Degree Days	Precip.	Average Wind Speed	Peak Wind Speed	Peak Wind Time	Wind Dominant Direction
1	30.7	41.2	2:15p	19.7	6:45a	34.5			6.4	39	11:00p	NNW
2	41.8	57.8	2:00p	28.4	3:45a	21.9			13.8	38	12:45a	SSE
3	50.2	67.3	12:45p	38.3	9:00p	12.2			8.3	25	12:30a	SSE
4	45.3	58.4	2:15p	31.2	6:30a	20.2			2.2	20	4:00p	NNW
5	43.2	60.1	1:45p	28.5	6:45a	20.7			2.5	13	8:15p	ESE
6	46.7	62.4	2:00p	31.9	7:15a	17.8			5.4	22	5:15p	NNW
7	54.0	71.8	2:00p	33.4	4:15a	12.4			6.2	24	7:15a	SSE
8	60.6	<b>77.9</b>	12:45p	44.2	4:30a	3.9			7.2	22	7:15a	SE
9	52.1	64.5	2:30p	34.9	12:00m	15.3			5.0	21	7:30p	NNW
10	35.2	45.7	1:15p	26.9	6:30a	28.7			4.7	29	11:00p	NNW
11	42.5	59.5	3:15p	31.5	5:15a	19.5		0.22	19.8	39	11:30a	SSE
12	37.5	53.9	10:45a	29.1	10:15p	23.5			8.1	36	2:15a	NNW
13	36.3	53.2	12:30p	26.9	3:45a	25.0			12.3	<b>44</b>	6:30a	SE
14	40.7	53.3	11:45a	26.4	12:00m	25.2			9.7	32	5:00a	WNW
15	31.5	43.1	2:00p	20.5	7:15a	33.2			6.7	26	9:15a	NNW
16	48.5	66.6	1:45p	29.7	7:00a	16.8			7.0	25	1:45p	SSE
17	43.3	54.2	1:15p	28.7	5:45a	23.5			7.9	37	10:30p	SE
18	44.6	60.2	12:00p	32.8	11:00p	18.5			8.4	35	12:30a	NNW
19	38.7	54.3	12:00p	24.7	5:30a	25.5			2.2	19	5:15p	ESE
20	45.8	55.6	3:00p	34.7	7:00a	19.8			19.8	<b>44</b>	7:00a	SSE
21	52.6	69.1	1:45p	35.5	5:30a	12.7			9.6	28	3:30p	SSE
22	48.3	63.4	1:45p	32.9	7:00a	16.8			6.2	24	12:15p	ESE
23	55.4	71.6	1:45p	43.3	11:30p	7.6			10.3	29	1:05a	SSE
24	42.0	53.5	12:45p	32.9	7:30a	21.8			10.2	33	6:45p	SE
25	44.3	59.3	2:00p	34.1	4:00a	18.3			9.9	32	12:45a	SSE
26	45.1	56.6	1:45p	35.9	12:00m	18.8			8.1	24	9:45a	SSE
27	42.7	53.6	1:45p	34.6	6:00a	20.9			12.2	32	12:00p	SSE
28	40.6	51.4	12:30p	21.9	12:00m	28.3			9.8	32	5:30a	S
29	13.6	21.9	12:15a	6.5	10:30p	50.8		0.35	7.7	24	5:45a	NNW
30	16.3	30.1	2:15p	<b>-3.7</b>	7:15a	51.8			2.8	16	7:45p	NNW
--	42.3 <sup>1</sup>	77.9 <sup>3</sup>	8 <sup>th</sup>	-3.7 <sup>3</sup>	30 <sup>th</sup>	666.1 <sup>2</sup>	<sup>2</sup>	0.57 <sup>2</sup>	8.3 <sup>1</sup>	44 <sup>3</sup>	13 <sup>th</sup>	SSE

Footnotes: 1. Average; 2. Sum (total); 3. Max or Min  
 Heat Base: 65.0 Cool Base: 65.0  
 Method: (High + Low) / 2 (per ¼ hour)

- 30<sup>th</sup>: About 6" of the white stuff yesterday...and COLD!! Below zero this morning.

## December

Day	Mean Temp.	High Temp.	High Temp. Time	Low Temp.	Low Temp. Time	Heat Degree Days	Cool Degree Days	Precip.	Average Wind Speed	Peak Wind Speed	Peak Wind Time	Wind Dominant Direction
1	29.0	44.1	10:15a	18.8	10:30p	33.6			4.6	18	9:00a	NNW
2	17.3	22.4	12:15p	6.0	11:45a	50.8		0.10	2.3	16	4:00a	NNW
3	20.8	32.9	1:15p	<b>2.8</b>	12:45a	47.1			10.7	27	4:30p	SSE
4	36.6	50.8	10:15a	18.8	1:30a	30.2			6.1	28	9:45p	ESE
5	43.1	60.2	11:30a	28.7	5:30a	20.5			6.3	22	12:30a	SSE
6	34.6	50.2	12:00p	20.5	6:45a	29.7			7.8	29	2:30p	NNW
7	25.3	28.5	2:45p	20.3	3:45a	40.6			10.1	<b>35</b>	12:30p	SSE
8	40.2	58.7	11:30a	25.1	2:45a	23.1			9.3	27	7:30p	SSE
9	43.0	61.5	12:15p	27.9	11:00p	20.3			7.8	22	7:30a	SSE
10	38.8	53.5	2:30p	27.2	3:30a	24.7			5.5	25	11:00p	ESE
11	31.8	39.2	2:45p	25.0	11:30p	32.9			4.5	20	1:00a	NNW
12	35.8	56.2	1:45p	20.8	2:15a	26.5			6.1	18	1:30a	ESE
13	40.5	56.6	2:30p	27.0	7:15a	23.2			6.8	24	4:00p	ESE
14	44.1	58.3	12:30p	33.8	10:15p	19.0			5.4	19	12:45p	ESE
15	46.6	58.7	3:15p	30.0	2:15a	20.7			10.5	31	9:30a	SSE
16	48.6	<b>62.0</b>	1:45p	26.1	12:00m	21.0			8.1	27	8:15a	SSE
17	27.0	39.5	10:15a	19.1	12:00m	35.7			2.4	18	9:00a	WNW
18	19.8	22.9	12:30p	14.8	4:30a	46.1		0.04	1.5	12	3:45p	NNW
19	25.0	33.8	2:00p	21.4	4:30a	37.4		0.10	2.6	21	12:15p	NW
20	20.1	23.9	1:45a	16.4	12:00m	44.9		0.60	7.7	34	3:00p	NNW
21	19.6	28.2	2:00p	13.5	10:00p	44.1		0.40	2.3	15	1:00a	NNW
22	27.1	43.1	1:45p	14.9	1:15a	36.0			3.8	28	2:15p	SE
23	24.9	37.5	12:15p	9.5	6:45a	41.5			7.2	33	8:45p	SSE
24	27.9	45.4	10:45a	16.1	3:45a	34.3			7.3	31	1:45p	N
25	28.3	48.0	3:00p	7.4	7:45a	37.3			2.3	14	11:15p	NNW
26	41.9	55.0	10:30a	28.7	12:15a	23.2			11.2	31	1:30p	SSE
27	45.6	57.8	12:15p	35.0	6:15a	18.6			9.8	25	12:15a	SSE
28	29.0	42.1	1:30a	23.2	12:00m	32.3		0.09	5.0	26	12:00p	NNW
29	18.9	23.2	12:15a	17.3	7:30p	44.8		0.95	10.3	34	10:30p	NNW
30	20.5	24.5	4:15p	15.2	12:00m	45.1		2.42	7.1	30	12:30a	NNW
31	19.9	31.8	1:00p	10.5	9:30p	43.9			3.3	25	11:45p	NNW
--	31.3 <sup>1</sup>	62.0 <sup>3</sup>	16 <sup>th</sup>	2.8 <sup>3</sup>	3 <sup>rd</sup>	1,028.9 <sup>2</sup>	<sup>2</sup>	4.70 <sup>2</sup>	6.3 <sup>1</sup>	35 <sup>3</sup>	7 <sup>th</sup>	SSE

Footnotes: 1. Average; 2. Sum (total); 3. Max or Min  
 Heat Base: 65.0 Cool Base: 65.0  
 Method: (High + Low) / 2 (per ¼ hour)

- 19th: 1.5" of snow yesterday and last night.
- 20th: 8:00am: About 5" of blowing snow.
- 21st: 12"-13" of snow yesterday and last night with drifts of 2 to 3 feet. I-25 was closed yesterday from WY to NM.
- 29th: Another 12" of snow yesterday and last night.
- 30th: At least 14" more of wet snow! Boy, are we snowed in for a while!
- 31st: 9.5" of snow yesterday for a total of 36.5" from this snowstorm. A total of 4.27" of precipitation in the last 3 days. A beautiful, clear, and sunny day right now.