



Santa Fe Trail Ranch

Climatological Data
for

2010

The climatological data in this document represents a compilation of the Weather Stats pages from the original Santa Fe Trail Ranch web site and continuing data collection since moving to the new SFTR web site.

Until April 2012, longtime resident Walt Wolff collected and posted daily weather data. But the wintery weather and work associated with maintaining the beautiful Loma Lobo property caused Joyce and Walt to switch to part-time status. Walt gave Robert L. Scott the weather equipment and Bob posted the weather updates until his equipment failed in January 2018. Since then, the data has come from the StargateCOlorado weather station (same type of equipment that Walt/Bob used) maintained by Ernie Parker / Sharon Sorenson.

The data is broken into two sections: the charts in the first section are a synopsis of the weather on the Ranch. For more detailed data (and an aid to help you sleep!), see the monthly climatological tables in the second section.

Notes:

- The StargateCOlorado weather station is at the south end of the Ranch and at a higher elevation than the station maintained by Walt Wolff & Bob Scott. As a result, you will find that, on average, the temperature readings will be slightly lower, and the precipitation readings will be slightly higher than those reported by Bob/Walt's stations.
- The data shown on the various pages starts at a high level and gets more detailed the further down you go.
 - The highest-level charts show the precipitation, snow, temperature, and winds for the entire year.
 - The middle-level charts show the temperature and winds for each month of the year.
 - The lowest-level tables provide all the data collected by the weather station.
 - The snow data has only been collected since 2015 by Ernie / Sharon and does not come from the weather station.
 - What's the definition of "Mean Temperature"? Unlike most weather information, where the "Average Temperature" is just the average of the highest and lowest temperatures of the day, the weather station captures the temperature every 15 minutes, collecting 96 readings per day. The "Mean Temperature" is the average of all 96 readings, giving you a more accurate value.
- Prior to 2022, the times shown in the climatological tables are based on a 12-hour (AM/PM) clock. Starting in 2022, the times listed are based on a 24-hour clock. The data collection program suddenly switched modes.

Enjoy!!

--Ernie Parker

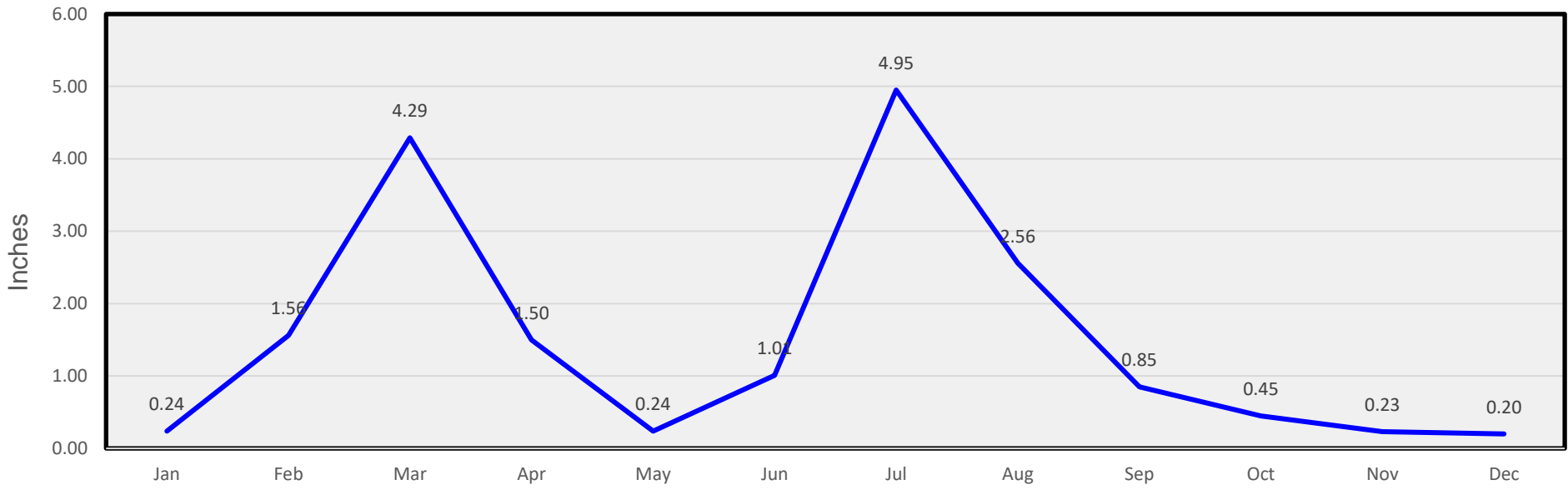
Contents

Charts	5
Monthly Precipitation.....	6
Monthly Snow	6
Monthly Temperatures	7
Monthly Winds	7
January Temperatures.....	8
January Winds	8
February Temperatures	9
February Winds.....	9
March Temperatures.....	10
March Winds	10
April Temperatures	11
April Winds.....	11
May Temperatures.....	12
May Winds	12
June Temperatures.....	13
June Winds	13
July Temperatures	14
July Winds.....	14
August Temperatures	15
August Winds.....	15
September Temperatures.....	16
September Winds	16
October Temperatures.....	17
October Winds	17
November Temperatures.....	18
November Winds	18
December Temperatures.....	19
December Winds	19

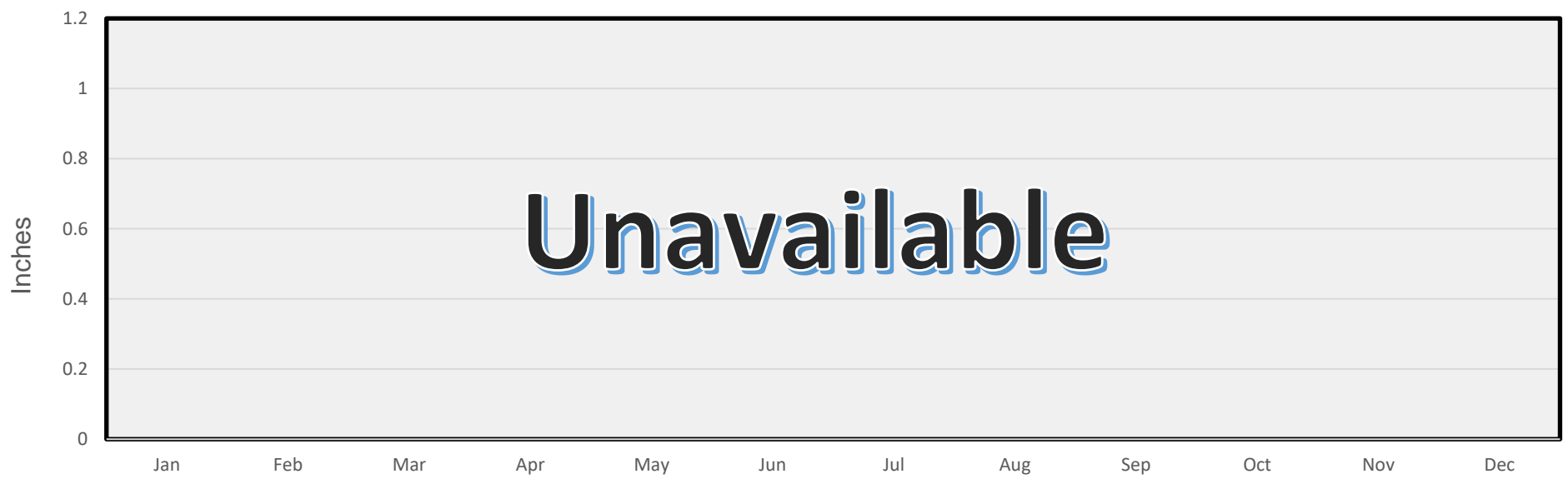
Tables	20
January	21
February	22
March	23
April	24
May	25
June	26
July	27
August	28
September	29
October	30
November	31
December	32

Charts

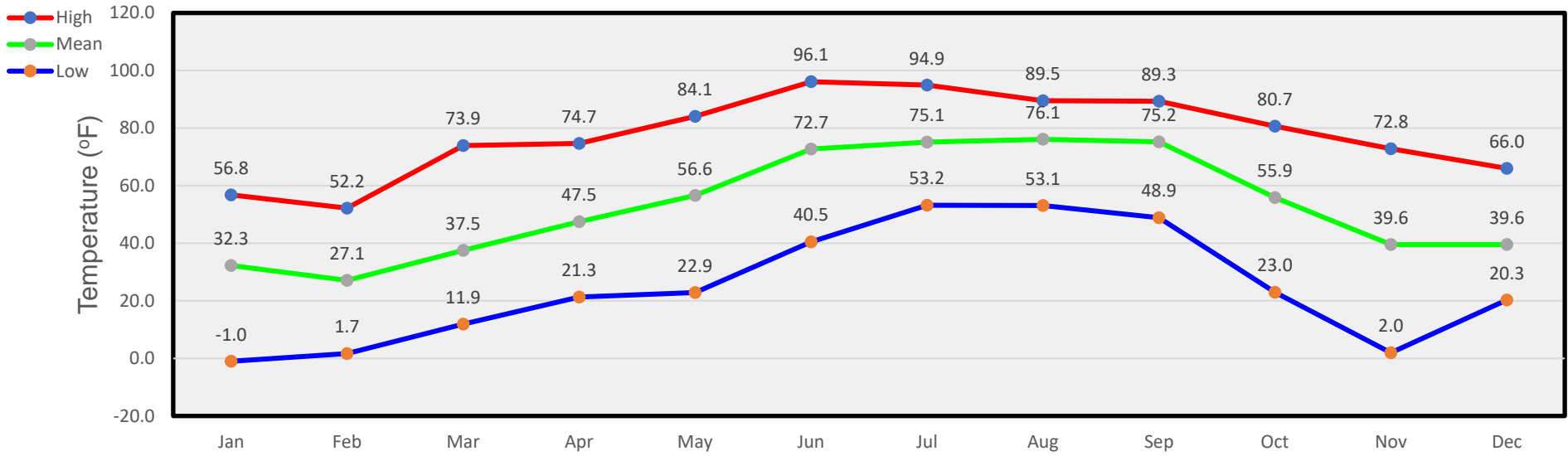
Monthly Precipitation



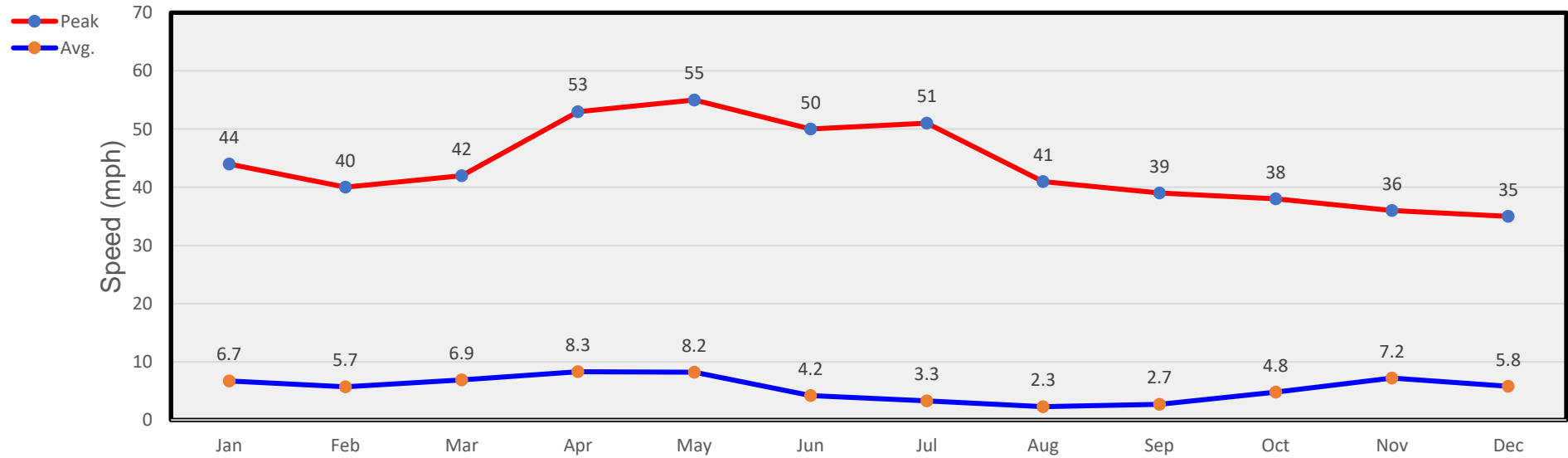
Monthly Snow



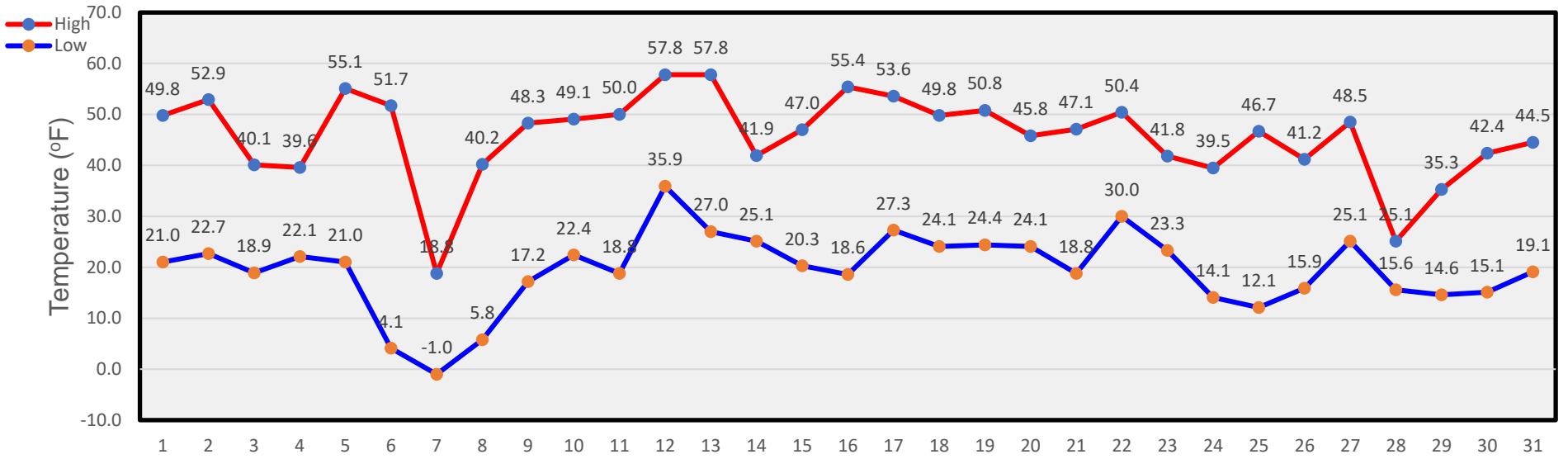
Monthly Temperatures



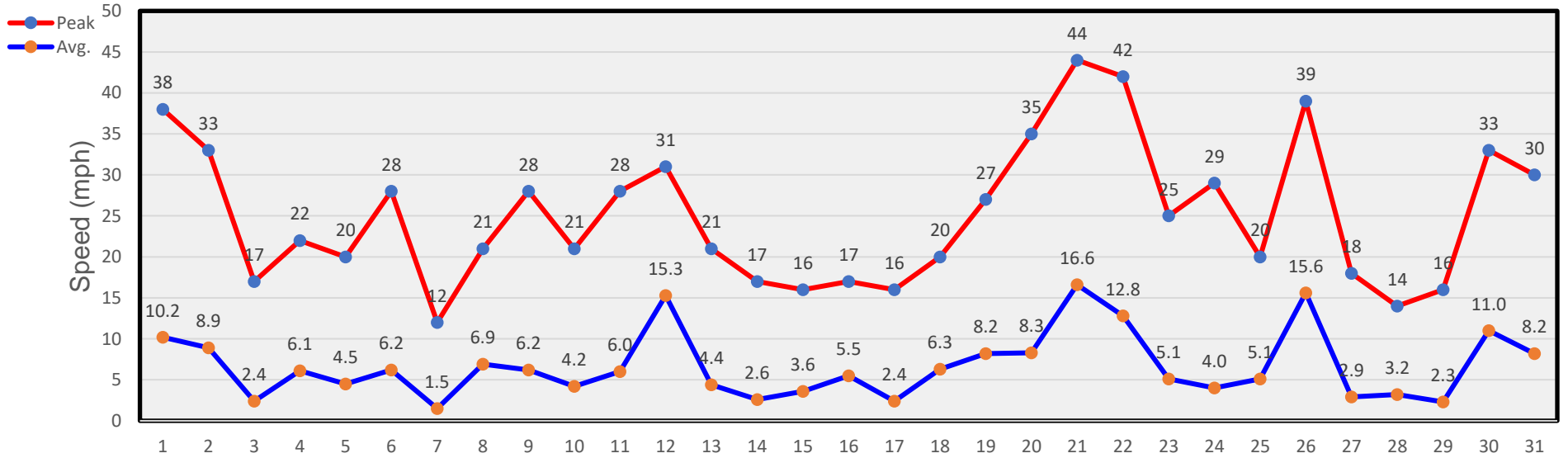
Monthly Winds



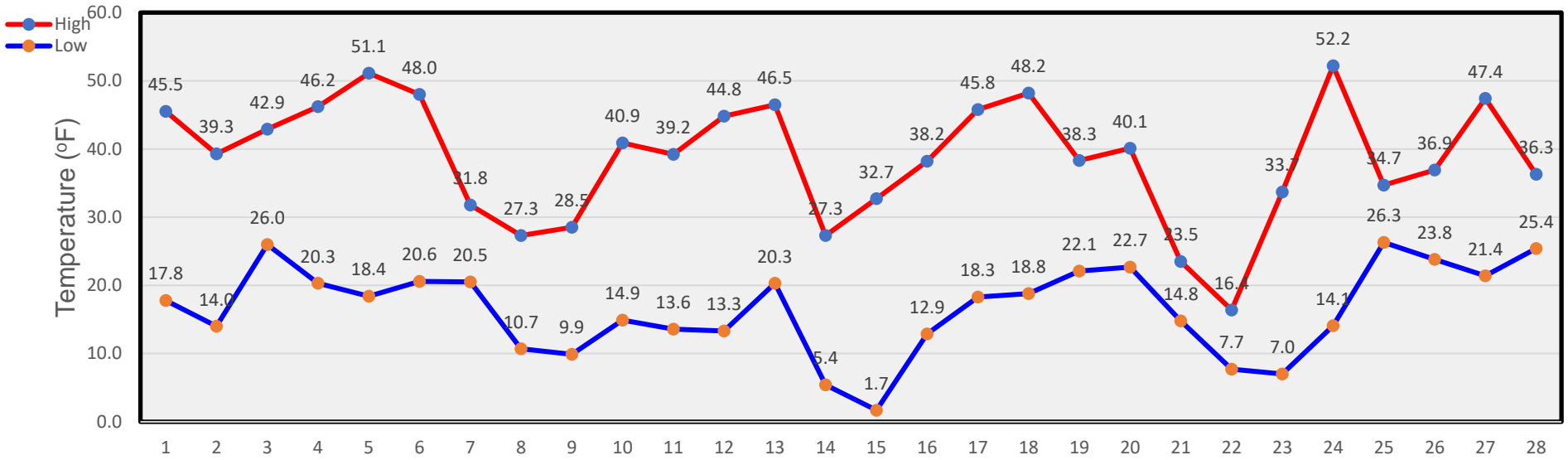
January Temperatures



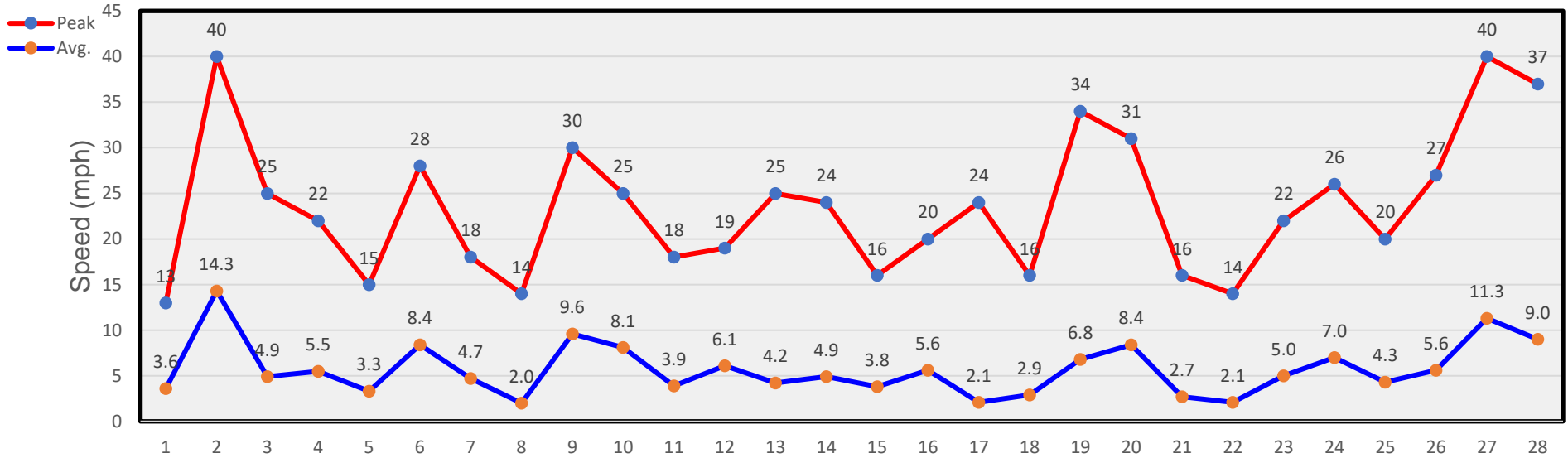
January Winds



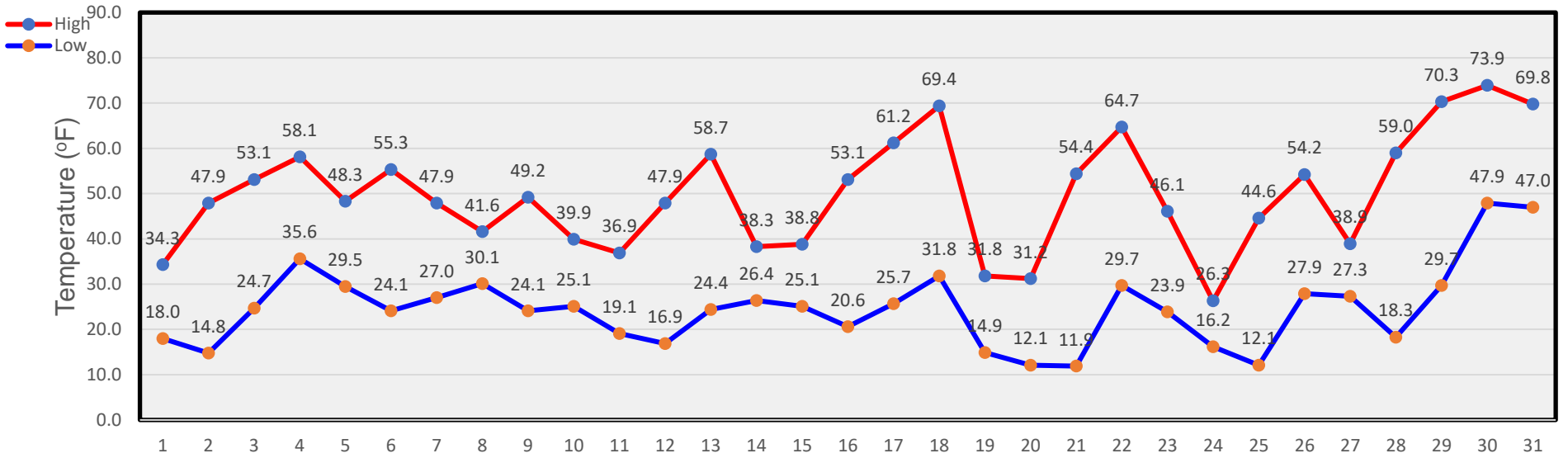
February Temperatures



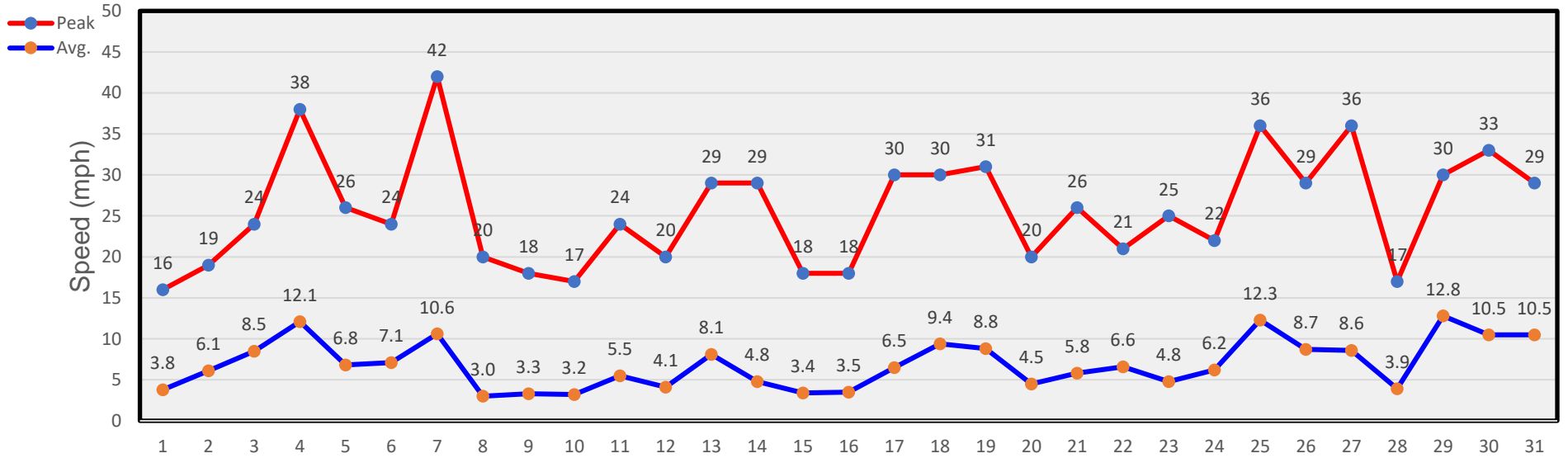
February Winds



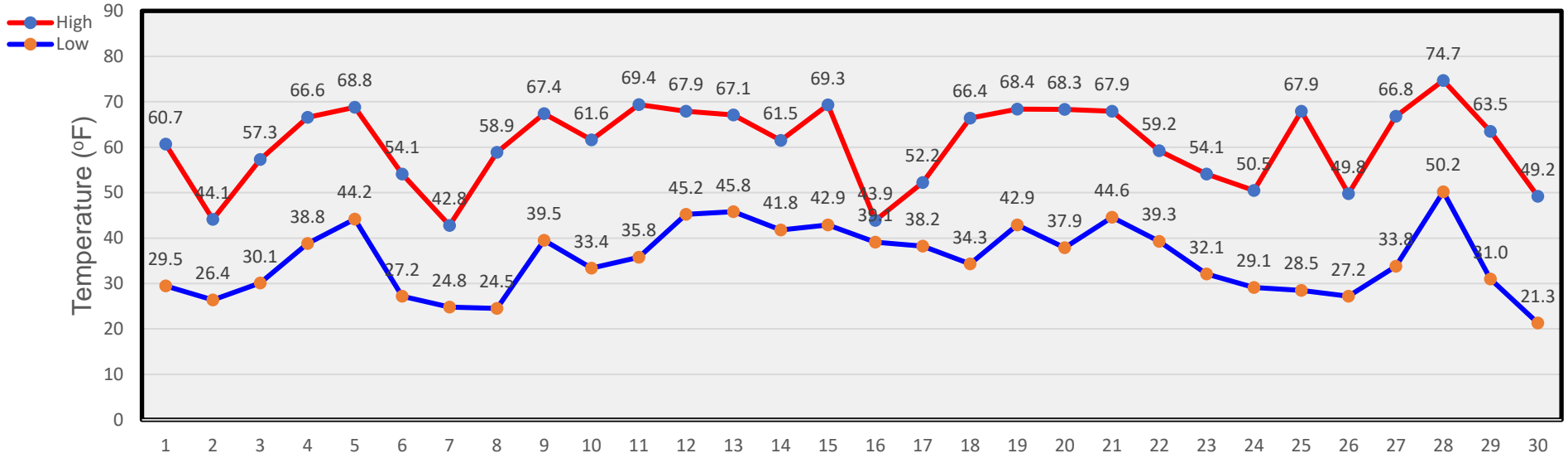
March Temperatures



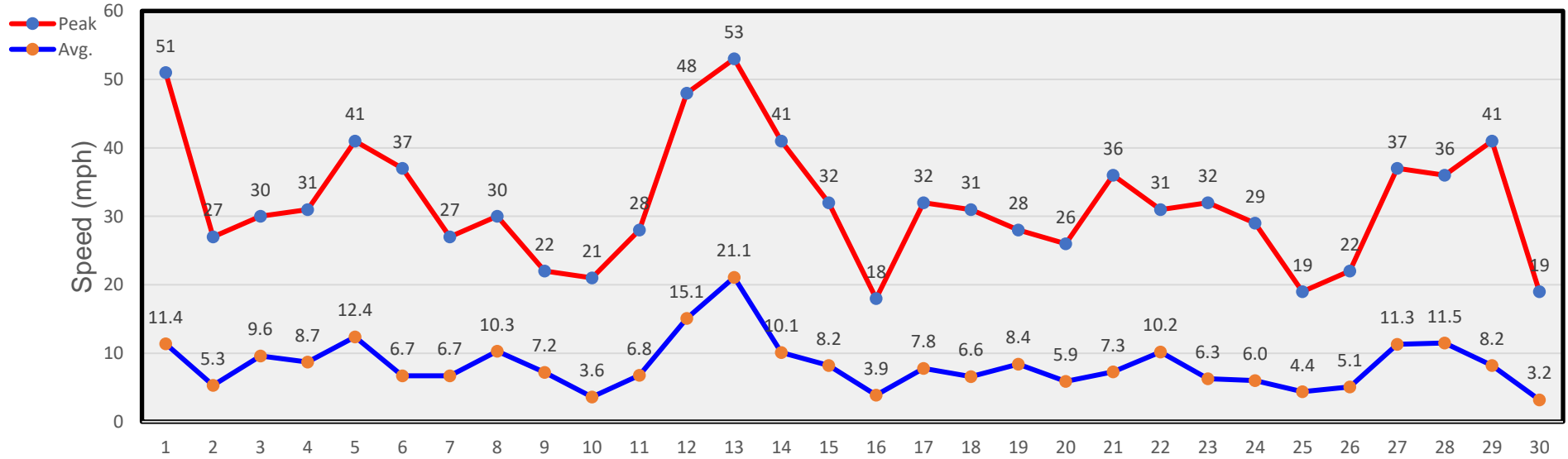
March Winds



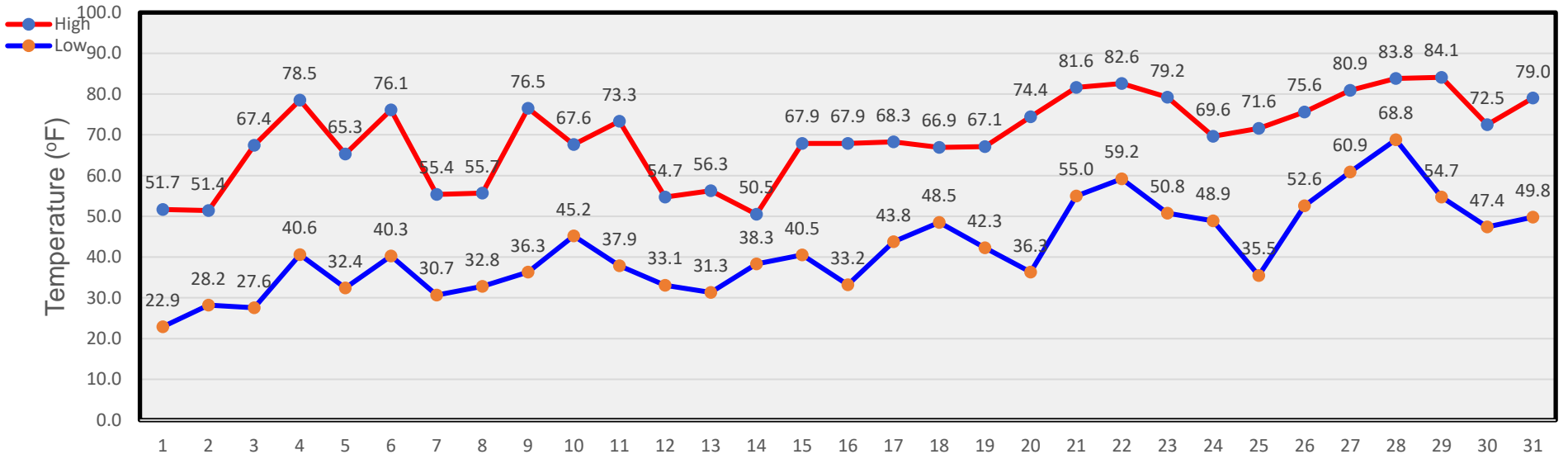
April Temperatures



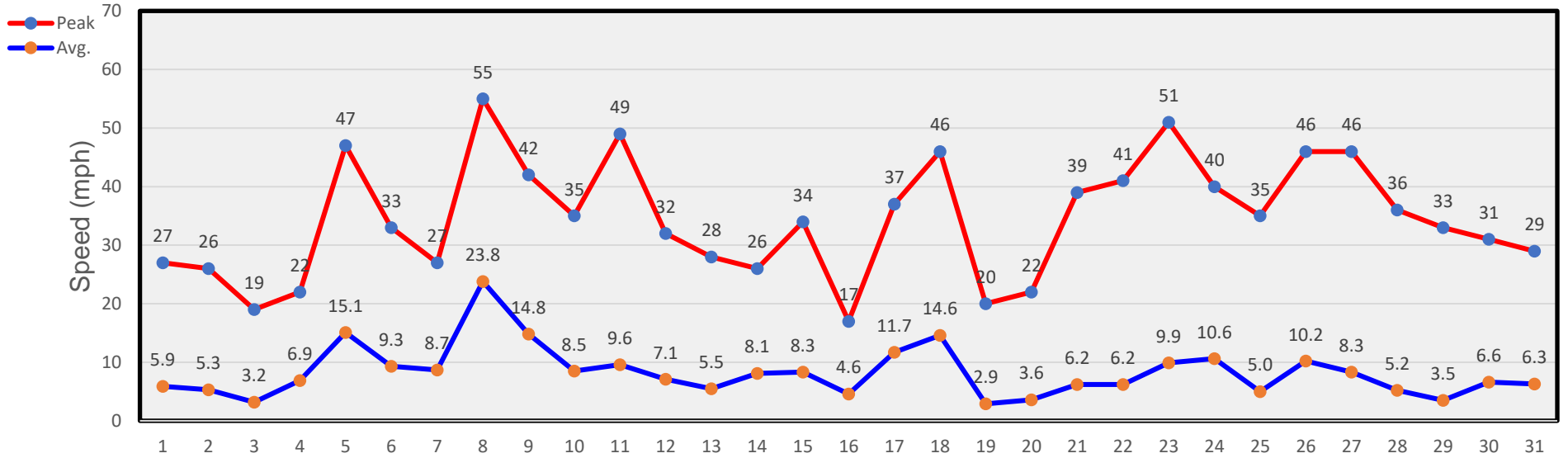
April Winds



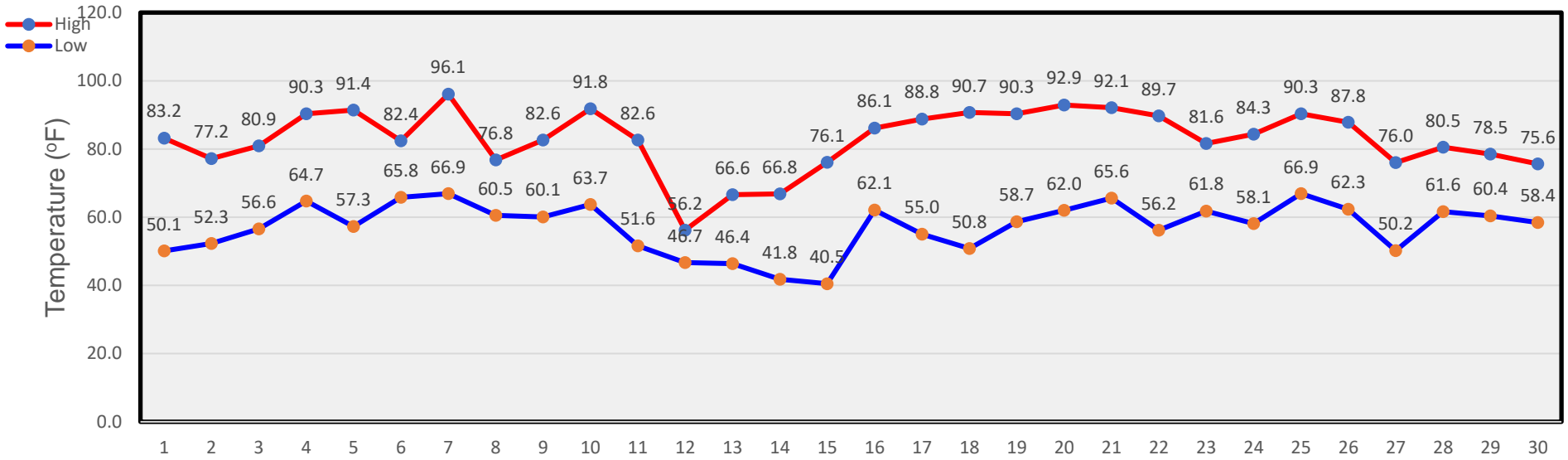
May Temperatures



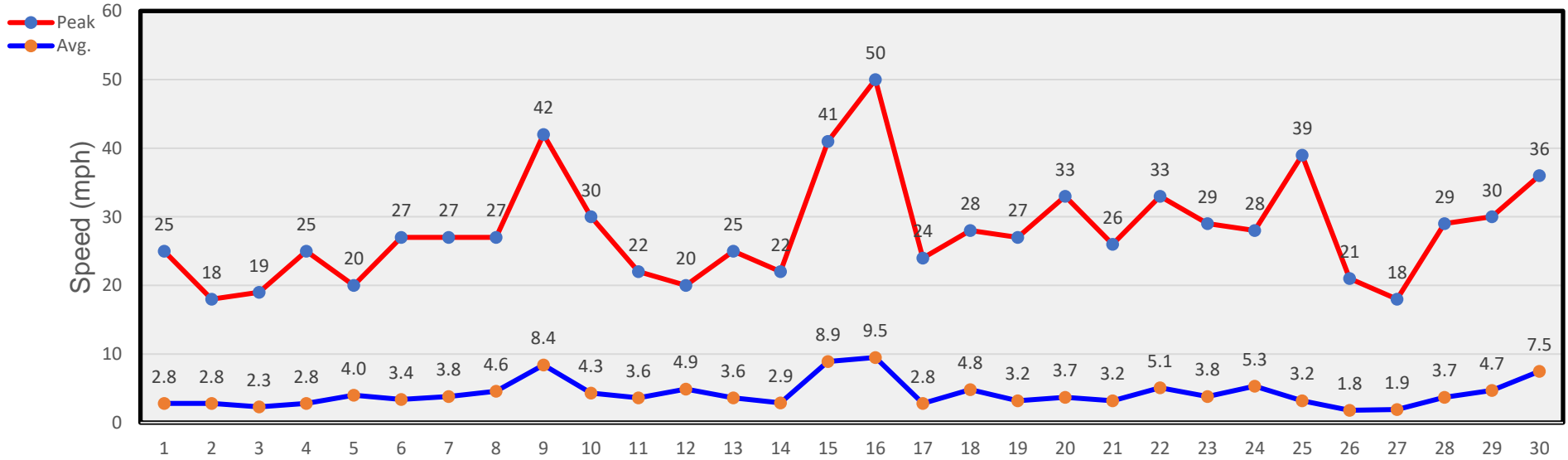
May Winds



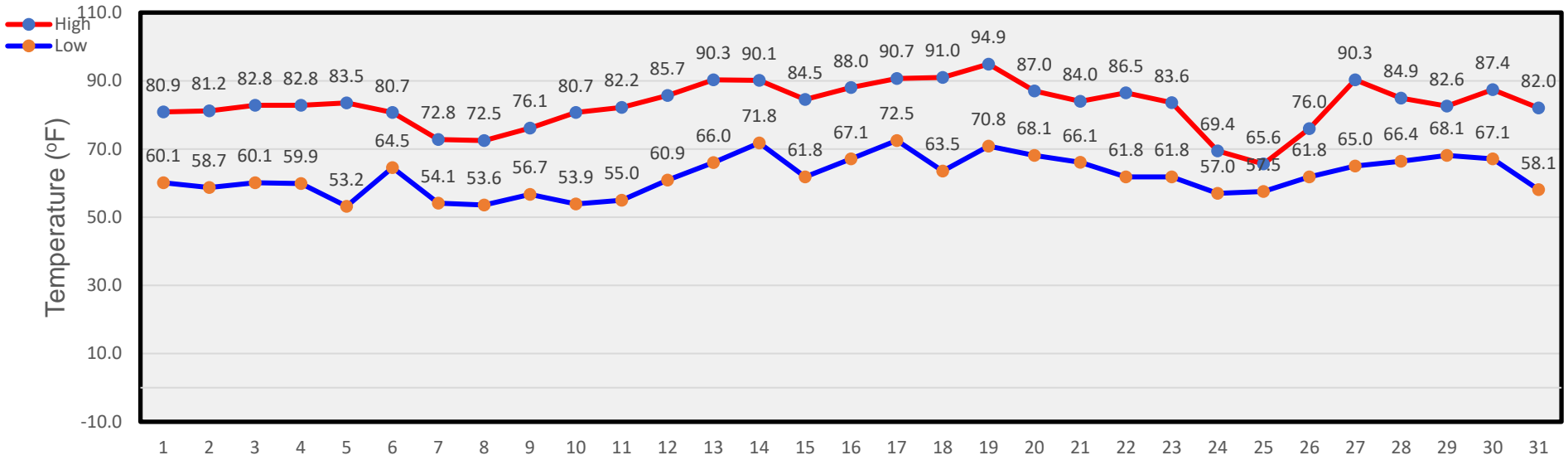
June Temperatures



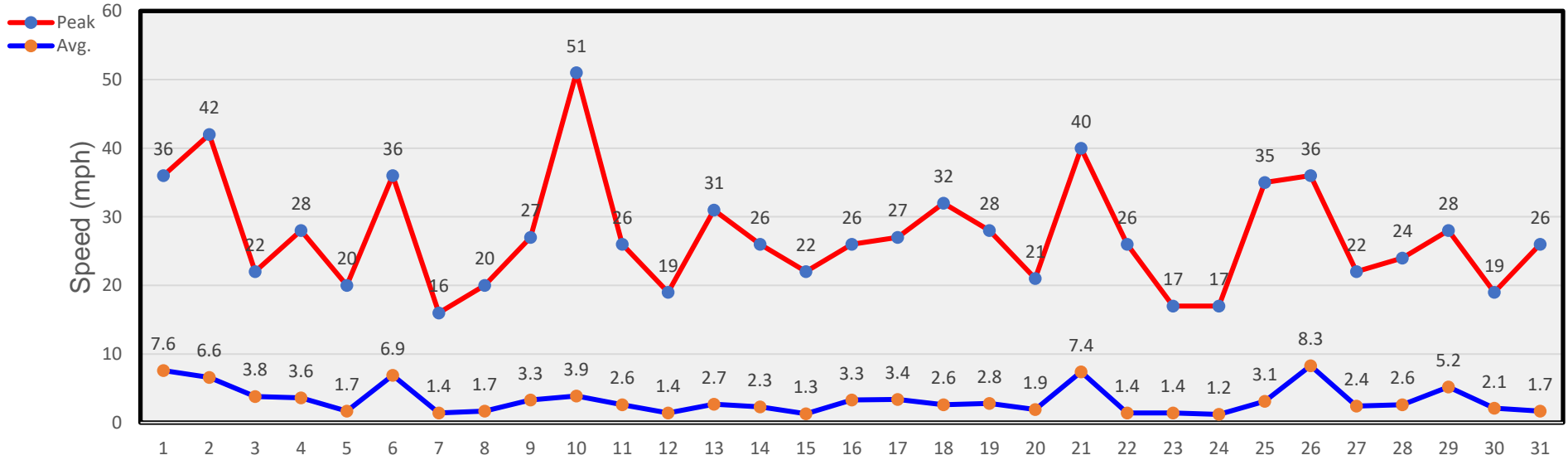
June Winds



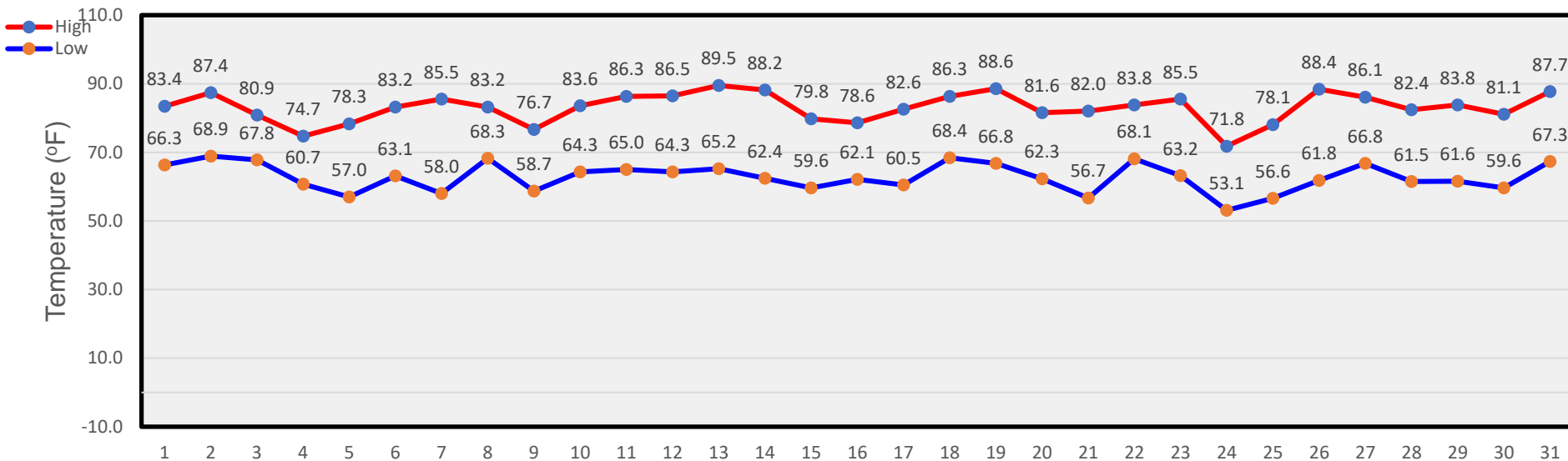
July Temperatures



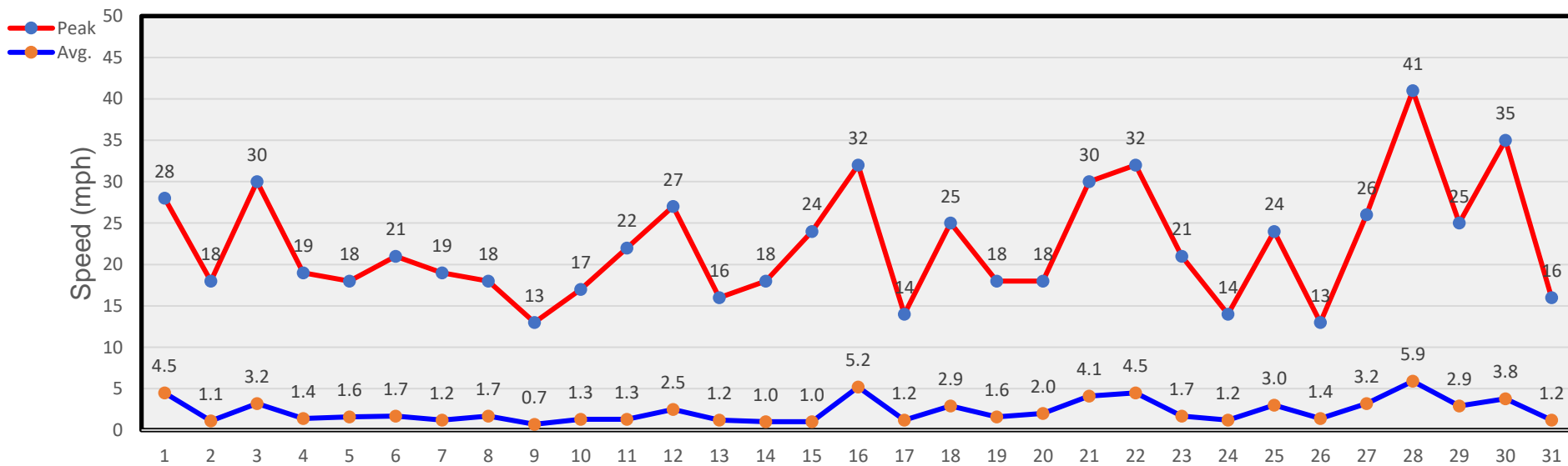
July Winds



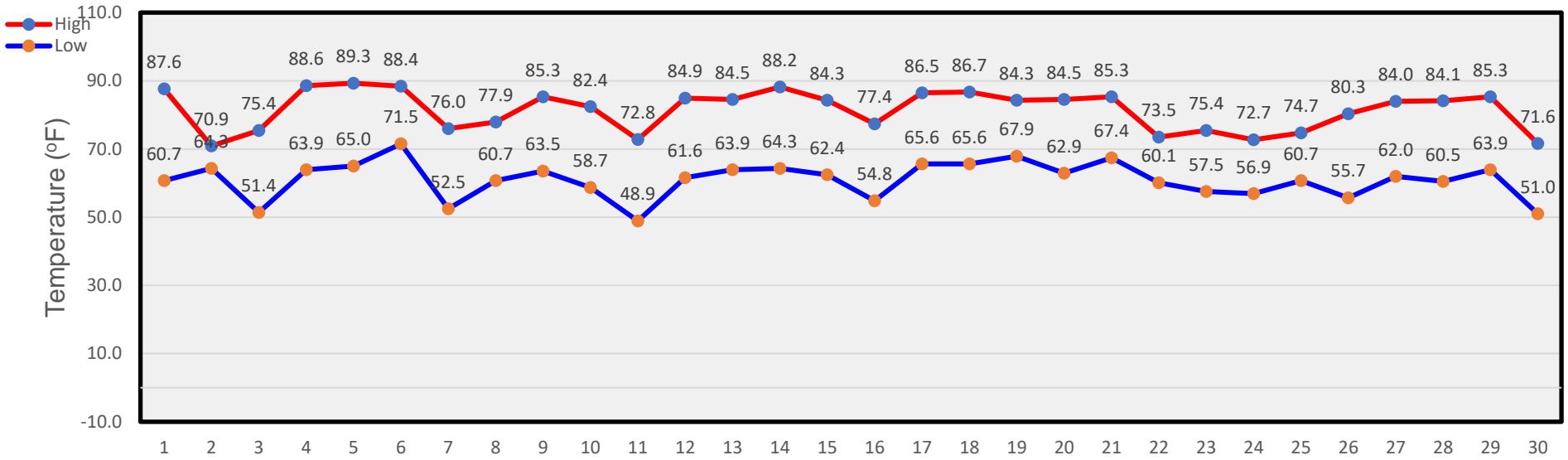
August Temperatures



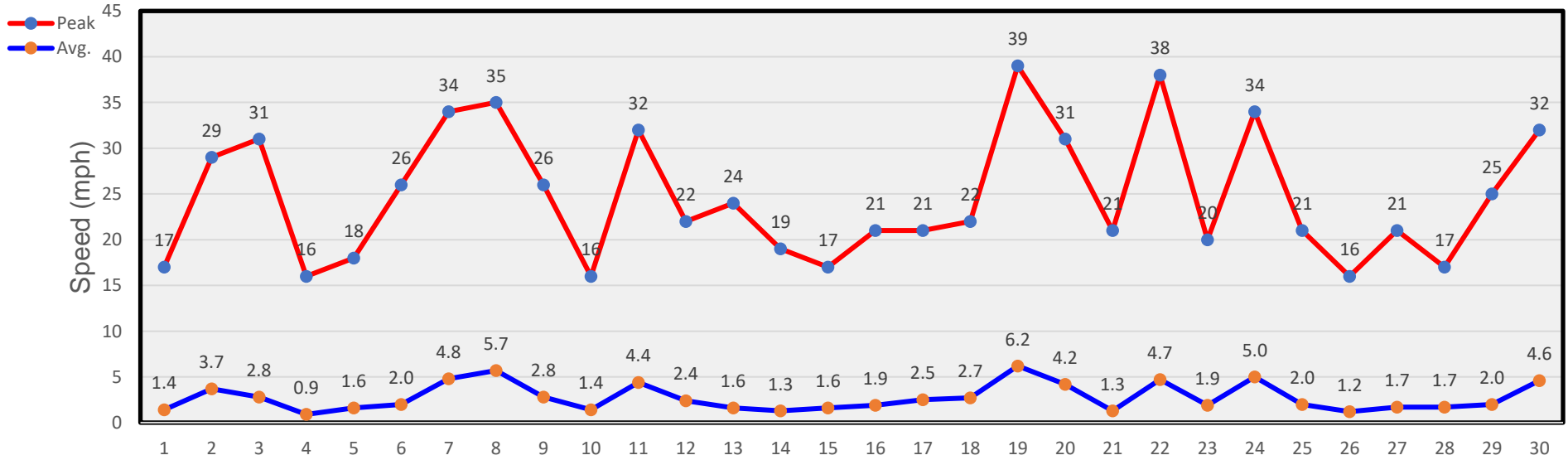
August Winds



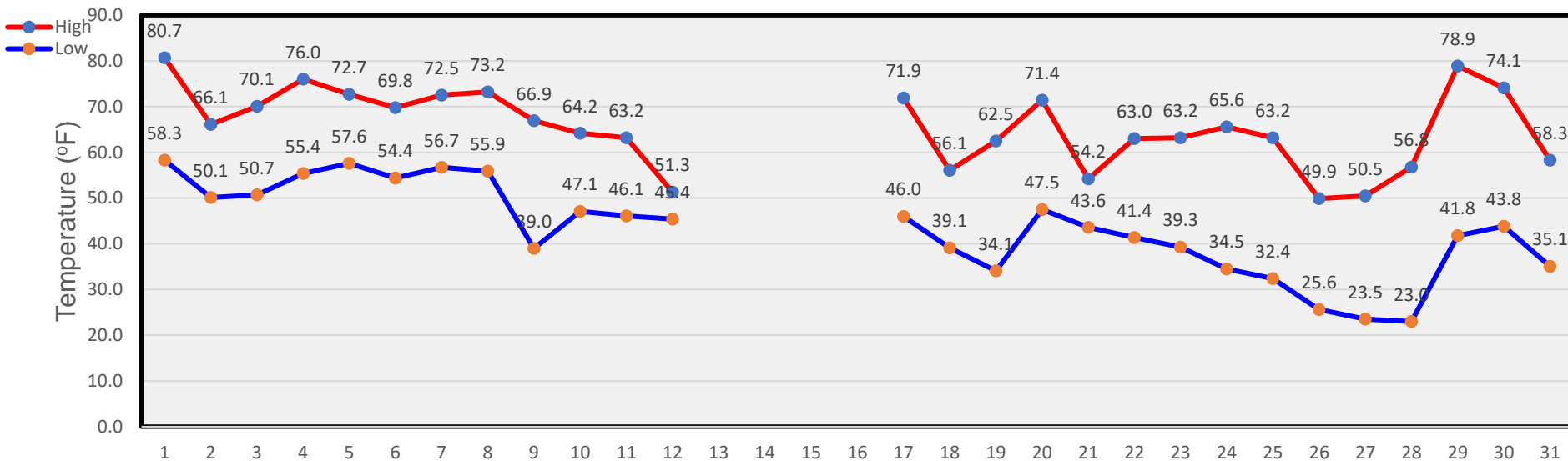
September Temperatures



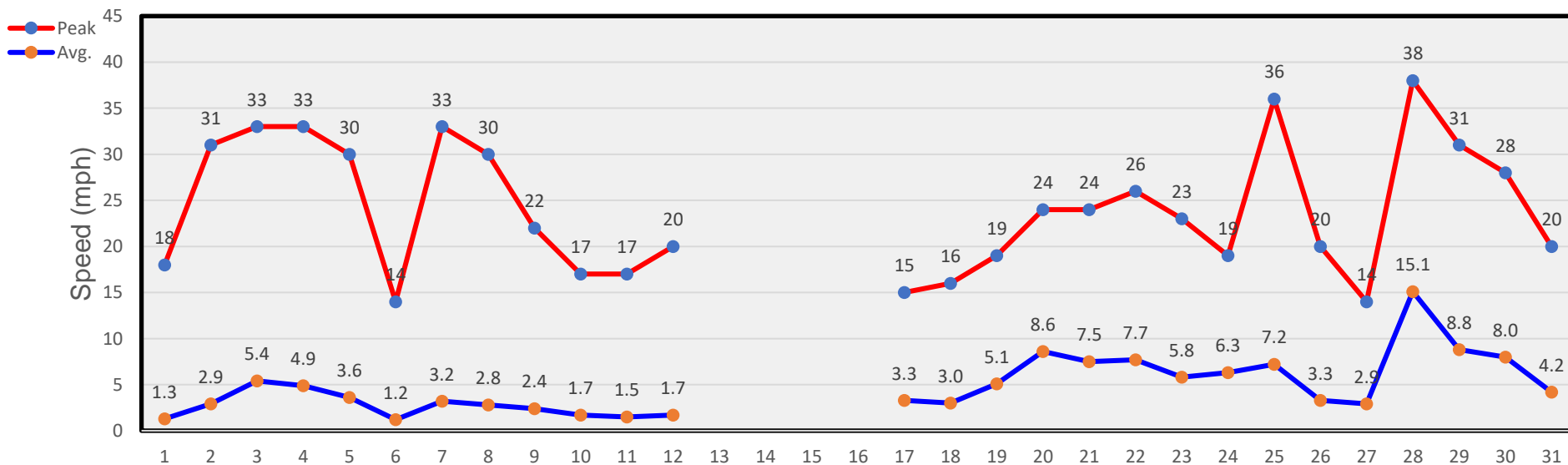
September Winds



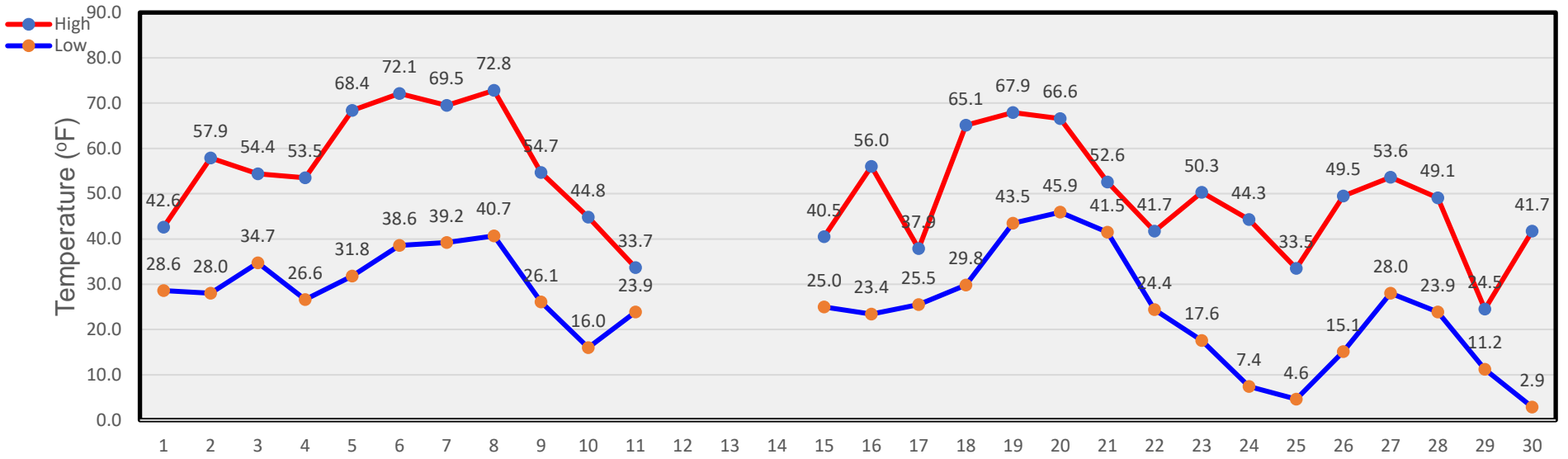
October Temperatures



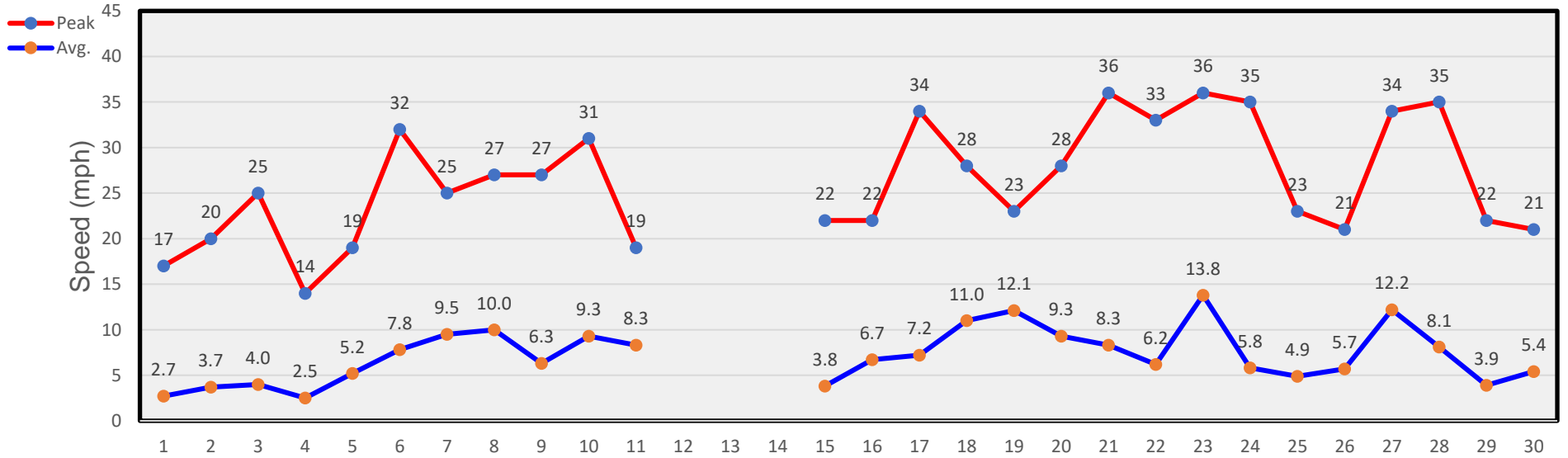
October Winds



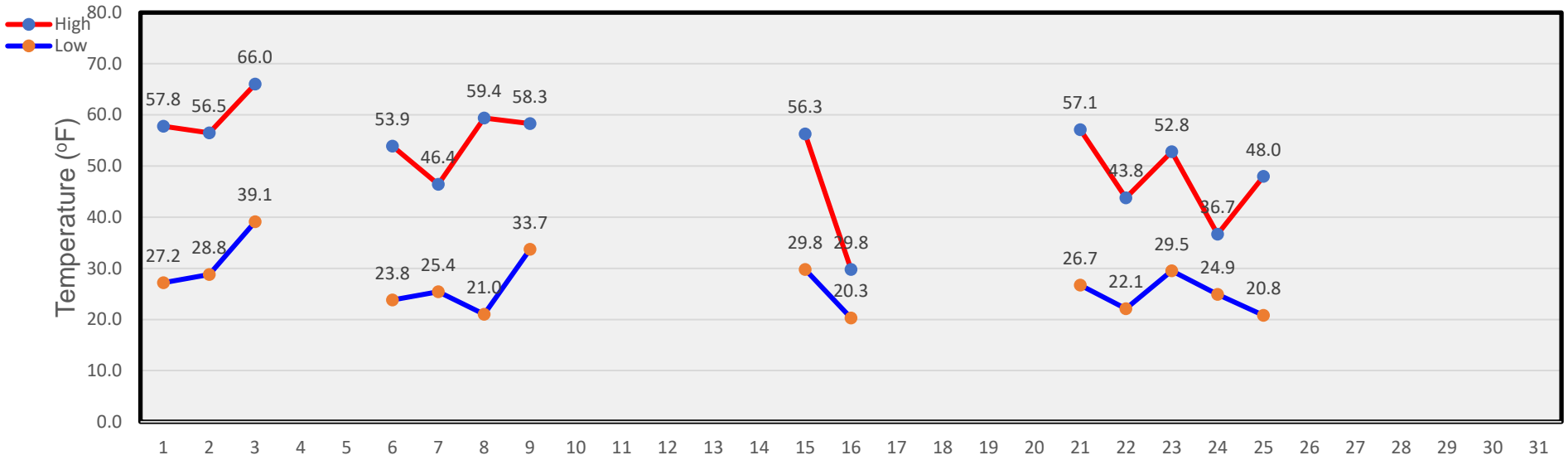
November Temperatures



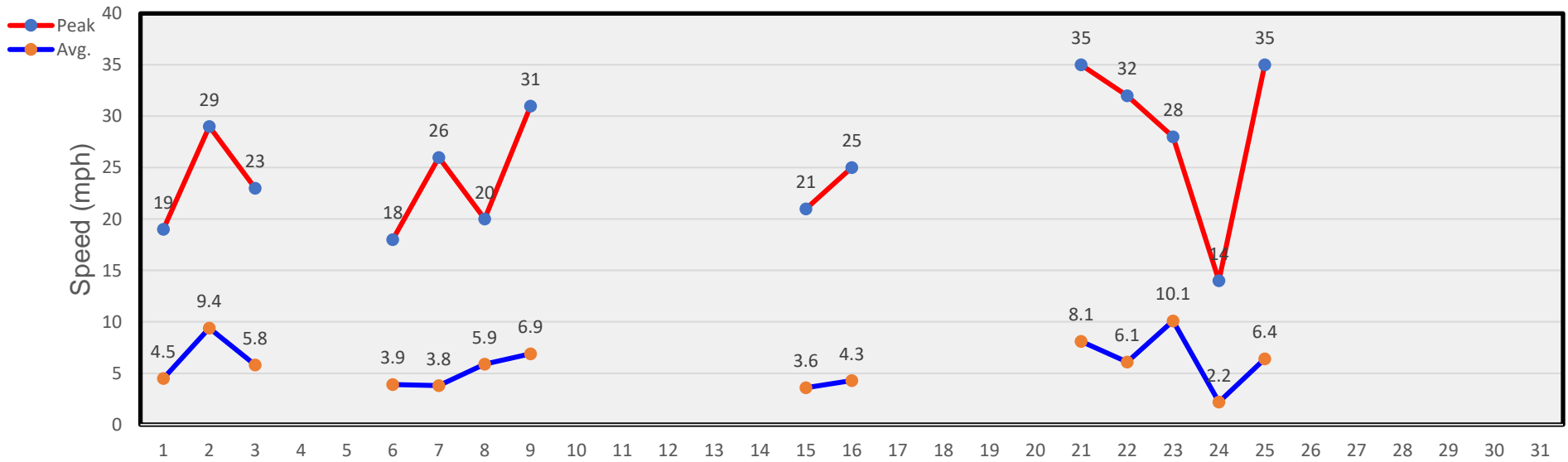
November Winds



December Temperatures



December Winds



Tables

January

Day	Mean Temp.	High Temp.	High Temp. Time	Low Temp.	Low Temp. Time	Heat Degree Days	Cool Degree Days	Precip.	Average Wind Speed	Peak Wind Speed	Peak Wind Time	Wind Dominant Direction
1	35.4	49.8	11:35a	21.0	4:34a	29.6			10.2	38	9:05p	
2	35.0	52.9	2:00p	22.7	9:20p	27.2			8.9	33	12:25a	
3	27.9	40.1	11:15a	18.9	6:45a	35.5			2.4	17	1:25p	
4	29.2	39.6	1:25p	22.1	12:00m	34.2			6.1	22	4:00p	
5	39.1	55.1	11:55a	21.0	12:10a	27.0			4.5	20	12:55p	
6	27.7	51.7	11:20a	4.1	10:00p	37.1			6.2	28	7:00p	
7	9.9	18.8	12:55p	-1.0	6:05a	56.1			1.5	12	7:40a	
8	20.9	40.2	12:55p	5.8	5:40a	42.0			6.9	21	4:35p	
9	33.2	48.3	2:05p	17.2	4:00a	32.3			6.2	28	8:50p	
10	34.4	49.1	12:00p	22.4	11:10p	29.3			4.2	21	12:05a	
11	35.7	50.0	12:05p	18.8	6:50a	30.6			6.0	28	12:00m	
12	44.7	57.8	1:25p	35.9	1:25a	18.2			15.3	31	4:10p	
13	40.3	57.8	11:25a	27.0	3:20a	22.6			4.4	21	12:15a	
14	33.3	41.9	11:45a	25.1	11:30p	31.5			2.6	17	11:55a	
15	32.1	47.0	1:55p	20.3	11:20p	31.3			3.6	16	11:15a	
16	37.8	55.4	1:15p	18.6	12:15a	28.0			5.5	17	6:25p	
17	40.1	53.6	11:40a	27.3	11:45p	24.6			2.4	16	3:25p	
18	37.2	49.8	1:30p	24.1	6:25a	28.0			6.3	20	10:25a	
19	38.2	50.8	10:50a	24.4	9:55p	27.4			8.2	27	5:15a	
20	34.5	45.8	12:25p	24.1	9:35p	30.0			8.3	35	5:55a	
21	37.2	47.1	10:10a	18.8	1:15a	32.1			16.6	44	9:25p	
22	38.6	50.4	1:20p	30.0	11:50p	24.8			12.8	42	4:20a	
23	31.3	41.8	12:25p	23.3	5:55a	32.5			5.1	25	12:10a	
24	28.4	39.5	1:15p	14.1	12:00m	38.2			4.0	29	10:15a	
25	28.4	46.7	11:05a	12.1	6:05a	35.6			5.1	20	6:50a	
26	31.2	41.2	2:10p	15.9	12:45a	36.5			15.6	39	1:05p	
27	34.8	48.5	11:10a	25.1	12:00m	28.2			2.9	18	12:55a	
28	19.3	25.1	12:05a	15.6	9:30p	44.6		0.24	3.2	14	7:30a	
29	23.6	35.3	12:25p	14.6	10:25p	40.0			2.3	16	12:50p	
30	29.8	42.4	11:30a	15.1	12:40a	36.3			11.0	33	4:15p	
31	33.1	44.5	12:10p	19.1	11:55p	33.2			8.2	30	1:40p	
--	32.3 ¹	56.8 ³	12th	-1.0 ³	7th	1004.3 ²		0.24 ²	6.7 ¹	44 ³	21st	

Footnotes: 1. Average; 2. Sum (total); 3. Max or Min
 Heat Base: 65.0 Cool Base: 65.0
 Method: (High + Low) / 2 (per ¼ hour)

- 29th: About 3 inches of snow yesterday and last night with about 1/4 inch of very welcome moisture...the first this month!

February

Day	Mean Temp.	High Temp.	High Temp. Time	Low Temp.	Low Temp. Time	Heat Degree Days	Cool Degree Days	Precip.	Average Wind Speed	Peak Wind Speed	Peak Wind Time	Wind Dominant Direction
1	28.8	45.5	1:40p	17.8	2:35a	33.4			3.6	13	2:40p	ESE
2	29.1	39.3	11:50a	14.0	5:00a	38.4			14.3	40	2:30p	
3	31.7	42.9	11:55a	26.0	7:20a	30.5		0.18	4.9	25	12:55a	
4	29.4	46.2	1:05p	20.3	11:45p	31.8			5.5	22	5:40a	
5	32.5	51.1	12:15p	18.4	5:10a	30.3			3.3	15	5:55a	
6	33.2	48.0	11:50a	20.6	4:30a	30.7			8.4	28	12:35p	
7	25.8	31.8	1:25p	20.5	10:55p	38.9			4.7	18	12:55a	
8	19.0	27.3	12:45p	10.7	10:35p	46.0		0.38	2.0	14	5:05p	
9	15.9	28.5	1:25p	9.9	3:10a	45.8			9.6	30	5:25p	
10	28.1	40.9	12:55p	14.9	10:05a	37.1			8.1	25	11:40a	
11	26.0	39.2	1:40p	13.6	5:25a	38.6			3.9	18	11:40a	
12	31.0	44.8	12:55p	13.3	2:15a	36.0			6.1	19	4:30a	
13	33.8	46.5	12:35p	20.3	2:45a	31.6			4.2	25	12:10p	
14	17.7	27.3	12:05a	5.4	12:00m	48.6		0.05	4.9	24	6:30a	
15	18.2	32.7	12:50p	1.7	5:55a	47.8			3.8	16	5:20p	
16	25.8	38.2	12:25p	12.9	4:20a	39.5			5.6	20	10:55p	
17	32.1	45.8	1:45p	18.3	6:30a	33.0			2.1	24	12:25a	
18	31.9	48.2	12:50p	18.8	3:00a	31.5			2.9	16	1:55p	
19	28.2	38.3	1:55p	22.1	6:50a	34.8			6.8	34	4:55p	
20	28.3	40.1	8:15a	22.7	11:35p	33.6			8.4	31	1:40a	
21	19.9	23.5	10:10a	14.8	11:30p	45.9		0.15	2.7	16	3:05p	
22	13.0	16.4	3:05p	7.7	12:00m	53.0		0.15	2.1	14	1:30p	
23	20.0	33.7	3:40p	7.0	12:15a	44.6			5.0	22	6:05p	
24	34.5	52.2	12:35p	14.1	12:05a	31.8			7.0	26	3:30p	
25	29.6	34.7	12:55p	26.3	12:00m	34.5		0.40	4.3	20	10:25a	
26	29.4	36.9	3:20p	23.8	5:10a	34.6			5.6	27	11:05p	
27	35.8	47.4	1:25p	21.4	6:30a	30.6			11.3	40	11:10p	
28	31.3	36.3	7:35a	25.4	11:50p	34.2		0.25	9.0	37	7:50a	
--	27.1 ¹	52.2 ³	24 th	1.7 ³	15 th	1,046.8 ²		1.56 ²	5.7 ¹	40 ³	2 nd	

Footnotes: 1. Average; 2. Sum (total); 3. Max or Min
 Heat Base: 65.0 Cool Base: 65.0
 Method: (High + Low) / 2 (per ¼ hour)

- 3rd: About 2 inches of fluffy snow yesterday.
- 8th: About 4.5 inches of snow yesterday and last night.
- 9th: Another inch or so last night.
- 14th: And about another inch this morning so far.
- 22nd: About 2 inches yesterday and last night....more on the way.
- 26th: About 4 inches yesterday and last night.

March

Day	Mean Temp.	High Temp.	High Temp. Time	Low Temp.	Low Temp. Time	Heat Degree Days	Cool Degree Days	Precip.	Average Wind Speed	Peak Wind Speed	Peak Wind Time	Wind Dominant Direction
1	26.7	34.3	12:50p	18.0	12:00m	38.9		0.27	3.8	16	5:05a	
2	33.8	47.9	2:45p	14.8	4:35a	33.6			6.1	19	8:45p	
3	40.1	53.1	1:35p	24.7	5:10a	26.1			8.5	24	6:45p	
4	44.9	58.1	12:15p	35.6	2:00a	18.2			12.1	38	1:00p	
5	40.4	48.3	1:40p	29.5	11:45p	26.1			6.8	26	12:50a	
6	39.8	55.3	12:10p	24.1	4:10a	25.3			7.1	24	12:25p	
7	38.3	47.9	9:05a	27.0	2:40a	27.5			10.6	42	10:45a	
8	33.7	41.6	11:15a	30.1	12:00m	29.2		1.25	3.0	20	12:15a	
9	35.4	49.2	12:25p	24.1	5:20a	28.3			3.3	18	1:55p	
10	31.2	39.9	12:25p	25.1	11:55p	32.5		0.45	3.2	17	11:05p	
11	27.2	36.9	2:50p	19.1	11:55p	37.0			5.5	24	12:20a	
12	34.0	47.9	3:50p	16.9	1:25a	32.6			4.1	20	1:15p	
13	43.8	58.7	1:15p	24.4	12:05a	23.5			8.1	29	9:00p	
14	29.1	38.3	12:05a	26.4	5:20a	32.7		0.40	4.8	29	12:05a	
15	29.4	38.8	3:45p	25.1	1:50a	33.0			3.4	18	12:15a	
16	37.2	53.1	2:45p	20.6	5:00a	28.2			3.5	18	11:25a	
17	44.9	61.2	2:40p	25.7	3:40a	21.5			6.5	30	11:20p	
18	50.1	69.4	1:30p	31.8	12:00m	14.4			9.4	30	12:15a	
19	23.2	31.8	12:05a	14.9	11:55p	41.7		0.25	8.8	31	9:10p	
20	20.2	31.2	3:30p	12.1	11:20p	43.3		0.20	4.5	20	7:10a	
21	36.5	54.4	2:30p	11.9	12:25a	31.8			5.8	26	8:00p	
22	46.7	64.7	12:15p	29.7	3:00a	17.8			6.6	21	12:10a	
23	38.6	46.1	12:05p	23.9	11:55p	30.0		0.40	4.8	25	11:25p	
24	22.5	26.3	2:50p	16.2	11:55p	43.8		0.62	6.2	22	4:00a	
25	32.9	44.6	3:05p	12.1	2:45a	36.7		0.30	12.3	36	2:05p	
26	40.8	54.2	9:45a	27.9	11:30p	24.0		0.10	8.7	29	2:20a	
27	31.2	38.9	3:40p	27.3	8:45p	31.9		0.05	8.6	36	6:05a	
28	39.1	59.0	1:50p	18.3	4:10a	26.3			3.9	17	11:30p	
29	51.6	70.3	3:00p	29.7	5:20a	15.0			12.8	30	11:55p	
30	60.6	73.9	11:35a	47.9	12:15a	4.1			10.5	33	8:00p	
31	58.5	69.8	12:25p	47.0	4:45a	6.6			10.5	29	1:10a	
--	37.5 ¹	73.9 ³	30 th	11.9 ³	21 st	861.5 ²		4.29 ²	6.9 ¹	42 ³	7 th	

Footnotes: 1. Average; 2. Sum (total); 3. Max or Min
 Heat Base: 65.0 Cool Base: 65.0
 Method: (High + Low) / 2 (per ¼ hour)

- 8th: 8am 1.5 inches of very wet snow preceded by rain.
- 11th: 4 inches of wet snow last night and this am
- 15th: Another 4 inches of snow yesterday and last night.
- 20th: About 4" to 5" of drifted snow last night and this morning. Aghhhh!!
- 24th: As of 9:00am a bit over 12" of snow and still coming down.
- 25th: About 3" of new and wet snow last night.
- 27th 8:am: ~1" of snow last night and this am.

April

Day	Mean Temp.	High Temp.	High Temp. Time	Low Temp.	Low Temp. Time	Heat Degree Days	Cool Degree Days	Precip.	Average Wind Speed	Peak Wind Speed	Peak Wind Time	Wind Dominant Direction
1	44.8	60.7	11:20a	29.5	12:00m	19.9			11.4	51	9:35a	
2	33.2	44.1	2:25p	26.4	8:00p	29.8			5.3	27	11:25p	
3	45.1	57.3	2:05p	30.1	12:30a	21.3			9.6	30	1:55p	
4	52.4	66.6	4:15p	38.8	4:10a	12.3			8.7	31	1:10p	
5	57.4	68.8	2:10p	44.2	6:00a	8.5			12.4	41	1:10p	
6	41.5	54.1	12:05a	27.2	10:25p	24.3			6.7	37	1:05a	
7	31.0	42.8	4:15p	24.8	7:10a	31.2		0.08	6.7	27	8:45a	
8	43.7	58.9	3:00p	24.5	6:20a	23.3			10.3	30	4:15p	
9	51.7	67.4	1:20p	39.5	5:05a	11.5			7.2	22	1:50a	
10	46.9	61.6	2:35p	33.4	5:30a	17.5			3.6	21	1:20p	
11	56.3	69.4	12:10p	35.8	6:40a	12.4			6.8	28	12:00m	
12	53.0	67.9	1:30p	45.2	10:25p	8.4		0.58	15.1	48	11:20p	
13	55.4	67.1	3:00p	45.8	6:50a	8.6			21.1	53	1:35a	
14	48.4	61.5	3:20p	41.8	5:25a		6.7		10.1	41	4:00p	
15	52.0	69.3	12:55p	42.9	11:15p	8.9		0.05	8.2	32	12:10a	
16	41.1	43.9	12:55p	39.1	9:25a	23.5		0.06	3.9	18	7:05a	
17	44.4	52.2	3:45p	38.2	2:45a	19.8		0.20	7.8	32	11:15a	
18	49.9	66.4	11:40a	34.3	5:55a	14.7			6.6	31	5:45p	
19	52.0	68.4	1:00p	42.9	2:35a	9.3		0.02	8.4	28	5:30p	
20	53.1	68.3	1:35p	37.9	5:20a	11.9		0.30	5.9	26	11:50a	
21	54.0	67.9	1:35p	44.6	2:45a	8.8		0.06	7.3	36	4:55p	
22	50.9	59.2	10:45a	39.3	12:00m	15.8		0.02	10.2	31	4:05a	
23	40.7	54.1	12:30p	32.1	2:25a	21.9		0.11	6.3	32	1:15a	
24	40.0	50.5	5:00p	29.1	12:00m	25.2			6.0	29	12:55p	
25	49.0	67.9	1:45p	28.5	12:55a	16.8			4.4	19	2:50p	
26	37.6	49.8	4:40p	27.2	5:05a	26.5		0.02	5.1	22	10:45a	
27	51.0	66.8	3:35p	33.8	5:25a	14.7			11.3	37	10:55p	
28	63.1	74.7	2:40p	50.2	12:05a	2.6			11.5	36	2:25p	
29	50.7	63.5	12:00p	31.0	12:00m	17.8			8.2	41	12:05p	
30	35.7	49.2	3:30p	21.3	5:10a	29.8			3.2	19	8:50p	
--	47.5 ¹	74.7 ³	28 th	21.3 ³	30 th	496.8 ²	6.7 ²	1.50 ²	8.3 ¹	53 ³	13 th	

Footnotes: 1. Average; 2. Sum (total); 3. Max or Min
 Heat Base: 65.0 Cool Base: 65.0
 Method: (High + Low) / 2 (per ¼ hour)

- 2nd: Both Feb. and Mar. of this year had the most precipitation since I have been keeping data (over 12 years).
- 7th: 8am, About 1inch of new snow and still coming.
- 23rd: About 1/2 inch of wet snow during the night.
- 29th: Very high wind gusts last night...my data sez about 45 mph but since it is only sampled every 5 minutes, I suspect that there were higher gusts.

May

Day	Mean Temp.	High Temp.	High Temp. Time	Low Temp.	Low Temp. Time	Heat Degree Days	Cool Degree Days	Precip.	Average Wind Speed	Peak Wind Speed	Peak Wind Time	Wind Dominant Direction
1	37.0	51.7	4:20p	22.9	5:35a	27.7			5.9	27	8:05p	
2	38.1	51.4	9:35a	28.2	3:25a	25.2			5.3	26	1:05p	
3	49.0	67.4	5:00p	27.6	5:30a	17.5			3.2	19	1:15p	
4	60.6	78.5	2:00p	40.6	5:40a	5.5			6.9	22	12:05p	
5	52.9	65.3	3:40p	32.4	5:10a	16.1			15.1	47	5:20p	
6	61.7	76.1	1:55p	40.3	12:00m	6.8			9.3	33	2:30a	
7	40.7	55.4	3:00p	30.7	5:50a	21.9			8.7	27	12:05a	
8	44.3	55.7	3:35p	32.8	5:25a	20.8			23.8	55	4:15p	
9	57.2	76.5	3:00p	36.3	5:35a	8.6			14.8	42	3:10a	
10	55.7	67.6	2:55p	45.2	9:35p	8.6			8.5	35	11:30a	
11	56.1	73.3	3:55p	37.9	6:05a	9.4			9.6	49	1:45p	
12	43.5	54.7	1:55p	33.1	12:00m	21.1			7.1	32	12:45p	
13	41.5	56.3	2:35p	31.3	5:25a	21.2		0.02	5.5	28	9:00a	
14	42.5	50.5	9:10a	38.3	4:00a	20.6		0.17	8.1	26	4:20p	
15	51.7	67.9	3:55p	40.5	4:40a	10.8		0.02	8.3	34	6:35a	
16	51.6	67.9	4:05p	33.2	5:20a	14.4			4.6	17	1:05p	
17	55.4	68.3	3:10p	43.8	12:30a	8.9			11.7	37	3:25p	
18	55.9	66.9	2:55p	48.5	12:00m	7.3			14.6	46	3:05p	
19	54.3	67.1	1:40p	42.3	2:05a	10.3		0.01	2.9	20	3:30p	
20	60.5	74.4	5:25p	36.3	1:00a	9.7			3.6	22	4:30p	
21	74.0	81.6	3:45p	55.0	7:05a		3.3		6.2	39	1:05p	
22	75.8	82.6	1:45p	59.2	6:05a		5.9		6.2	41	2:40p	
23	66.0	79.2	12:45p	50.8	5:00a				9.9	51	4:15p	
24	60.7	69.6	3:05p	48.9	11:40p	5.8			10.6	40	2:05p	
25	55.2	71.6	3:00p	35.5	5:00a	11.5			5.0	35	2:50p	
26	64.0	75.6	2:20p	52.6	2:25a	0.9			10.2	46	4:25p	
27	73.5	80.9	3:25p	60.9	7:25a		5.9	0.01	8.3	46	5:35p	
28	77.6	83.8	1:40p	68.8	7:50a		11.3	0.01	5.2	36	4:30p	
29	76.2	84.1	1:10p	54.7	12:00m		4.4		3.5	33	10:50a	
30	57.8	72.5	3:00p	47.4	5:30a	5.0			6.6	31	4:35p	
31	64.7	79.0	3:25p	49.8	11:30p	0.6			6.3	29	1:35a	
--	56.6 ¹	84.1 ³	29 ^h	22.9 ³	1 st	316.2 ²	30.8 ²	0.24 ²	8.2 ¹	55 ³	8 ^h	

Footnotes: 1. Average; 2. Sum (total); 3. Max or Min
 Heat Base: 65.0 Cool Base: 65.0
 Method: (High + Low) / 2 (per ¼ hour)

June

Day	Mean Temp.	High Temp.	High Temp. Time	Low Temp.	Low Temp. Time	Heat Degree Days	Cool Degree Days	Precip.	Average Wind Speed	Peak Wind Speed	Peak Wind Time	Wind Dominant Direction
1	71.7	83.2	2:00p	50.1	12:15a		1.6		2.8	25	2:00p	
2	62.3	77.2	2:40p	52.3	5:10a	0.3			2.8	18	1:55a	
3	74.2	80.9	1:45p	56.6	5:35a		3.8		2.3	19	7:20a	
4	82.5	90.3	1:55p	64.7	7:00a		12.5		2.8	25	2:55p	
5	75.0	91.4	3:25p	57.3	5:25a		9.3	0.05	4.0	20	2:55p	
6	75.0	82.4	12:40p	65.8	10:25p		9.1	0.01	3.4	27	1:05p	
7	82.5	96.1	1:15p	66.9	6:35a		16.5		3.8	27	2:50p	
8	69.2	76.8	5:30p	60.5	11:55p		3.7		4.6	27	12:15p	
9	71.3	82.6	2:05p	60.1	2:20a		6.3		8.4	42	3:10p	
10	82.7	91.8	1:40p	63.7	6:05a		12.8		4.3	30	12:05p	
11	68.2	82.6	4:50p	51.6	12:00m		2.1		3.6	22	4:25p	
12	50.3	56.2	3:15p	46.7	8:10a	13.5		0.26	4.9	20	7:10a	
13	53.1	66.6	3:05p	46.4	5:25a	8.5			3.6	25	5:30p	
14	53.7	66.8	11:20a	41.8	5:10a	10.7		0.01	2.9	22	10:15a	
15	60.0	76.1	5:45p	40.5	4:45a	6.7			8.9	41	2:30p	
16	78.3	86.1	3:30p	62.1	6:55a		9.1		9.5	50	4:15p	
17	78.9	88.8	1:55p	55.0	10:45p		6.9		2.8	24	7:30a	
18	76.6	90.7	1:35p	50.8	1:25a		5.8		4.8	28	2:50p	
19	83.4	90.3	2:45p	58.7	12:55a		9.5		3.2	27	1:45p	
20	84.5	92.9	2:30p	62.0	11:00p		12.4		3.7	33	12:45p	
21	82.5	92.1	4:10p	65.6	6:45a		13.8		3.2	26	11:30a	
22	77.4	89.7	11:15a	56.2	11:45p		7.9		5.1	33	1:10p	
23	73.4	81.6	2:25p	61.8	7:00a		6.7		3.8	29	3:50p	
24	73.6	84.3	2:05p	58.1	4:30p		6.2	0.62	5.3	28	5:50p	
25	80.9	90.3	11:15a	66.9	6:45a		13.6		3.2	39	12:25p	
26	77.0	87.8	3:05p	62.3	4:40p		10.1	0.06	1.8	21	4:45p	
27	64.5	76.0	12:05p	50.2	5:55a	1.9			1.9	18	10:35a	
28	73.4	80.5	3:45p	61.6	6:50a		6.1		3.7	29	4:50p	
29	73.3	78.5	1:40p	60.4	6:50a		4.4		4.7	30	2:10p	
30	70.2	75.6	2:50p	58.4	6:50a		2.0		7.5	36	2:05p	
--	72.7 ¹	96.1 ³	7 th	40.5 ³	15 th	41.6 ²	192.2 ²	1.01 ²	4.2 ¹	50 ³	16 th	

Footnotes: 1. Average; 2. Sum (total); 3. Max or Min
 Heat Base: 65.0 Cool Base: 65.0
 Method: (High + Low) / 2 (per ¼ hour)

- 25th: A VERY welcome 0.62 inches of precipitation yesterday pm, with a few dime size hail.

July

Day	Mean Temp.	High Temp.	High Temp. Time	Low Temp.	Low Temp. Time	Heat Degree Days	Cool Degree Days	Precip.	Average Wind Speed	Peak Wind Speed	Peak Wind Time	Wind Dominant Direction
1	73.8	80.9	2:25p	60.1	6:50a		5.5		7.6	36	10:45a	
2	72.5	81.2	1:05p	58.7	4:20p		4.9	0.12	6.6	42	9:45p	
3	74.1	82.8	4:25p	60.1	2:35p		6.4	0.24	3.8	22	12:55p	
4	71.6	82.8	3:40p	59.9	6:35a		6.4		3.6	28	3:05p	
5	71.6	83.5	3:55p	53.2	6:45a		3.3		1.7	20	5:40p	
6	74.3	80.7	11:55p	64.5	7:05a		7.6		6.9	36	2:00p	
7	65.4	72.8	2:05p	54.1	9:00a	1.5		0.20	1.4	16	12:20p	
8	64.5	72.5	12:40p	53.6	7:25a	2.0		0.42	1.7	20	4:00p	
9	66.3	76.1	1:50p	56.7	7:00a		1.4	0.12	3.3	27	5:15p	
10	72.3	80.7	12:05p	53.9	4:50p		2.3	0.76	3.9	51	4:55p	
11	74.5	82.2	12:50p	55.0	6:40a		3.6	0.12	2.6	26	2:15p	
12	79.1	85.7	3:45p	60.9	7:15a		8.3		1.4	19	1:00p	
13	84.6	90.3	12:30p	66.0	6:50a		13.2		2.7	31	4:45p	
14	82.0	90.1	10:40a	71.8	12:35a		15.9		2.3	26	12:20p	
15	76.3	84.5	12:45p	61.8	7:20a		8.2	0.08	1.3	22	3:15p	
16	79.1	88.0	1:00p	67.1	7:25a		12.6		3.3	26	4:45p	
17	83.5	90.7	1:05p	72.5	7:00a		16.6		3.4	27	2:15p	
18	80.9	91.0	12:50p	63.5	6:55p		12.3		2.6	32	2:25p	
19	86.9	94.9	11:30a	70.8	7:00a		17.9		2.8	28	4:10p	
20	77.9	87.0	12:25p	68.1	7:45a		12.6		1.9	21	12:35p	
21	77.7	84.0	2:05p	66.1	7:15a		10.1		7.4	40	11:05a	
22	76.7	86.5	11:45a	61.8	3:45p		9.2	0.05	1.4	26	7:55a	
23	74.0	83.6	11:00a	61.8	3:10p		7.7	0.01	1.4	17	3:15p	
24	63.7	69.4	3:15p	57.0	11:15a	1.8		0.42	1.2	17	12:30p	
25	61.4	65.6	12:45p	57.5	4:45p	3.5		0.31	3.1	35	3:35p	
26	71.4	76.0	4:10p	61.8	7:20a		3.9		8.3	36	12:25p	
27	82.5	90.3	2:30p	65.0	7:10a		12.7		2.4	22	8:05a	
28	77.9	84.9	1:55p	66.4	7:20a		10.7		2.6	24	5:35p	
29	78.1	82.6	3:00p	68.1	7:20a		10.3		5.2	28	3:55p	
30	81.2	87.4	2:30p	67.1	7:35a		12.3	2.05	2.1	19	12:05p	
31	72.2	82.0	2:35p	58.1	7:48a		5.1	0.05	1.7	26	1:15p	
--	75.1 ¹	94.9 ³	19 ^h	53.2 ³	5 ^h	8.8 ²	240.6 ²	4.95 ²	3.3 ¹	51 ³	10 ^h	

Footnotes: 1. Average; 2. Sum (total); 3. Max or Min
 Heat Base: 65.0 Cool Base: 65.0
 Method: (High + Low) / 2 (per ¼ hour)

August

Day	Mean Temp.	High Temp.	High Temp. Time	Low Temp.	Low Temp. Time	Heat Degree Days	Cool Degree Days	Precip.	Average Wind Speed	Peak Wind Speed	Peak Wind Time	Wind Dominant Direction
1	76.9	83.4	4:25p	66.3	7:35a		9.9		4.5	28	7:35a	
2	79.5	87.4	12:45p	68.9	7:30a		13.2		1.1	18	3:25p	
3	75.7	80.9	10:35a	67.8	2:47p		9.4		3.2	30	2:35p	
4	69.9	74.7	12:50p	60.7	9:40a		2.7		1.4	19	3:25p	
5	71.3	78.3	11:05a	57.0	5:25p		2.7	0.55	1.6	18	7:55a	
6	75.8	83.2	1:40p	63.1	8:05a		8.1		1.7	21	3:40p	
7	76.2	85.5	10:55a	58.0	3:50p		6.8	0.72	1.2	19	3:50p	
8	77.7	83.2	1:45p	68.3	7:25a		10.8		1.7	18	11:30a	
9	68.2	76.7	12:00p	58.7	1:30p		2.7	0.92	0.7	13	12:00p	
10	77.3	83.6	2:30p	64.3	7:50a		8.9		1.3	17	4:05p	
11	80.5	86.3	12:55p	65.0	7:20a		10.7		1.3	22	4:10p	
12	75.7	86.5	11:40a	64.3	1:40p		10.4	0.05	2.5	27	1:40p	
13	82.7	89.5	4:20p	65.2	7:25a		12.3		1.2	16	9:30a	
14	82.1	88.2	2:15p	62.4	7:25a		10.3		1.0	18	11:55a	
15	73.4	79.8	2:00p	59.6	5:50a		4.7		1.0	24	5:50p	
16	68.4	78.6	2:15p	62.1	3:35p		5.3	0.12	5.2	32	9:15a	
17	76.2	82.6	1:55p	60.5	7:55a		6.6		1.2	14	3:05p	
18	79.6	86.3	11:45a	68.4	7:50a		12.4		2.9	25	1:00p	
19	83.3	88.6	2:25p	66.8	8:15a		12.7		1.6	18	8:20a	
20	76.4	81.6	3:15p	62.3	7:35a		6.9		2.0	18	10:30a	
21	76.2	82.0	2:05p	56.7	6:45a		4.3		4.1	30	12:05p	
22	77.6	83.8	11:35a	68.1	7:40a		10.9		4.5	32	7:40a	
23	76.6	85.5	11:00a	63.2	3:10p		9.3	0.13	1.7	21	11:20a	
24	65.0	71.8	3:40p	53.1	8:55a	2.5			1.2	14	4:45p	
25	70.8	78.1	3:20p	56.6	7:50a		2.3		3.0	24	8:05a	
26	79.8	88.4	2:30p	61.8	7:30a		10.1		1.4	13	12:55p	
27	81.0	86.1	11:20a	66.8	7:35a		11.4		3.2	26	5:15p	
28	73.9	82.4	1:50p	61.5	7:00a		6.9	0.07	5.9	41	3:50p	
29	76.6	83.8	2:55p	61.6	7:20a		7.7		2.9	25	11:15a	
30	75.7	81.1	1:50p	59.6	8:05a		5.3		3.8	35	3:40p	
31	80.5	87.7	2:45p	67.3	7:45a		12.5		1.2	16	1:20p	
--	76.1 ¹	89.5 ³	13 th	53.1 ³	24 th	2.5 ²	248.3 ²	2.56 ²	2.3 ¹	41 ³	28 th	

Footnotes: 1. Average; 2. Sum (total); 3. Max or Min
 Heat Base: 65.0 Cool Base: 65.0
 Method: (High + Low) / 2 (per ¼ hour)

- 1st: The 4.95 inches of rain last month was the most precipitation in July since 1998.

September

Day	Mean Temp.	High Temp.	High Temp. Time	Low Temp.	Low Temp. Time	Heat Degree Days	Cool Degree Days	Precip.	Average Wind Speed	Peak Wind Speed	Peak Wind Time	Wind Dominant Direction
1	79.5	87.6	4:10p	60.7	8:30a		9.2		1.4	17	1:50p	
2	68.2	70.9	2:50p	64.3	5:55p		2.6		3.7	29	11:40a	
3	67.4	75.4	3:35p	51.4	7:30a	1.6			2.8	31	11:50a	
4	81.9	88.6	3:25p	63.9	7:45a		11.3		0.9	16	2:05p	
5	83.7	89.3	2:15p	65.0	7:45a		12.2		1.6	18	12:10p	
6	81.3	88.4	2:00p	71.5	5:50p		14.9		2.0	26	4:35p	
7	68.2	76.0	3:10p	52.5	7:30a	0.8			4.8	34	3:25p	
8	71.1	77.9	1:10p	60.7	7:55a		4.3		5.7	35	1:25p	
9	78.5	85.3	2:00p	63.5	7:50a		9.4		2.8	26	9:40a	
10	75.3	82.4	3:35p	58.7	7:40a		5.6		1.4	16	12:20p	
11	67.0	72.8	3:55p	48.9	7:30a	4.1			4.4	32	3:45p	
12	77.0	84.9	2:30p	61.6	7:40a		8.3		2.4	22	7:40a	
13	78.4	84.5	12:05p	63.9	7:05a		9.2		1.6	24	12:45p	
14	81.7	88.2	3:50p	64.3	7:45a		11.3		1.3	19	2:45p	
15	79.2	84.3	12:55p	62.4	7:45a		8.4		1.6	17	1:00p	
16	70.5	77.4	12:15p	54.8	7:55a		1.1		1.9	21	5:10p	
17	79.8	86.5	1:30p	65.6	8:00a		11.1		2.5	21	2:25p	
18	80.0	86.7	1:30p	65.6	7:45a		11.1		2.7	22	3:00p	
19	79.7	84.3	2:30p	67.9	8:00a		11.1		6.2	39	3:10p	
20	75.3	84.5	3:50p	62.9	8:15a		8.7		4.2	31	11:55a	
21	79.6	85.3	3:40p	67.4	7:55a		11.4		1.3	21	3:55p	
22	65.4	73.5	1:35p	60.1	8:20a		1.8	0.85	4.7	38	1:15p	
23	69.6	75.4	3:10p	57.5	7:30a		1.4		1.9	20	11:40a	
24	68.4	72.7	12:15p	56.9	7:55a	0.2			5.0	34	1:35p	
25	70.9	74.7	12:55p	60.7	8:00a		2.7		2.0	21	11:20a	
26	74.3	80.3	2:20p	55.7	8:05a		3.0		1.2	16	12:55p	
27	79.1	84.0	12:40p	62.0	8:00a		8.0		1.7	21	5:00p	
28	78.9	84.1	1:10p	60.5	8:00a		7.3		1.7	17	10:00a	
29	80.7	85.3	12:40p	63.9	8:00a		9.6		2.0	25	5:05p	
30	66.1	71.6	2:35p	51.0	8:00a	3.7			4.6	32	5:10p	
--	75.2 ¹	89.3 ³	5 th	48.9 ³	11 th	10.4 ²	194.7 ²	0.85 ²	2.7 ¹	39 ³	19 th	

Footnotes: 1. Average; 2. Sum (total); 3. Max or Min
 Heat Base: 65.0 Cool Base: 65.0
 Method: (High + Low) / 2 (per ¼ hour)

October

Day	Mean Temp.	High Temp.	High Temp. Time	Low Temp.	Low Temp. Time	Heat Degree Days	Cool Degree Days	Precip.	Average Wind Speed	Peak Wind Speed	Peak Wind Time	Wind Dominant Direction
1	75.2	80.7	11:50a	58.3	8:00a		4.5		1.3	18	1:00p	
2	60.4	66.1	1:45p	50.1	7:35a	6.9			2.9	31	2:35p	
3	62.5	70.1	2:05p	50.7	8:00a	4.6			5.4	33	8:00a	
4	68.4	76.0	11:05a	55.4	7:50a		0.7		4.9	33	3:05p	
5	68.6	72.7	11:15a	57.6	8:05a		0.1	0.24	3.6	30	2:20p	
6	64.6	69.8	1:45p	54.4	5:15p	2.9		0.10	1.2	14	12:10p	
7	68.3	72.5	12:40p	56.7	8:25a	0.4			3.2	33	2:15p	
8	68.5	73.2	2:05p	55.9	8:05a	0.4			2.8	30	10:45a	
9	61.1	66.9	1:35p	39.0	8:00a	12.0		0.02	2.4	22	10:30a	
10	58.5	64.2	1:20p	47.1	8:15a	9.4			1.7	17	4:40p	
11	58.7	63.2	1:50p	46.1	8:10a	10.3			1.5	17	4:20p	
12	48.7	51.3	3:00p	45.4	10:30a	16.7			1.7	20	11:35a	
13												
14												
15												
16												
17	59.2	71.9	3:30p	46.0	11:45p	6.0			3.3	15	5:30p	SE
18	47.6	56.1	2:45p	39.1	12:00m	17.4			3.0	16	9:15a	NNW
19	49.0	62.5	2:15p	34.1	7:45a	16.7			5.1	19	2:45a	SSE
20	57.8	71.4	3:00p	47.5	7:45a	5.5			8.6	24	5:30a	SSE
21	49.2	54.2	12:15a	43.6	8:00a	16.1		0.09	7.5	24	5:45a	SSE
22	50.2	63.0	1:30p	41.4	7:00a	12.8			7.7	26	9:45a	SSE
23	50.5	63.2	2:30p	39.3	11:30p	13.8			5.8	23	1:00p	WNW
24	50.7	65.6	4:45p	34.5	7:00a	15.0			6.3	19	11:15p	SSE
25	49.3	63.2	2:15p	32.4	10:45p	17.2			7.2	36	12:30p	SSE
26	37.9	49.9	3:15p	25.6	7:15a	27.3			3.3	20	3:00p	WNW
27	35.2	50.5	2:00p	23.5	7:00a	28.0			2.9	14	4:00p	ESE
28	41.8	56.8	3:45p	23.0	1:45a	25.1			15.1	38	10:45p	SSE
29	58.3	78.9	3:00p	41.8	10:15p	4.7			8.8	31	12:15a	SSE
30	59.3	74.1	2:45p	43.8	4:45a	6.1			8.0	28	9:15p	SSE
31	49.5	58.3	2:30p	35.1	11:45p	18.3			4.2	20	1:45a	NNW
--	55.9 ¹	80.7 ³	1 st	23.0 ³	28 th	293.5 ²	5.3 ²	0.45 ²	4.8 ¹	38 ³	28 th	SSE

Footnotes: 1. Average; 2. Sum (total); 3. Max or Min
 Heat Base: 65.0 Cool Base: 65.0
 Method: (High + Low) / 2 (per ¼ hour)

- 13th: NOTICE! I believe that my old weather station is not giving accurate and/or complete data. I have a new station on order and hope to have it operational soon.
- 13th thru 16th: Data not available
- 18th: Now have a new station installed and running...a Davis Vantage VUE. Data for the 17th should be complete and accurate. Cheers....Walt
- 24th: FOR YOUR INFO...As of today, Oct. 2010 has been the warmest Oct. since I started this data page

November

Day	Mean Temp.	High Temp.	High Temp. Time	Low Temp.	Low Temp. Time	Heat Degree Days	Cool Degree Days	Precip.	Average Wind Speed	Peak Wind Speed	Peak Wind Time	Wind Dominant Direction
1	34.9	42.6	5:00p	28.6	11:45p	29.4		0.18	2.7	17	10:15a	E
2	42.8	57.9	3:30p	28.0	7:30a	22.0			3.7	20	4:00p	NNW
3	44.4	54.4	1:30p	34.7	3:45a	20.4			4.0	25	11:15a	NNW
4	39.7	53.5	2:30p	26.6	7:15a	25.0			2.5	14	2:45p	NNW
5	51.2	68.4	2:00p	31.8	1:00a	14.9			5.2	19	9:30p	SSE
6	55.6	72.1	2:15p	38.6	7:30a	9.7			7.8	32	9:30p	SE
7	56.4	69.5	12:45p	39.2	11:00p	10.7			9.5	25	2:00a	SSE
8	56.0	72.8	1:45p	40.7	4:45a	8.3			10.0	27	1:45p	SSE
9	42.7	54.7	11:30a	26.1	11:45p	24.6			6.3	27	11:30a	SSE
10	32.9	44.8	2:45p	16.0	7:15a	34.6			9.3	31	2:45p	SE
11	31.2	33.7	12:15a	23.9	7:00a	36.2			8.3	19	1:00a	SSE
12												
13												
14												
15	31.8	40.5	9:50a	25.0	11:30p	32.3			3.8	22	12:15p	NNW
16	38.2	56.0	2:00p	23.4	2:00a	25.3			6.7	22	9:15p	SSE
17	31.9	37.9	3:15p	25.5	7:15a	33.3			7.2	34	9:30p	NNW
18	48.0	65.1	1:15p	29.8	1:00a	17.6			11.0	28	11:30a	SSE
19	50.1	67.9	11:15a	43.5	3:30a	9.3			12.1	23	4:00a	SSE
20	55.8	66.6	12:00p	45.9	10:30p	8.8			9.3	28	7:15p	SSE
21	46.4	52.6	12:30p	41.5	11:45p	18.0			8.3	36	10:30p	SW
22	33.8	41.7	12:15a	24.4	11:30p	32.0			6.2	33	11:00a	WSW
23	36.1	50.3	3:00p	17.6	2:45a	31.0			13.8	36	12:00p	SSE
24	34.2	44.3	12:30p	7.4	12:00m	39.1			5.8	35	5:45a	SW
25	19.8	33.5	2:50p	4.6	4:15a	46.0			4.9	23	7:30p	SSE
26	34.4	49.5	4:15p	15.1	3:45a	32.7			5.7	21	12:15p	SSE
27	42.1	53.6	12:30p	28.0	4:00a	24.2			12.2	34	12:30p	SSE
28	36.5	49.1	11:00a	23.9	12:00m	28.5			8.1	35	1:00p	SSE
29	19.3	24.5	1:15p	11.2	10:45p	47.1		0.05	3.9	22	10:30a	NNW
30	23.4	41.7	1:30p	2.9	4:30a	42.7			5.4	21	11:45p	SE
--	39.6 ¹	72.8 ³	8 th	2.0 ³	30 th	703.5 ²	²	0.23 ²	7.2 ¹	36 ³	21 st	SSE

Footnotes: 1. Average; 2. Sum (total); 3. Max or Min
 Heat Base: 65.0 Cool Base: 65.0
 Method: (High + Low) / 2 (per ¼ hour)

- 2nd: The first snow of the season yesterday, which I believe is the latest for these last 10 yrs or so. Any better info from anyone? It started with a light rain which turned into a mixture with snow and then a very wet snow. Best guess is 1 to 2 inches on the ground with 0.18 precipitation. What a different Fall!
- 12th thru 14th: Data not available
- 16th: Light skiff of snow this morning.
- 30th: About 1" of fluffy snow yesterday.

December

Day	Mean Temp.	High Temp.	High Temp. Time	Low Temp.	Low Temp. Time	Heat Degree Days	Cool Degree Days	Precip.	Average Wind Speed	Peak Wind Speed	Peak Wind Time	Wind Dominant Direction
1	41.6	57.8	1:00p	27.2	3:15a	22.5			4.5	19	1:00a	SE
2	43.1	56.5	12:30p	28.8	7:15a	22.3			9.4	29	11:15p	SE
3	52.4	66.0	1:00p	39.1	12:00m	12.5			5.8	23	1:00a	SSE
4												
5												
6	44.5	53.9	1:00p	23.8	7:30a	26.2			3.9	18	4:00p	SSE
7	36.2	46.4	12:30a	25.4	12:00m	29.1			3.8	26	1:30p	NNW
8	39.5	59.4	1:15p	21.0	7:00a	24.8			5.9	20	6:00p	SSE
9	46.3	58.3	12:15p	33.7	5:30a	19.0			6.9	31	11:45p	SE
10												
11												
12												
13												
14												
15	45.8	56.3	11:59a	29.8	11:56p	22.0			3.6	21	8:47p	WNW
16	25.6	29.8	12:01a	20.3	11:55p	40.0		0.05	4.3	25	2:26p	SE
17												
18												
19												
20												
21	43.8	57.1	2:20p	26.7	10:00p	23.1			8.1	35	12:55a	SSE
22	31.2	43.8	1:20p	22.1	2:10a	32.0			6.1	32	10:40p	SE
23	40.2	52.8	12:50p	29.5	11:15p	23.8		0.06	10.1	28	5:55a	SE
24	30.2	36.7	3:20p	24.9	8:55p	34.2		0.04	2.2	14	10:55a	NNW
25	34.0	48.0	2:40p	20.8	7:05a	30.6		0.05	6.4	35	12:00m	SSE
26												
27												
28												
29												
30												
31												
--	39.6 ¹	66.0 ³	3 rd	20.3 ³	16 th	362.0 ²	²	0.20 ²	5.8 ¹	35 ³	21 st	SE

Footnotes: 1. Average; 2. Sum (total); 3. Max or Min
 Heat Base: 65.0 Cool Base: 65.0
 Method: (High + Low) / 2 (per ¼ hour)

- 7th: Data for the 4th and 5th missing due to station problem...seems ok now.
- 13th: Station problem again...will be working on it! Aghhhh!
- 16th: Data back starting 15th...A skiff of snow this am with more predicted for today.
- 17th: About 4" of welcome snow last night and this am.

- 22nd: After several conversations with Tech Support data now downloading...hopefully for good.
- 24th: About 1" of snow last night. HAPPY HOLIDAYS!!
- 27th: Data logger has crapped again. Finally they are sending a new part!! HAPPY NEW YEAR