



Santa Fe Trail Ranch

Climatological Data
for

2021

The climatological data in this document represents a compilation of the Weather Stats pages from the original Santa Fe Trail Ranch web site and continuing data collection since moving to the new SFTR web site.

Until April 2012, longtime resident Walt Wolff collected and posted daily weather data. But the wintery weather and work associated with maintaining the beautiful Loma Lobo property caused Joyce and Walt to switch to part-time status. Walt gave Robert L. Scott the weather equipment and Bob posted the weather updates until his equipment failed in January 2018. Since then, the data has come from the StargateCOlorado weather station (same type of equipment that Walt/Bob used) maintained by Ernie Parker / Sharon Sorenson.

The data is broken into two sections: the charts in the first section are a synopsis of the weather on the Ranch. For more detailed data (and an aid to help you sleep!), see the monthly climatological tables in the second section.

Notes:

- The StargateCOlorado weather station is at the south end of the Ranch and at a higher elevation than the station maintained by Walt Wolff & Bob Scott. As a result, you will find that, on average, the temperature readings will be slightly lower, and the precipitation readings will be slightly higher than those reported by Bob/Walt's stations.
- The data shown on the various pages starts at a high level and gets more detailed the further down you go.
 - The highest-level charts show the precipitation, snow, temperature, and winds for the entire year.
 - The middle-level charts show the temperature and winds for each month of the year.
 - The lowest-level tables provide all the data collected by the weather station.
 - The snow data has only been collected since 2015 by Ernie / Sharon and does not come from the weather station.
 - What's the definition of "Mean Temperature"? Unlike most weather information, where the "Average Temperature" is just the average of the highest and lowest temperatures of the day, the weather station captures the temperature every 15 minutes, collecting 96 readings per day. The "Mean Temperature" is the average of all 96 readings, giving you a more accurate value.
- Prior to 2022, the times shown in the climatological tables are based on a 12-hour (AM/PM) clock. Starting in 2022, the times listed are based on a 24-hour clock. The data collection program suddenly switched modes.

Enjoy!!

--Ernie Parker

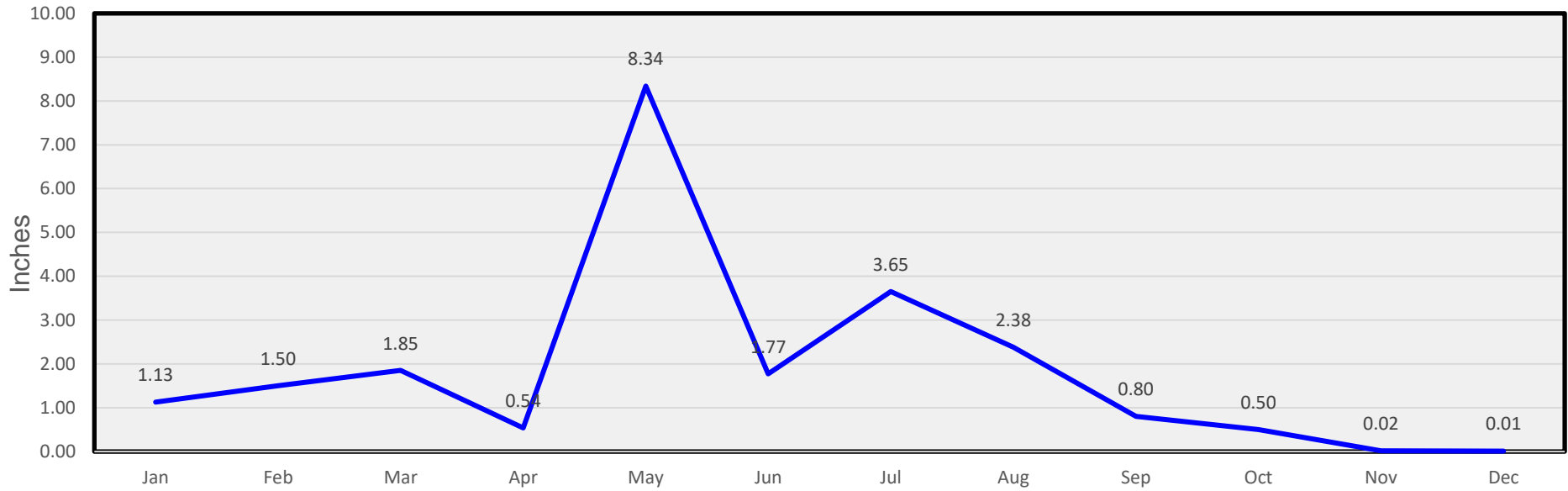
Contents

Charts	5
Monthly Precipitation.....	6
Monthly Snow	6
Monthly Precipitation.....	7
Monthly Snow	7
January Temperatures.....	8
January Winds	8
February Temperatures	9
February Winds.....	9
March Temperatures.....	10
March Winds	10
April Temperatures	11
April Winds.....	11
May Temperatures.....	12
May Winds	12
June Temperatures.....	13
June Winds	13
July Temperatures	14
July Winds.....	14
August Temperatures	15
August Winds.....	15
September Temperatures.....	16
September Winds	16
October Temperatures.....	17
October Winds	17
November Temperatures.....	18
November Winds	18
December Temperatures.....	19
December Winds	19

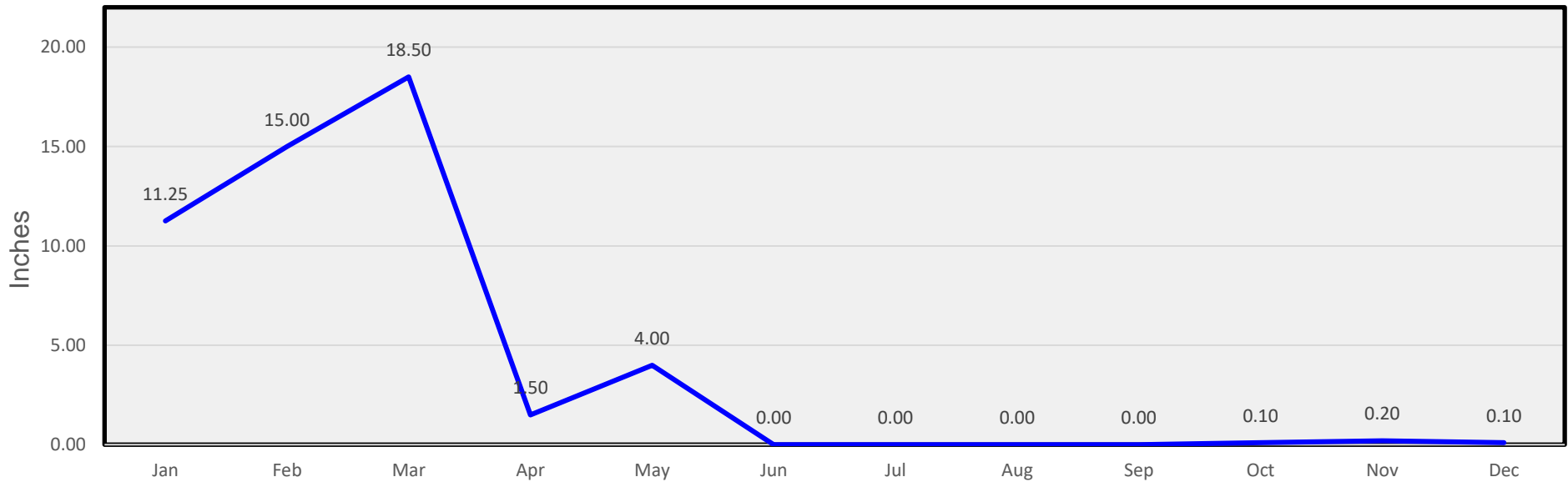
Tables	20
January	21
February	22
March	23
April	24
May	25
June	26
July	27
August	28
September	29
October	30
November	31
December	32

Charts

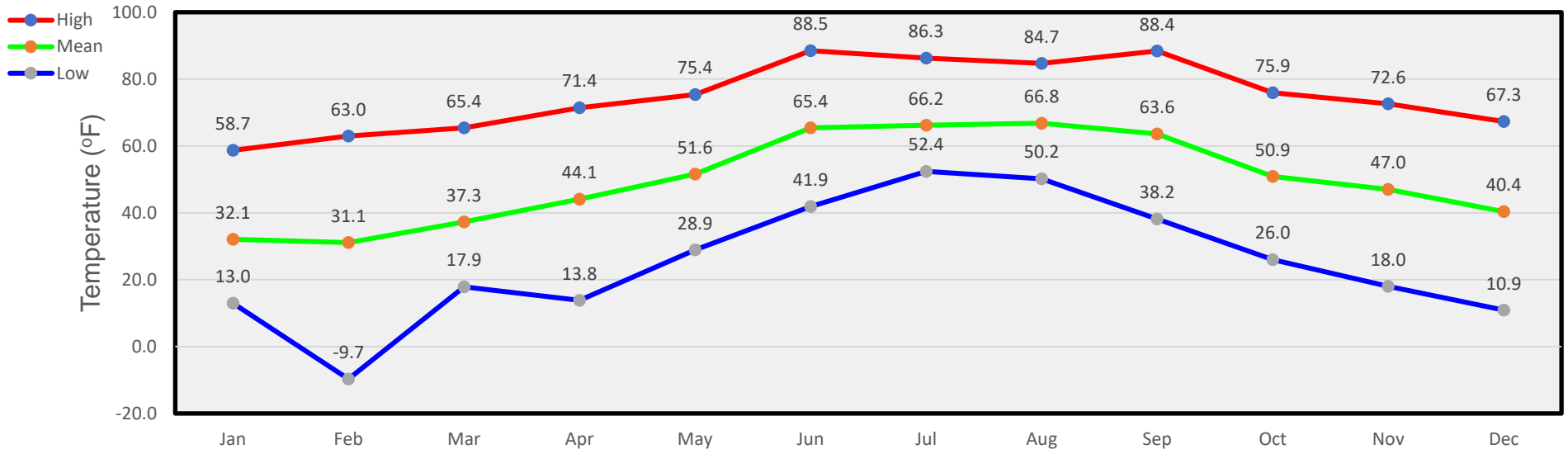
Monthly Precipitation



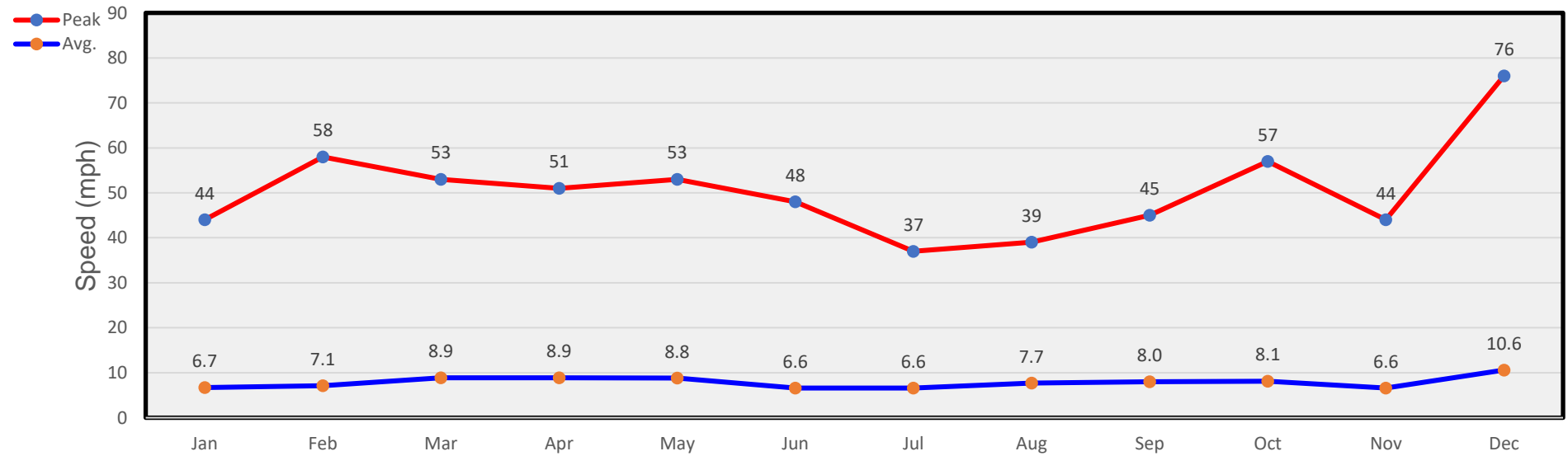
Monthly Snow



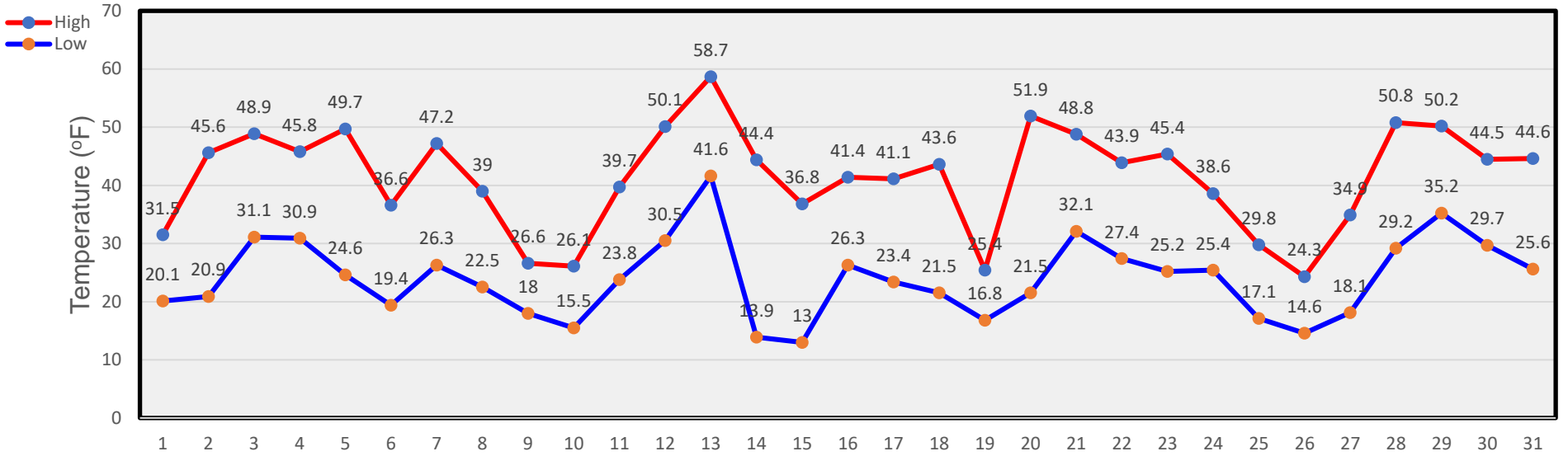
Monthly Temperatures



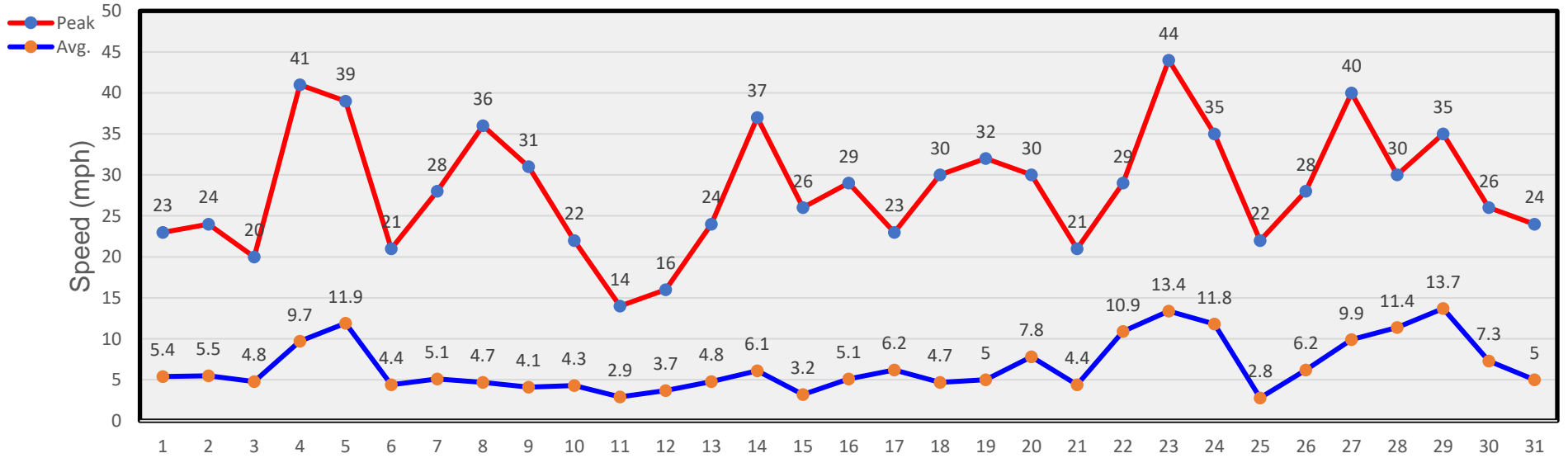
Monthly Winds



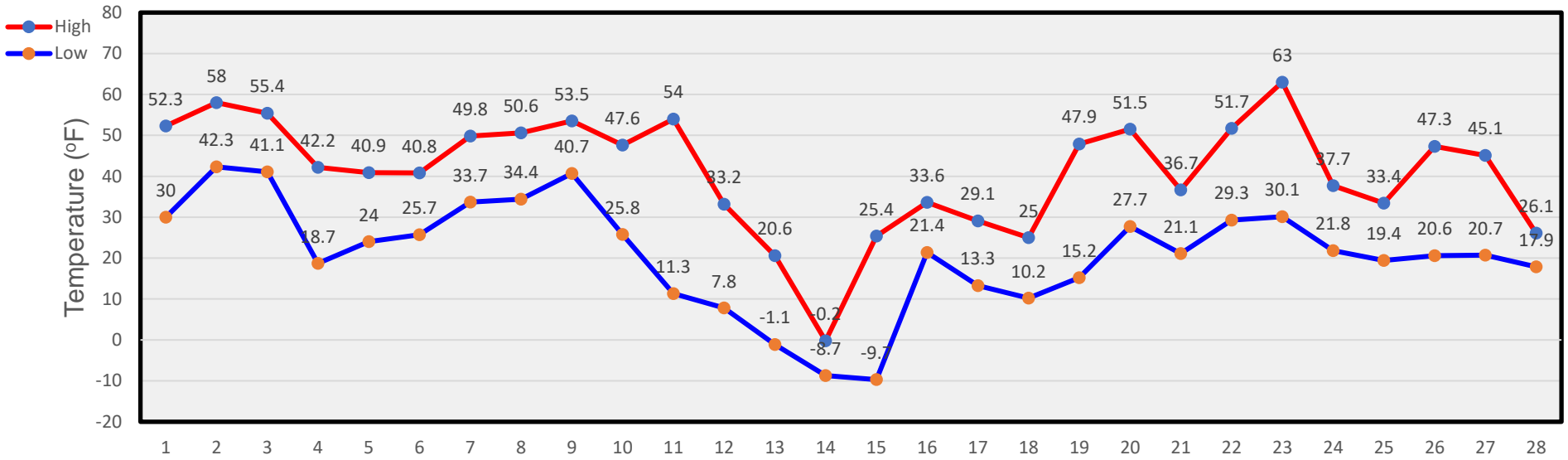
January Temperatures



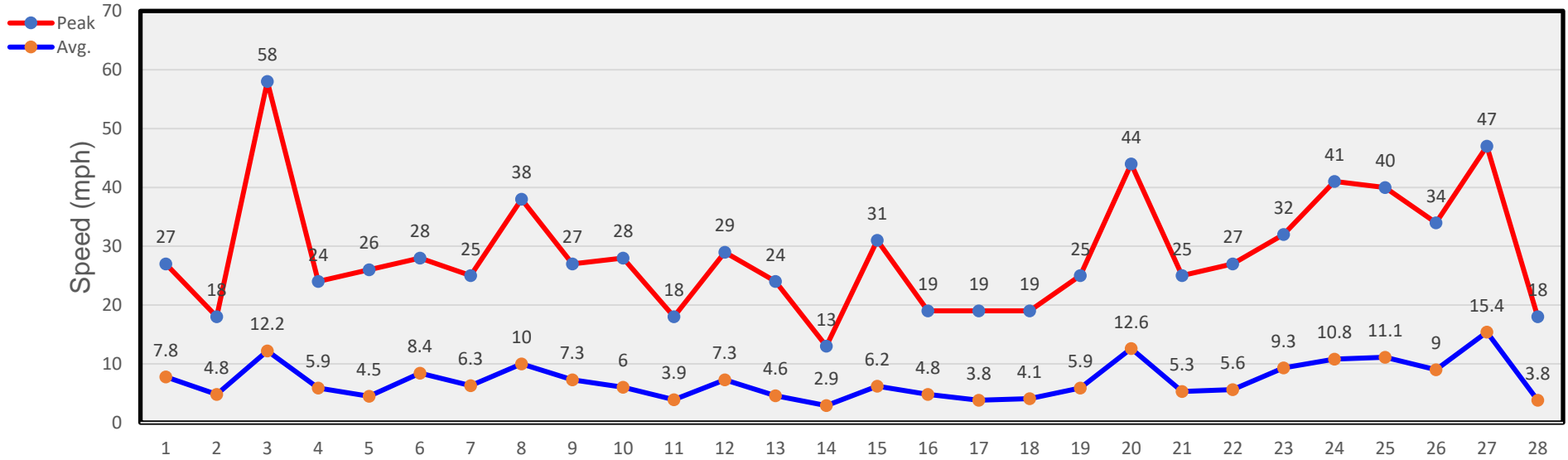
January Winds



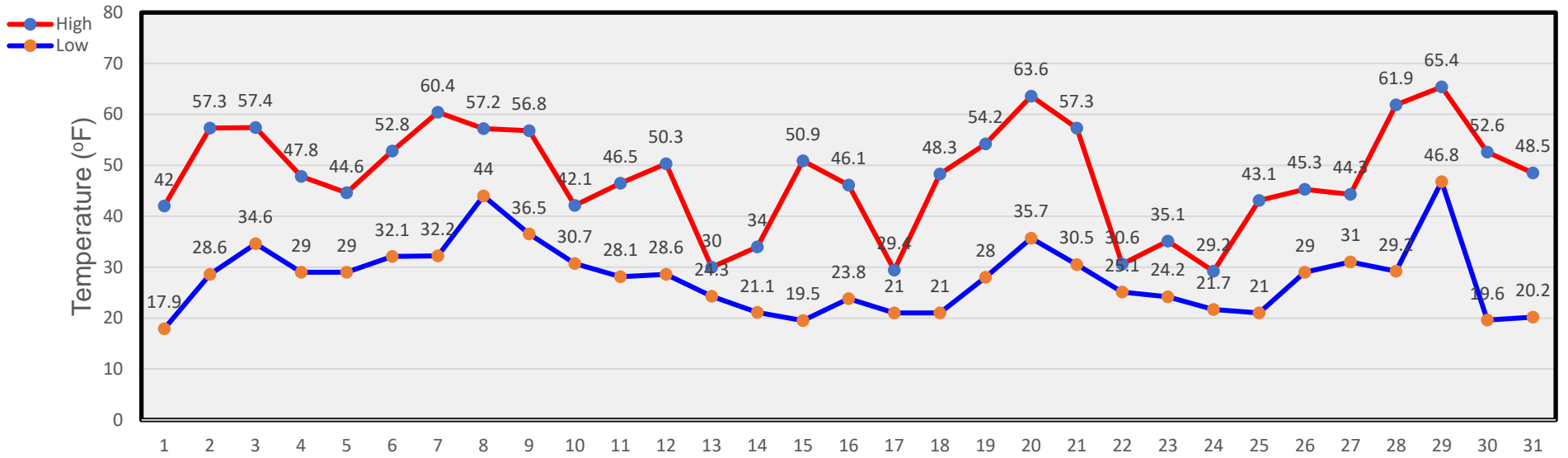
February Temperatures



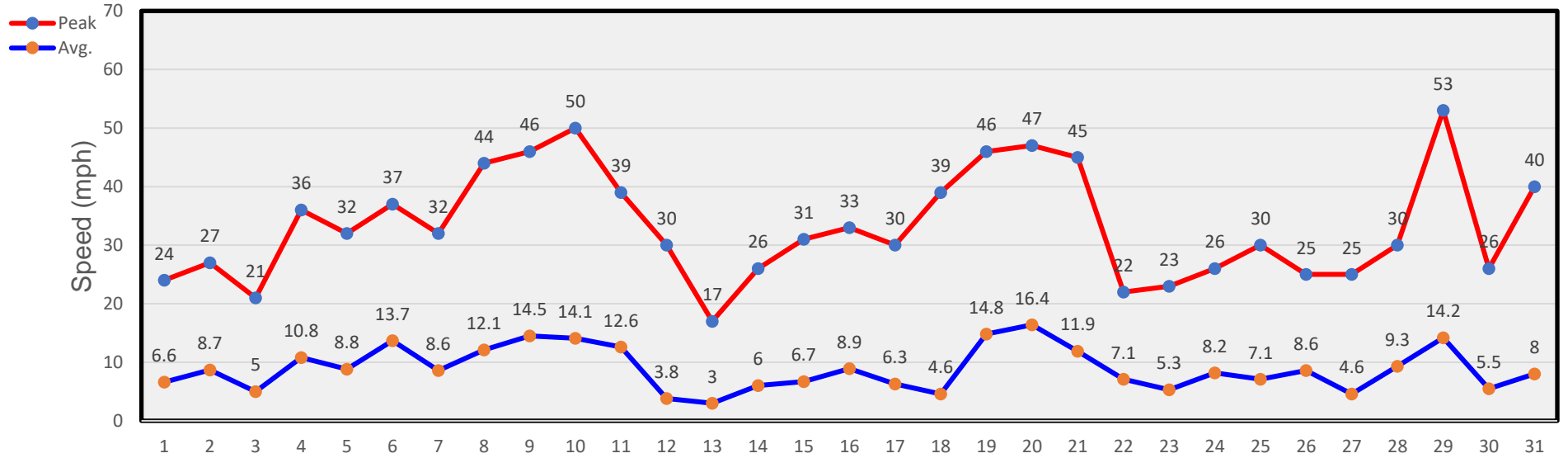
February Winds



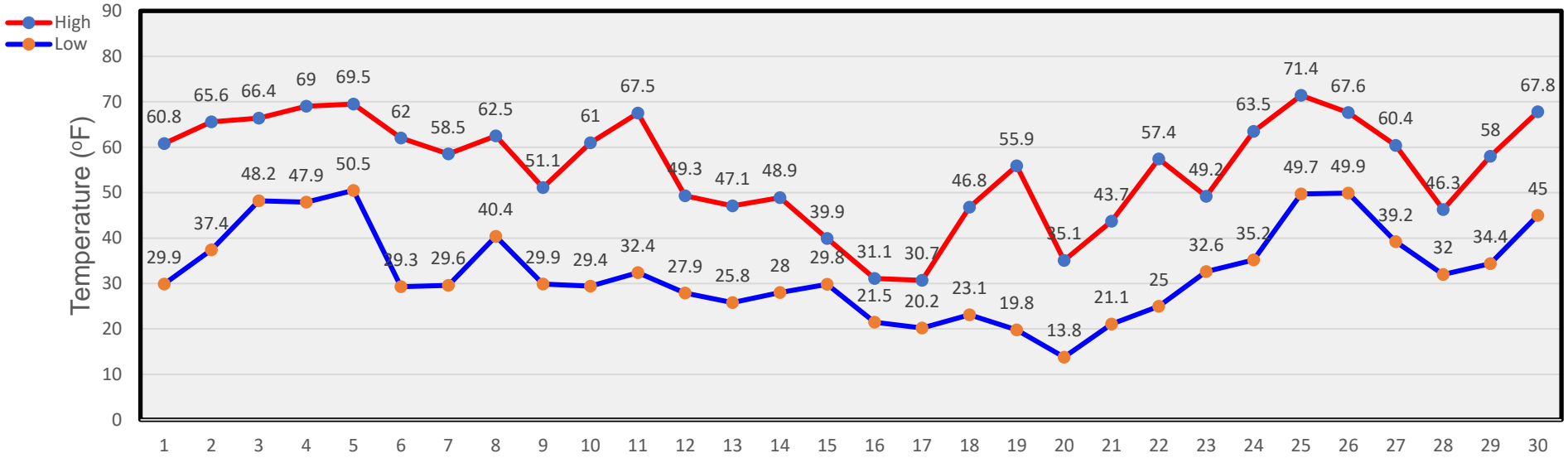
March Temperatures



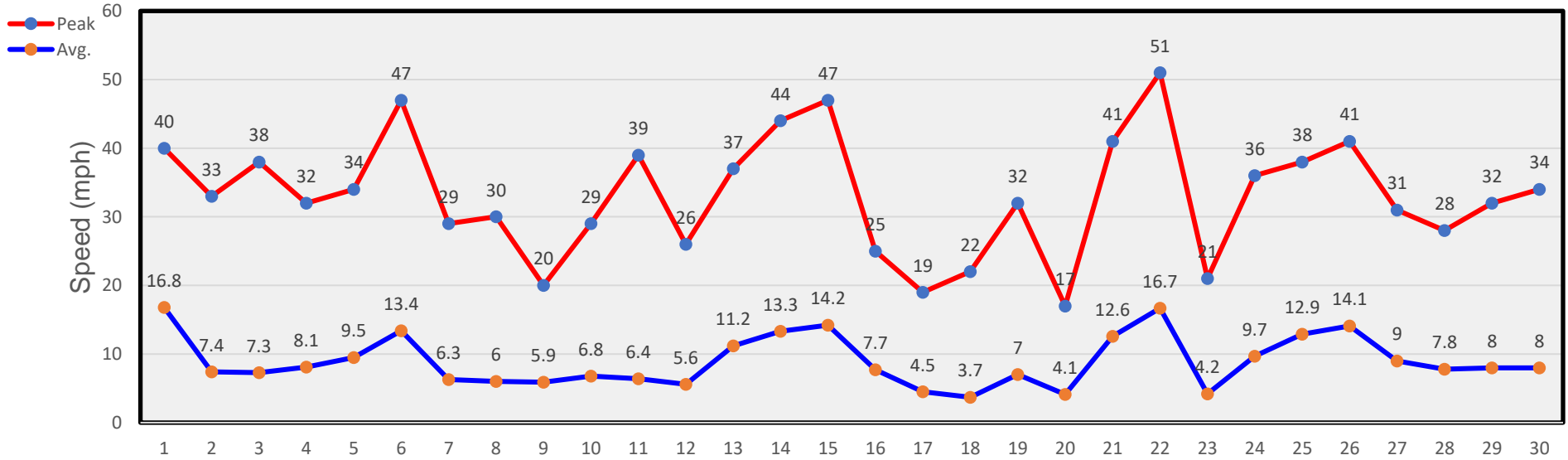
March Winds



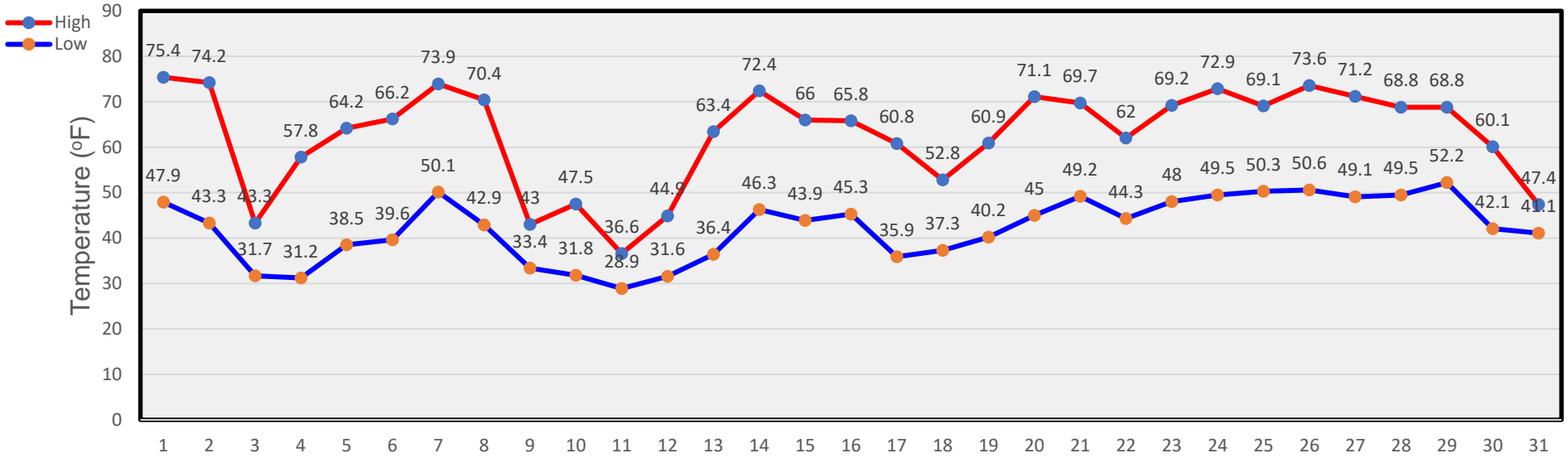
April Temperatures



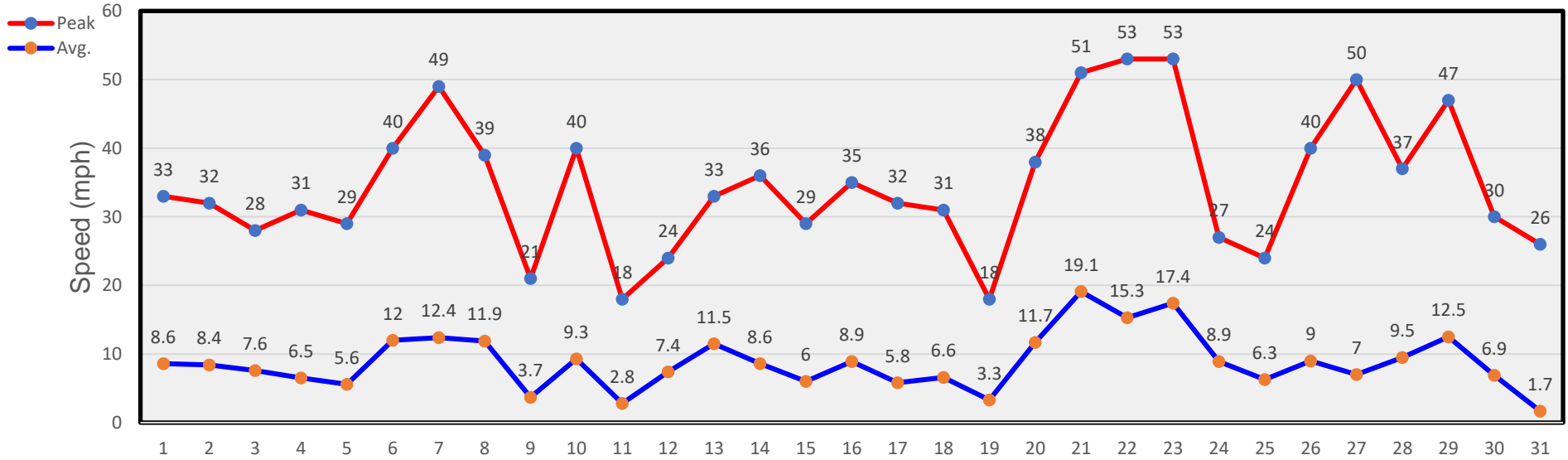
April Winds



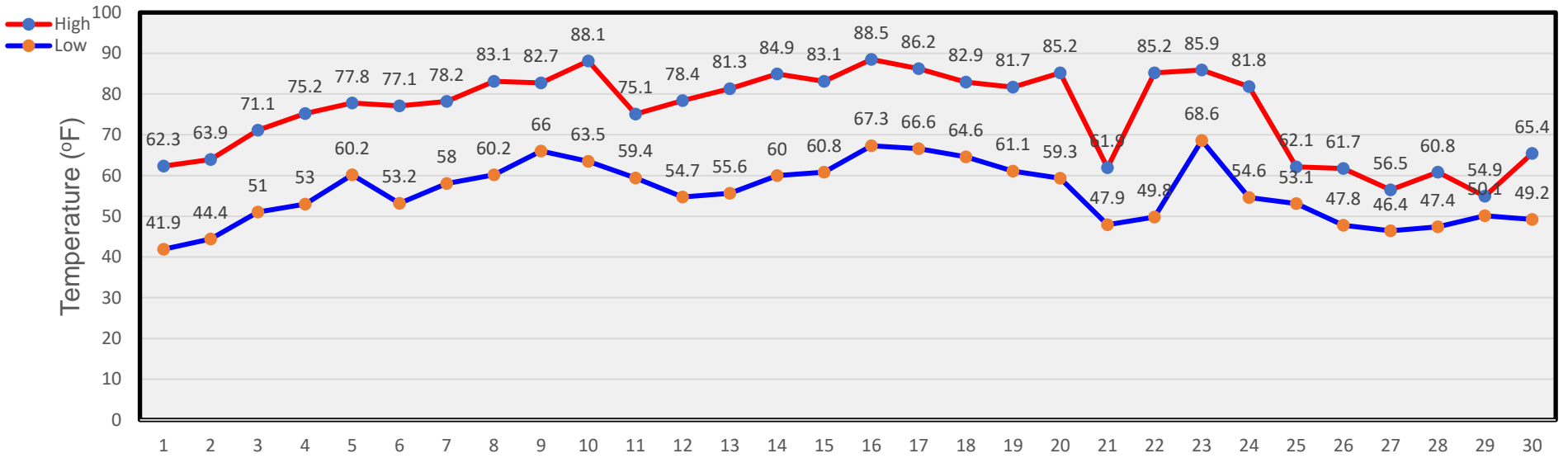
May Temperatures



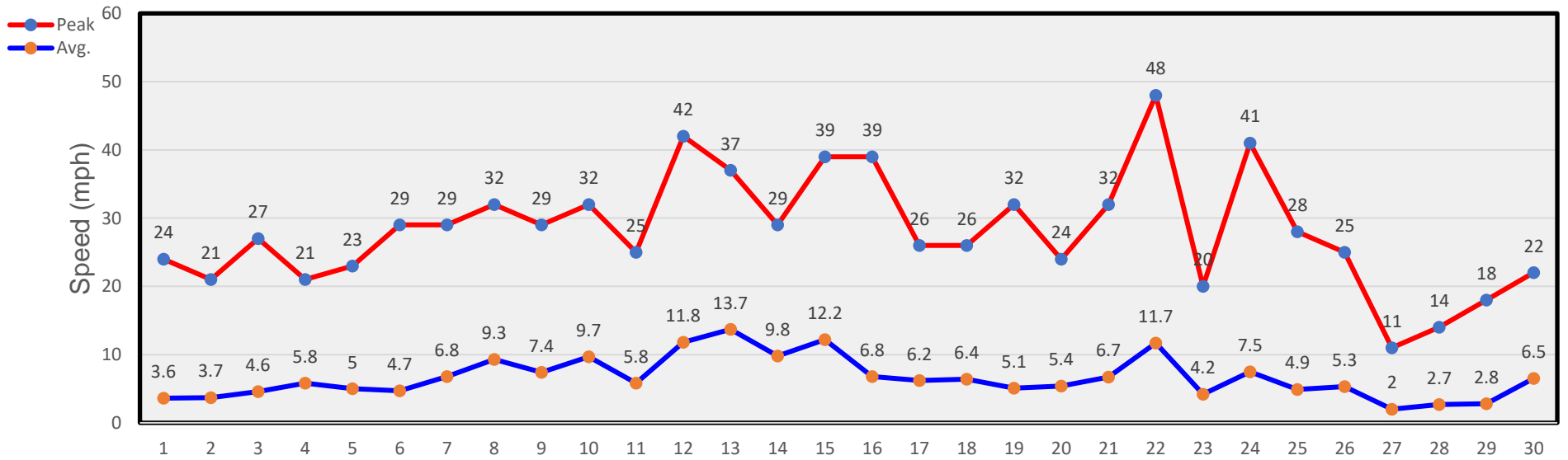
May Winds



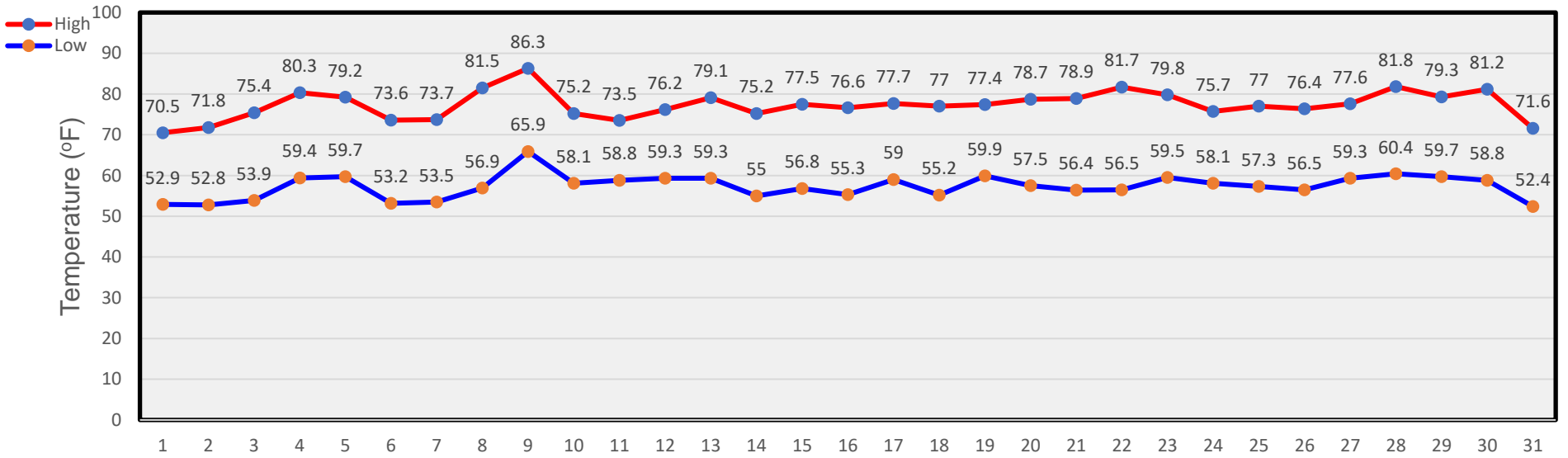
June Temperatures



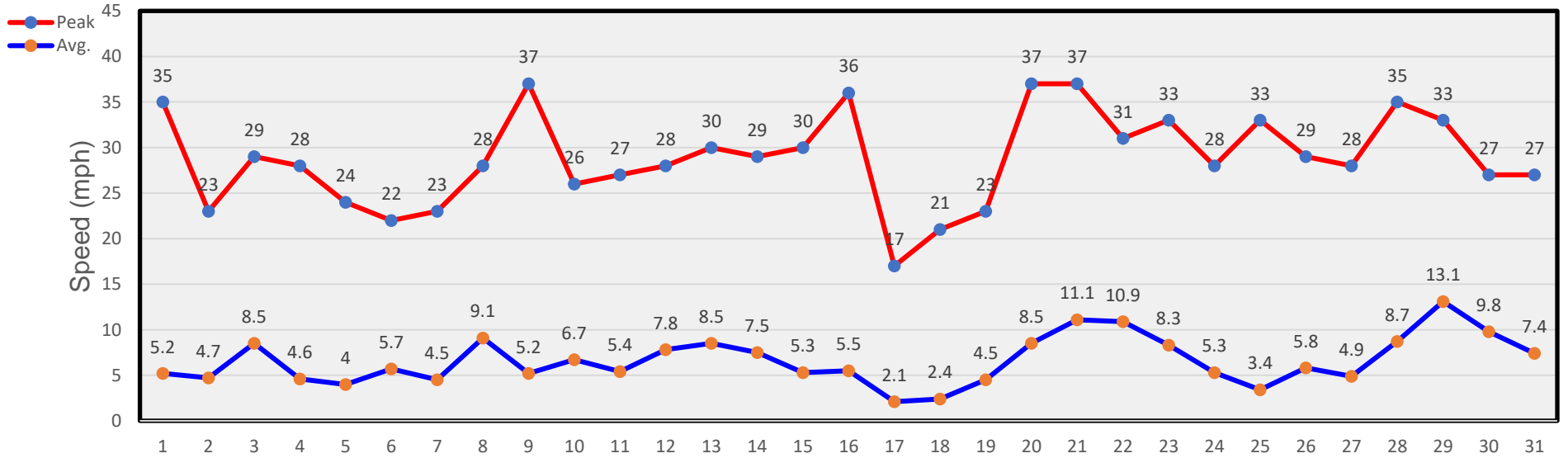
June Winds



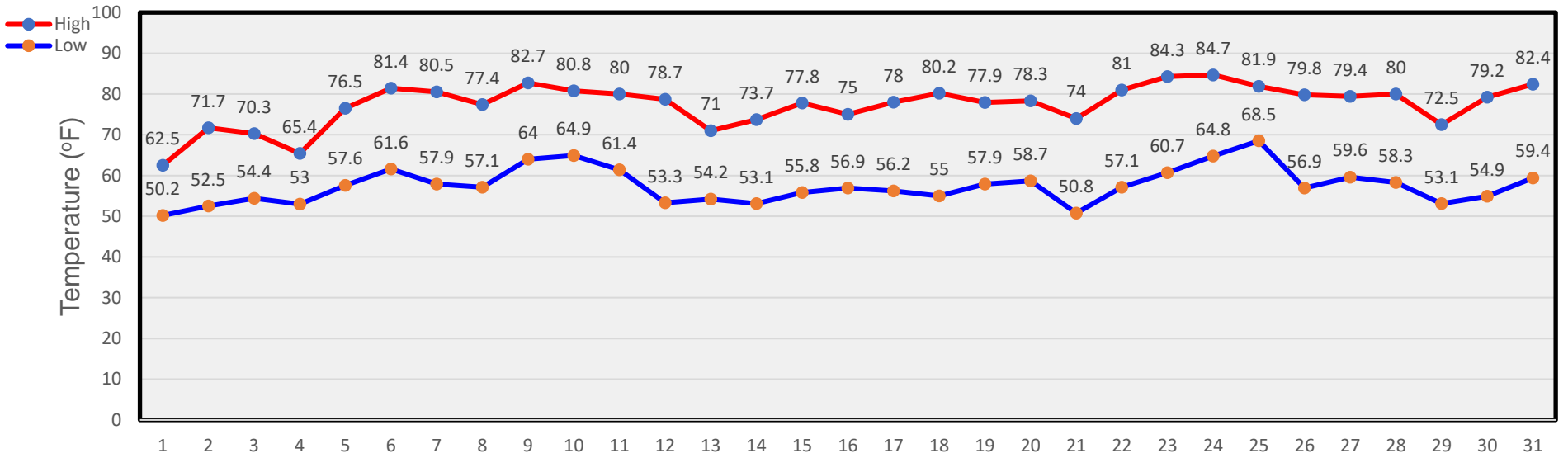
July Temperatures



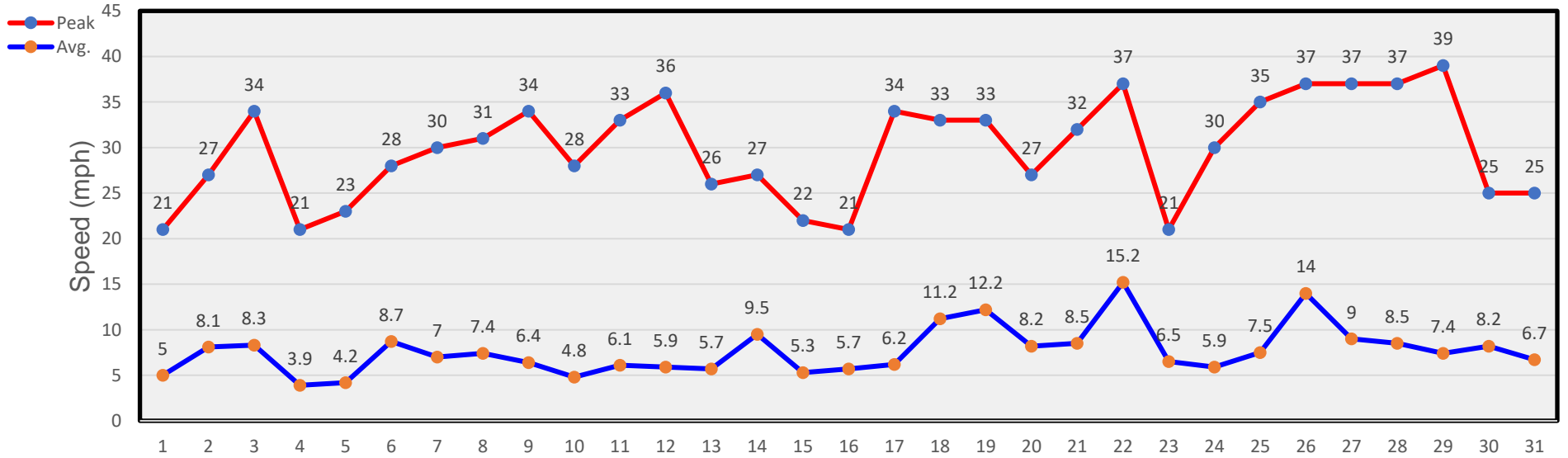
July Winds



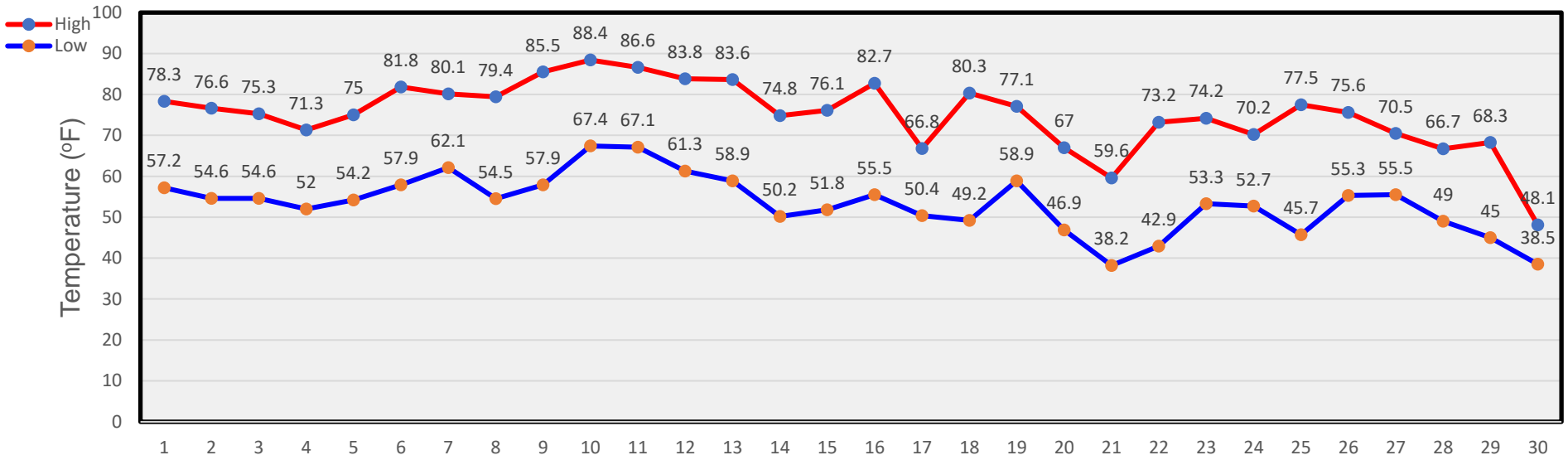
August Temperatures



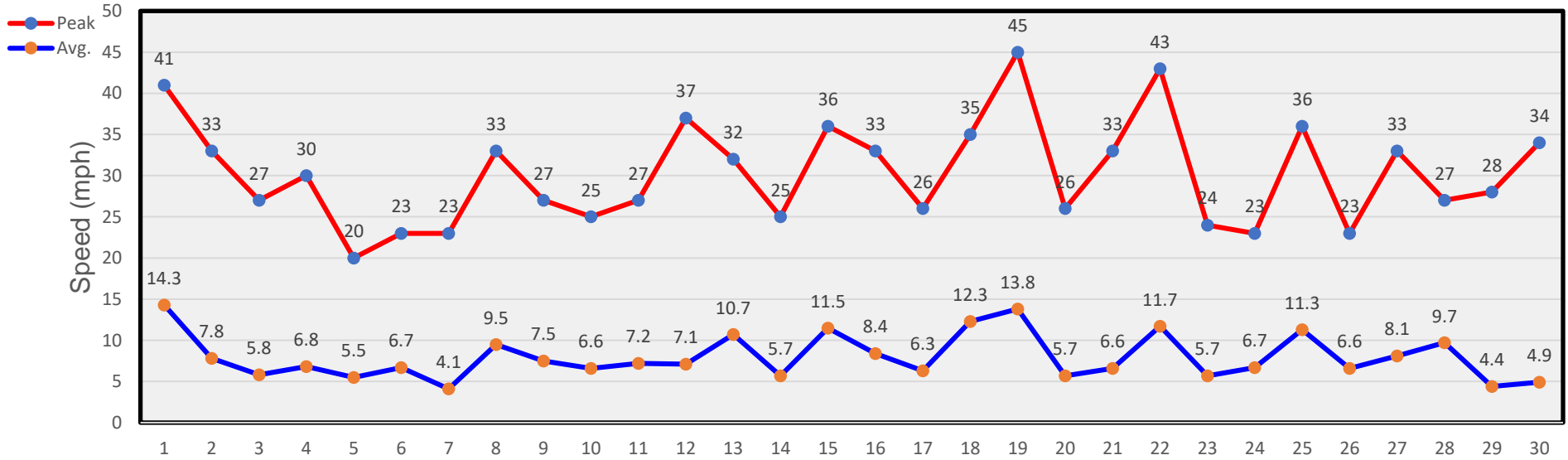
August Winds



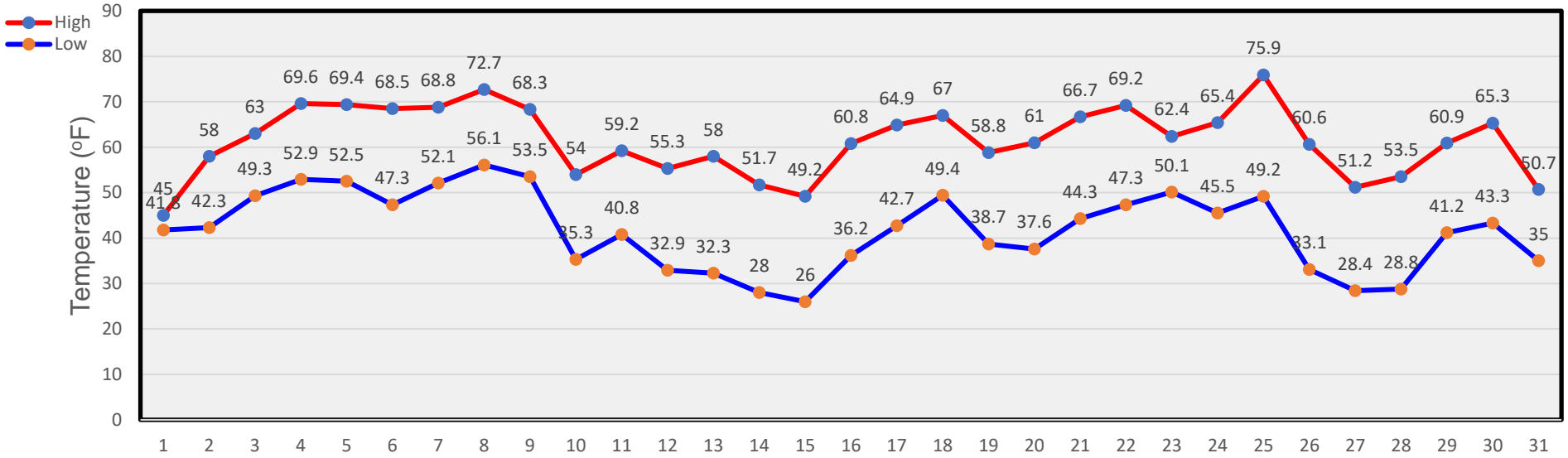
September Temperatures



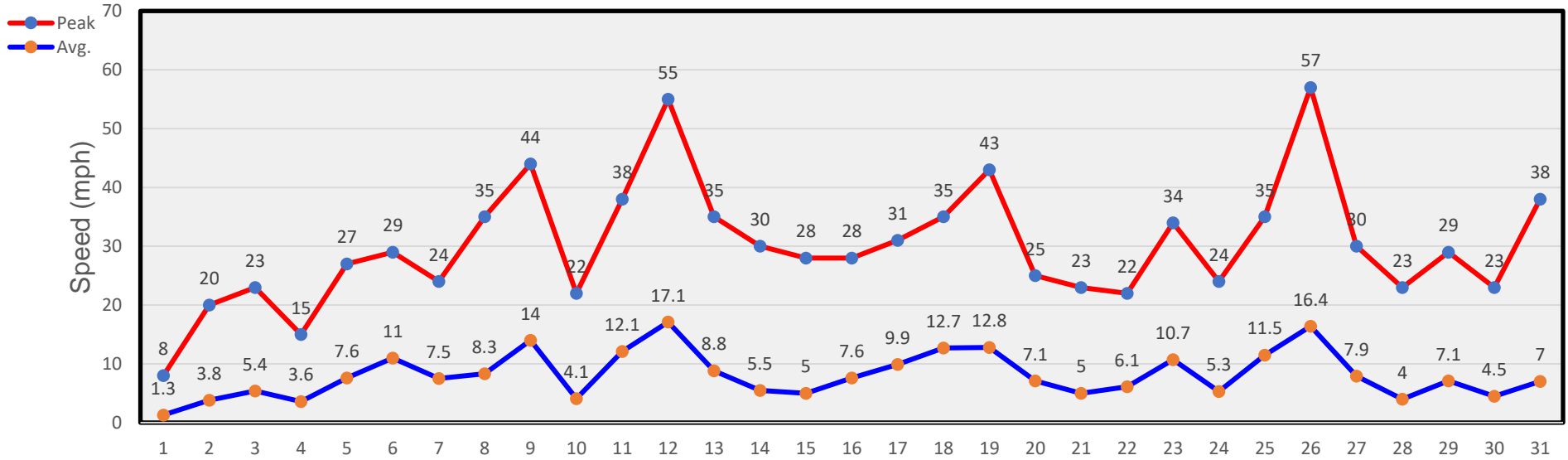
September Winds



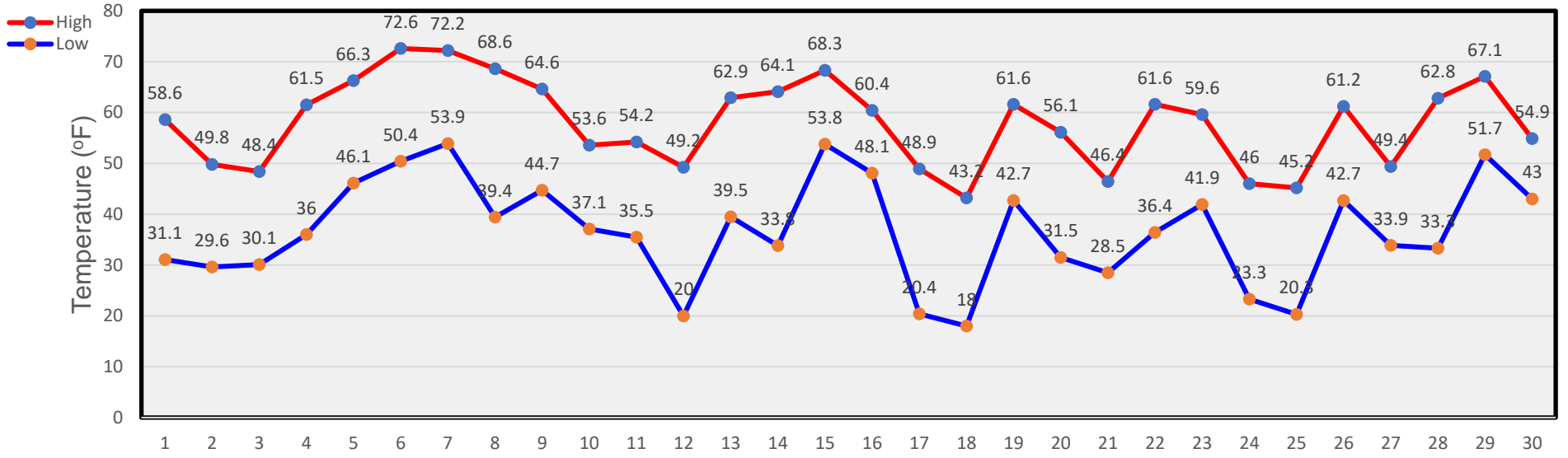
October Temperatures



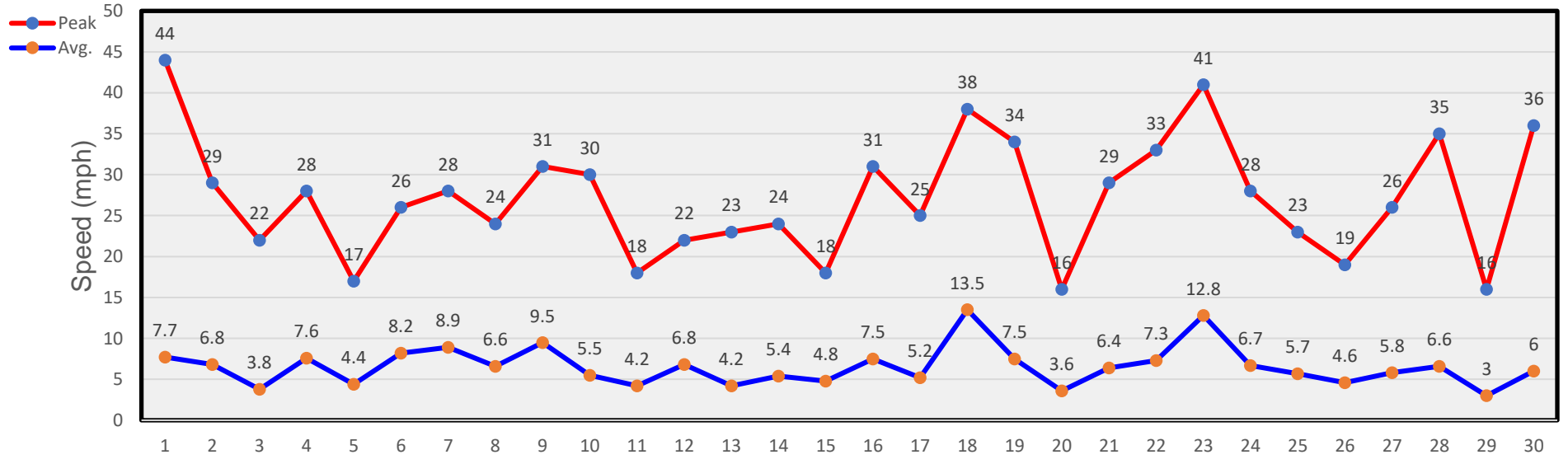
October Winds



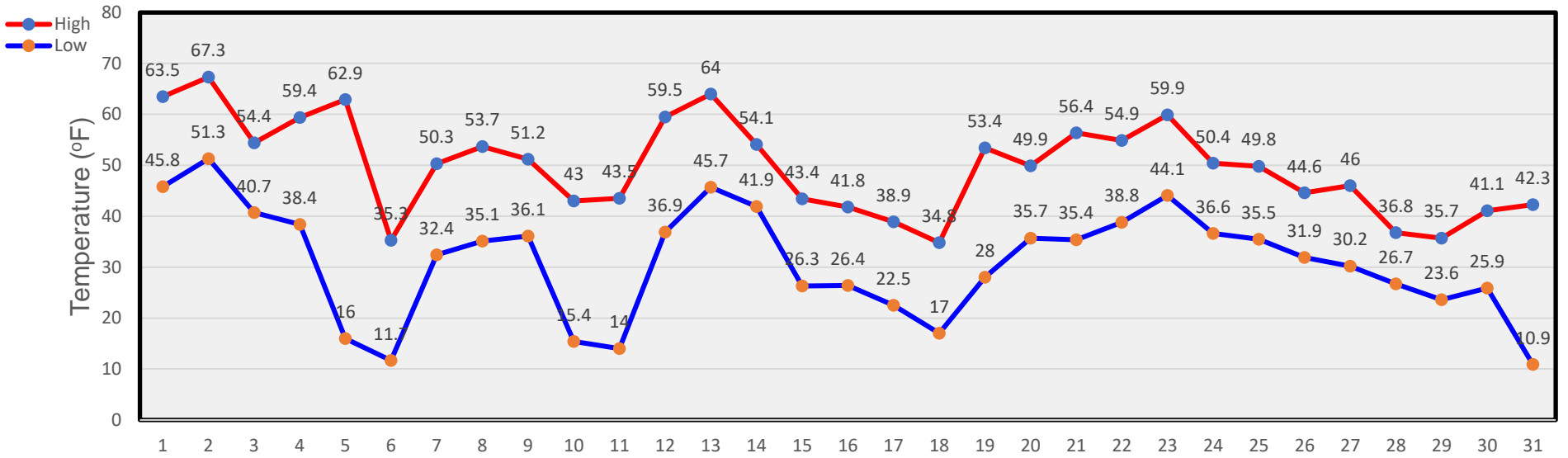
November Temperatures



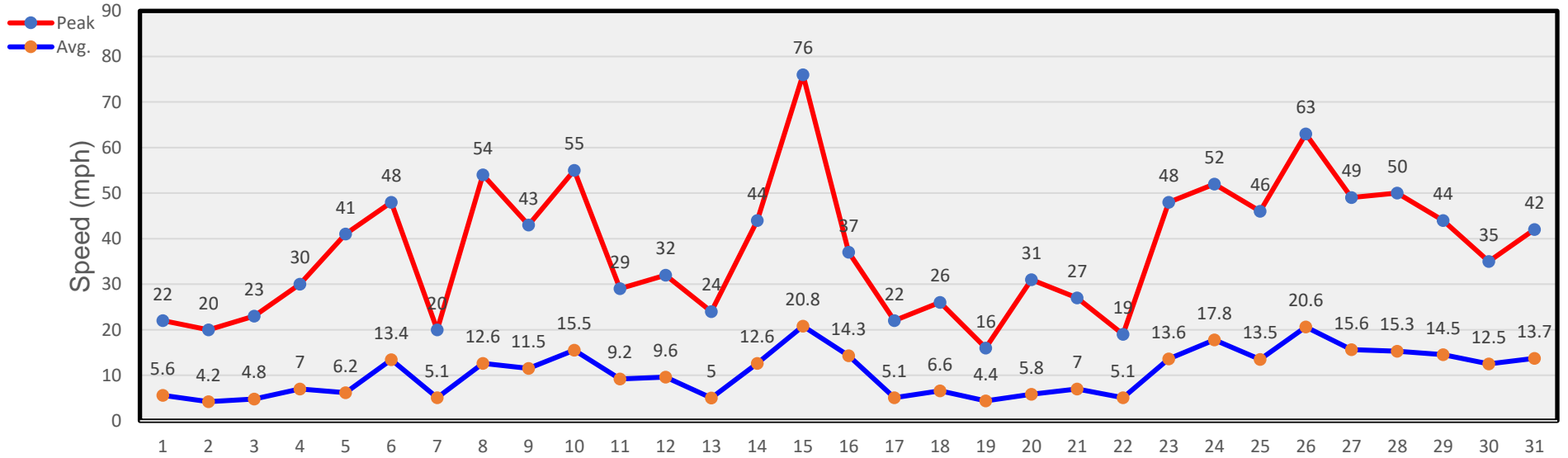
November Winds



December Temperatures



December Winds



Tables

January

Day	Mean Temp.	High Temp.	High Temp. Time	Low Temp.	Low Temp. Time	Heat Degree Days	Cool Degree Days	Precip.	Average Wind Speed	Peak Wind Speed	Peak Wind Time	Wind Dominant Direction
1	25.7	31.5	12:30p	20.1	7:45a	39.3			5.4	23	5:50a	NE
2	32.5	45.6	3:45p	20.9	5:45a	32.5			5.5	24	12:15a	NW
3	38.5	48.9	2:15p	31.1	2:30a	26.5			4.8	20	8:00p	S
4	37.3	45.8	1:30p	30.9	10:15p	27.7			9.7	41	7:45p	S
5	39.0	49.7	10:30a	24.6	11:45p	26.0			11.9	39	10:45a	SW
6	27.4	36.6	4:30p	19.4	7:30a	37.6			4.4	21	3:15a	NE
7	36.4	47.2	1:30p	26.3	12:15a	28.6			5.1	28	10:30p	S
8	29.4	39.0	2:15p	22.5	7:30a	35.6			4.7	36	11:45p	NNW
9	21.9	26.6	10:30a	18.0	11:45p	43.1			4.1	31	12:15a	NE
10	19.2	26.1	12:45p	15.5	8:30p	45.8		.50	4.3	22	1:30p	SSW
11	30.5	39.7	3:30p	23.8	12:15a	34.5			2.9	14	8:15p	N
12	40.0	50.1	12:30p	30.5	12:30a	25.0			3.7	16	7:45p	SSW
13	48.8	58.7	2:15p	41.6	12:15a	16.2			4.8	24	9:15p	NW
14	28.2	44.4	12:15a	13.9	12:00m	36.8			6.1	37	2:30a	NNW
15	25.0	36.8	2:30p	13.0	1:30a	40.0			3.2	26	11:15p	NNW
16	35.9	41.4	8:45a	26.3	12:15a	29.1			5.1	29	11:15a	ENE
17	32.5	41.1	11:15p	23.4	3:15a	32.5			6.2	23	1:45p	S
18	29.8	43.6	2:00a	21.5	11:15p	35.2			4.7	30	6:15a	N
19	20.2	25.4	3:00p	16.8	9:30a	44.8		.63	5.0	32	6:45p	SSW
20	20.2	51.9	2:15p	21.5	12:15a	24.9			7.8	30	3:30a	SW
21	38.1	48.8	12:15p	32.1	12:00m	26.9			4.4	21	1:15p	ENE
22	33.2	43.9	1:30p	27.4	12:00m	31.8			10.9	29	4:45p	S
23	34.5	45.4	2:00p	25.2	4:00a	30.5			13.4	44	1:15p	W
24	30.7	38.6	12:45p	25.4	12:00m	34.3			11.8	35	6:15p	S
25	23.6	29.8	1:45p	17.1	7:15a	41.4			2.8	22	12:15a	ENE
26	17.7	24.3	4:15p	14.6	9:30p	47.3			6.2	28	9:45a	SW
27	26.1	34.9	2:15p	18.1	12:30a	38.9			9.9	40	3:15p	SSW
28	39.4	50.8	12:30p	29.2	12:15a	25.6			11.4	30	2:15a	SSW
29	43.0	50.2	1:15p	35.2	11:30p	22.0			13.7	35	11:15a	SW
30	35.6	44.5	2:00p	29.7	7:00a	29.4			7.3	26	3:30a	NW
31	33.5	44.6	2:45p	25.6	7:15a	31.5			5.0	24	10:00p	S
--	32.1 ¹	58.7 ³	13 th	13.0 ³	15 th	1021.3 ²	0.0 ²	1.13 ²	6.7 ¹	44 ³	23 rd	SSW

Footnotes: 1. Average; 2. Sum (total); 3. Max or Min
 Heat Base: 65.0 Cool Base: 65.0
 Method: (High + Low) / 2 (per ¼ hour)

- 10th: 5" of snow
- 19th: 6.25" of snow

February

Day	Mean Temp.	High Temp.	High Temp. Time	Low Temp.	Low Temp. Time	Heat Degree Days	Cool Degree Days	Precip.	Average Wind Speed	Peak Wind Speed	Peak Wind Time	Wind Dominant Direction
1	41.1	52.3	12:30p	30.0	2:45a	23.9			7.8	27	12:45a	S
2	49.5	58.0	2:00p	42.3	4:30a	15.5			4.8	18	12:30p	S
3	47.4	55.4	12:15p	41.1	11:45P	17.6			12.2	58	1:00P	WNW
4	27.8	42.2	12:15a	18.7	7:45a	37.2		0.08	5.9	24	3:45a	NNW
5	32.1	40.9	2:45p	24.0	1:30a	32.9			4.5	26	1:30p	SW
6	32.8	40.8	3:00p	25.7	6:45a	32.2			8.4	28	1:15p	NNW
7	41.9	49.8	1:45p	33.7	4:00a	23.1			6.3	25	10:30a	NW
8	42.5	50.6	2:30p	34.4	4:00a	22.5			10.0	38	2:45p	WNW
9	45.5	53.5	12:15p	40.7	7:45a	19.5			7.3	27	11:15p	WSW
10	38.2	47.6	11:00a	25.8	4:45p	26.8			6.0	28	8:45p	SW
11	36.8	54.0	3:15p	11.3	12:00m	28.2			3.9	18	12:45p	SW
12	16.9	33.2	4:15[p	7.8	9:15p	48.1			7.3	29	2:30a	SSW
13	10.3	20.6	2:30a	-1.1	11:45p	52.4			4.6	24	2:30p	SSW
14	-5.8	-0.2	1:45p	-8.7	7:15a	70.8		0.45	2.9	13	12:00m	NE
15	11.4	25.4	3:00p	-9.7	3:00a	53.6			6.2	31	7:30p	SSW
16	27.1	33.6	12:00p	21.4	1:00a	37.9			4.8	19	11:45a	ENE
17	21.5	29.1	10:45a	13.3	12:00m	43.5		0.97	3.8	19	11:15a	SW
18	17.4	25.0	1:45p	10.2	5:15a	47.6			4.1	19	1:45p	SSW
19	33.1	47.9	2:45p	15.2	12:30a	31.9			5.9	25	12:00p	SSW
20	39.8	51.5	2:15p	27.7	12:00m	25.2			12.6	44	2:15p	SW
21	28.2	36.7	4:45p	21.1	6:45a	36.8			5.3	25	2:30a	ENE
22	42.2	51.7	2:45p	29.3	12:15a	22.8			5.6	27	11:30p	SSE
23	46.2	63.0	1:15p	30.1	12:00m	18.8			9.3	32	8:15a	S
24	28.6	37.7	4:00p	21.8	6:15a	36.4			10.8	41	5:45p	SSW
25	24.8	33.4	2:30p	19.4	6:45a	40.2			11.1	40	7:00p	SSW
26	35.7	47.3	3:15p	20.6	1:30a	29.3			9.0	34	12:15a	NW
27	36.2	45.1	1:15p	20.7	12:00m	28.8			15.4	47	1:15p	W
28	21.3	26.1	10:45a	17.9	4:45a	43.7			3.8	18	11:00a	WSW
--	31.1 ¹	63.0 ³	23 rd	-9.7 ³	15 th	947.2 ²	0.0 ²	1.50 ²	7.1 ¹	58 ³	3 rd	SW

Footnotes: 1. Average; 2. Sum (total); 3. Max or Min
 Heat Base: 65.0 Cool Base: 65.0
 Method: (High + Low) / 2 (per ¼ hour)

- 4th: Just a little snow, about ¾".
- 14th: More snow this time, about 4 ½".
- 17th: Much more snow, about 9 ¾"; time to shovel ... again!

March

Day	Mean Temp.	High Temp.	High Temp. Time	Low Temp.	Low Temp. Time	Heat Degree Days	Cool Degree Days	Precip.	Average Wind Speed	Peak Wind Speed	Peak Wind Time	Wind Dominant Direction
1	29.2	42.0	2:30p	17.9	5:00a	35.8			6.6	24	8:45p	SSW
2	44.7	57.3	2:45p	28.6	1:30a	20.3			8.7	27	4:15p	SSW
3	46.3	57.4	3:30p	34.6	6:45a	18.7			5.0	21	4:30p	ENE
4	38.1	47.8	1:15p	29.0	8:00p	26.9			10.8	36	2:15p	N
5	36.1	44.6	3:30p	29.0	4:00a	28.9		0.10	8.8	32	6:15a	NE
6	40.6	52.8	3:30p	32.1	2:45a	24.4			13.7	37	4:45p	SSW
7	48.4	60.4	2:45p	32.2	1:15a	16.6			8.6	32	8:30p	S
8	50.2	57.2	11:15a	44.0	12:15a	14.8			12.1	44	4:00p	SSW
9	47.3	56.8	12:45p	36.5	11:30p	17.7			14.5	46	11:45p	SW
10	35.8	42.1	3:30p	30.7	6:45a	29.2			14.1	50	12:30a	WNW
11	37.5	46.5	3:15p	28.1	6:30a	27.5			12.6	39	11:45a	SSW
12	35.1	50.3	1:00p	28.6	6:30a	30.0			3.8	30	1:00p	NNW
13	27.5	30.0	12:15a	24.3	11:15p	36.7		1.38	3.0	17	1:45p	N
14	25.2	34.0	1:45p	21.1	10:15p	38.1			6.0	26	3:45p	ENE
15	35.2	50.9	4:00p	19.5	4:30a	29.8			6.7	31	3:45p	W
16	35.6	46.1	1:45p	23.8	12:00m	29.4			8.9	33	8:30p	SW
17	24.1	29.4	5:45p	21.0	12:00m	40.9			6.3	30	1:30a	NE
18	34.1	48.3	4:45p	21.0	12:15a	30.9		0.07	4.6	39	11:15p	NW
19	40.8	54.2	5:00p	28.0	7:45a	24.2			14.8	46	3:15a	S
20	50.4	63.6	4:15p	35.7	4:30a	14.6			16.4	47	12:00m	SW
21	45.9	57.3	3:00p	30.5	12:00m	19.1			11.9	45	12:15a	W
22	26.6	30.6	12:15a	25.1	9:45a	38.4			7.1	22	11:15a	NE
23	28.7	35.1	3:00p	24.2	6:30a	36.3		0.30	5.3	23	10:15p	ENE
24	24.9	29.2	3:30p	21.7	12:00m	40.1			8.2	26	1:30a	NE
25	32.3	43.1	4:00p	21.0	1:00a	32.7			7.1	30	11:30p	WSW
26	35.7	45.3	3:00p	29.0	7:45a	29.3			8.6	25	4:00p	W
27	36.8	44.3	5:45p	31.0	1:30a	28.2			4.6	25	11:15a	ENE
28	44.7	61.9	4:30p	29.2	6:00a	20.3			9.3	30	8:15a	S
29	55.2	65.4	2:00p	46.8	12:45a	9.8			14.2	53	4:45p	WSW
30	29.0	52.6	12:15a	19.6	6:45a	36.0			5.5	26	3:15a	NNW
31	33.6	48.5	4:30p	20.2	12:30a	31.4			8.0	40	11:30p	SSW
--	37.3 ¹	65.4 ³	29 th	17.9 ³	1 st	857.0 ²	0.0 ²	1.85 ²	8.9 ¹	53 ³	29 th	SSW

Footnotes: 1. Average; 2. Sum (total); 3. Max or Min
 Heat Base: 65.0 Cool Base: 65.0
 Method: (High + Low) / 2 (per ¼ hour)

- 5th: 1" of wet snow
- 13th: 13 ¾" of really wet snow – hard to shovel!
- 18th: ¾" of snow
- 23rd: 3" of wet snow; melted quickly.

April

Day	Mean Temp.	High Temp.	High Temp. Time	Low Temp.	Low Temp. Time	Heat Degree Days	Cool Degree Days	Precip.	Average Wind Speed	Peak Wind Speed	Peak Wind Time	Wind Dominant Direction
1	42.8	60.8	4:30p	29.9	7:00a	22.2			16.8	40	12:15a	S
2	53.8	65.6	1:00p	37.4	2:30a	11.2			7.4	33	1:30a	SSW
3	56.5	66.4	12:45p	48.2	7:00a	8.5			7.3	38	12:30p	S
4	58.6	69.0	1:30p	47.9	4:30a	6.8	0.4		8.1	32	12:15a	SSW
5	59.9	69.5	3:15p	50.5	2:30a	5.7	0.6		9.5	34	3:00p	WSW
6	51.0	62.0	2:15p	29.3	12:00m	14.0			13.4	47	4:30p	WNW
7	44.0	58.5	4:15p	29.6	12:15a	21.0			6.3	29	2:30a	NW
8	51.8	62.5	2:00p	40.4	12:15a	13.2			6.0	30	1:00p	NW
9	44.1	51.1	3:15p	29.9	11:45p	20.9			5.9	20	5:15a	NW
10	45.7	61.0	4:15p	29.4	1:00a	19.3			6.8	29	3:15p	WNW
11	52.3	67.5	4:30p	32.4	12:00m	12.8	0.1		6.4	39	7:00p	NW
12	36.1	49.3	3:30p	27.9	5:30a	28.9			5.6	26	3:00p	W
13	36.0	47.1	4:45p	25.8	6:30a	29.0			11.2	37	3:00p	SSW
14	37.8	48.9	3:30p	28.0	7:00a	27.2			13.3	44	2:00p	SSW
15	34.8	39.9	5:00p	29.8	12:00m	30.2		0.40	14.2	47	6:15p	SSW
16	24.6	31.1	12:15a	21.5	11:45p	40.4			7.7	25	1:30p	NE
17	24.2	30.7	4:15p	20.2	4:00a	40.8			4.5	19	12:15a	NE
18	34.8	46.8	4:00p	23.1	3:30a	30.2			3.7	22	2:15p	ENE
19	39.4	55.9	2:45p	19.8	12:00m	25.6			7.0	32	6:15p	SSW
20	22.4	35.1	5:45p	13.8	6:30a	42.6		0.01	4.1	17	12:45a	NE
21	32.6	43.7	2:45p	21.1	6:15a	32.4			12.6	41	4:15p	SSW
22	40.7	57.4	4:30p	25.0	7:15a	24.3			16.7	51	7:30a	S
23	38.7	49.2	10:15a	32.6	3:45a	26.3		0.03	4.2	21	1:00p	NW
24	50.2	63.5	3:45p	35.2	12:15a	14.8			9.7	36	1:15p	W
25	60.7	71.4	4:15p	49.7	6:00a	5.6	1.3		12.9	38	5:45p	W
26	58.1	67.6	2:30p	49.9	5:45a	7.0	0.1		14.1	41	10:00a	WSW
27	51.0	60.4	2:45p	39.2	12:00m	14.0			9.0	31	12:00p	W
28	38.2	46.3	2:45p	32.0	7:15a	26.8		0.10	7.8	28	2:30p	NE
29	47.2	58.0	5:15p	34.4	2:00a	17.8			8.0	32	11:00a	ENE
30	55.7	67.8	4:30p	45.0	4:45a	9.6	0.2		8.0	34	8:30p	SSW
--	44.1 ¹	71.4 ³	25 th	13.8 ³	20 th	629.1 ²	2.7 ²	0.54 ²	8.9 ¹	51 ³	22 nd	SSW

Footnotes: 1. Average; 2. Sum (total); 3. Max or Min
 Heat Base: 65.0 Cool Base: 65.0
 Method: (High + Low) / 2 (per ¼ hour)

- 15th: 4" of wet snow
- 30th: Received only about 1/3rd of normal moisture this month; however, we're still about 1" ahead for the year.

May

Day	Mean Temp.	High Temp.	High Temp. Time	Low Temp.	Low Temp. Time	Heat Degree Days	Cool Degree Days	Precip.	Average Wind Speed	Peak Wind Speed	Peak Wind Time	Wind Dominant Direction
1	61.8	75.4	4:00p	47.9	3:45a	5.8	2.6		8.6	33	9:45p	S
2	59.0	74.2	3:00p	43.3	12:00m	7.3	1.3		8.4	32	11:45p	NW
3	35.1	43.3	12:15a	31.7	4:00p	29.9		0.26	7.6	28	12:30a	NE
4	42.0	57.8	4:30p	31.2	5:45a	23.0		0.03	6.5	31	10:45p	NNE
5	49.8	64.2	2:30p	38.5	5:45a	15.2			5.6	29	7:15p	NNW
6	52.4	66.2	5:00p	39.6	12:15a	12.7			12.0	40	7:30p	SSW
7	60.8	73.9	1:00p	50.1	5:15a	5.8	1.6		12.4	49	3:45p	S
8	58.6	70.4	3:15p	42.9	12:00m	7.1	0.7		11.9	39	3:30p	WNW
9	37.3	43.0	12:15a	33.4	10:45p	27.7		0.43	3.7	21	2:00p	NNW
10	38.6	47.5	3:15p	31.8	2:00a	26.4		0.24	9.3	40	4:30p	S
11	32.1	36.6	10:00a	28.9	5:15a	32.5		0.48	2.8	18	12:30a	N
12	37.5	44.9	1:45p	31.6	12:15a	27.5		0.02	7.4	24	11:00a	SSW
13	49.3	63.4	4:30p	36.4	6:30a	15.7			11.5	33	8:45p	S
14	60.0	72.4	5:00p	46.3	6:00a	6.8	1.8		8.6	36	5:00p	SSE
15	53.1	66.0	12:00p	43.9	5:45a	12.0		0.11	6.0	29	3:30p	ENE
16	53.4	65.8	12:15p	45.3	6:00a	11.6		0.01	8.9	35	4:15a	SSW
17	46.4	60.8	1:30p	35.9	6:15p	18.4		1.56	5.8	32	2:00p	NE
18	42.0	52.8	2:00p	37.3	4:00a	22.6		0.44	6.6	31	8:45a	SSW
19	50.0	60.9	2:00p	40.2	5:00a	15.0			3.3	18	2:30p	ENE
20	59.8	71.1	4:30p	45.0	3:30a	6.6	1.4		11.7	38	12:00m	SW
21	59.2	69.7	2:30p	49.2	7:15a	6.0	0.3		19.1	51	3:15p	SSW
22	53.5	62.0	11:45a	44.3	8:15p	11.4		2.08	15.3	53	2:15p	SSW
23	58.3	69.2	4:00p	48.0	4:15a	7.3	0.5	0.47	17.4	53	1:45p	SSW
24	60.5	72.9	5:15p	49.5	6:15a	6.0	1.6		8.9	27	3:00p	SW
25	59.7	69.1	4:30p	50.3	5:30a	5.9	0.6		6.3	24	5:15p	SSW
26	61.1	73.6	4:00p	50.6	5:30a	5.3	1.5		9.0	40	2:45p	SSW
27	58.8	71.2	4:15p	49.1	6:45a	6.5	0.3	0.01	7.0	50	6:45p	NW
28	56.5	68.8	11:45a	49.5	5:45a	8.6	0.1	0.08	9.5	37	4:15p	SSW
29	60.3	68.8	5:30p	52.2	12:30a	5.2	0.5		12.5	47	2:30p	SSW
30	50.0	60.1	11:45a	42.1	11:45p	15.0		1.99	6.9	30	1:30p	SSE
31	43.6	47.4	12:45p[41.1	7:00a	21.4		0.13	1.7	26	7:15a	ENE
--	51.6 ¹	75.4 ³	1 st	28.9 ³	11 th	428.2 ²	14.8 ²	8.34 ²	8.8 ¹	53 ³	22 nd	SSW

Footnotes: 1. Average; 2. Sum (total); 3. Max or Min
 Heat Base: 65.0 Cool Base: 65.0
 Method: (High + Low) / 2 (per ¼ hour)

- 17th-18th: 2" of rain/hail from one storm
- 22nd-23rd: Over 2-1/2" of rain from one storm
- 30th: Another big 2" storm; the roads are suffering!
- 31st: 8.34" of precipitation (mainly rain) for the month – almost 3" more than the most ever recorded going back to the beginning of Ranch records (2000)!

June

Day	Mean Temp.	High Temp.	High Temp. Time	Low Temp.	Low Temp. Time	Heat Degree Days	Cool Degree Days	Precip.	Average Wind Speed	Peak Wind Speed	Peak Wind Time	Wind Dominant Direction
1	49.6	62.3	2:45p	41.9	3:45a	15.4		0.12	3.6	24	3:00p	ENE
2	56.3	63.9	6:00p	44.4	12:15a	8.7			3.7	21	3:15p	ENE
3	60.6	71.1	3:00p	51.0	5:30a	5.5	1.1		4.6	27	3:00p	ENE
4	64.7	75.2	3:15p	53.0	3:30a	3.4	3.2		5.8	21	1:15a	ENE
5	69.8	77.8	1:30p	60.2	1:45a	0.7	5.5		5.0	23	12:30p	ENE
6	66.7	77.1	2:00p	53.2	8:15p	1.9	3.6	0.06	4.7	29	5:45p	ENE
7	67.7	78.2	1:00p	58.0	1:15a	1.2	3.9	0.04	6.8	29	5:30p	SSW
8	72.4	83.1	5:30p	60.2	6:30a	0.8	8.2		9.3	32	12:45p	SW
9	72.8	82.7	5:15p	66.0	12:00m		7.8		7.4	29	11:15p	SW
10	75.5	88.1	3:45p	63.5	2:30a	0.1	10.7		9.7	32	3:30a	SW
11	68.9	75.1	4:15p	59.4	11:45p	0.4	4.3		5.8	25	8:00a	W
12	66.2	78.4	3:30p	54.7	6:00a	2.8	4.0		11.8	42	4:30p	SSW
13	68.8	81.3	3:00p	55.6	6:00a	2.0	5.8		13.7	37	4:30a	S
14	71.3	84.9	4:30p	60.0	5:00a	1.3	7.7		9.8	29	1:00a	S
15	71.5	83.1	3:45p	60.8	6:00a	0.5	7.0		12.2	39	2:00a	S
16	75.7	88.5	3:00p	67.3	4:30a		10.7		6.8	39	7:15p	S
17	76.1	86.2	4:45p	66.6	7:00a		11.1		6.2	26	9:15p	SSE
18	73.7	82.9	12:15p	64.6	3:30a		8.7		6.4	26	1:00a	ENE
19	69.2	81.7	1:00p	61.1	4:30p	0.1	4.3	0.59	5.1	32	5:00p	ESE
20	72.9	85.2	4:00p	59.3	12:00m	0.3	8.2	0.01	5.4	24	2:00p	NNW
21	54.7	61.9	5:30p	47.9	7:45a	10.3			6.7	32	12:00m	SW
22	68.4	85.2	2:30p	49.8	5:45a	4.6	8.1		11.7	48	2:15a	S
23	76.8	85.9	12:45p	68.6	2:45a		11.8		4.2	20	3:15p	W
24	68.9	81.8	3:15p	54.6	12:00m	1.0	4.9		7.5	41	5:30p	WSW
25	59.7	62.1	12:30p	53.1	12:00m	6.2	0.9	0.26	4.9	28	2:00p	NW
26	52.0	61.7	6:15p	47.8	10:15a	13.0		0.02	5.3	25	9:00p	ENE
27	50.7	56.5	6:15p	46.4	6:30a	14.3		0.23	2.0	11	10:00a	NNW
28	53.1	60.8	5:45p	47.4	4:30a	11.9			2.7	14	4:45p	N
29	52.1	54.9	1:00p	50.1	7:00a	12.9		0.30	2.8	18	10:45p	S
30	55.9	65.4	3:15p	49.2	3:45a	9.1		0.14	6.5	22	1:15P	SSW
--	65.4 ¹	88.5 ³	16 th	41.9 ³	1 st	128.5 ²	141.5 ²	1.77 ²	6.6 ¹	48 ³	22 nd	SSW

Footnotes: 1. Average; 2. Sum (total); 3. Max or Min
 Heat Base: 65.0 Cool Base: 65.0
 Method: (High + Low) / 2 (per ¼ hour)

- 30th: June precipitation finished the month about ¼" above normal; it's been that way for 6 out of the last 7 months. Good for the vegetation!
- June's mean temperature (65.4) was 1° below normal.

July

Day	Mean Temp.	High Temp.	High Temp. Time	Low Temp.	Low Temp. Time	Heat Degree Days	Cool Degree Days	Precip.	Average Wind Speed	Peak Wind Speed	Peak Wind Time	Wind Dominant Direction
1	59.6	70.5	12:30p	52.9	11:15p	5.8	0.5	0.65	5.2	35	9:45p	SSE
2	60.9	71.8	3:15p	52.8	2:30a	5.1	0.9	0.02	4.7	23	9:00p	S
3	63.1	75.4	2:45p	53.9	5:45a	4.1	2.1		8.5	29	3:45a	SSE
4	68.8	80.3	3:00p	59.4	3:00a	1.4	5.2	0.16	4.6	28	7:15p	ENE
5	68.8	79.2	3:00p	59.7	1:45a	0.9	4.7		4.0	24	11:45p	SW
6	61.3	73.6	12:45p	53.2	11:15p	4.8	1.1	0.78	5.7	22	1:30a	ENE
7	64.7	73.7	5:00p	53.5	12:30a	2.8	2.5		4.5	23	11:00p	ENE
8	69.4	81.5	2:45p	56.9	5:30a	2.1	6.4		9.1	28	1:45a	SSW
9	75.4	86.3	1:30p	65.9	1:30a		10.4		5.2	37	9:15p	ENE
10	67.8	75.2	4:15a	58.1	8:15a	1.0	3.8		6.7	26	6:15a	ENE
11	64.9	73.5	4:00p	58.8	12:00m	2.0	2.0		5.4	27	10:15p	ENE
12	66.0	76.2	3:45p	59.3	5:30a	2.8	3.8		7.8	28	12:30a	SSW
13	66.8	79.1	3:45p	59.3	8:15p	1.8	3.6	0.02	8.5	30	12:00m	SSE
14	62.6	75.2	12:45p	55.0	5:45p	4.2	1.7	0.07	7.5	29	12:15a	SSW
15	65.3	77.5	4:15p	56.8	12:45a	2.7	3.0		5.3	30	6:30p	SSW
16	64.2	76.6	11:15a	55.3	6:00a	2.8	2.0	0.60	5.5	36	12:45p	SSW
17	66.8	77.7	12:45p	59.0	4:15a	1.9	3.7	0.05	2.1	17	1:45a	NW
18	66.2	77.0	5:00p	55.2	6:30	2.7	3.9		2.4	21	9:00p	ENE
19	67.7	77.4	4:00p	59.9	6:00a	1.5	4.2		4.5	23	10:30p	E
20	67.4	78.7	3:30p	57.5	6:15a	2.2	4.6		8.5	37	12:00m	S
21	66.1	78.9	4:00p	56.4	7:30a	2.8	3.9		11.1	37	12:30a	SSE
22	68.6	81.7	4:30p	56.5	5:30a	2.0	5.6		10.9	31	11:00p	SSE
23	67.7	79.8	2:45p	59.5	6:15a	1.5	4.1	0.01	8.3	33	12:45a	SSE
24	65.7	75.7	2:30p	58.1	12:00m	1.6	2.3		5.3	28	3:15p	ENE
25	64.7	77.0	2:00p	57.3	12:45a	2.8	2.5	0.01	3.4	33	2:45p	SW
26	64.4	76.4	1:45p	56.5	1:15a	2.7	2.0	0.94	5.8	29	11:45p	SW
27	65.7	77.6	2:00p	59.3	3:15a	1.4	2.0	0.02	4.9	28	12:15a	SSW
28	70.6	81.8	4:45p	60.4	5:30a	0.8	6.4		8.7	35	10:45p	SSW
29	68.9	79.3	4:00p	59.7	6:15a	1.2	5.1		13.1	33	1:15a	SSE
30	69.7	81.2	3:30p	58.8	6:00a	1.3	6.1		9.8	27	11:15p	SSW
31	62.2	71.6	2:30p	52.4	11:00p	3.6	0.8	0.32	7.4	27	3:45p	ENE
--	66.2 ¹	86.3 ³	9 th	52.4 ³	31 st	74.3 ²	110.9 ²	3.65 ²	6.6 ¹	37 ³	9 th	S

Footnotes: 1. Average; 2. Sum (total); 3. Max or Min
 Heat Base: 65.0 Cool Base: 65.0
 Method: (High + Low) / 2 (per ¼ hour)

- 26th: almost an inch of very hard rain
- 31st: The temperature averaged about 3.5° below normal; in fact, the last EIGHT months have been below normal.
- 31st: Our rainfall for the month was about .7" above normal; also, the last 7 out of 8 months have had above average precipitation. Good for the trees!

August

Day	Mean Temp.	High Temp.	High Temp. Time	Low Temp.	Low Temp. Time	Heat Degree Days	Cool Degree Days	Precip.	Average Wind Speed	Peak Wind Speed	Peak Wind Time	Wind Dominant Direction
1	55.3	62.5	5:45p	50.2	11:45a	9.7		0.43	5.0	21	4:30a	NE
2	60.2	71.7	3:45p	52.5	4:15a	5.6	0.8		8.1	27	11:30p	SSW
3	59.1	70.3	11:15a	54.4	10:30p	6.5	0.6	1.26	8.3	34	4:45p	SSE
4	59.1	65.4	5:15p	53.0	7:00a	5.9			3.9	21	1:45p	ENE
5	67.1	76.5	3:15p	57.6	4:15a	2.0	4.1		4.2	23	10:45p	E
6	71.8	81.4	2:30p	61.6	5:45a	0.5	7.4		8.7	28	12:30a	S
7	70.3	80.5	1:45p	57.9	12:00m	1.1	6.4		7.0	30	12:45p	WNW
8	68.0	77.4	4:45p	57.1	1:00a	2.1	5.1		7.4	31	12:00m	S
9	74.2	82.7	3:15p	64.0	3:00a	0.1	9.3		6.4	34	12:45a	S
10	72.8	80.8	4:15p	64.9	7:30a		7.8		4.8	28	6:15p	ENE
11	70.5	80.0	2:45p	61.4	4:00p	0.1	5.7	0.02	6.1	33	3:45p	ENE
12	67.7	78.7	1:15p	53.3	9:15p	1.6	4.4	0.59	5.9	36	7:00p	SE
13	61.5	71.0	1:15a	54.2	7:00a	4.5	1.0		5.7	26	4:45p	S
14	62.4	73.7	4:30p	53.1	4:00p	4.7	2.1		9.5	27	1:45p	SSW
15	65.0	77.8	1:45p	55.8	6:16a	2.6	2.6	0.02	5.3	22	4:30a	SSE
16	65.6	75.0	3:30p	56.9	12:00m	2.2	2.8		5.7	21	10:45p	ENE
17	67.5	78.0	3:30p	56.2	3:15a	2.0	4.6		6.2	34	12:00m	S
18	68.3	80.2	4:00p	55.0	6:45a	2.5	5.9		11.2	33	4:15a	SSE
19	67.4	77.9	2:45p	57.9	3:00a	1.7	4.1		12.2	33	10:30a	WSW
20	67.5	78.3	3:00p	58.7	12:00m	1.4	3.9		8.2	27	10:30a	W
21	62.6	74.0	4:15p	50.8	7:30a	4.4	2.0		8.5	32	9:15p	SSW
22	68.2	81.0	3:00p	57.1	5:15a	1.9	5.0		15.2	37	6:45p	S
23	72.2	84.3	5:00p	60.7	1:45a	0.4	7.7		6.5	21	5:15p	WNW
24	74.7	84.7	4:30p	64.8	7:00a		9.7		5.9	30	2:00p	WNW
25	75.4	81.9	5:00p	68.5	12:00m		10.4		7.5	35	11:00p	SSW
26	66.8	79.8	1:00p	56.9	11:00p	1.8	3.6	0.03	14.0	37	5:00a	S
27	67.6	79.4	2:00p	59.6	4:30a	1.7	4.2	0.01	9.0	37	9:30p	SSW
28	65.9	80.0	1:00p	58.3	4:00a	2.1	3.1	0.02	8.5	37	1:00a	S
29	61.0	72.5	3:00p	53.1	8:15a	4.7	0.7		7.4	39	9:30p	NE
30	65.8	79.2	4:15p	54.9	12:45a	3.1	3.9		8.2	25	8:00p	S
31	70.0	82.4	1:45p	59.4	3:15a	1.4	6.4		6.7	25	12:15a	SSW
--	66.8 ¹	84.7 ³	24 th	50.2 ³	1 st	78.3 ²	135.3 ²	2.38 ²	7.7 ¹	39 ³	29 th	SSW

Footnotes: 1. Average; 2. Sum (total); 3. Max or Min
 Heat Base: 65.0 Cool Base: 65.0
 Method: (High + Low) / 2 (per ¼ hour)

- 3rd: Very hard rain; at one point it came down at a rate of 8 ½" per hour!!
- 31st: Interesting facts: 1st, August was warmer than July (usually the other way around); 2nd, August was cooler than average (9th month in a row!); 3rd, August was drier than average, only 2nd time in the last 9 months; 4th, 2.32" in 1st half of the month, only .06" in last half.

September

Day	Mean Temp.	High Temp.	High Temp. Time	Low Temp.	Low Temp. Time	Heat Degree Days	Cool Degree Days	Precip.	Average Wind Speed	Peak Wind Speed	Peak Wind Time	Wind Dominant Direction
1	65.1	78.3	2:30p	57.2	11:15p	2.6	2.7	0.18	14.3	41	5:15p	SW
2	65.9	76.6	5:00p	54.6	6:45a	2.9	3.7		7.8	33	12:15a	W
3	64.0	75.3	5:15p	54.6	7:00a	3.6	2.6		5.8	27	9:00p	N
4	59.7	71.3	1:45p	52.0	7:15a	6.2	0.9	0.24	6.8	30	7:15p	NNW
5	64.5	75.0	3:15p	54.2	6:45a	3.4	2.8		5.5	20	11:45p	ENE
6	69.3	81.8	1:45p	57.9	6:15a	1.9	6.1		6.7	23	4:30a	S
7	70.7	80.1	2:15p	62.1	12:00m	0.1	5.8		4.1	23	3:45p	ENE
8	66.8	79.4	4:30p	54.5	7:15a	2.6	4.4		9.5	33	10:00	SSW
9	71.6	85.5	4:15p	57.9	6:15a	1.5	8.1		7.5	27	4:00a	SSE
10	76.5	88.4	2:00p	67.4	2:45a		11.5		6.6	25	10:00p	SSE
11	76.7	86.6	1:45p	67.1	11:45p		11.7		7.2	27	2:30p	SW
12	71.2	83.8	4:45p	61.3	7:00a	0.4	6.6		7.1	37	8:45p	S
13	70.0	83.6	3:45p	58.9	4:00a	1.4	6.4		10.7	32	1:45a	SSW
14	60.1	74.8	2:15p	50.2	10:45p	6.3	1.4	0.09	5.7	25	5:45p	ENE
15	63.0	76.1	3:45p	51.8	4:00a	4.5	2.5		11.5	36	6:15p	S
16	68.2	82.7	3:15p	55.5	6:00a	2.5	5.8		8.4	33	12:15a	WNW
17	59.3	66.8	2:30a	50.4	7:30a	5.9	0.2		6.3	26	5:45a	N
18	65.5	80.3	4:00p	49.2	5:30a	4.3	4.9		12.3	35	9:15p	SSW
19	67.3	77.1	4:00p	58.9	5:15a	1.2	3.5		13.8	45	2:45p	W
20	57.6	67.0	2:15p	46.9	8:00a	7.4			5.7	26	2:15a	NNW
21	48.2	59.6	3:15p	38.2	7:00a	16.8			6.6	33	11:45p	SSW
22	56.7	73.2	2:00p	42.9	7:00a	9.8	1.5		11.7	43	1:30a	S
23	64.1	74.2	3:00p	53.3	1:45a	3.7	2.8		5.7	24	2:45p	S
24	60.4	70.2	3:30p	52.7	12:00m	5.2	0.6		6.7	23	11:45p	NE
25	60.9	77.5	3:45p	45.7	5:30a	7.1	3.0		11.3	36	6:30p	SSW
26	65.6	75.6	2:30p	55.3	2:45a	2.7	3.3		6.6	23	11:00p	SSE
27	62.2	70.5	1:00p	55.5	12:00m	3.6	0.8		8.1	33	2:45p	S
28	56.4	66.7	1:30p	49.0	7:30a	8.6			9.7	27	12:15a	S
29	57.5	68.3	12:45p	45.0	10:15p	7.8	0.4	0.14	4.4	28	10:15p	E
30	42.9	48.1	4:00p	38.5	6:30a	22.1		0.15	4.9	34	4:15a	NE
--	63.6 ¹	88.4 ³	10 th	38.2 ³	21 st	146.2 ²	104.0 ²	0.80 ²	8.0 ¹	45 ³	19 th	SSW

Footnotes: 1. Average; 2. Sum (total); 3. Max or Min
 Heat Base: 65.0 Cool Base: 65.0
 Method: (High + Low) / 2 (per ¼ hour)

- 10th: Really hot for this time of year; temp was above anything in July and August!
- September was warmer and drier than normal. The temperature was 1.8° higher due to really warm days in the 1st half of the month. The precipitation was just over half the month's average. Hope it's better next month!

October

Day	Mean Temp.	High Temp.	High Temp. Time	Low Temp.	Low Temp. Time	Heat Degree Days	Cool Degree Days	Precip.	Average Wind Speed	Peak Wind Speed	Peak Wind Time	Wind Dominant Direction
1	42.8	45.0	5:15p	41.8	6:15a	22.2		0.31	1.3	8	12:15p	N
2	49.3	58.0	3:30p	42.3	12:45a	15.7		0.01	3.8	20	12:15p	NE
3	55.3	63.0	11:45a	49.3	6:30a	9.7			5.4	23	1:45p	SSW
4	60.1	69.6	2:15p	52.9	6:00a	5.4	0.6		3.6	15	3:15p	SE
5	59.9	69.4	3:45p	52.5	12:00m	5.8	0.7		7.6	27	11:00p	S
6	57.1	68.5	3:15p	47.3	5:45a	8.1	0.2		11.0	29	1:15a	W
7	59.8	68.8	3:45p	52.1	7:00a	5.6	0.4		7.5	24	5:00p	WSW
8	62.7	72.7	3:00p	56.1	1:15a	3.4	1.1		8.3	35	3:30p	SW
9	60.7	68.3	3:15p	53.5	11:45p	4.6	0.3		14.0	44	8:30a	W
10	43.8	54.0	12:15a	35.3	11:00a	21.2		0.13	4.1	22	7:30a	NNW
11	49.4	59.2	4:15p	40.8	1:15a	15.6			12.1	38	1:45p	SSW
12	43.2	55.3	1:45p	32.9	12:00m	21.8		0.05	17.1	55	1:30	SSW
13	43.9	58.0	1:45p	32.3	5:00a	21.1			8.8	35	1:15a	WNW
14	39.1	51.7	3:15p	28.0	6:45a	25.9			5.5	30	4:00p	ENE
15	37.6	49.2	5:00p	26.0	6:45a	27.4			5.0	28	10:00p	S
16	47.3	60.8	1:15p	36.2	4:00a	17.7			7.6	28	12:15a	SSE
17	53.2	64.9	4:00p	42.7	1:00a	11.8			9.9	31	6:45p	SSW
18	56.7	67.0	2:45p	49.4	5:45a	8.4	0.1		12.7	35	2:30p	SW
19	51.6	58.8	3:00p	38.7	12:00m	13.4			12.8	43	10:00a	W
20	47.9	61.0	3:30p	37.6	12:15a	17.1			7.1	25	7:30p	SSE
21	53.2	66.7	3:00p	44.3	1:15a	11.8			5.0	23	11:00p	S
22	57.0	69.2	2:45p	47.3	2:45a	8.5	0.5		6.1	22	12:15a	SSW
23	56.5	62.4	1:45p	50.1	12:00m	8.5			10.7	34	11:30a	W
24	53.7	65.4	3:45p	45.5	7:45a	11.3			5.3	24	2:15p	WNW
25	61.6	75.9	3:30p	49.2	5:15a	5.7	2.2		11.5	35	1:45p	SW
26	49.1	60.6	12:00p	33.1	12:00m	15.9			16.4	57	11:15a	SSW
27	39.2	51.2	3:45p	28.4	6:45a	25.8			7.9	30	1:30p	N
28	39.9	53.5	3:45p	28.8	7:45a	25.1			4.0	23	5:45a	NE
29	50.8	60.9	4:45p	41.2	12:45a	14.2			7.1	29	7:00p	S
30	55.2	65.3	1:45p	43.3	12:00m	9.8			4.5	23	2:30p	ENE
31	41.5	50.7	2:45p	35.0	12:00m	23.5			7.0	38	12:00m	SSW
--	50.9 ¹	75.9 ³	25 th	26.0 ³	15 th	442.0 ²	6.1 ²	0.50 ²	8.1 ¹	57 ³	26 th	SSW

Footnotes: 1. Average; 2. Sum (total); 3. Max or Min
 Heat Base: 65.0 Cool Base: 65.0
 Method: (High + Low) / 2 (per ¼ hour)

- 1st: A wet, foggy day. The temperature varied by only 3.2° all day!
- 14th: First freeze and first snow (a whopping 1/8") of the season
- 31st: The monthly mean temperature for October has ranged from 44.1 (2009) to 56.6 (2016) with an average of 50.8; this month's mean temperature was 50.9, about as average as you can get.
- 31st: This month's precipitation was only 40% of the average for October – not good!

November

Day	Mean Temp.	High Temp.	High Temp. Time	Low Temp.	Low Temp. Time	Heat Degree Days	Cool Degree Days	Precip.	Average Wind Speed	Peak Wind Speed	Peak Wind Time	Wind Dominant Direction
1	41.4	58.6	1:00p	31.1	10:15p	23.6			7.7	44	1:45a	NNW
2	36.3	49.8	4:00p	29.6	11:30p	28.7			6.8	29	9:00a	SSW
3	40.1	48.4	3:15p	30.1	12:45a	24.9			3.8	22	11:45p	ENE
4	47.4	61.5	2:00p	36.0	2:30a	17.6			7.6	28	1:15a	S
5	57.7	66.3	3:15p	46.1	12:15a	7.4	0.1		4.4	17	12:45p	ENE
6	59.3	72.6	3:00p	50.4	2:45a	7.0	1.2		8.2	26	12:45p	SSW
7	60.4	72.2	1:30p	53.9	11:45p	5.8	1.2		8.9	28	3:45a	W
8	54.3	68.6	1:45p	39.4	11:15p	11.0	0.3		6.6	24	1:45p	WSW
9	53.7	64.6	12:45p	44.7	12:15a	11.3			9.5	31	11:30p	WSW
10	45.0	53.6	12:30p	37.1	10:30p	20.0			5.5	30	12:45p	NW
11	43.7	54.2	3:15p	35.5	7:30a	21.3			4.2	18	5:45p	NW
12	38.7	49.2	2:30p	20.0	5:45a	26.3			6.8	22	12:00p	S
13	53.2	62.9	12:00p	39.5	12:15a	11.8			4.2	23	2:30p	NW
14	52.3	64.1	12:45p	33.8	4:45a	12.7			5.4	24	7:45a	NW
15	59.7	68.3	12:45p	53.8	10:00p	5.6	0.3		4.8	18	10:45p	ENE
16	55.2	60.4	12:30p	48.1	12:00m	9.8			7.5	31	2:45a	W
17	30.4	48.9	1:15a	20.4	8:45p	34.6			5.2	25	5:00a	NNW
18	30.7	43.2	11:45p	18.0	5:45a	34.3			13.5	38	5:30p	S
19	51.3	61.6	1:00p	42.7	12:15a	13.7			7.5	34	12:15a	WSW
20	44.8	56.1	11:00a	31.5	12:00m	20.2			3.6	16	10:45p	NNW
21	35.5	46.4	3:30p	28.5	6:45a	29.5			6.4	29	8:15p	N
22	49.6	61.6	12:45p	36.4	12:15a	15.4			7.3	33	8:45p	S
23	51.6	59.6	11:30a	41.9	12:15a	13.4			12.8	41	5:45p	W
24	36.7	46.0	12:15a	23.3	12:00m	28.3			6.7	28	7:45a	NE
25	33.0	45.2	1:45p	20.3	6:15a	32.0		.02	5.7	23	7:00p	SSW
26	50.6	61.2	1:45p	42.7	12:15a	14.4			4.6	19	4:15p	SSW
27	42.4	49.4	12:15a	33.9	12:00m	22.6			5.8	26	10:30a	NE
28	48.4	62.8	2:45p	33.3	3:30a	16.6			6.6	35	3:00a	SSW
29	57.9	67.1	12:45p	51.7	12:12a	7.2	0.1		3.0	16	1:15p	SW
30	48.4	54.9	12:00m	43.0	9:15a	16.6			6.0	36	8:15a	NE
--	47.0 ¹	72.6 ³	6 th	18.0 ³	18 th	543.6 ²	3.2 ²	.02 ²	6.6 ¹	44 ³	1 st	SSW

Footnotes: 1. Average; 2. Sum (total); 3. Max or Min
 Heat Base: 65.0 Cool Base: 65.0
 Method: (High + Low) / 2 (per ¼ hour)

- 25th: Got ¼" of snow overnight; won't help the vegetation at all.
- Finished the month with just .02" of precipitation. Things are very dry around here.

December

Day	Mean Temp.	High Temp.	High Temp. Time	Low Temp.	Low Temp. Time	Heat Degree Days	Cool Degree Days	Precip.	Average Wind Speed	Peak Wind Speed	Peak Wind Time	Wind Dominant Direction
1	53.3	63.5	11:00a	45.8	4:00a	11.7			5.6	22	3:00a	S
2	57.5	67.3	1:30p	51.3	7:45a	7.6	0.1		4.2	20	1:45p	SSE
3	48.4	54.4	2:00a	40.7	8:45p	16.6			4.8	23	9:30a	NE
4	46.4	59.4	1:00p	38.4	7:30a	18.6			7.0	30	4:15p	S
5	46.5	62.9	11:45a	16.0	12:00m	18.5			6.2	41	7:15p	NNW
6	21.8	35.3	12:00m	11.7	3:45a	43.2			13.4	48	5:15p	S
7	42.3	50.3	12:30p	32.4	12:30a	22.7			5.1	20	11:30a	SW
8	43.2	53.7	1:30p	35.1	7:30a	21.8			12.6	54	3:30p	WNW
9	42.7	51.2	12:00p	36.1	7:15a	22.3			11.5	43	11:00p	WSW
10	32.2	43.0	1:15a	15.4	11:30p	32.8			15.5	55	10:15a	WNW
11	30.2	43.5	1:00p	14.0	1:15a	34.8			9.2	29	7:15a	SSE
12	49.7	59.5	2:45p	36.9	12:45a	15.3			9.6	32	2:45p	WSW
13	52.1	64.0	12:30p	45.7	7:15a	12.9			5.0	24	12:00p	SSW
14	48.3	54.1	3:00p	41.9	10:15p	16.7			12.6	44	1:45p	WSW
15	36.0	43.4	12:15a	26.3	8:15a	29.0		0.01	20.8	76	12:45p	WNW
16	33.4	41.8	3:00p	26.4	9:15a	31.6			14.3	37	9:15a	S
17	33.2	38.9	6:15a	22.5	11:45p	31.8			5.1	22	12:15a	NW
18	25.3	34.8	2:15p	17.0	5:30a	39.7			6.6	26	7:15p	S
19	40.1	53.4	2:30p	28.0	4:15a	24.9			4.4	16	4:15a	S
20	43.5	49.9	2:45p	35.7	12:00m	21.5			5.8	31	11:15p	ENE
21	44.6	56.4	1:30p	35.4	12:30a	20.4			7.0	27	1:00a	SSW
22	46.4	54.9	12:45p	38.8	12:15a	18.6			5.1	19	11:45p	SSW
23	50.4	59.9	3:00p	44.1	1:00a	14.6			13.6	48	11:00p	WSW
24	44.1	50.4	12:15a	36.6	10:00p	20.9			17.8	52	2:30a	WNW
25	41.4	49.8	2:45p	35.5	12:00m	23.6			13.5	46	2:15a	WNW
26	39.1	44.6	12:30p	31.9	12:00m	25.9			20.6	63	9:45a	W
27	35.4	46.0	12:45p	30.2	5:30a	29.6			15.6	49	7:30p	WSW
28	30.4	36.8	2:15p	26.7	2:00a	34.6			15.3	50	9:45a	WNW
29	29.1	35.7	1:00p	23.6	7:15a	35.9			14.5	44	1:30p	WNW
30	32.2	41.1	2:15p	25.9	3:30a	32.8			12.5	35	11:00p	W
31	32.2	42.3	2:15p	10.9	12:00m	32.8			13.7	42	2:00p	WSW
--	40.4 ¹	67.3 ³	2 nd	10.9 ³	31 st	763.7 ²	0.1 ²	0.01 ²	10.6 ¹	76 ³	15 th	W

Footnotes: 1. Average; 2. Sum (total); 3. Max or Min
 Heat Base: 65.0 Cool Base: 65.0
 Method: (High + Low) / 2 (per ¼ hour)

- 6th: It got down to 11.7°, the coldest since February 15th when it got down to -9.7° (the coldest all year!)
- 15th: Hurricane force winds; the highest recorded in 21 years of data. We're halfway through the month and the mean temperature is still 9° above normal.
- 29th: About ¼" of snow; gone by noon
- 31st: Coldest day of the month: 10.9°.
- 31st: The month ended on a very cold note, but the mean temperature for the month was actually 7° above normal! It also was the driest December since we started keeping records on the Ranch. However, we finished the year almost 6 ½" above average, thanks to all the rain we got in the spring. Surely could have used some of it in the fall.